

IMPORTANT NOTICE

The following document is NOT comprehensive for design, bidding, or installation when used in isolation. Please refer to all related documents in their entirety for complete information regarding this ACM panel system. Such documents include, but may not be limited to, Technical Guides, Architectural Color Chart, Approved Materials List, Systems Guides, Technical Bulletins, Technical Data Sheets, CAD Drawings, Specifications, and Submittals. Visit LaminatorsInc.com for information on the latest documents regarding this panel system.

INSTALLATION GUIDE ERRATA – ROUT & RETURN

1. [Effective 2/7/2020] Modify Page 6, Step 7 as follows:
 - This step is to be omitted. No fasteners are to be installed in reinforcing angles (Part No. 44DS-ANGLE)

CONTACT US

To consult directly with one of our Professional Engineers regarding our ACM panel systems, contact Laminators Technical Support between the hours of 8:00am – 5:00pm EST:

800.523.2347
LaminatorsInc.com
engineering@laminatorsinc.com

The following document contains a detail set for the application of the Rout & Return Installation System over a basic form of Continuous Insulation (CI) that consists of discrete structural rails or Z-girts combined with uncompressed insulation. Such “Alternate” CI (ALT CI or ACI) may be preferred to Laminators Omega CI (OCI) rigid insulation panels. Although many forms of proprietary CI are available, the detail set is intended to represent the relationship of a Rout & Return installation over basic ALT CI.

Laminators has not performed fire testing of the Rout & Return Installation System over any ALT CI, nor has any application of an engineering extension been made with respect to NFPA 285 compliance. Therefore, no claims can be made by Laminators regarding potential impact of ALT CI on the fire performance of the project-specific exterior wall assembly. As such, all specialized detailing requirements for NFPA 285 compliance represented in the detail set are specific to the installation system “layer” of the exterior wall assembly based on historical fire testing without ALT CI.

INSTRUCTIONS FOR NFPA 285 COMPLIANCE

With respect to fire performance, note the following when detailing the Rout & Return Installation System over basic ALT CI comprised of horizontal structural rails or Z-girts combined with uncompressed insulation (ACI-H):

1. The following document represents the referenced system as it has been designed, detailed, and tested and its relationship with a typical exterior wall assembly. As such, the document may be considered a baseline for the system and appropriately applied to project-specific conditions.
 - a. Laminators defines the NFPA 285 Zone as the area contained within a 10'-0" height above any window by the width of the window opening. The following document does not include a partial elevation that outlines the NFPA 285 Zone and related dimensions, notes, and sections. However, in order to maintain NFPA 285 compliance, specialized detailing is still required in the NFPA 285 Zone and at window heads as follows:
 - i. All horizontal panel joints within the NFPA 285 Zone require additional fasteners per detail RR-ACI-V-01HA or must have rivets installed (contact Laminators Technical Support for information regarding rivet installation).
 - ii. Additional layers of steel flashing are required at window heads per detail RR-ACI-V-02A.
 - iii. Vertical panel joints are not permitted above window openings within the NFPA 285 Zone. All vertical joints must align with vertical window jambs or mullions.
2. Through the use of a specific Engineering Evaluation (EEV) available from Laminators, engineering extensions may be made (in lieu of what has been tested) with respect to base wall framing, fire-stopping at floor lines, cavity insulation, and water-resistive barrier (WRB) components while maintaining NFPA 285 compliance. Note that with respect to CI, the engineering extensions provided in the EEV are only applicable to Laminators OCI rigid insulation panels and do not address basic ALT CI or any other form of proprietary CI. The EEV may be required for submission to the Authority Having Jurisdiction (AHJ) to support the extensions.
3. If one or more engineering extensions are required beyond what is provided in the EEV available from Laminators, it is the responsibility of a third-party to pursue obtaining a separate

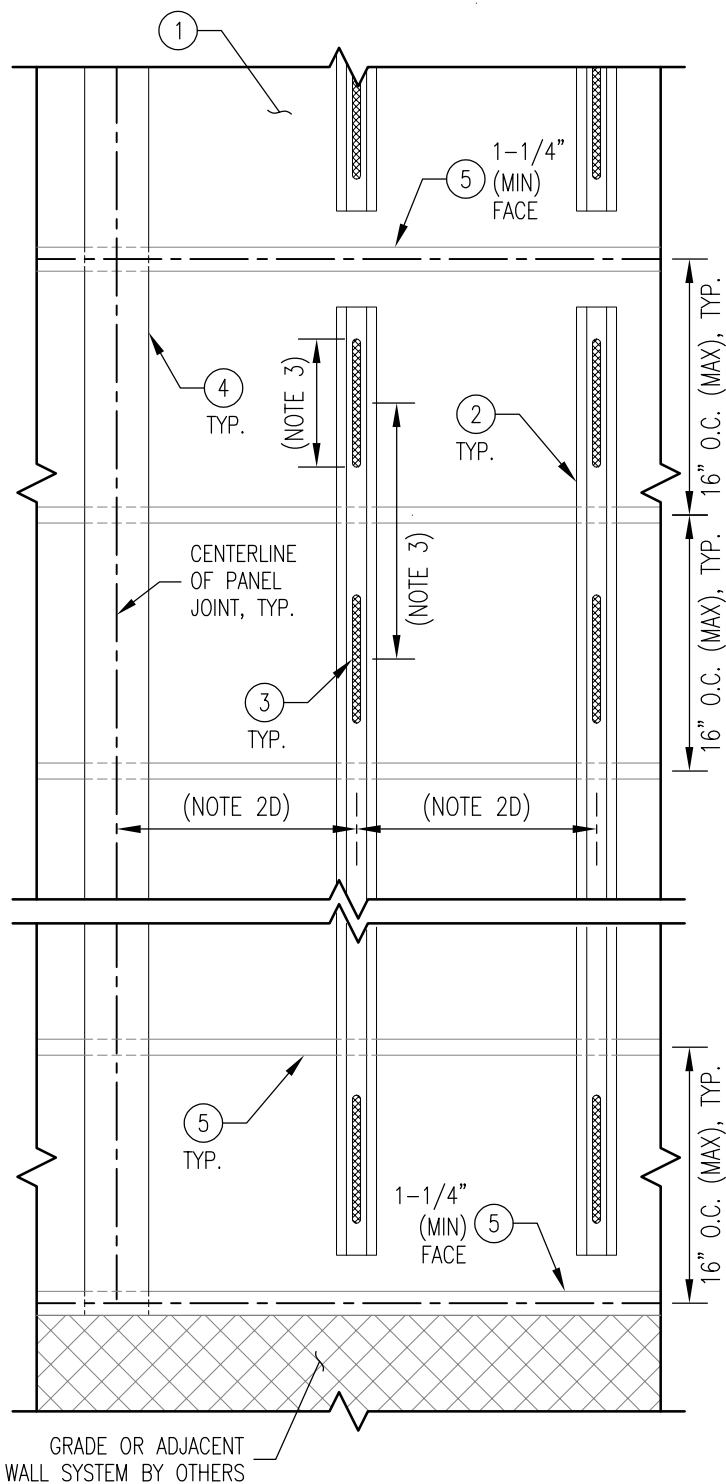
EEV that adequately addresses each intended substitution. Note that Laminators cannot serve as the third-party in efforts to obtain such an EEV.

Note that the application of any engineering extension for NFPA 285 compliance will need to be evaluated by the Design Professional of Record (DPR) with respect to potential impact on any air, structural, and water performance of the project-specific exterior wall assembly. It is possible that components substituted to achieve fire testing compliance will affect the assembly differently with respect to air, structural, and water performance and need to be coordinated.

If the Rout & Return Installation System is intended to be installed over a different substrate (e.g. fire-retardant-treated wood (FRTW) structural sheathing (panels), gypsum (non-structural) sheathing, CMU, concrete, or Omega CI rigid insulation panels), please defer to the appropriate detail set.

DRAWING INDEX – RR-ACI-H DETAIL SET (Rev 00, 01/19/2021)

DWG NO.	TITLE	REV DATE	REV	CHANGE FROM PREVIOUS REV
RR-ACI-H-EL	Partial System Elevation	1/19/2021	00	
RR-ACI-H-ST	Panel Stiffener Detail	1/19/2021	00	
RR-ACI-H-01H	Horizontal Joint Detail	1/19/2021	00	
RR-ACI-H-01HA	Horizontal Joint Detail (NFPA 285 Zone)	1/19/2021	00	
RR-ACI-H-01V	Vertical Joint Detail	1/19/2021	00	
RR-ACI-H-02	Window Head Detail	1/19/2021	00	
RR-ACI-H-02A	Window Head Detail (NFPA 285 Zone)	1/19/2021	00	
RR-ACI-H-03	Window Sill Detail	1/19/2021	00	
RR-ACI-H-04	Window Jamb / Vertical Edge Detail	1/19/2021	00	
RR-ACI-H-05	Top of Wall Detail	1/19/2021	00	
RR-ACI-H-06	Base of Wall (Grade) Detail	1/19/2021	00	
RR-ACI-H-07	Inside Corner Detail	1/19/2021	00	
RR-ACI-H-08	Outside Corner Detail	1/19/2021	00	
RR-ACI-H-09	Fascia-to-Soffit Transition Detail	1/19/2021	00	
RR-ACI-H-10	Soffit Vent Requirements	1/19/2021	00	



PARTIAL SYSTEM ELEVATION
(PANELS AND EXTRUSIONS NOT SHOWN)

- ① CONTINUOUS INSULATION (CI) SYSTEM OVER EXTERIOR WALL ASSEMBLY; LOCATION OF AIR AND WATER BARRIER AND DRAINAGE PLANE TO BE DETERMINED BY DESIGN PROFESSIONAL OF RECORD
- ② PANEL STIFFENERS (7/8" HAT CHANNELS, 18 GA. MIN)
 - A. MAINTAIN 3" GAPS BETWEEN ENDS OF PANEL STIFFENERS AND PANEL EDGES
 - B. PANEL STIFFENERS MUST BE ORIENTED VERTICALLY AND SUPPORTED BY A MINIMUM OF (2) HORIZONTAL CI RAILS
 - C. FASTEN STIFFENERS TO HORIZONTAL CI RAILS USING (2) #10 X 1/2" (MIN) SELF-DRILLING SCREWS PER RAIL LOCATION ALONG HAT CHANNEL FLANGES (REFER TO DETAIL RR-ACI-H-ST)
 - D. REQUIRED PANEL STIFFENER SPACING TO BE BASED ON PROJECT SPECIFIC WIND LOADS:
 - UP TO 40 PSF (ASD): STIFFENERS REQUIRED AT 16" O.C.
- ③ 1/4" (MIN) TO 3/8" (MAX) BEAD OF LAMINATORS APPROVED PANEL ADHESIVE APPLIED TO PANEL STIFFENERS (REFER TO DETAIL RR-ACI-H-ST); LENGTH AND SPACING OF ADHESIVE BEADS TO BE BASED ON PROJECT SPECIFIC WIND LOADS:
 - UP TO 40 PSF (ASD): 8" ADHESIVE LENGTHS AT 16" O.C.
- ④ CONTINUOUS 4" COLD-FORMED STRAPPING (18 GA. MIN) FASTENED TO HORIZONTAL CI RAILS USING (3) #8 X 1/2" PPH SELF-DRILLING SCREWS PER RAIL LOCATION
 - VERTICAL STRAPPING INSTALLED AT ALL VERTICAL PANEL JOINTS/EDGES
- ⑤ HORIZONTAL CI RAILS INSTALLED AT 16" O.C. (MAX)
 - A. RAIL DESIGN AND ATTACHMENT TO STRUCTURE TO BE DETERMINED BY DESIGN PROFESSIONAL OF RECORD
 - B. RAILS TO BE 18 GA. (MIN) COLD-FORMED STEEL
 - C. RAILS TO BE LOCATED AT ALL HORIZONTAL PANEL JOINTS AND HORIZONTAL EDGES AND COORDINATED WITH WALL FRAMING
 - D. FACE OF RAILS MUST MEET THE FOLLOWING GEOMETRIC REQUIREMENTS FOR PANEL SYSTEM INSTALLATION:
 - HORIZONTAL JOINT SUPPORTS: 1-1/4" (MIN) FACE WIDTH
 - HORIZONTAL EDGE SUPPORTS: 1-1/4" (MIN) FACE WIDTH

IMPORTANT NOTICE

PROJECT-SPECIFIC COMPONENTS AND CLADDING WIND LOADS (REQUIRED STRENGTH, R_q) SHALL NOT EXCEED AVAILABLE LOAD-CARRYING CAPACITY OF SYSTEM (ALLOWABLE STRENGTH, R_n/Ω)

- A. PROJECT-SPECIFIC COMPONENTS AND CLADDING WIND LOADS ARE TO BE DETERMINED BY THE DESIGN PROFESSIONAL OF RECORD
- B. AVAILABLE LOAD-CARRYING CAPACITY OF SYSTEM (UP TO 40 PSF) IS BASED ON ALLOWABLE STRENGTH DESIGN (ASD) METHOD
- C. FOR PROJECT-SPECIFIC COMPONENTS AND CLADDING WIND LOADS GREATER THAN 40 PSF, CONTACT LAMINATORS TECHNICAL SUPPORT FOR PROJECT-SPECIFIC DETAILING REQUIREMENTS



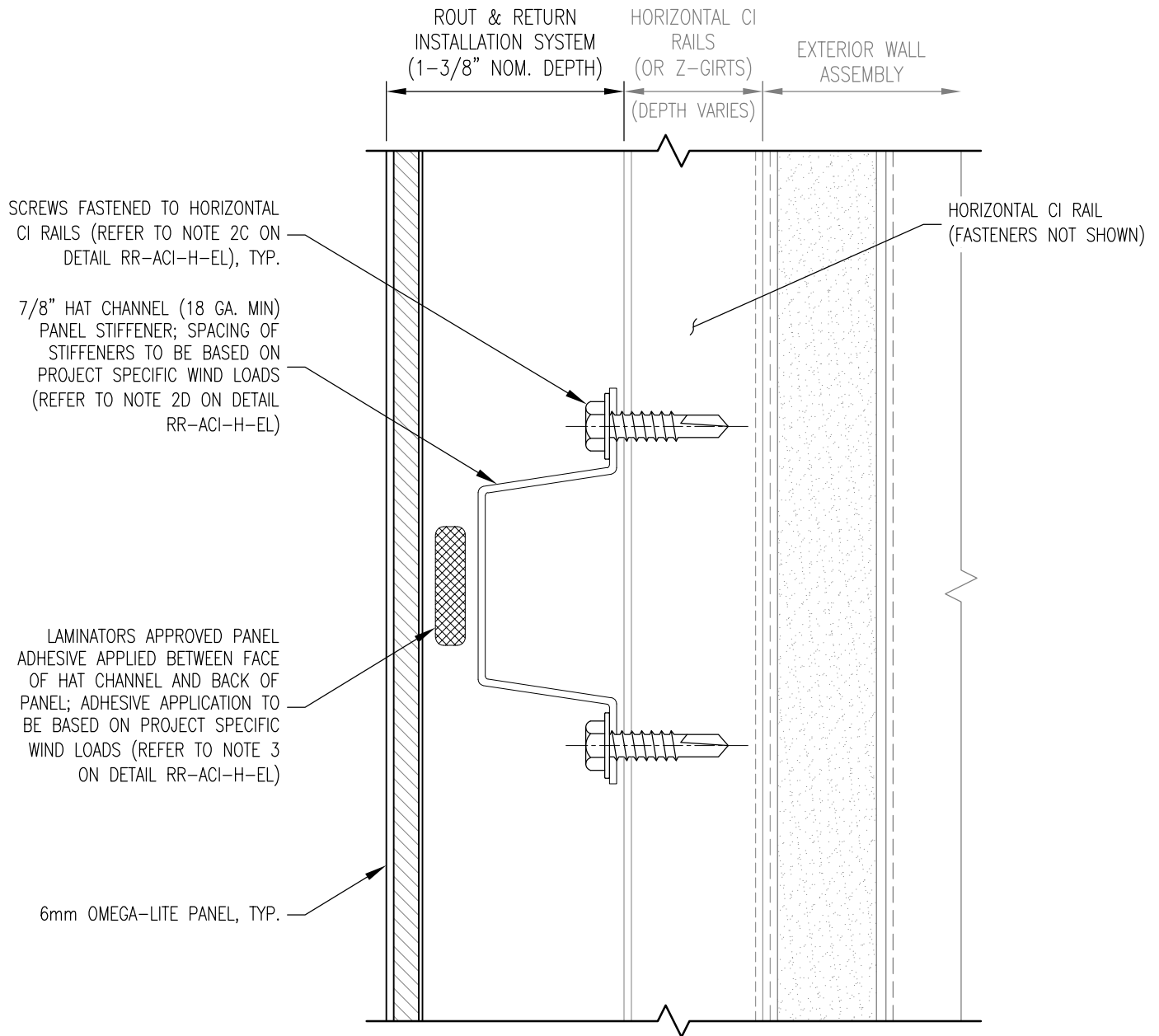
www.LaminatorsInc.com

877.OMEGA.77

PARTIAL SYSTEM ELEVATION

**ROUT & RETURN INSTALLATION SYSTEM
OVER ALT CI SYSTEM (WITH HORIZONTAL RAILS)**

Date: 1/19/2021	Drawn By: JJM	Dwg. No.: RR-ACI-H-EL	Rev: 00
--------------------	------------------	--------------------------	------------



PLAN SECTION

DETAIL NOTES:

1. SPACING SHOWN BETWEEN SOME INSTALLATION SYSTEM COMPONENTS EXAGGERATED FOR CLARITY
2. PANEL STIFFENERS TO BE FASTENED TO SUBSTRATE PRIOR TO PANEL INSTALLATION; REFER TO DETAIL RR-ACI-H-EL FOR ADDITIONAL INFORMATION
3. FULL CONTACT OF PANEL ADHESIVE WITH BACK OF PANEL REQUIRED AT ALL APPLICATION LOCATIONS



www.LaminatorsInc.com

877.OMEGA.77

PANEL STIFFENER DETAIL

ROUT & RETURN INSTALLATION SYSTEM OVER ALT CI SYSTEM (WITH HORIZONTAL RAILS)

Date:
1/19/2021

Drawn By:
JJM

Dwg. No.:
RR-ACI-H-ST

Rev:
00

NOTE: THIS DETAIL IS NOT APPLICABLE TO HORIZONTAL JOINTS WITHIN THE NFPA 285 ZONE

ROUT & RETURN INSTALLATION SYSTEM (1-3/8" NOM. DEPTH) HORIZONTAL CI RAILS (OR Z-GIRTS) (DEPTH VARIES) EXTERIOR WALL ASSEMBLY

PANEL STIFFENERS NOT SHOWN FOR CLARITY; REQUIRED PANEL STIFFENING TO BE BASED ON PROJECT SPECIFIC WIND LOADS (REFER TO DETAIL RR-ACI-H-EL)

LOCATION OF AIR AND WATER BARRIER AND DRAINAGE PLANE TO BE DETERMINED BY DESIGN PROFESSIONAL OF RECORD

ANGLE CLIP BEYOND (FASTENING TO HORIZONTAL CI RAIL NOT SHOWN FOR CLARITY)

LAMINATORS APPROVED FABRICATION SEALANT APPLIED TO PANEL ROUT PRIOR TO BENDING TO FORM PANEL RETURN LEG, TYP. (REFER TO LAMINATORS ROUT & RETURN INSTALLATION MANUAL)

1/2" SEALANT JOINT W/ CLOSED-CELL BACKER ROD AND LAMINATORS APPROVED SILICONE CAULK

HORIZONTAL CI RAIL W/ 1-1/4" (MIN) FACE WIDTH

LOW-PROFILE HEAD SCREW FOR FASTENING ANGLE CLIP TO HORIZONTAL CI RAIL

6mm OMEGA-LITE PANEL, TYP.

(2) #6 X 1/4" PPH SCREWS (PART NO. 13000) INSTALLED INTO PANEL AT EACH ANGLE CLIP, TYP.

ANGLE CLIPS (PART NO. 50295) INSTALLED ALONG PERIMETER, TYP.; REFER TO ANGLE CLIP INSTALLATION NOTE BELOW

FACE OF CONTINUOUS INSULATION (CI)

- DETAIL NOTES:**
1. SPACING SHOWN BETWEEN SOME INSTALLATION SYSTEM COMPONENTS EXAGGERATED FOR CLARITY
 2. REFER TO DETAILS RR-ACI-H-EL AND RR-ACI-H-ST FOR REQUIRED PANEL STIFFENER LAYOUT

- ANGLE CLIP INSTALLATION:**
- UP TO 40 PSF (ASD):
INSTALL CLIPS AT 12" O.C. WITH (2) #8 X 1/2" (MIN) PPH SELF-DRILLING SCREWS PER CLIP FASTENED INTO HORIZONTAL CI RAIL

SECTION



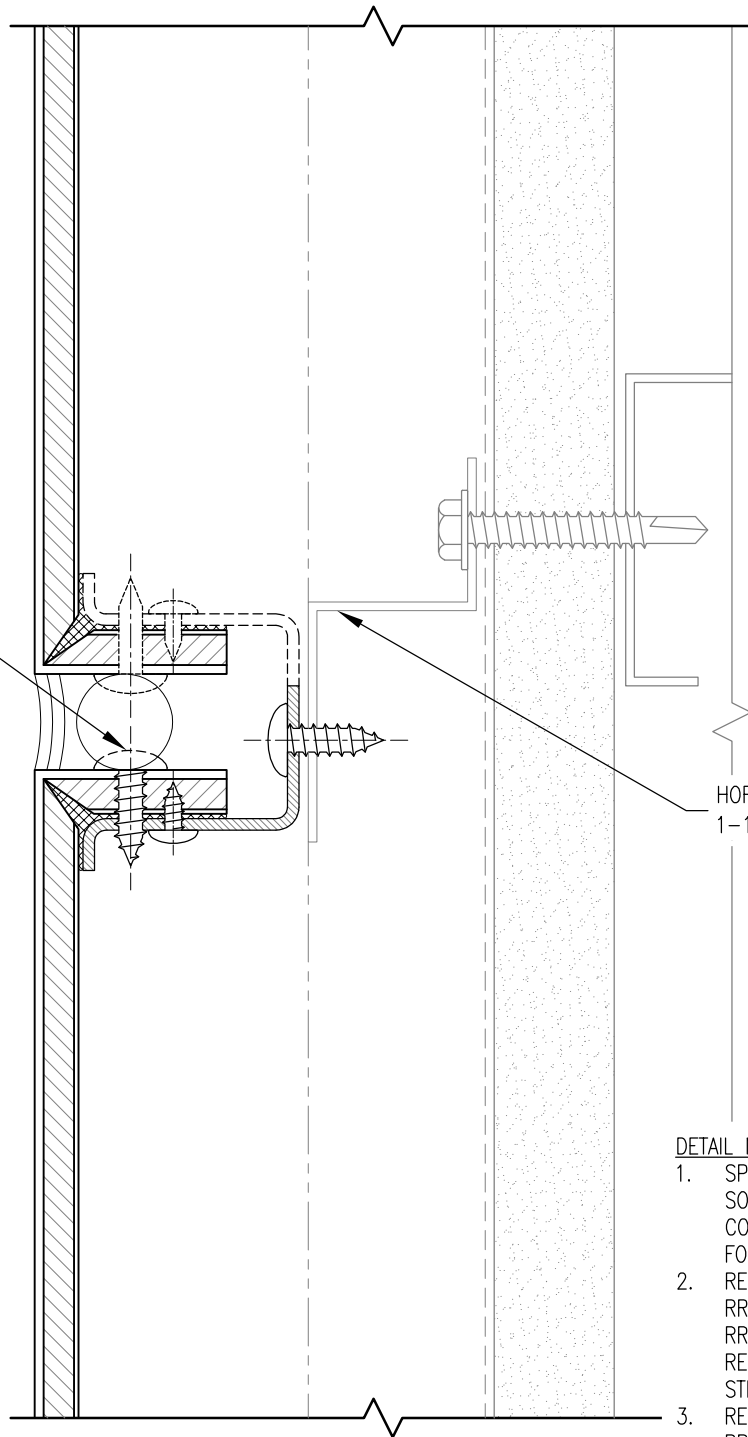
www.LaminatorsInc.com

877.OMEGA.77

HORIZONTAL JOINT DETAIL
ROUT & RETURN INSTALLATION SYSTEM
OVER ALT CI SYSTEM (WITH HORIZONTAL RAILS)

Date: 1/19/2021	Drawn By: JJM	Dwg. No.: RR-ACI-H-01H	Rev: 00
--------------------	------------------	---------------------------	------------

(1) #8 X 3/4" (MIN) PPH
 SELF-DRILLING SCREW INSTALLED
 THROUGH PANEL FACE INTO ANGLE
 CLIP, TYP; LOCATE SCREW AT
 CENTERLINE OF PANEL RETURN LEG
 AND ANGLE CLIP LENGTH



HORIZONTAL CI RAIL W/
 1-1/4" (MIN) FACE WIDTH

DETAIL NOTES:

1. SPACING SHOWN BETWEEN SOME INSTALLATION SYSTEM COMPONENTS EXAGGERATED FOR CLARITY
2. REFER TO DETAILS RR-ACI-H-EL AND RR-ACI-H-ST FOR REQUIRED PANEL STIFFENER LAYOUT
3. REFER TO JOINT DETAILS RR-ACI-H-01H FOR CLIP SPACING AND TYPICAL COMPONENTS NOT ANNOTATED

SECTION



www.LaminatorsInc.com

877.OMEGA.77

HORIZONTAL JOINT DETAIL (NFPA 285 ZONE)

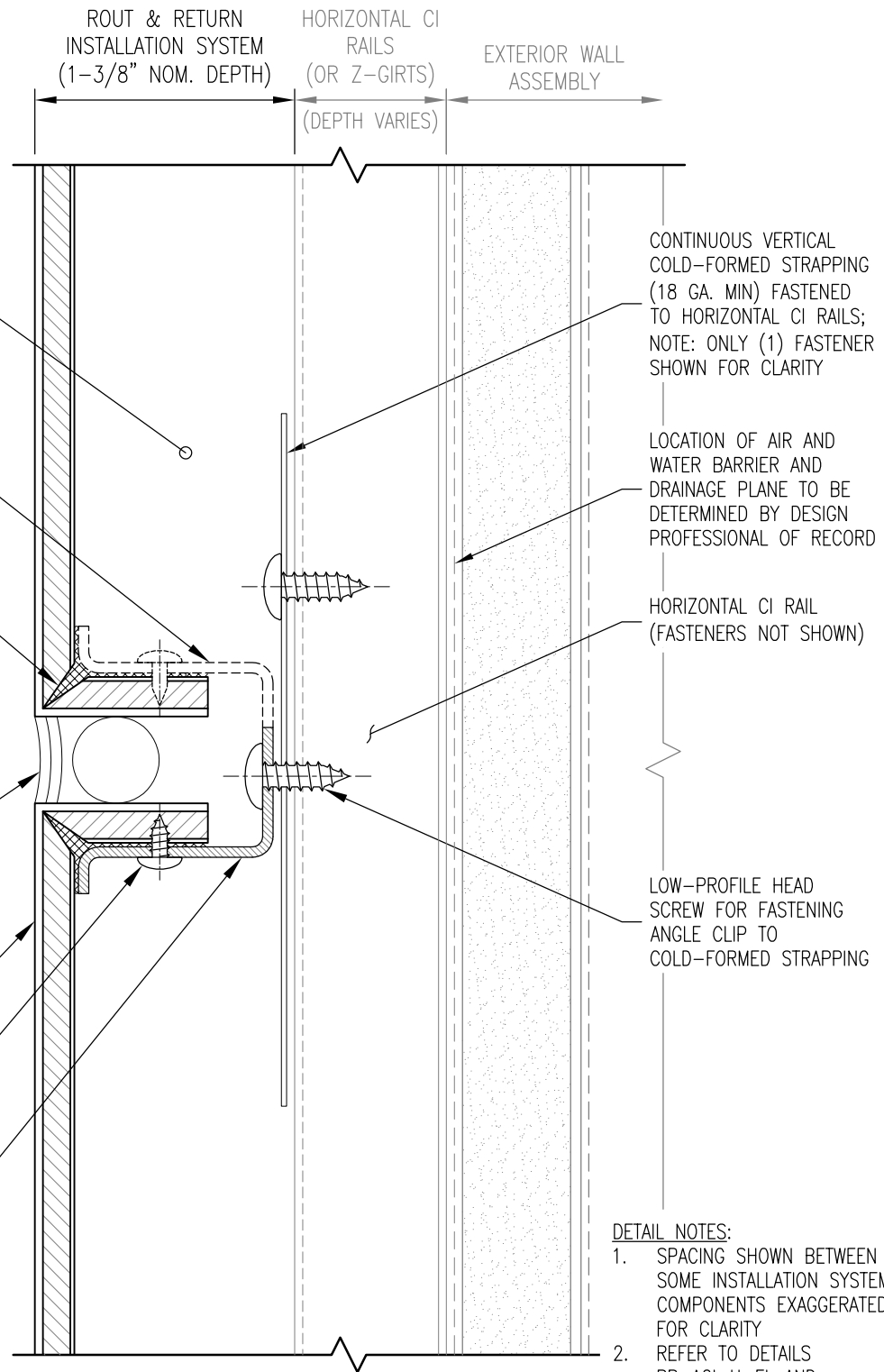
ROUT & RETURN INSTALLATION SYSTEM
 OVER ALT CI SYSTEM (WITH HORIZONTAL RAILS)

Date:
 1/19/2021

Drawn By:
 JJM

Dwg. No.:
 RR-ACI-H-01HA

Rev:
 00



PANEL STIFFENERS NOT SHOWN FOR CLARITY; REQUIRED PANEL STIFFENING TO BE BASED ON PROJECT SPECIFIC WIND LOADS (REFER TO DETAIL RR-ACI-H-EL)

ANGLE CLIP BEYOND (FASTENING TO COLD-FORMED STRAPPING NOT SHOWN FOR CLARITY)

LAMINATORS APPROVED FABRICATION SEALANT APPLIED TO PANEL ROUT PRIOR TO BENDING TO FORM PANEL RETURN LEG, TYP. (REFER TO LAMINATORS ROUT & RETURN INSTALLATION MANUAL)

1/2" SEALANT JOINT W/ CLOSED-CELL BACKER ROD AND LAMINATORS APPROVED SILICONE CAULK

6mm OMEGA-LITE PANEL, TYP.

(2) #6 X 1/4" PPH SCREWS (PART NO. 13000) INSTALLED INTO PANEL AT EACH ANGLE CLIP, TYP.

ANGLE CLIPS (PART NO. 50295) INSTALLED ALONG PERIMETER, TYP.; REFER TO ANGLE CLIP INSTALLATION NOTE BELOW

ANGLE CLIP INSTALLATION:

- UP TO 40 PSF (ASD):
INSTALL CLIPS AT 12" O.C. WITH (2) #8 X 1/2" (MIN) PPH SELF-DRILLING SCREWS PER CLIP FASTENED INTO COLD-FORMED STRAPPING

CONTINUOUS VERTICAL COLD-FORMED STRAPPING (18 GA. MIN) FASTENED TO HORIZONTAL CI RAILS; NOTE: ONLY (1) FASTENER SHOWN FOR CLARITY

LOCATION OF AIR AND WATER BARRIER AND DRAINAGE PLANE TO BE DETERMINED BY DESIGN PROFESSIONAL OF RECORD

HORIZONTAL CI RAIL (FASTENERS NOT SHOWN)

LOW-PROFILE HEAD SCREW FOR FASTENING ANGLE CLIP TO COLD-FORMED STRAPPING

DETAIL NOTES:

- SPACING SHOWN BETWEEN SOME INSTALLATION SYSTEM COMPONENTS EXAGGERATED FOR CLARITY
- REFER TO DETAILS RR-ACI-H-EL AND RR-ACI-H-ST FOR REQUIRED PANEL STIFFENER LAYOUT

SECTION



www.LaminatorsInc.com

877.OMEGA.77

VERTICAL JOINT DETAIL
ROUT & RETURN INSTALLATION SYSTEM
OVER ALT CI SYSTEM (WITH HORIZONTAL RAILS)

Date: 1/19/2021	Drawn By: JJM	Dwg. No.: RR-ACI-H-01V	Rev: 00
--------------------	------------------	---------------------------	------------

ALUMINUM FLASHING
BY OTHERS; COORDINATE WITH
LOCATION OF AIR AND WATER
BARRIER AND DRAINAGE PLANE

FACE OF
CONTINUOUS
INSULATION
(CI)

AIR AND WATER BARRIER
TO LAP OVER FLASHING
IN SHINGLE FASHION

1/2" SEALANT JOINT W/
CLOSED-CELL BACKER ROD AND
LAMINATORS APPROVED SILICONE
CAULK; PROVIDE 3/8" (MIN)
GAPS AT 24" O.C. FOR VENTING
AND DRAINAGE

HORIZONTAL CI RAIL W/
1-1/4" (MIN) FACE WIDTH

HORIZONTAL LEG OF
FLASHING TO EXTEND
TO FACE OF PANEL;
DRIP EDGE (OPTIONAL)

COORDINATE TERMINATION OF
FLASHING WITH WINDOW
SYSTEM; WATER CONTROLS AT
INTERFACE BY OTHERS

WINDOW SYSTEM BY OTHERS

DETAIL NOTES:

1. SPACING SHOWN BETWEEN SOME INSTALLATION SYSTEM COMPONENTS EXAGGERATED FOR CLARITY
2. REFER TO DETAILS RR-ACI-H-EL AND RR-ACI-H-ST FOR REQUIRED PANEL STIFFENER LAYOUT
3. REFER TO JOINT DETAILS RR-ACI-H-01H AND RR-ACI-H-01V FOR CLIP SPACING AND TYPICAL COMPONENTS NOT ANNOTATED

SECTION

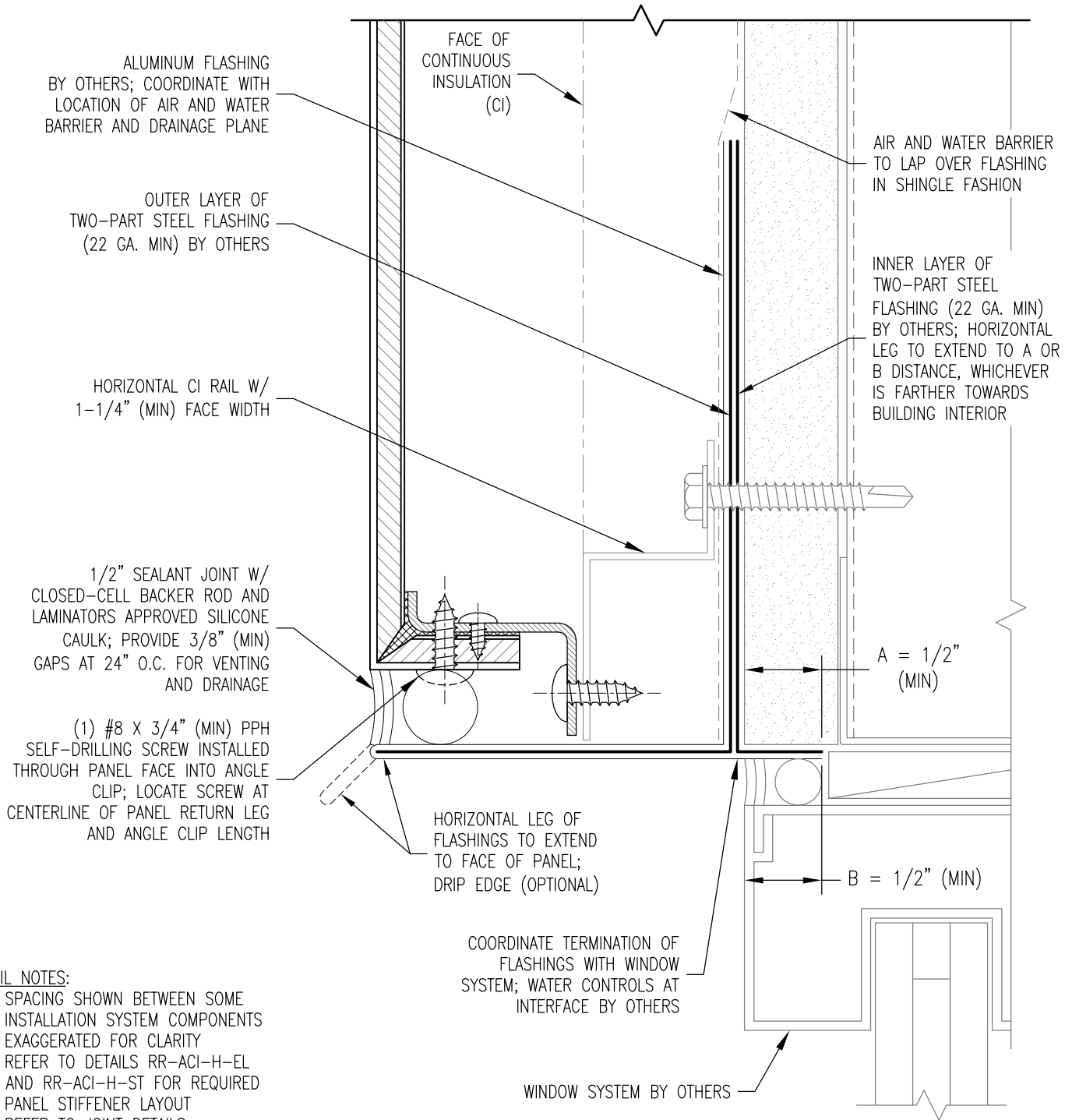


OMEGA PANEL PRODUCTS Ω
LAMINATORS INC.
www.LaminatorsInc.com 877.OMEGA.77

WINDOW HEAD DETAIL

ROUT & RETURN INSTALLATION SYSTEM
OVER ALT CI SYSTEM (WITH HORIZONTAL RAILS)

Date: 1/19/2021	Drawn By: JJM	Dwg. No.: RR-ACI-H-02	Rev: 00
--------------------	------------------	--------------------------	------------



DETAIL NOTES:

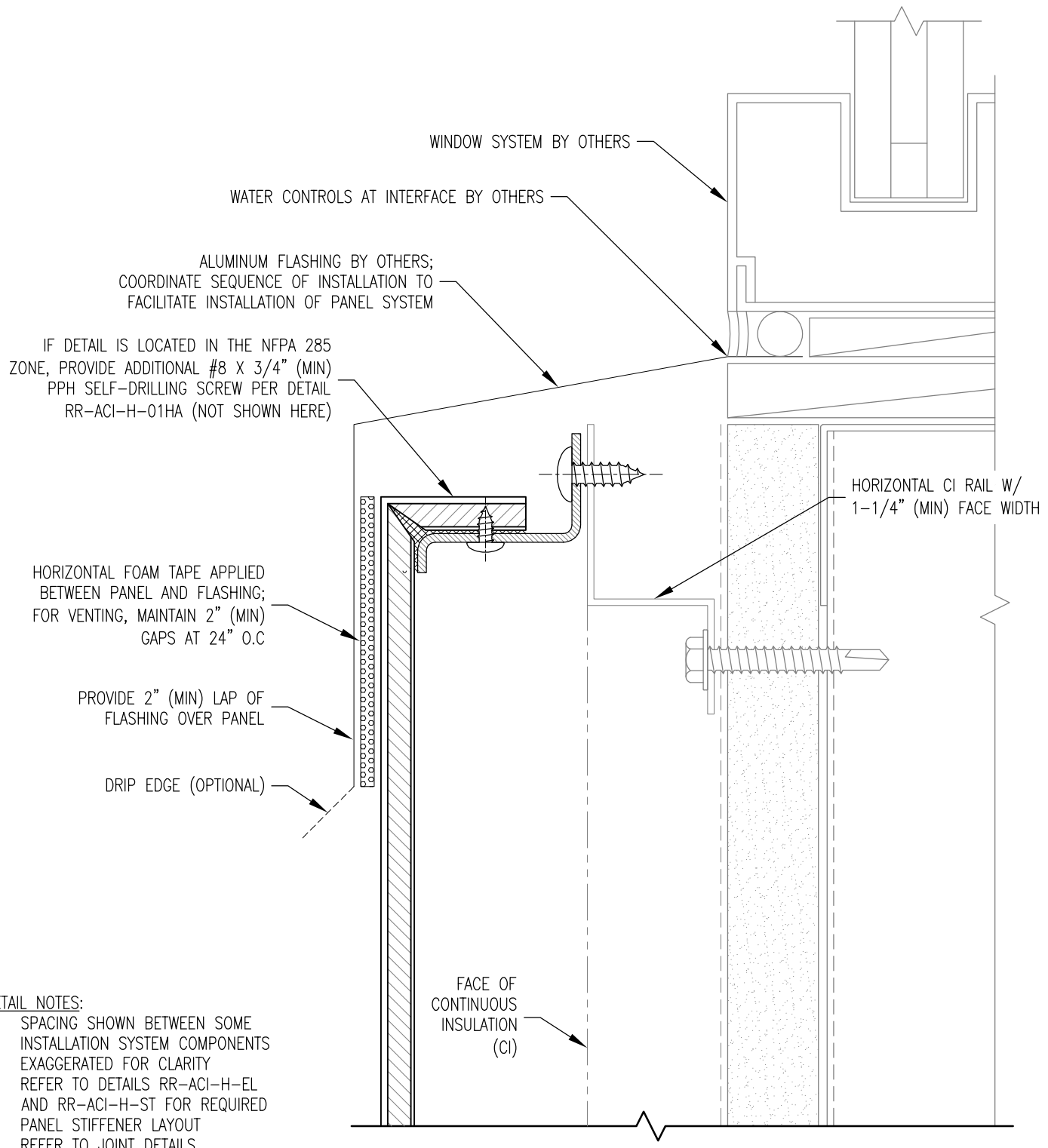
1. SPACING SHOWN BETWEEN SOME INSTALLATION SYSTEM COMPONENTS EXAGGERATED FOR CLARITY
2. REFER TO DETAILS RR-ACI-H-EL AND RR-ACI-H-ST FOR REQUIRED PANEL STIFFENER LAYOUT
3. REFER TO JOINT DETAILS RR-ACI-H-01H AND RR-ACI-H-01V FOR CLIP SPACING AND TYPICAL COMPONENTS NOT ANNOTATED

SECTION

OMEGA PANEL PRODUCTS Ω
LAMINATORS INC.
 www.LaminatorsInc.com 877.OMEGA.77

WINDOW HEAD DETAIL (NFPA 285 ZONE)
ROUT & RETURN INSTALLATION SYSTEM OVER ALT CI SYSTEM (WITH HORIZONTAL RAILS)

Date: 1/19/2021	Drawn By: JJM	Dwg. No.: RR-ACI-H-02A	Rev: 00
--------------------	------------------	---------------------------	------------



DETAIL NOTES:

1. SPACING SHOWN BETWEEN SOME INSTALLATION SYSTEM COMPONENTS EXAGGERATED FOR CLARITY
2. REFER TO DETAILS RR-ACI-H-EL AND RR-ACI-H-ST FOR REQUIRED PANEL STIFFENER LAYOUT
3. REFER TO JOINT DETAILS RR-ACI-H-01H AND RR-ACI-H-01V FOR CLIP SPACING AND TYPICAL COMPONENTS NOT ANNOTATED

SECTION



www.LaminatorsInc.com

877.OMEGA.77

WINDOW SILL DETAIL

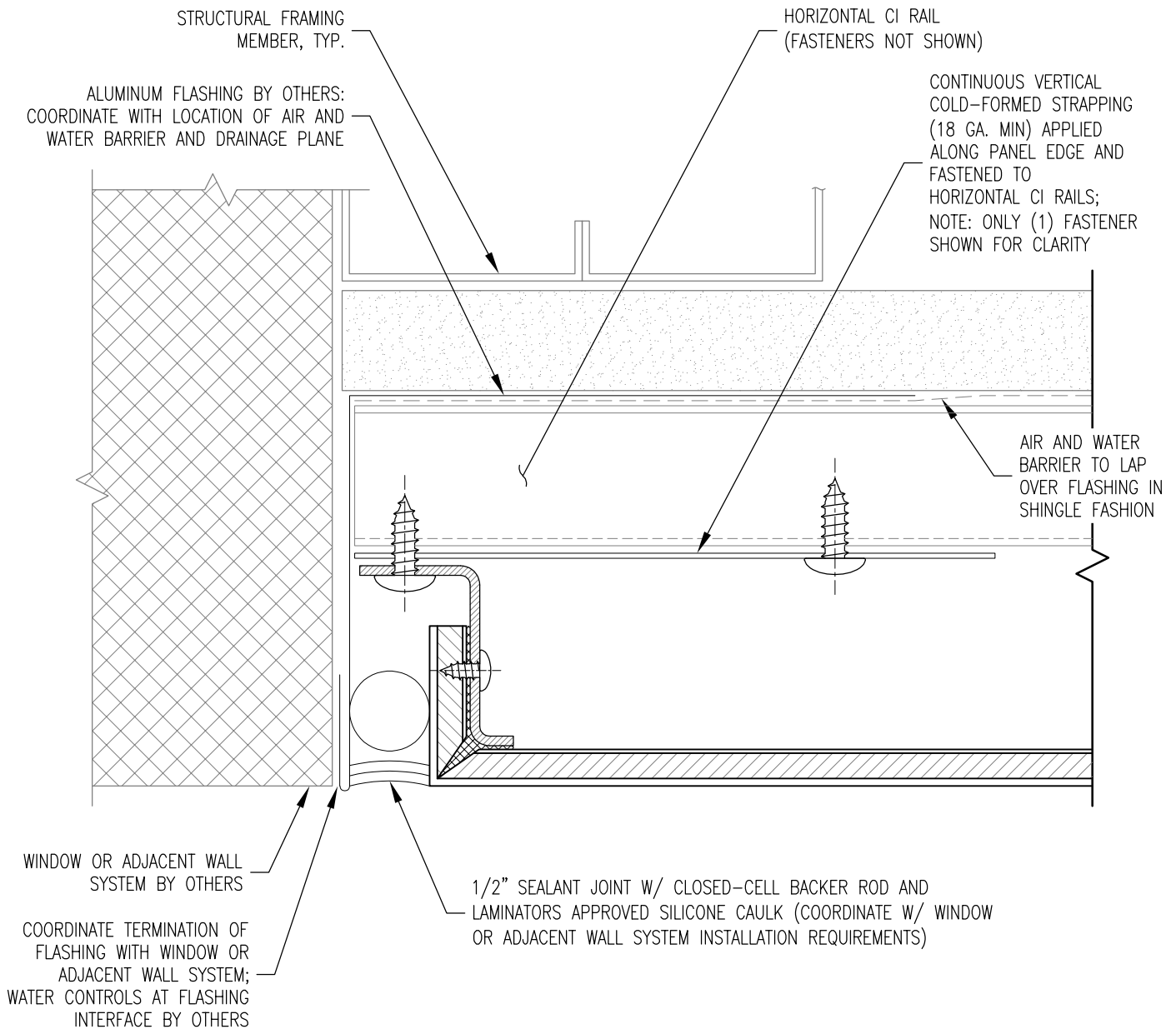
**ROUT & RETURN INSTALLATION SYSTEM
OVER ALT CI SYSTEM (WITH HORIZONTAL RAILS)**

Date:
1/19/2021

Drawn By:
JJM

Dwg. No.:
RR-ACI-H-03

Rev:
00



PLAN SECTION

DETAIL NOTES:

1. SPACING SHOWN BETWEEN SOME INSTALLATION SYSTEM COMPONENTS EXAGGERATED FOR CLARITY
2. REFER TO DETAILS RR-ACI-H-EL AND RR-ACI-H-ST FOR REQUIRED PANEL STIFFENER LAYOUT
3. REFER TO JOINT DETAILS RR-ACI-H-01H AND RR-ACI-H-01V FOR CLIP SPACING AND TYPICAL COMPONENTS NOT ANNOTATED



www.LaminatorsInc.com

877.OMEGA.77

WINDOW JAMB / VERTICAL EDGE DETAIL

ROUT & RETURN INSTALLATION SYSTEM
OVER ALT CI SYSTEM (WITH HORIZONTAL RAILS)

Date:
1/19/2021

Drawn By:
JJM

Dwg. No.:
RR-ACI-H-04

Rev:
00

METAL COPING AND BLOCKING
BY OTHERS; COORDINATE
SEQUENCING TO FACILITATE
PANEL SYSTEM INSTALLATION

IF DETAIL IS LOCATED IN THE
NFPA 285 ZONE, PROVIDE
ADDITIONAL #8 X 3/4" (MIN)
PPH SELF-DRILLING SCREW
PER DETAIL RR-ACI-H-01HA
(NOT SHOWN HERE)

HORIZONTAL FOAM TAPE APPLIED
BETWEEN PANEL AND FLASHING;
FOR VENTING, MAINTAIN 2" (MIN)
GAPS AT 24" O.C

PROVIDE 2" (MIN) LAP OF
FLASHING OVER PANEL

DRIP EDGE (OPTIONAL)

HORIZONTAL CI RAIL W/
1-1/4" (MIN) FACE WIDTH

FACE OF
CONTINUOUS
INSULATION
(CI)

SECTION

DETAIL NOTES:

1. SPACING SHOWN BETWEEN SOME
INSTALLATION SYSTEM COMPONENTS
EXAGGERATED FOR CLARITY
2. REFER TO DETAILS RR-ACI-H-EL
AND RR-ACI-H-ST FOR REQUIRED
PANEL STIFFENER LAYOUT
3. REFER TO JOINT DETAILS
RR-ACI-H-01H AND RR-ACI-H-01V
FOR CLIP SPACING AND TYPICAL
COMPONENTS NOT ANNOTATED



www.LaminatorsInc.com

877.OMEGA.77

TOP OF WALL DETAIL

ROUT & RETURN INSTALLATION SYSTEM
OVER ALT CI SYSTEM (WITH HORIZONTAL RAILS)

Date:
1/19/2021

Drawn By:
JJM

Dwg. No.:
RR-ACI-H-05

Rev:
00

ALUMINUM FLASHING
BY OTHERS; COORDINATE WITH
LOCATION OF AIR AND WATER
BARRIER AND DRAINAGE PLANE

FACE OF
CONTINUOUS
INSULATION
(CI)

AIR AND WATER BARRIER
TO LAP OVER FLASHING
IN SHINGLE FASHION

1/2" SEALANT JOINT W/
CLOSED-CELL BACKER ROD
AND LAMINATORS APPROVED
SILICONE CAULK; PROVIDE
3/8" (MIN) GAPS AT 24" O.C.
FOR VENTING AND DRAINAGE

HORIZONTAL CI RAIL W/
1-1/4" (MIN) FACE WIDTH

CONTINUOUS BUTYL
SEALANT BETWEEN METAL
FLASHING AND GRADE

GRADE

SECTION

DETAIL NOTES:

1. SPACING SHOWN BETWEEN SOME INSTALLATION SYSTEM COMPONENTS EXAGGERATED FOR CLARITY
2. REFER TO DETAILS RR-ACI-H-EL AND RR-ACI-H-ST FOR REQUIRED PANEL STIFFENER LAYOUT
3. REFER TO JOINT DETAILS RR-ACI-H-01H AND RR-ACI-H-01V FOR CLIP SPACING AND TYPICAL COMPONENTS NOT ANNOTATED



OMEGA PANEL PRODUCTS Ω

LAMINATORS INC.

www.LaminatorsInc.com

877.OMEGA.77

BASE OF WALL (GRADE) DETAIL

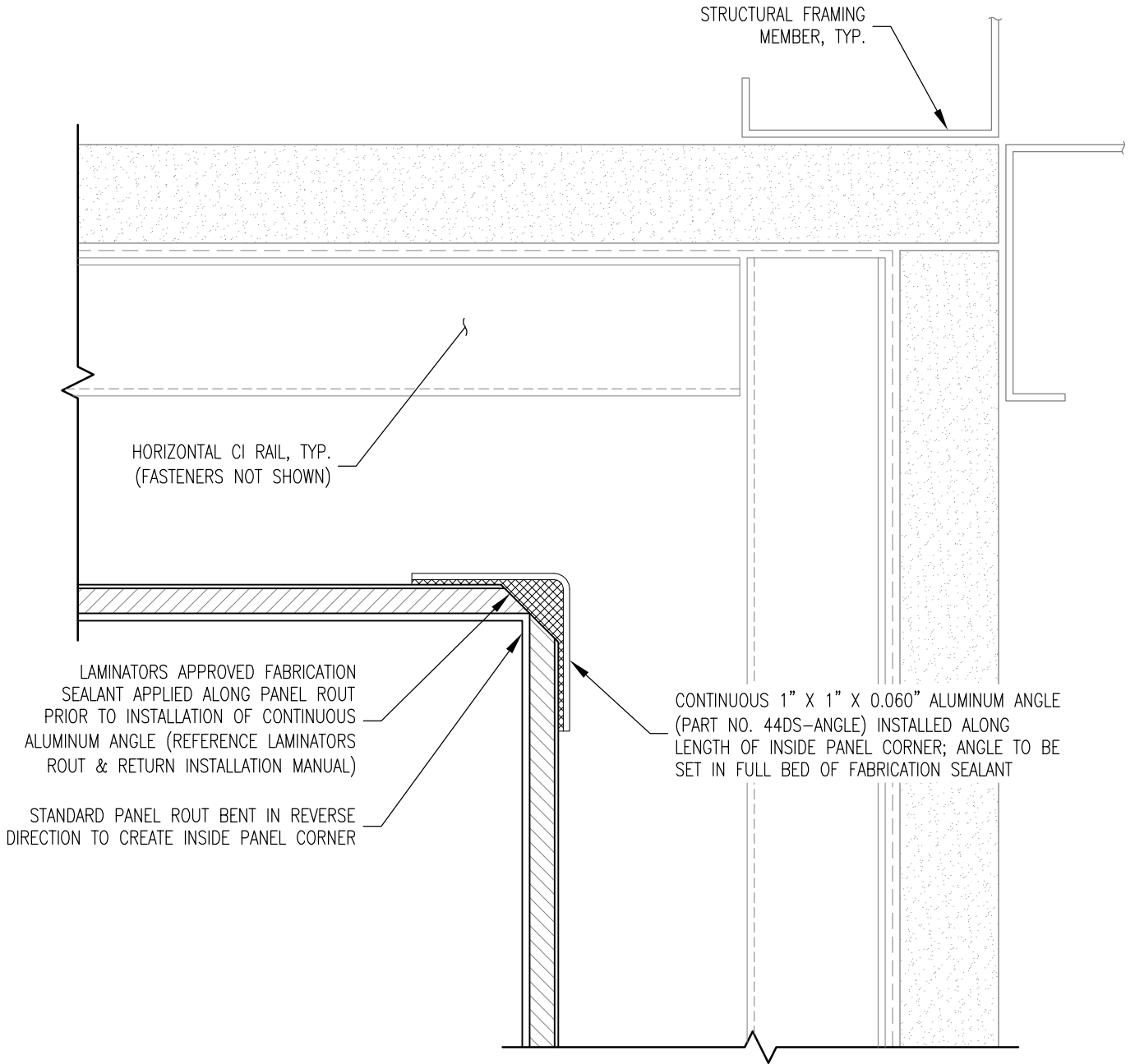
ROUT & RETURN INSTALLATION SYSTEM
OVER ALT CI SYSTEM (WITH HORIZONTAL RAILS)

Date:
1/19/2021

Drawn By:
JJM

Dwg. No.:
RR-ACI-H-06

Rev:
00



PLAN SECTION

DETAIL NOTES:

1. SPACING SHOWN BETWEEN SOME INSTALLATION SYSTEM COMPONENTS EXAGGERATED FOR CLARITY
2. REFER TO DETAILS RR-ACI-H-EL AND RR-ACI-H-ST FOR REQUIRED PANEL STIFFENER LAYOUT
3. REFER TO JOINT DETAILS RR-ACI-H-01H AND RR-ACI-H-01V FOR CLIP SPACING AND TYPICAL COMPONENTS NOT ANNOTATED

NOTE: THIS DETAIL IS ALSO APPLICABLE FOR SOFFIT-TO-WALL TRANSITIONS



www.LaminatorsInc.com

877.OMEGA.77

INSIDE CORNER DETAIL

ROUT & RETURN INSTALLATION SYSTEM OVER ALT CI SYSTEM (WITH HORIZONTAL RAILS)

Date: 1/19/2021	Drawn By: JJM	Dwg. No.: RR-ACI-H-07	Rev: 00
--------------------	------------------	--------------------------	------------

HORIZONTAL CI RAIL, TYP.
(FASTENERS NOT SHOWN)

STRUCTURAL FRAMING MEMBER, TYP.

CONTINUOUS 1" X 1" X 0.060" ALUMINUM ANGLE
(PART NO. 44DS-ANGLE) INSTALLED ALONG LENGTH
OF OUTSIDE PANEL CORNER; ANGLE TO BE SET IN
FULL BED OF FABRICATION SEALANT

LAMINATORS APPROVED FABRICATION SEALANT APPLIED
TO PANEL ROUT PRIOR TO BENDING TO FORM PANEL
CORNER, TYP. (REFERENCE LAMINATORS ROUT & RETURN
INSTALLATION MANUAL)

DETAIL NOTES:

1. SPACING SHOWN BETWEEN SOME
INSTALLATION SYSTEM COMPONENTS
EXAGGERATED FOR CLARITY
2. REFER TO DETAILS RR-ACI-H-EL
AND RR-ACI-H-ST FOR REQUIRED
PANEL STIFFENER LAYOUT
3. REFER TO JOINT DETAILS
RR-ACI-H-01H AND RR-ACI-H-01V
FOR CLIP SPACING AND TYPICAL
COMPONENTS NOT ANNOTATED

PLAN SECTION

NOTE: REFER TO DETAIL RR-ACI-H-09
FOR FASCIA-TO-SOFFIT TRANSITIONS



www.LaminatorsInc.com

877.OMEGA.77

OUTSIDE CORNER DETAIL

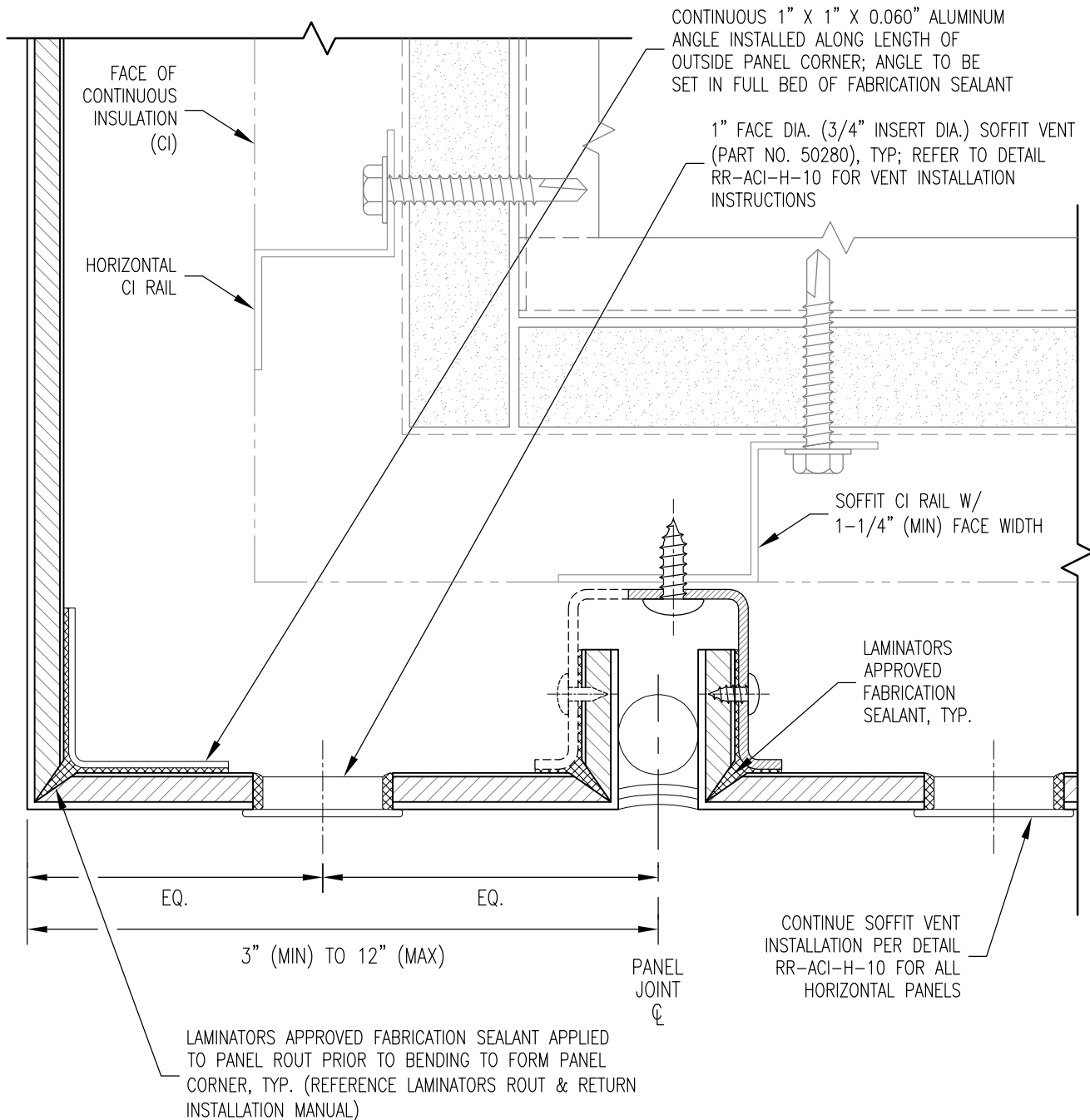
ROUT & RETURN INSTALLATION SYSTEM
OVER ALT CI SYSTEM (WITH HORIZONTAL RAILS)

Date:
1/19/2021

Drawn By:
JJM

Dwg. No.:
RR-ACI-H-08

Rev:
00



DETAIL NOTES:

1. SPACING SHOWN BETWEEN SOME INSTALLATION SYSTEM COMPONENTS EXAGGERATED FOR CLARITY
2. REFER TO DETAILS RR-ACI-H-EL AND RR-ACI-H-ST FOR REQUIRED PANEL STIFFENER LAYOUT
3. REFER TO JOINT DETAILS RR-ACI-H-01H AND RR-ACI-H-01V FOR CLIP SPACING AND TYPICAL COMPONENTS NOT ANNOTATED



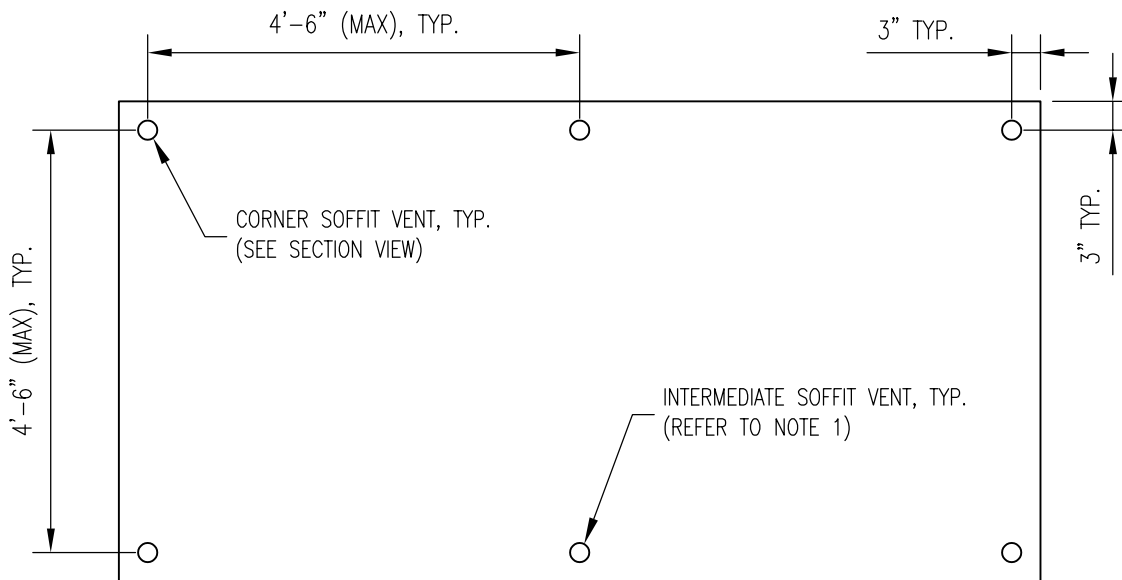
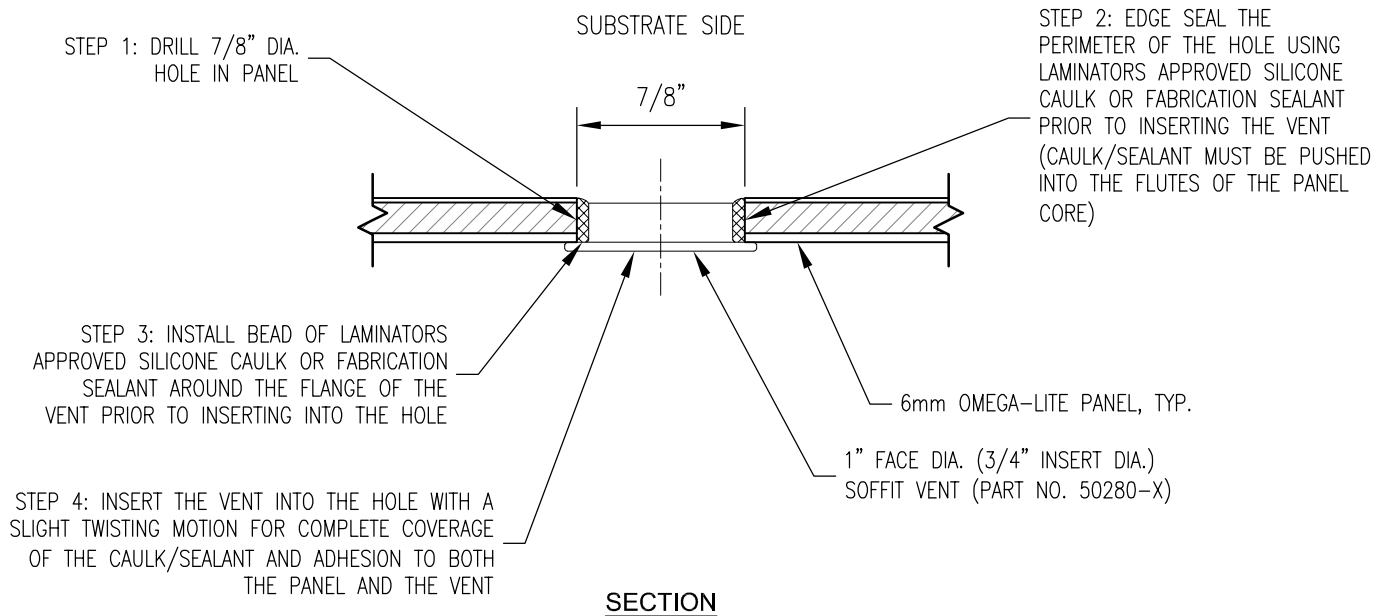
www.LaminatorsInc.com

877.OMEGA.77

FASCIA-TO-SOFFIT TRANSITION DETAIL

**ROUT & RETURN INSTALLATION SYSTEM
OVER ALT CI SYSTEM (WITH HORIZONTAL RAILS)**

Date: 1/19/2021	Drawn By: JJM	Dwg. No.: RR-ACI-H-09	Rev: 00
--------------------	------------------	--------------------------	------------



DETAIL NOTES:

1. FOR PANEL EDGE DIMENSIONS LARGER THAN 5'-0", INTERMEDIATE VENTS SHALL BE INSTALLED WITH EQUAL SPACING
2. FOR PANEL EDGE DIMENSIONS 12" AND SMALLER, A SINGLE ROW OF VENTS MAY BE INSTALLED ALONG THE CENTERLINE OF THE PANEL IN THE LONGER DIRECTION (IN PLACE OF TWO ROWS AS SHOWN ABOVE)
3. CONTACT LAMINATORS TECHNICAL SUPPORT FOR ADDITIONAL INFORMATION ON REQUIRED SOFFIT VENT INSTALLATION FOR UNIQUE PROJECT-SPECIFIC PANEL GEOMETRIES



www.LaminatorsInc.com

877.OMEGA.77

SOFFIT VENT REQUIREMENTS

**ROUT & RETURN INSTALLATION SYSTEM
OVER ALT CI SYSTEM (WITH HORIZONTAL RAILS)**

Date:
1/19/2021

Drawn By:
JJM

Dwg. No.:
RR-ACI-H-10

Rev:
00