

## IMPORTANT NOTICE

The following document is NOT comprehensive for design, bidding, or installation when used in isolation. Please refer to all related documents in their entirety for complete information regarding this panel system. Such documents include, but may not be limited to, Technical Guides, Architectural Color Chart, Approved Materials List, Systems Guides, Technical Bulletins, Technical Data Sheets, CAD Drawings, Specifications, and Submittals. Visit [LaminatorsInc.com](http://LaminatorsInc.com) for information on the latest documents regarding this panel system.

To consult directly with one of our Professional Engineers regarding our panel systems, contact Laminators Technical Support between the hours of 8:00am – 5:00pm EST:

800.523.2347

[LaminatorsInc.com](http://LaminatorsInc.com)

[engineering@laminatorsinc.com](mailto:engineering@laminatorsinc.com)

### **SYSTEM CAPACITY NOTICE**

Project-specific Components and Cladding wind loads (Required Strength,  $R_a$ ) shall not exceed Available Load-Carrying Capacity of system (Allowable Strength,  $R_n/\Omega$ ).

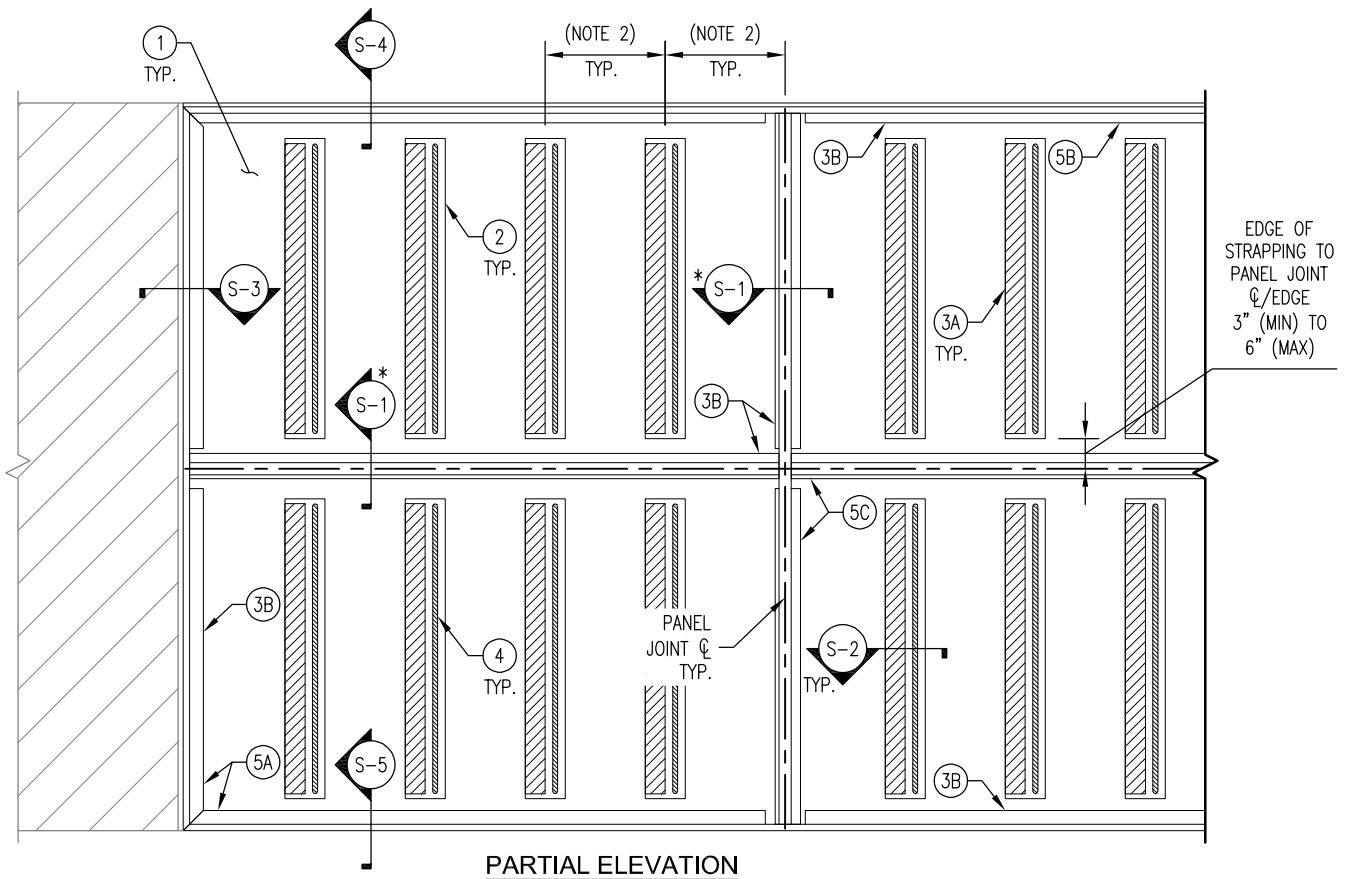
- A. Project-specific Components and Cladding wind loads (referred to as “Wind Loads” on EL-1.0) are to be determined by the Design Professional of Record (DPR).
- B. Available Load-Carrying Capacity of system (up to 52 PSF) is based on Allowable Strength Design (ASD) method.
- C. For project-specific Components and Cladding wind loads greater than 52 PSF, contact Laminators Technical Support for project-specific detailing requirements.

### **NFPA 285 NOTICE**

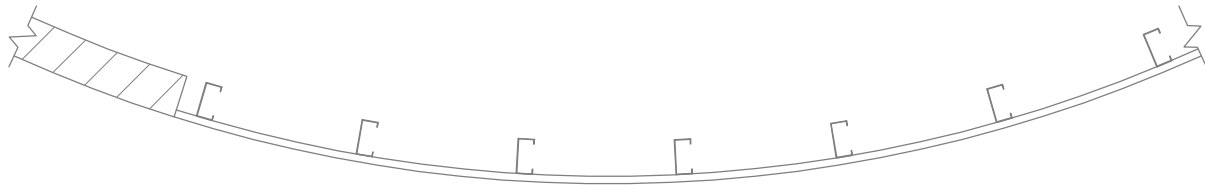
Laminators has not performed fire testing of the Omega-Flex Installation System, nor has any application of an engineering extension been made with respect to NFPA 285 compliance.

DRAWING INDEX – OF-PLY DETAIL SET (Rev 00, 03/15/2021)

DWG NO.	TITLE	REV DATE	REV	CHANGE FROM PREVIOUS REV
EL-1.0	System Elevation	3/15/2021	00	
S-1.1	Joint Detail (H-Molding)	3/15/2021	00	
S-1.2	Joint Detail (Reveal H-Molding)	3/15/2021	00	
S-2	Intermediate Panel Support Detail	3/15/2021	00	
S-3	Vertical Edge Detail	3/15/2021	00	
S-4	Top Detail	3/15/2021	00	
S-5	Base Detail	3/15/2021	00	
M-1	Panel Sizing Guidelines	3/15/2021	00	



**PARTIAL ELEVATION**



**PARTIAL PLAN**

**NOTES:**

- \* DENOTES SECTIONS WITH AT LEAST (2) CONFIGURATIONS AVAILABLE (EX. S-1.1, S-1.2, ETC)
- ① 1/2" (MIN) CURVED STRUCTURAL SHEATHING (PLYWOOD OR OSB) W/ APPLIED AIR AND WATER BARRIER (AWB); TYPE OF AWB TO BE SELECTED BY DESIGN PROFESSIONAL OF RECORD
- ② VERTICAL 4" COLD-FORMED STRAPPING (18 GA. MIN)
  - SPACING OF STRAPPING TO BE BASED ON WIND LOADS:
    - i. UP TO 23 PSF (ASD): 12" O.C. (MAX)
    - ii. GREATER THAN 23 PSF (ASD), UP TO 33 PSF (ASD): 10" O.C. (MAX)
    - iii. GREATER THAN 33 PSF (ASD), UP TO 52 PSF (ASD): 8" O.C. (MAX)
- ③ FOAM TAPE (PART NO. 12847)
  - A. APPLIED TO COLD-FORMED STRAPPING; ALIGN FOAM TAPE EDGE WITH COLD-FORMED STRAPPING EDGE
  - B. APPLIED TO SUBSTRATE BEHIND ALL MOLDINGS (NOT SHOWN) WITH 2" GAPS AT 24" O.C. (MAX) ALONG HORIZONTAL MOLDINGS ONLY
- ④ 1/4" (MIN) TO 3/8" (MAX) BEAD OF LAMINATORS APPROVED PANEL ADHESIVE APPLIED TO COLD-FORMED STRAPPING; CENTER ADHESIVE BEAD 1" FROM EDGE OF FOAM TAPE
- ⑤ MOLDING LAYOUT SHOWN FOR PANEL INSTALLATION WITH VERTICAL PASS-THROUGH JOINTS; REFER TO SYSTEM GUIDE FOR MOLDING NOTCHING PROCEDURES AND SEQUENCING:
  - A. J-MOLDING (PART NO. 4515X) INSTALLED ALONG BASE AND LEFT VERTICAL EDGE
  - B. TERMINATION J-MOLDING (PART NO. 4565X) INSTALLED ALONG TOP AND RIGHT VERTICAL EDGE (NOT SHOWN)
  - C. H-MOLDINGS (PART NO. 4505X) OR REVEAL H-MOLDINGS (PART NO. 4595X) INSTALLED ALONG HORIZONTAL AND VERTICAL PANEL JOINTS (H-MOLDINGS SHOWN)

**FASTENING REQUIREMENTS (BASED ON WIND LOADS):**  
 UP TO 52 PSF (ASD):

- **STRAPPING:** FASTEN COLD-FORMED STRAPPING TO STRUCTURAL SHEATHING USING (1) #8 X 1" (MIN) PHILLIPS PAN HEAD (PPH) OR PHILLIPS MODIFIED TRUSS HEAD (PMTH) SELF-DRILLING SCREW AT 12" O.C. (MAX), STAGGERED, 2 SCREWS (MIN); MAINTAIN 1/2" (MIN) DISTANCE FROM COLD-FORMED STRAPPING EDGE
- **MOLDINGS:** FASTEN MOLDINGS TO STRUCTURAL SHEATHING USING (1) #8 X 1" (MIN) PMTH SELF-DRILLING SCREW AT 12" O.C. (MAX) FOR J-, H-, AND REVEAL H-MOLDINGS AND (1) #8 X 1" (MIN) PPH SCREW AT 12" O.C. (MAX) FOR TERMINATION J-MOLDINGS



www.LaminatorsInc.com

800.523.2347

**SYSTEM ELEVATION**  
**OMEGA-FLEX INSTALLATION SYSTEM**  
**OVER PLYWOOD OR OSB (STRUCTURAL) SHEATHING**

Date: 3/15/2021	Drawn By: JJM	Detail Set: OF-PLY	Dwg. No.: EL-1.0	Rev: 00
--------------------	------------------	-----------------------	---------------------	------------

OMEGA-FLEX  
INSTALLATION SYSTEM  
(3/8" NOM. DEPTH)

NEW OR EXISTING EXTERIOR  
WALL ASSEMBLY WITH  
1/2" (MIN) CURVED  
STRUCTURAL SHEATHING  
(PLYWOOD OR OSB)

AIR AND WATER BARRIER BY OTHERS

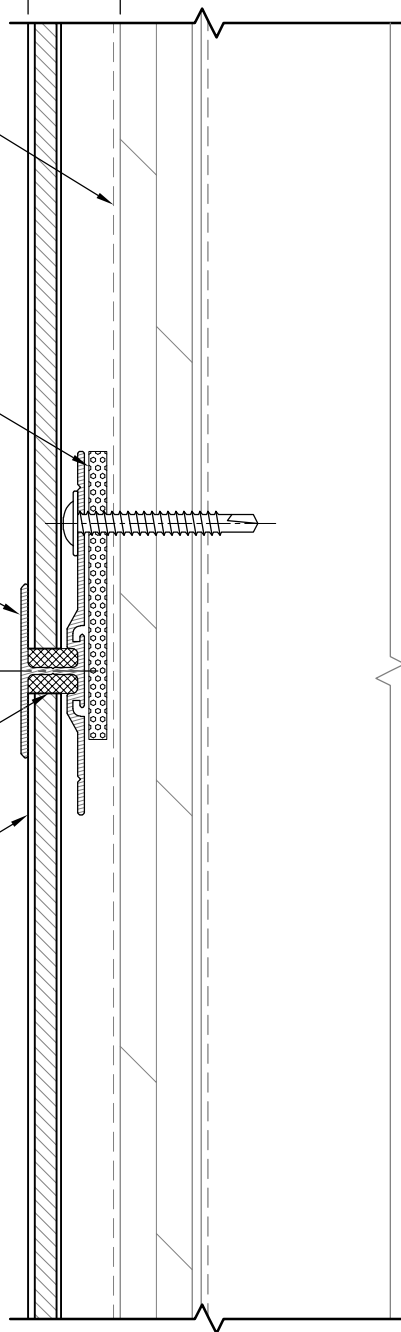
FOAM TAPE (PART NO. 12847) ALIGNED WITH  
MOLDING EDGE; GAPS MAINTAINED IN HORIZONTAL  
FOAM TAPE PER NOTE 3B ON EL-1.0

H-MOLDING (PART NO. 4505X) FASTENED TO STRUCTURAL  
SHEATHING (CURVE HORIZONTAL MOLDING AS REQUIRED);  
FASTENER SIDE OF MOLDING ALIGNED WITH EDGE OF  
FOAM TAPE

PANEL JOINT  $\phi$

LAMINATORS APPROVED SILICONE CAULK, TYP.

6mm OMEGA-FLEX PANEL, TYP.



SECTION

DETAIL NOTES:

1. SPACING SHOWN BETWEEN SOME INSTALLATION SYSTEM COMPONENTS EXAGGERATED FOR CLARITY
2. CURVED SUBSTRATES SHOWN FLAT FOR CLARITY
3. REFER TO EL-1.0 FOR LAYOUT OF STRAPPING, FOAM TAPE, PANEL ADHESIVE, AND MOLDINGS
4. REFER TO EL-1.0 FOR STRAPPING AND MOLDING FASTENING REQUIREMENTS



www.LaminatorsInc.com

800.523.2347

JOINT DETAIL (H-MOLDING)

OMEGA-FLEX INSTALLATION SYSTEM  
OVER PLYWOOD OR OSB (STRUCTURAL) SHEATHING

Date:  
3/15/2021

Drawn By:  
JJM

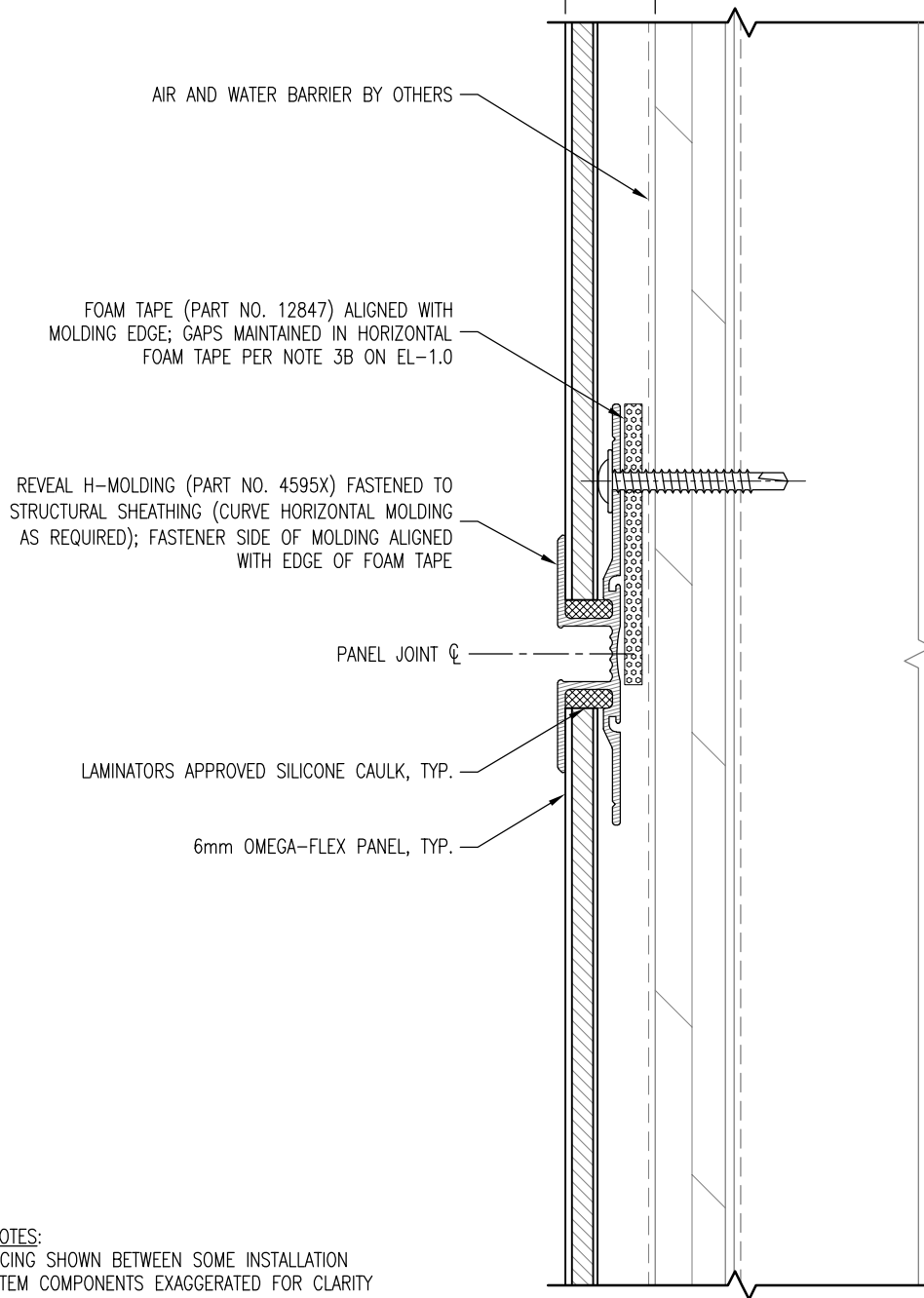
Detail Set:  
OF-PLY

Dwg. No.:  
S-1.1

Rev:  
00

OMEGA-FLEX  
INSTALLATION SYSTEM  
(3/8" NOM. DEPTH)

NEW OR EXISTING EXTERIOR  
WALL ASSEMBLY WITH  
1/2" (MIN) CURVED  
STRUCTURAL SHEATHING  
(PLYWOOD OR OSB)



AIR AND WATER BARRIER BY OTHERS

FOAM TAPE (PART NO. 12847) ALIGNED WITH  
MOLDING EDGE; GAPS MAINTAINED IN HORIZONTAL  
FOAM TAPE PER NOTE 3B ON EL-1.0

REVEAL H-MOLDING (PART NO. 4595X) FASTENED TO  
STRUCTURAL SHEATHING (CURVE HORIZONTAL MOLDING  
AS REQUIRED); FASTENER SIDE OF MOLDING ALIGNED  
WITH EDGE OF FOAM TAPE

PANEL JOINT  $\text{C}$

LAMINATORS APPROVED SILICONE CAULK, TYP.

6mm OMEGA-FLEX PANEL, TYP.

SECTION

DETAIL NOTES:

1. SPACING SHOWN BETWEEN SOME INSTALLATION SYSTEM COMPONENTS EXAGGERATED FOR CLARITY
2. CURVED SUBSTRATES SHOWN FLAT FOR CLARITY
3. REFER TO EL-1.0 FOR LAYOUT OF STRAPPING, FOAM TAPE, PANEL ADHESIVE, AND MOLDINGS
4. REFER TO EL-1.0 FOR STRAPPING AND MOLDING FASTENING REQUIREMENTS



www.LaminatorsInc.com

800.523.2347

JOINT DETAIL (REVEAL H-MOLDING)

OMEGA-FLEX INSTALLATION SYSTEM  
OVER PLYWOOD OR OSB (STRUCTURAL) SHEATHING

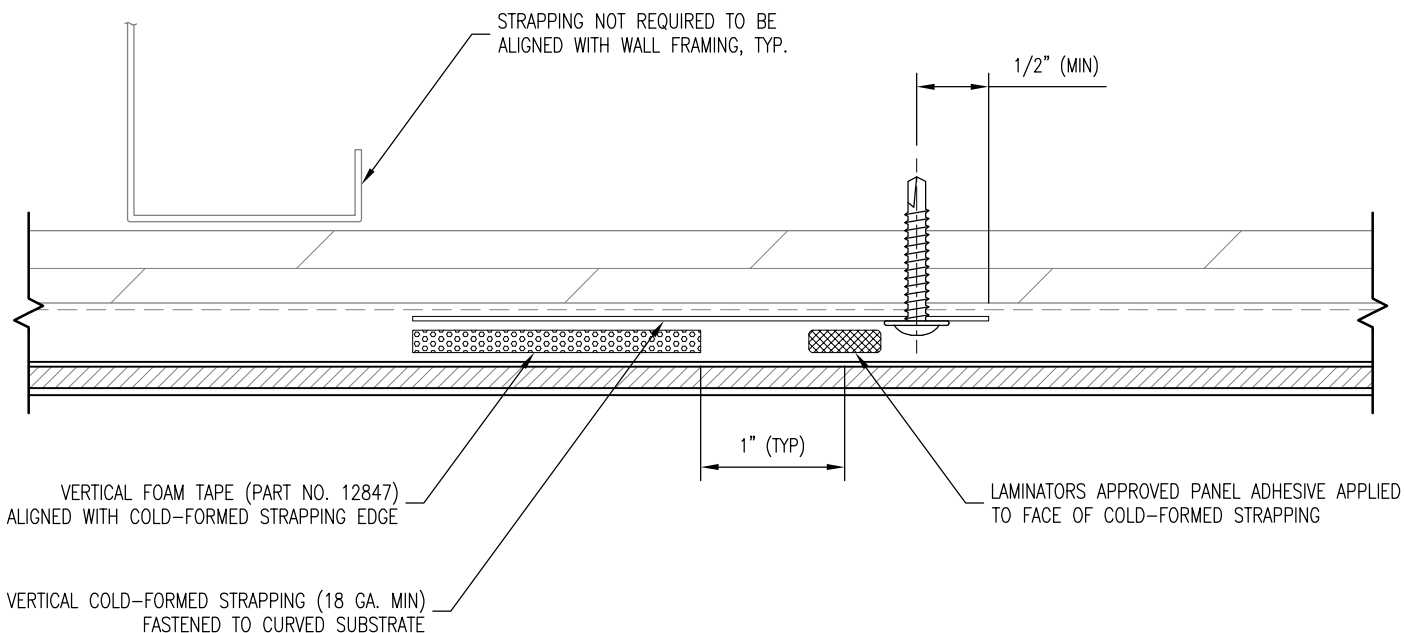
Date:  
3/15/2021

Drawn By:  
JJM

Detail Set:  
OF-PLY

Dwg. No.:  
S-1.2

Rev:  
00



**PLAN SECTION**

**DETAIL NOTES:**

1. SPACING SHOWN BETWEEN SOME INSTALLATION SYSTEM COMPONENTS EXAGGERATED FOR CLARITY
2. CURVED SUBSTRATES SHOWN FLAT FOR CLARITY
3. REFER TO EL-1.0 FOR LAYOUT OF STRAPPING, FOAM TAPE, PANEL ADHESIVE, AND MOLDINGS
4. REFER TO EL-1.0 FOR STRAPPING AND MOLDING FASTENING REQUIREMENTS
5. REFER TO S-1.1 OR S-1.2 FOR TYPICAL COMPONENTS NOT ANNOTATED



www.LaminatorsInc.com

800.523.2347

INTERMEDIATE PANEL SUPPORT DETAIL

OMEGA-FLEX INSTALLATION SYSTEM  
OVER PLYWOOD OR OSB (STRUCTURAL) SHEATHING

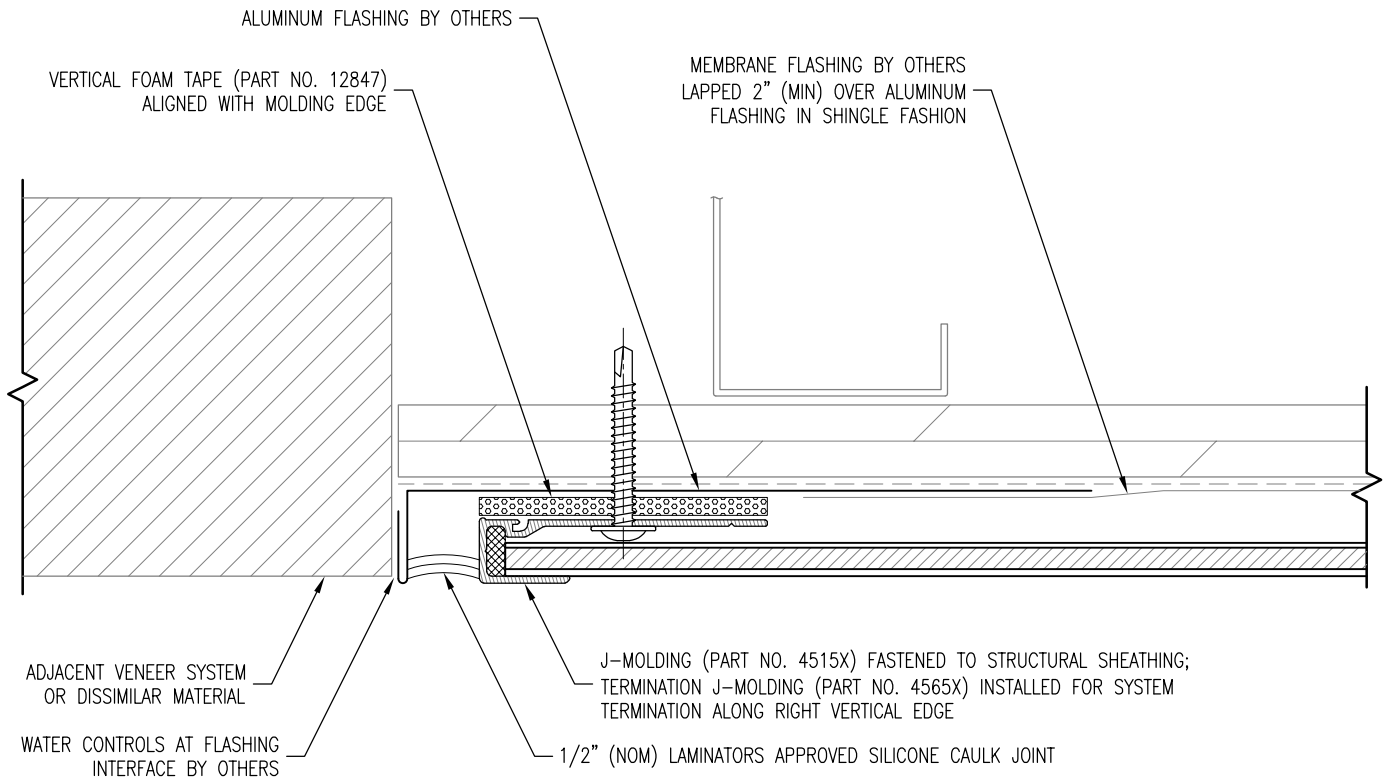
Date:  
3/15/2021

Drawn By:  
JJM

Detail Set:  
OF-PLY

Dwg. No.:  
S-2

Rev:  
00



**PLAN SECTION**

**DETAIL NOTES:**

1. SPACING SHOWN BETWEEN SOME INSTALLATION SYSTEM COMPONENTS EXAGGERATED FOR CLARITY
2. CURVED SUBSTRATES SHOWN FLAT FOR CLARITY
3. REFER TO EL-1.0 FOR LAYOUT OF STRAPPING, FOAM TAPE, PANEL ADHESIVE, AND MOLDINGS
4. REFER TO EL-1.0 FOR STRAPPING AND MOLDING FASTENING REQUIREMENTS
5. REFER TO S-1.1 OR S-1.2 FOR TYPICAL COMPONENTS NOT ANNOTATED



www.LaminatorsInc.com

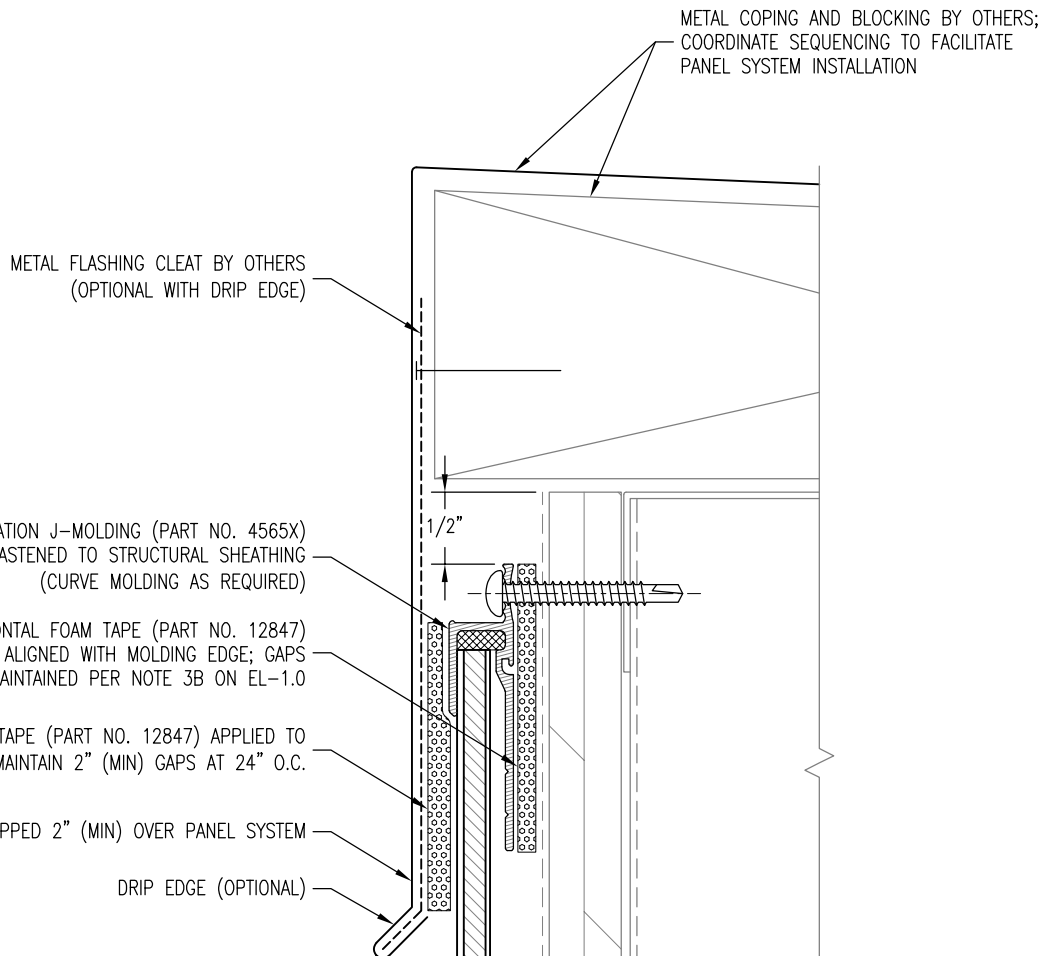
800.523.2347

**VERTICAL EDGE DETAIL**

**OMEGA-FLEX INSTALLATION SYSTEM  
OVER PLYWOOD OR OSB (STRUCTURAL) SHEATHING**

Date: 3/15/2021	Drawn By: JJM	Detail Set: OF-PLY	Dwg. No.: S-3	Rev: 00
--------------------	------------------	-----------------------	------------------	------------





DETAIL NOTES:

1. SPACING SHOWN BETWEEN SOME INSTALLATION SYSTEM COMPONENTS EXAGGERATED FOR CLARITY
2. CURVED SUBSTRATES SHOWN FLAT FOR CLARITY
3. REFER TO EL-1.0 FOR LAYOUT OF STRAPPING, FOAM TAPE, PANEL ADHESIVE, AND MOLDINGS
4. REFER TO EL-1.0 FOR STRAPPING AND MOLDING FASTENING REQUIREMENTS
5. REFER TO S-1.1 OR S-1.2 FOR TYPICAL COMPONENTS NOT ANNOTATED



www.LaminatorsInc.com

800.523.2347

TOP DETAIL

OMEGA-FLEX INSTALLATION SYSTEM  
OVER PLYWOOD OR OSB (STRUCTURAL) SHEATHING

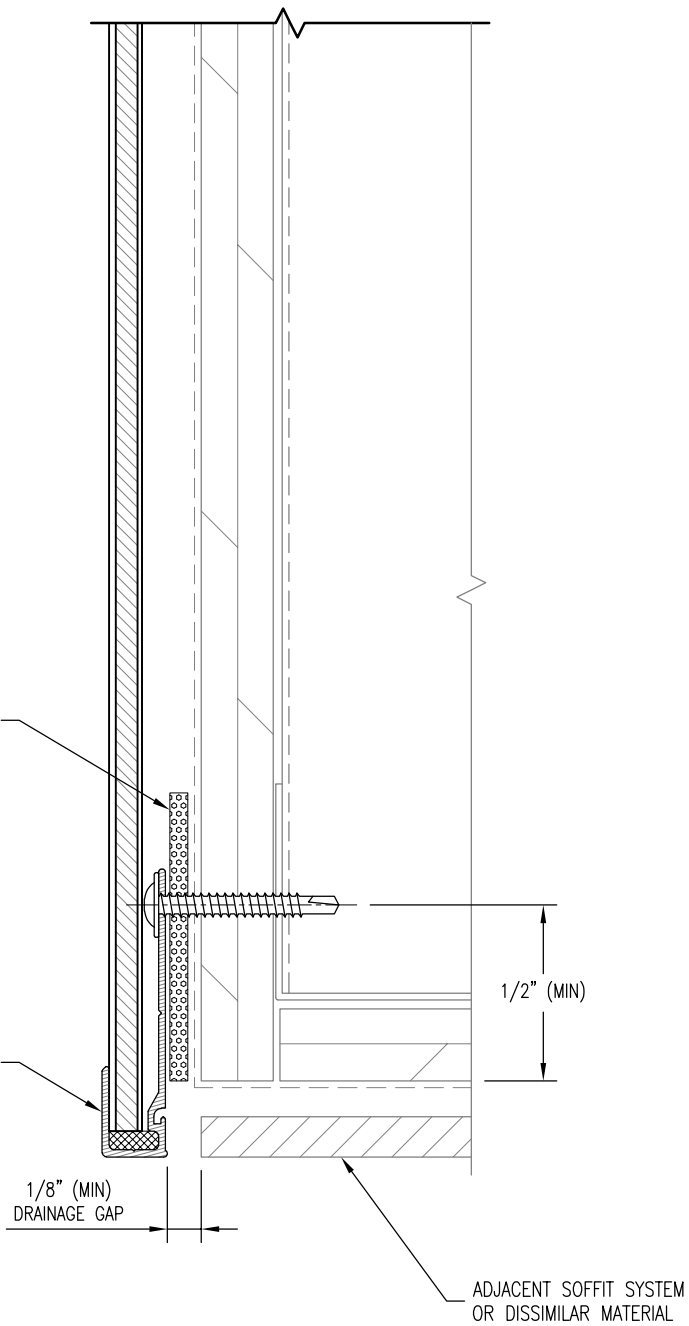
Date:  
3/15/2021

Drawn By:  
JJM

Detail Set:  
OF-PLY

Dwg. No.:  
S-4

Rev:  
00



HORIZONTAL FOAM TAPE (PART NO. 12847)  
 ALIGNED WITH STRUCTURAL SHEATHING EDGE;  
 GAPS MAINTAINED PER NOTE 3B ON EL-1.0

J-MOLDING (PART NO. 4515X) FASTENED TO STRUCTURAL  
 SHEATHING (CURVE MOLDING AS REQUIRED);  
 NOTE: POSITION OF J-MOLDING MAY BE ADJUSTED TO  
 ALLOW FOR INSTALLATION OF KICK-OUT FLASHING AT  
 BASE (IF REQUIRED)

1/8" (MIN)  
 DRAINAGE GAP

1/2" (MIN)

ADJACENT SOFFIT SYSTEM  
 OR DISSIMILAR MATERIAL

**SECTION**

**DETAIL NOTES:**

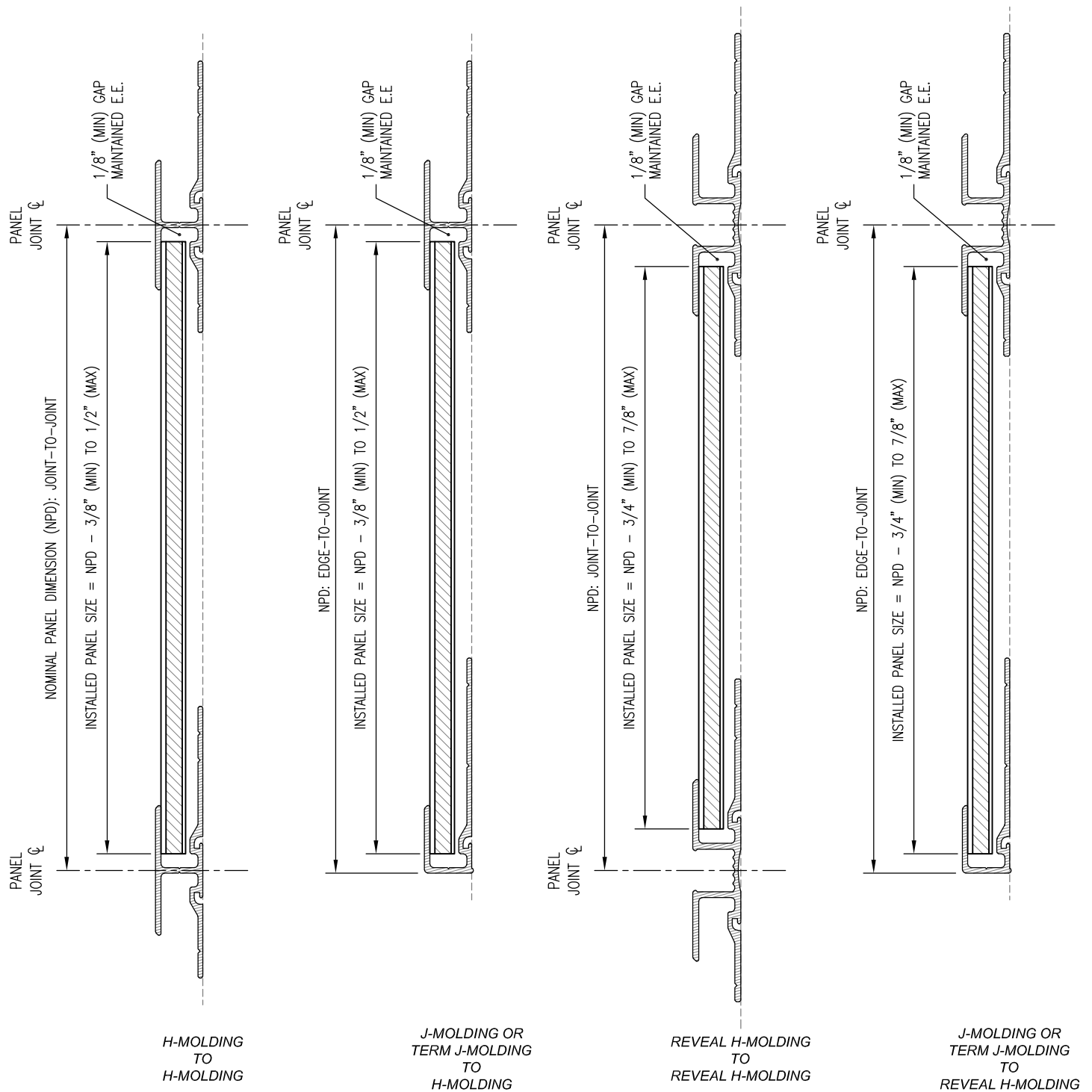
1. SPACING SHOWN BETWEEN SOME INSTALLATION SYSTEM COMPONENTS EXAGGERATED FOR CLARITY
2. CURVED SUBSTRATES SHOWN FLAT FOR CLARITY
3. REFER TO EL-1.0 FOR LAYOUT OF STRAPPING, FOAM TAPE, PANEL ADHESIVE, AND MOLDINGS
4. REFER TO EL-1.0 FOR STRAPPING AND MOLDING FASTENING REQUIREMENTS
5. REFER TO S-1.1 OR S-1.2 FOR TYPICAL COMPONENTS NOT ANNOTATED



www.LaminatorsInc.com

800.523.2347

<b>BASE DETAIL</b>				
<b>OMEGA-FLEX INSTALLATION SYSTEM OVER PLYWOOD OR OSB (STRUCTURAL) SHEATHING</b>				
Date: 3/15/2021	Drawn By: JJM	Detail Set: OF-PLY	Dwg. No.: S-5	Rev: 00



**DETAIL NOTES:**

1. PANEL SIZING GUIDELINES ASSUME TYPICAL INSTALLATION CONDITIONS WITH A TEMPERATURE CHANGE OF UP TO  $\pm 100^{\circ}\text{F}$  AT THE SURFACE OF ALUMINUM
2. CONTACT LAMINATORS TECHNICAL SUPPORT FOR PANEL SIZING RECOMMENDATIONS RELATED TO PROJECT-SPECIFIC COLD OR HOT WEATHER INSTALLATIONS
3. SILICONE CAULK NOT SHOWN IN MOLDINGS FOR CLARITY



www.LaminatorsInc.com

800.523.2347

**PANEL SIZING GUIDELINES**

**OMEGA-FLEX INSTALLATION SYSTEM  
OVER PLYWOOD OR OSB (STRUCTURAL) SHEATHING**

Date:  
3/15/2021

Drawn By:  
JJM

Detail Set:  
OF-PLY

Dwg. No.:  
M-1

Rev:  
00