

## IMPORTANT NOTICE

The following document is NOT comprehensive for design, bidding, or installation when used in isolation. Please refer to all related documents in their entirety for complete information regarding this ACM panel system. Such documents include, but may not be limited to, Technical Guides, Architectural Color Chart, Approved Materials List, Systems Guides, Technical Bulletins, Technical Data Sheets, CAD Drawings, Specifications, and Submittals. Visit [LaminatorsInc.com](http://LaminatorsInc.com) for information on the latest documents regarding this panel system.

## INSTALLATION GUIDE ERRATA – ROUT & RETURN

1. [Effective 2/7/2020] Modify Page 6, Step 7 as follows:
  - This step is to be omitted. No fasteners are to be installed in reinforcing angles (Part No. 44DS-ANGLE)

## CONTACT US

To consult directly with one of our Professional Engineers regarding our ACM panel systems, contact Laminators Technical Support between the hours of 8:00am – 5:00pm EST:

800.523.2347  
[LaminatorsInc.com](http://LaminatorsInc.com)  
[engineering@laminatorsinc.com](mailto:engineering@laminatorsinc.com)

The following document contains an abbreviated detail set for the application of the Rout & Return Installation System over Omega CI (OCI) rigid insulation panels. The abbreviated detail set is intended to convey the basic concept of a Rout & Return installation over OCI including specialized detailing requirements for NFPA 285 compliance. Please contact Laminators Technical Support for instructions on how to apply standard detailing for the Rout & Return Installation System over plywood or OSB (structural) sheathing to conditions not addressed in the abbreviated detail set.

## **INSTRUCTIONS FOR NFPA 285 COMPLIANCE**

With respect to fire performance, note the following when detailing the Rout & Return Installation System over Omega CI rigid insulation panels:

1. The following document represents the referenced system as it has been designed, detailed, and tested and its relationship with a typical exterior wall assembly. As such, the document may be considered a conceptual baseline for the system and appropriately applied to project-specific conditions.
  - a. Laminators defines the NFPA 285 Zone as the area contained within a 10'-0" height above any window by the width of the window opening. The following document does not include a partial elevation that outlines the NFPA 285 Zone and related dimensions, notes, and sections. However, in order to maintain NFPA 285 compliance, specialized detailing is still required in the NFPA 285 Zone and at window heads and jambs as follows:
    - i. All horizontal panel joints within the NFPA 285 Zone require additional fasteners per detail S-1.
    - ii. Additional layers of steel flashing are required at window heads and jambs per detail S-2 and S-3, respectively.
    - iii. Vertical panel joints are not permitted above window openings within the NFPA 285 Zone. All vertical joints must align with vertical window jambs or mullions.
2. Through the use of a specific Engineering Evaluation (EEV) available from Laminators, engineering extensions may be made (in lieu of what has been tested) with respect to base wall framing, fire-stopping at floor lines, cavity insulation, and water-resistive barrier (WRB) components while maintaining NFPA 285 compliance. The EEV may be required for submission to the Authority Having Jurisdiction (AHJ) to support the extensions.
3. If one or more engineering extensions are required beyond what is provided in the EEV available from Laminators, it is the responsibility of a third-party to pursue obtaining a separate EEV that adequately addresses each intended substitution. Note that Laminators cannot serve as the third-party in efforts to obtain such an EEV.

Note that the application of any engineering extension for NFPA 285 compliance will need to be evaluated by the Design Professional of Record (DPR) with respect to potential impact on any air, structural, and water performance of the project-specific exterior wall assembly. It is possible that components substituted to achieve fire testing compliance will affect the assembly differently with respect to air, structural, and water performance and need to be coordinated.

If the Rout & Return Installation System is intended to be installed over a different substrate (e.g. fire-retardant-treated wood (FRTW) structural sheathing (panels), gypsum (non-structural) sheathing, CMU, or concrete), please defer to the appropriate detail set.

DRAWING INDEX – RR-OCI DETAIL SET (Rev 04, 12/03/2020)

DWG NO.	TITLE	REV DATE	REV	CHANGE FROM PREVIOUS REV
S-1	Horizontal Joint Detail (NFPA 285 Zone)	12/3/2020	04	Fastener part number added; Min screw length specified
S-2	Window Head Detail (NFPA 285 Zone)	1/15/2020	01	
S-3	Window Jamb Detail (NFPA 285 Zone)	1/15/2020	01	

## FIRE PERFORMANCE

THE WALL ASSEMBLY DETAILED HEREIN, COMPRISED OF LAMINATORS' ROUT & RETURN ACM PANEL SYSTEM AND OMEGA CI RIGID INSULATION PANELS, PROVIDES THE FOLLOWING FIRE PERFORMANCE:

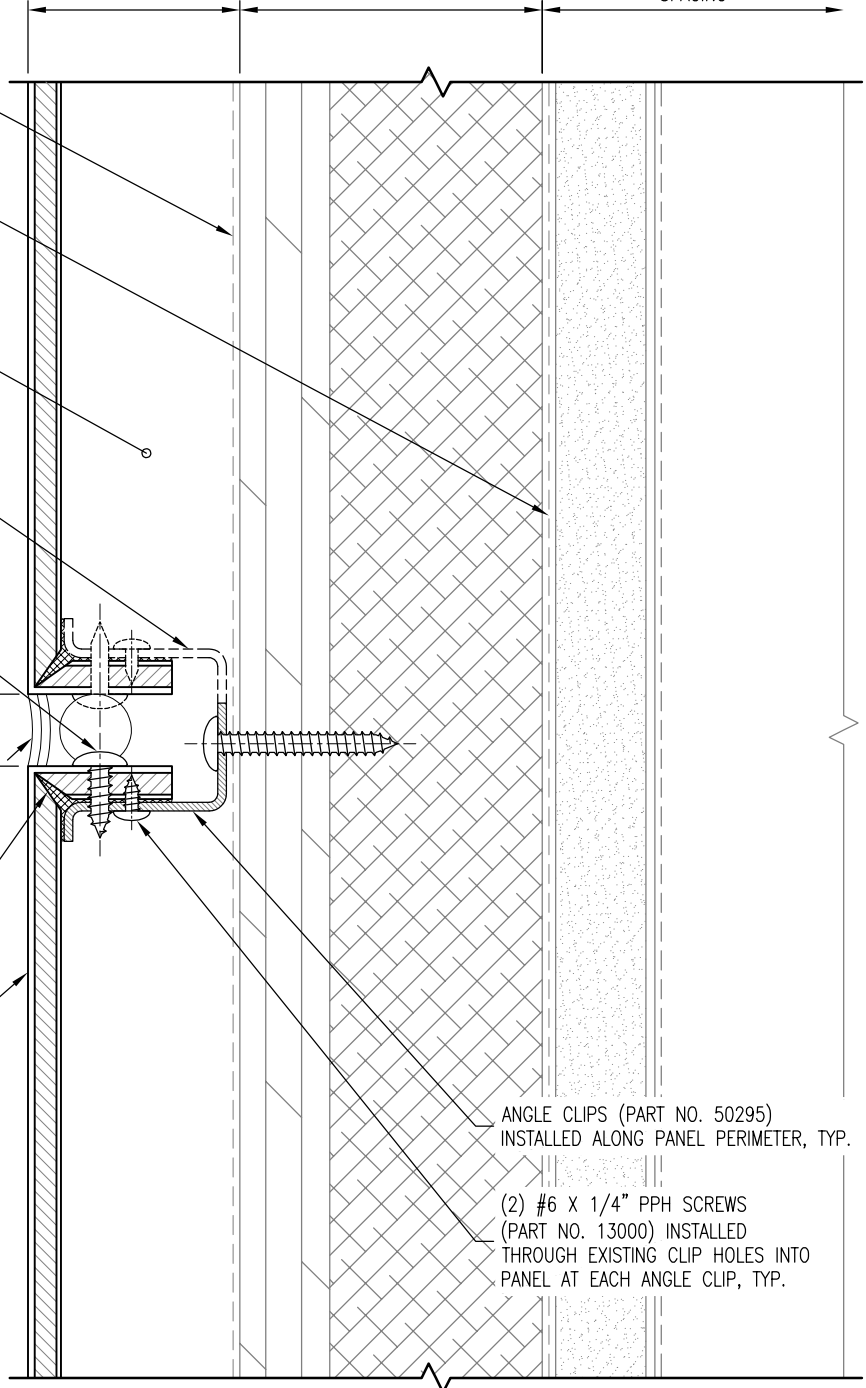
- NFPA 285 COMPLIANCE
- 1-HOUR FIRE RATING PER ANSI/UL 263 DESIGN NO. V454

NEW OR EXISTING EXTERIOR WALL ASSEMBLY WITH 5/8" (MAX) EXTERIOR-GRADE GYPSUM SHEATHING AND 18 GA. (MIN) STEEL STUDS AT 16" O.C. (MAX) SPACING

ROUT & RETURN INSTALLATION SYSTEM (1-3/8" NOM. DEPTH)

OMEGA CI RIGID INSULATION PANELS (2.1 INCH)

- REQUIRED VAPOR-PERMEABLE AIR AND WATER BARRIER BY OTHERS APPLIED TO FACE OF OMEGA CI PANELS
- OPTIONAL AIR AND WATER BARRIER BY OTHERS (INCLUSION TO BE DETERMINED BY DESIGN PROFESSIONAL OF RECORD; VAPOR-PERMEABLE RECOMMENDED)
- PANEL STIFFENERS NOT SHOWN FOR CLARITY; REQUIRED PANEL STIFFENING TO BE BASED ON PROJECT SPECIFIC WIND LOADS (REFER TO ROUT & RETURN OVER PLYWOOD OR OSB SHEATHING, DETAILS RR-PLY-EL AND RR-PLY-ST FOR ADDITIONAL INFORMATION)
- ANGLE CLIP BEYOND (FASTENING TO SHEATHING NOT SHOWN FOR CLARITY)
- (1) #8 X 3/4" (MIN) PPH SELF-DRILLING SCREW INSTALLED THROUGH PANEL FACE INTO EACH ANGLE CLIP, TYP. (LOCATE SCREW AT CENTERLINE OF PANEL RETURN LEG AND MID-LENGTH OF ANGLE CLIP)
- 1/2" SEALANT JOINT W/ CLOSED-CELL BACKER ROD AND LAMINATORS APPROVED CAULK
- LAMINATORS APPROVED FABRICATION SEALANT APPLIED TO PANEL ROUT PRIOR TO BENDING TO FORM PANEL RETURN LEG, TYP. (REFER TO LAMINATORS ROUT & RETURN INSTALLATION MANUAL)
- 6mm OMEGA-LITE PANEL, TYP.



ANGLE CLIPS (PART NO. 50295) INSTALLED ALONG PANEL PERIMETER, TYP.

(2) #6 X 1/4" PPH SCREWS (PART NO. 13000) INSTALLED THROUGH EXISTING CLIP HOLES INTO PANEL AT EACH ANGLE CLIP, TYP.

SECTION

### DETAIL NOTES:

1. SPACING SHOWN BETWEEN SOME INSTALLATION SYSTEM COMPONENTS EXAGGERATED FOR CLARITY REFER TO ROUT & RETURN OVER PLYWOOD OR OSB SHEATHING INSTALLATION DETAILS FOR ANGLE CLIP AND PANEL STIFFENER LAYOUT & FASTENING REQUIREMENTS
2. OMEGA CI INSTALLATION COMPONENTS NOT SHOWN OR ANNOTATED FOR CLARITY



www.LaminatorsInc.com

800.523.2347

HORIZONTAL JOINT DETAIL (NFPA 285 ZONE)

ROUT & RETURN INSTALLATION SYSTEM  
OVER OMEGA CI

Date:  
12/3/2020

Drawn By:  
MJR / JJM

Detail Set:  
RR-OCI

Dwg. No.:  
S-1

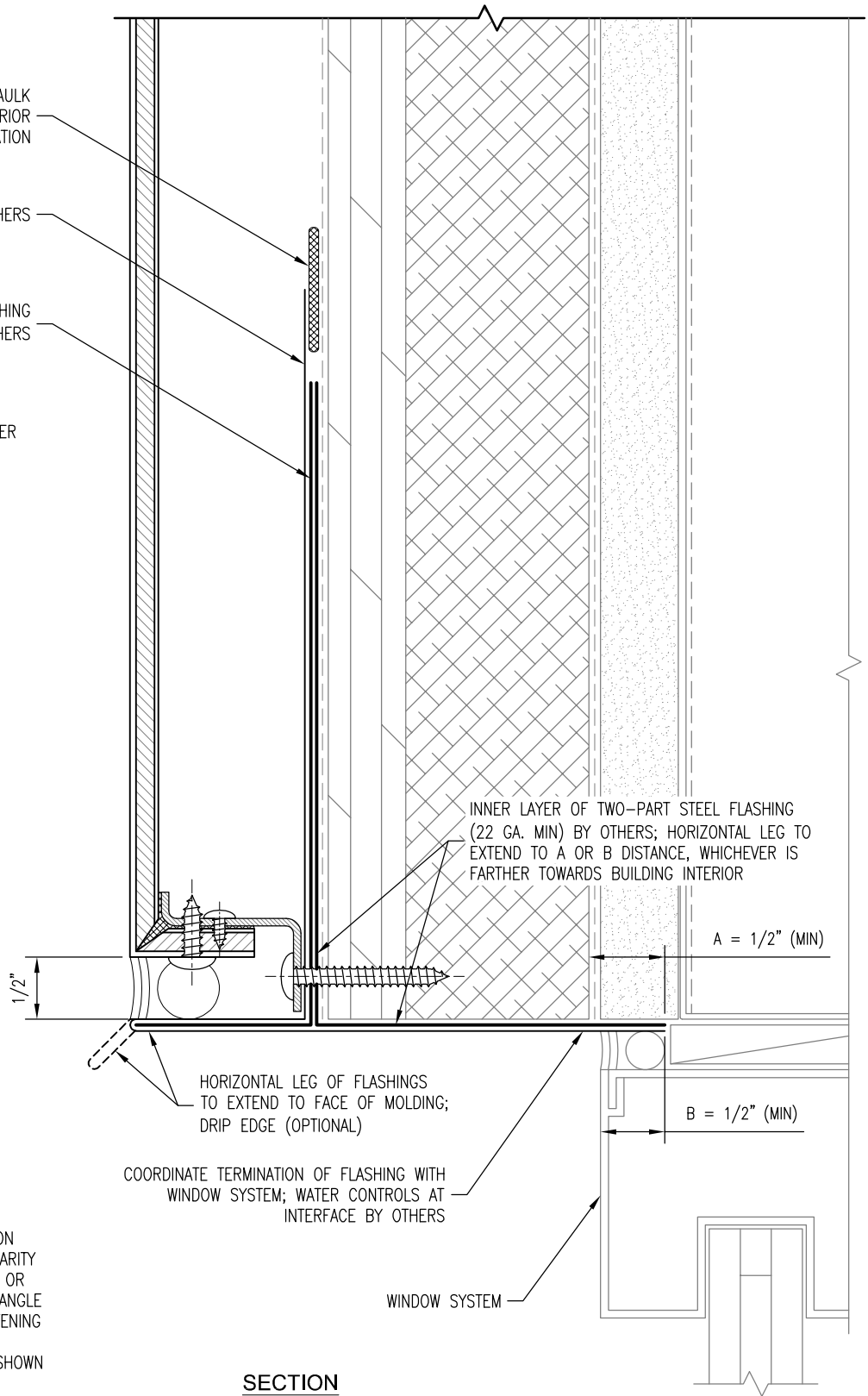
Rev:  
04

LAMINATORS APPROVED SILICONE CAULK  
APPLIED TO AIR AND WATER BARRIER PRIOR  
TO ALUMINUM FLASHING INSTALLATION

ALUMINUM FLASHING BY OTHERS

OUTER LAYER OF TWO-PART STEEL FLASHING  
(22 GA. MIN) BY OTHERS

NOTE: SEQUENCE INSTALLATION OF  
FLASHING LAYERS TO AVOID FASTENER  
HEAD INTERFERENCE



**DETAIL NOTES:**

1. SPACING SHOWN BETWEEN SOME INSTALLATION SYSTEM COMPONENTS EXAGGERATED FOR CLARITY
2. REFER TO ROUT & RETURN OVER PLYWOOD OR OSB SHEATHING INSTALLATION DETAILS FOR ANGLE CLIP AND PANEL STIFFENER LAYOUT & FASTENING REQUIREMENTS
3. OMEGA CI INSTALLATION COMPONENTS NOT SHOWN OR ANNOTATED FOR CLARITY
4. REFER TO S-1 FOR TYPICAL COMPONENTS NOT ANNOTATED

**SECTION**



www.LaminatorsInc.com

800.523.2347

WINDOW HEAD DETAIL (NFPA 285 ZONE)

ROUT & RETURN INSTALLATION SYSTEM  
OVER OMEGA CI

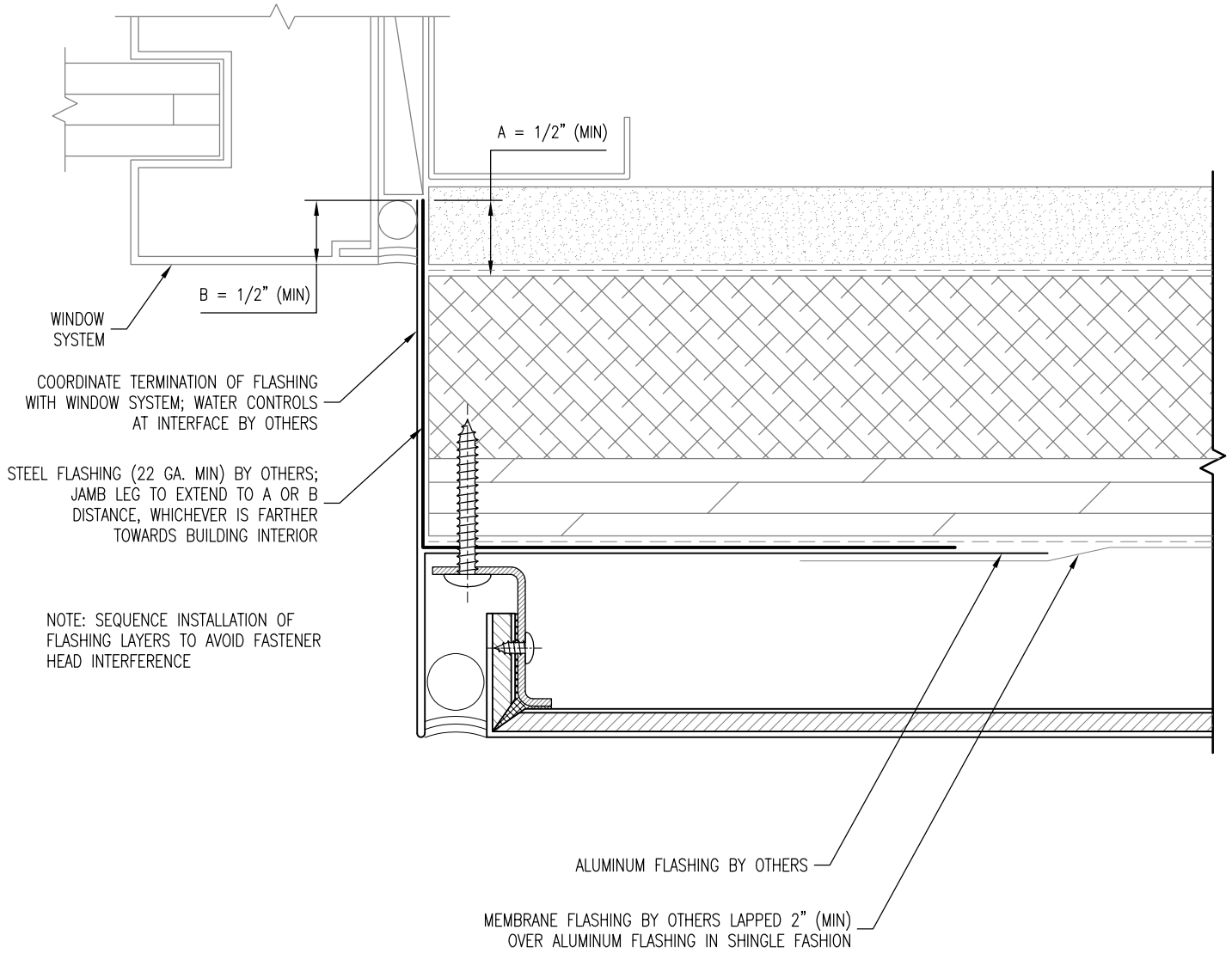
Date:  
1/15/2020

Drawn By:  
MJR / JJM

Detail Set:  
RR-OCI

Dwg. No.:  
S-2

Rev:  
01



**PLAN SECTION**

**DETAIL NOTES:**

1. SPACING SHOWN BETWEEN SOME INSTALLATION SYSTEM COMPONENTS EXAGGERATED FOR CLARITY
2. REFER TO ROUT & RETURN OVER PLYWOOD OR OSB SHEATHING INSTALLATION DETAILS FOR ANGLE CLIP AND PANEL STIFFENER LAYOUT & FASTENING REQUIREMENTS
3. OMEGA CI INSTALLATION COMPONENTS NOT SHOWN OR ANNOTATED FOR CLARITY
4. REFER TO S-1 FOR TYPICAL COMPONENTS NOT ANNOTATED



www.LaminatorsInc.com

800.523.2347

WINDOW JAMB DETAIL (NFPA 285 ZONE)

ROUT & RETURN INSTALLATION SYSTEM  
OVER OMEGA CI

Date:  
1/15/2020

Drawn By:  
MJR / JJM

Detail Set:  
RR-OCI

Dwg. No.:  
S-3

Rev:  
01