

IMPORTANT NOTICE

The following document is NOT comprehensive for design, bidding, or installation when used in isolation. Please refer to all related documents in their entirety for complete information regarding insulated glazing panels. Such documents include, but may not be limited to, Brochure, Architectural Color Chart, Technical Bulletins, Technical Data Sheets, CAD Drawings, Specifications, and Submittals. Visit LaminatorsInc.com for information on the latest documents regarding insulated glazing panels.

To consult directly with one of our Professional Engineers regarding our insulated glazing panels, contact Laminators Technical Support between the hours of 8:00am – 5:00pm EST:

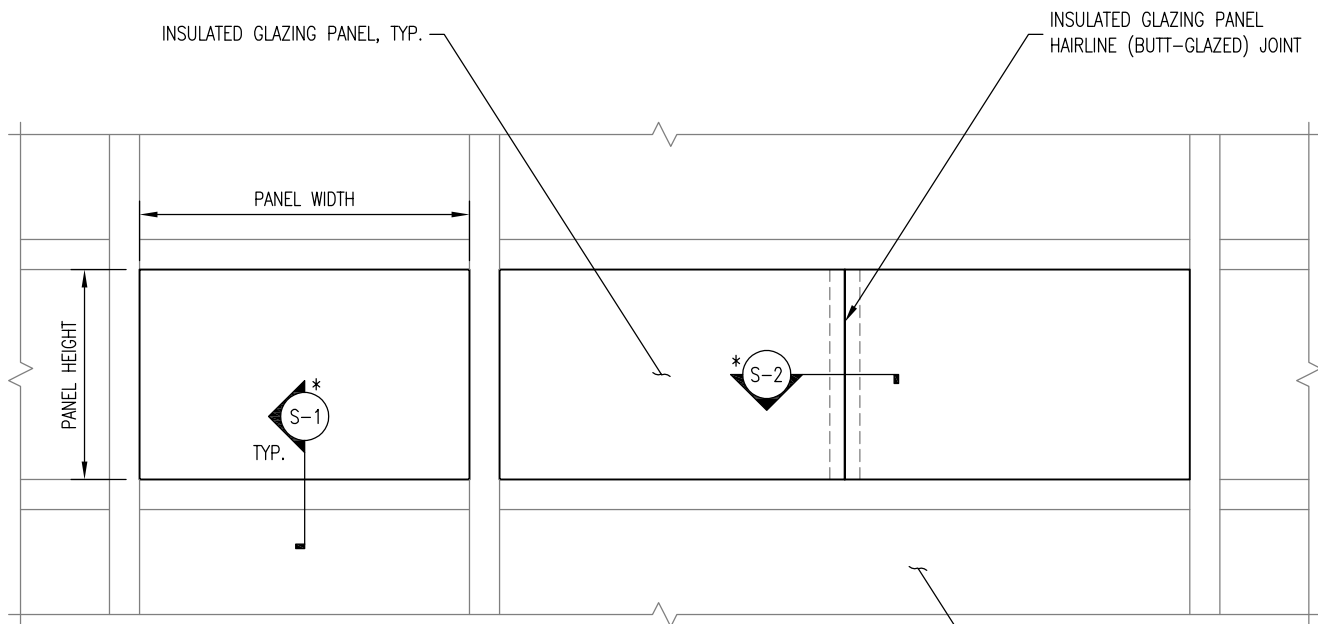
800.523.2347

LaminatorsInc.com

engineering@laminatorsinc.com

DRAWING INDEX – IGP-TL DETAIL SET (Rev 00, 07/16/2020)

DWG NO.	TITLE	REV DATE	REV	CHANGE FROM PREVIOUS REV
EL-1.0	Overall Panel Elevation	7/16/2020	00	
S-1.1	Thermolite Panel – Glazing Pocket Detail	7/16/2020	00	
S-1.2	Thermolite WE Panel – Glazing Pocket Detail	7/16/2020	00	
S-1.3	Thermolite SE Panel – Glazing Pocket Detail	7/16/2020	00	
S-1.4	Thermolite U-MAX Panel – Glazing Pocket Detail	7/16/2020	00	
S-2.1	Thermolite WE Panel – Hairline Joint Detail	7/16/2020	00	
S-2.2	Thermolite SE Panel – Hairline Joint Detail	7/16/2020	00	



OVERALL PANEL ELEVATION

* DENOTES SECTIONS REPRESENTING MULTIPLE PANEL TYPES (EX. S-1.1, S-1.2, ETC)

GLAZING OPENING (FENESTRATION), TYP.

GENERAL NOTES AND PANEL REQUIREMENTS:

1. THE THERMOLITE SERIES OF INSULATED GLAZING PANELS CONSISTS OF THE FOLLOWING PRODUCTS: THERMOLITE, THERMOLITE WE, THERMOLITE SE, AND THERMOLITE U-MAX
2. LAMINATORS INSULATED GLAZING PANELS ARE INTENDED FOR INSTALLATION INTO THIRD-PARTY WINDOW AND CURTAIN WALL SYSTEMS; LAMINATORS DOES NOT OFFER INSTALLATION SYSTEMS FOR INSULATED GLAZING PANELS
3. ALL STRUCTURAL, HYGROTHERMAL, AND FIRE PERFORMANCE REQUIREMENTS FOR THIRD-PARTY WINDOW AND CURTAIN WALL SYSTEMS ARE THE RESPONSIBILITY OF THE DESIGN PROFESSIONAL OF RECORD
4. UNLESS OTHERWISE NOTED, INSULATED GLAZING PANELS SHALL BE INSTALLED SUCH THAT ALL PANEL EDGES ARE FULLY ENCAPSULATED; ENCAPSULATION MUST RESTRAIN PANEL FROM MOVEMENT FORWARD, BACKWARD, OR SIDE-TO-SIDE WHILE ALLOWING FOR THERMAL MOVEMENT
5. AVAILABLE LOAD-CARRYING CAPACITIES FOR EACH INSULATED GLAZING PANEL TYPE ARE PROVIDED IN LAMINATORS TECHNICAL DATA SHEETS; PROJECT-SPECIFIC COMPONENTS AND CLADDING WIND LOADS (REQUIRED STRENGTH, R_q) SHALL NOT EXCEED AVAILABLE LOAD-CARRYING CAPACITIES (ALLOWABLE STRENGTH, R_n/Ω) FOR GIVEN SPANS



www.LaminatorsInc.com

800.523.2347

OVERALL PANEL ELEVATION

INSULATED GLAZING PANELS
THERMOLITE SERIES

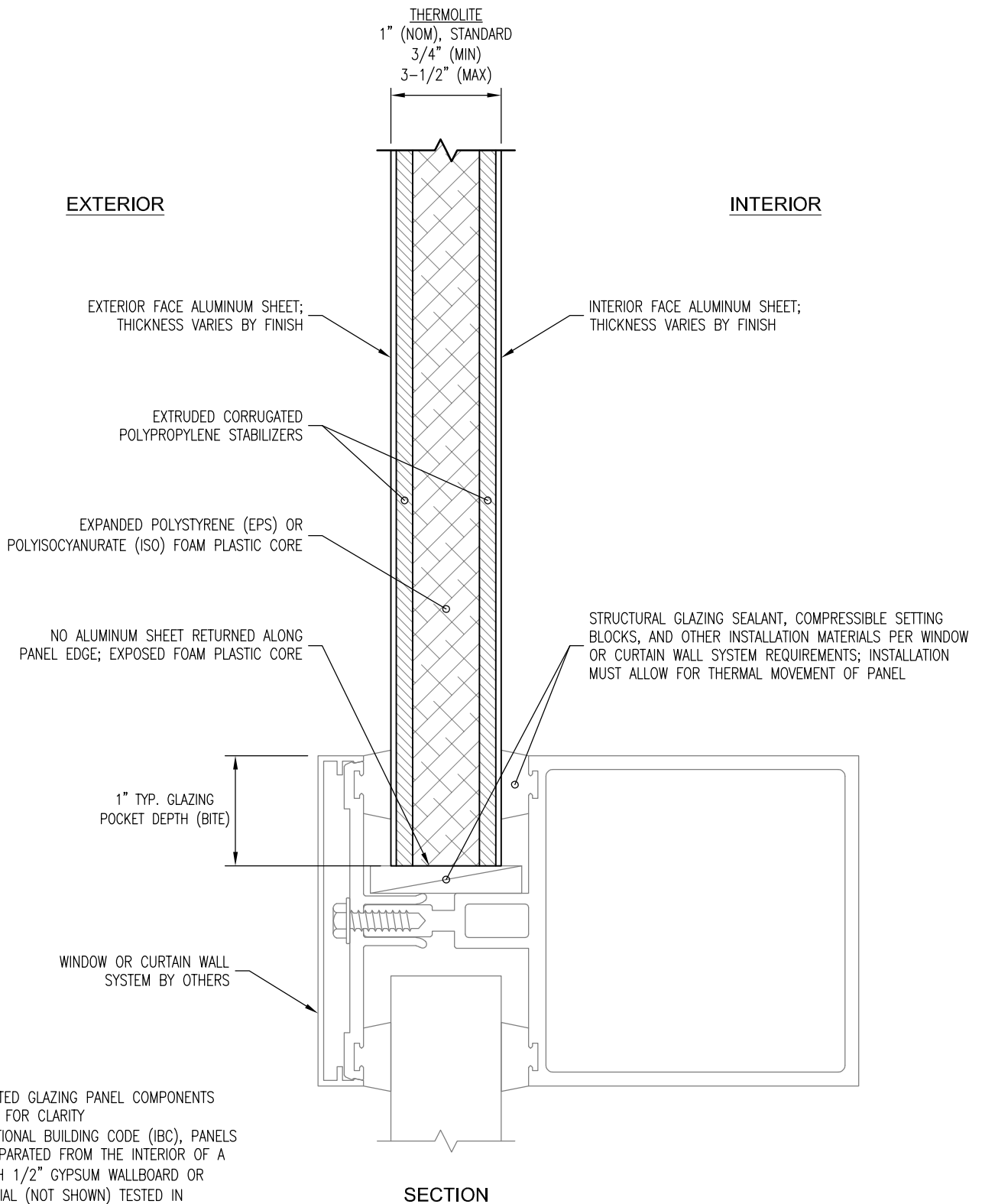
Date:
7/16/2020

Drawn By:
JJM

Detail Set:
IGP-TL

Dwg. No.:
EL-1.0

Rev:
00



DETAIL NOTES:

1. SOME INSULATED GLAZING PANEL COMPONENTS EXAGGERATED FOR CLARITY
2. PER INTERNATIONAL BUILDING CODE (IBC), PANELS SHALL BE SEPARATED FROM THE INTERIOR OF A BUILDING WITH 1/2" GYPSUM WALLBOARD OR OTHER MATERIAL (NOT SHOWN) TESTED IN ACCORDANCE WITH AND MEETING THE ACCEPTANCE CRITERIA OF NFPA 275

SECTION



www.LaminatorsInc.com

800.523.2347

THERMOLITE PANEL - GLAZING POCKET DETAIL

INSULATED GLAZING PANELS

THERMOLITE SERIES

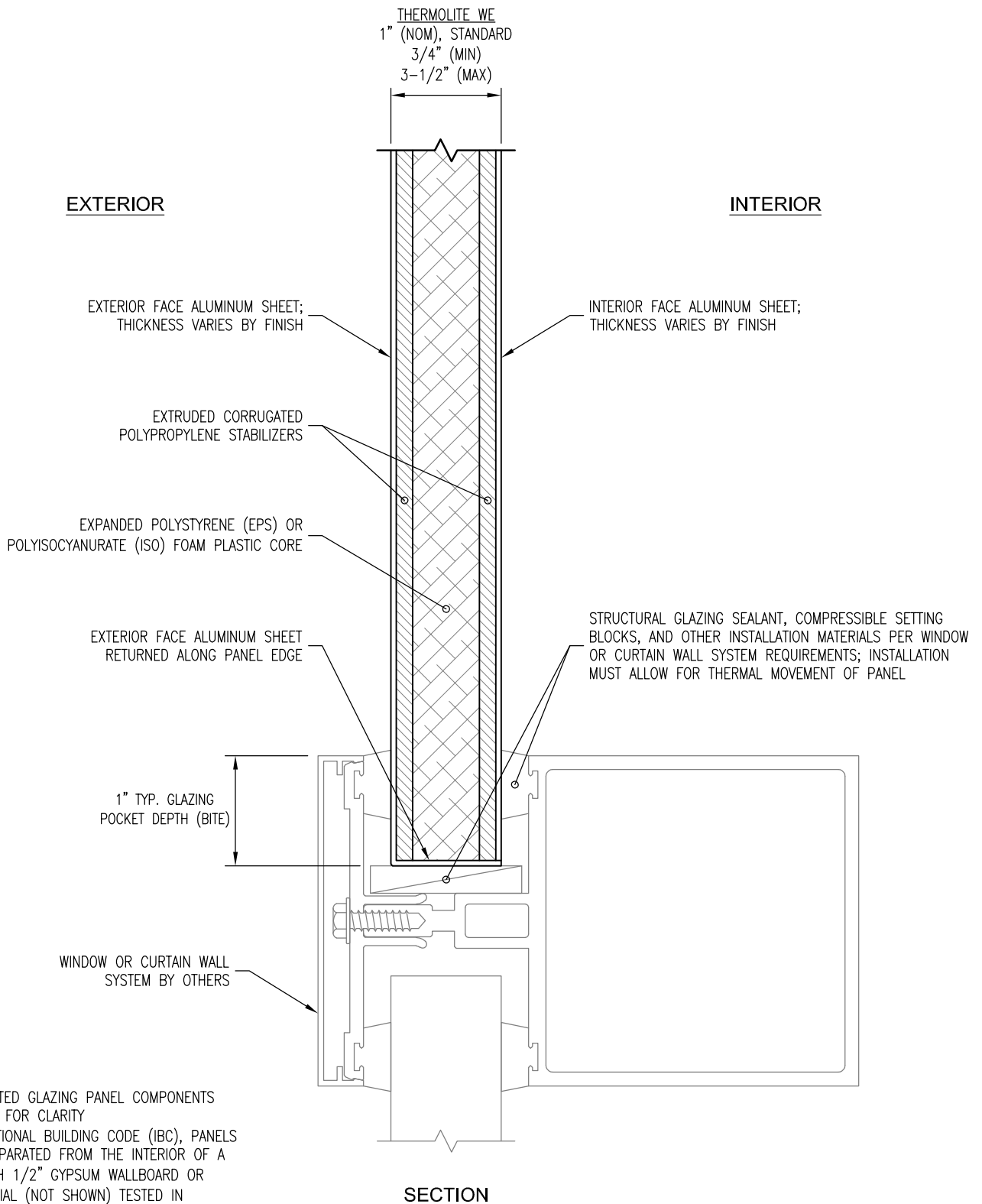
Date:
7/16/2020

Drawn By:
JJM

Detail Set:
IGP-TL

Dwg. No.:
S-1.1

Rev:
00



DETAIL NOTES:

1. SOME INSULATED GLAZING PANEL COMPONENTS EXAGGERATED FOR CLARITY
2. PER INTERNATIONAL BUILDING CODE (IBC), PANELS SHALL BE SEPARATED FROM THE INTERIOR OF A BUILDING WITH 1/2" GYPSUM WALLBOARD OR OTHER MATERIAL (NOT SHOWN) TESTED IN ACCORDANCE WITH AND MEETING THE ACCEPTANCE CRITERIA OF NFPA 275

SECTION



www.LaminatorsInc.com

800.523.2347

THERMOLITE WE PANEL - GLAZING POCKET DETAIL

INSULATED GLAZING PANEL

THERMOLITE SERIES

Date:
7/16/2020

Drawn By:
JJM

Detail Set:
IGP-TL

Dwg. No.:
S-1.2

Rev:
00

THERMOLITE SE
2" (NOM), STANDARD

OMEGA-LITE STEPPED EDGE PANEL 1" (NOM), STANDARD	THERMOLITE 1" (NOM), STANDARD 3/4" (MIN) 2-1/2" (MAX)
--	---

EXTERIOR

INTERIOR

EXTERIOR FACE (OMEGA-LITE) ALUMINUM SHEET;
THICKNESS VARIES BY FINISH

INTERIOR FACE (THERMOLITE) ALUMINUM SHEET;
THICKNESS VARIES BY FINISH

UNSEEN FACE ALUMINUM SHEETS;
MILL FINISH ONLY

EXPANDED POLYSTYRENE (EPS) OR
POLYISOCYANURATE (ISO) FOAM PLASTIC CORE (THERMOLITE)

EXTRUDED CORRUGATED POLYPROPYLENE
CORE (OMEGA-LITE)

EXTRUDED CORRUGATED
POLYPROPYLENE STABILIZERS
(THERMOLITE)

SHOP-APPLIED FABRICATION SEALANT

STRUCTURAL GLAZING SEALANT, COMPRESSIBLE SETTING
BLOCKS, AND OTHER INSTALLATION MATERIALS PER WINDOW
OR CURTAIN WALL SYSTEM REQUIREMENTS; INSTALLATION
MUST ALLOW FOR THERMAL MOVEMENT OF PANEL

OFFSET GAP

NO ALUMINUM SHEET RETURNED ALONG PANEL EDGE;
EXPOSED FOAM PLASTIC CORE

1" TYP. GLAZING
POCKET DEPTH (BITE)

WINDOW OR CURTAIN WALL
SYSTEM BY OTHERS

SECTION

DETAIL NOTES:

1. SOME INSULATED GLAZING PANEL COMPONENTS EXAGGERATED FOR CLARITY
2. PER INTERNATIONAL BUILDING CODE (IBC), PANELS SHALL BE SEPARATED FROM THE INTERIOR OF A BUILDING WITH 1/2" GYPSUM WALLBOARD OR OTHER MATERIAL (NOT SHOWN) TESTED IN ACCORDANCE WITH AND MEETING THE ACCEPTANCE CRITERIA OF NFPA 275



www.LaminatorsInc.com

800.523.2347

THERMOLITE SE PANEL - GLAZING POCKET DETAIL

INSULATED GLAZING PANELS

THERMOLITE SERIES

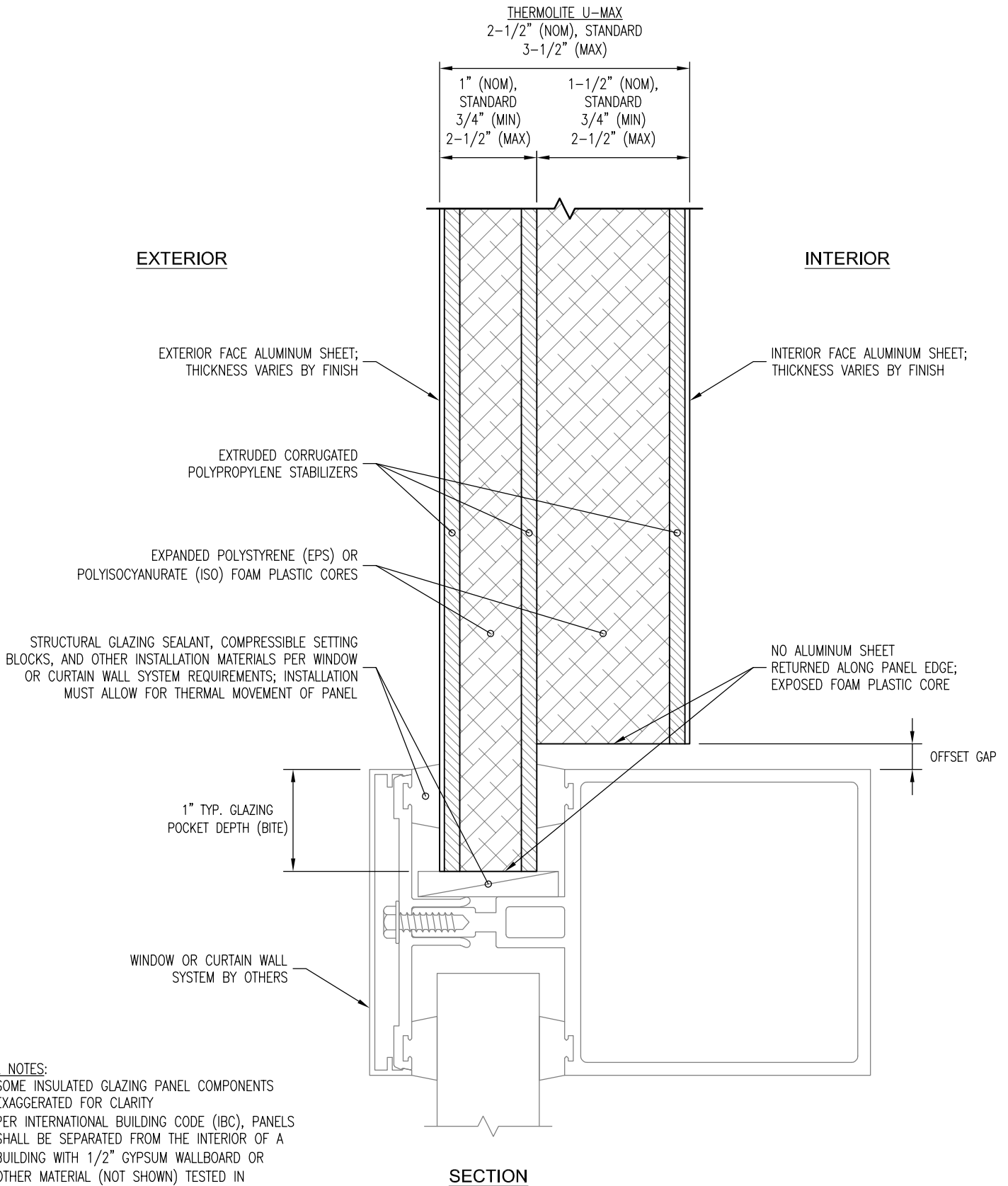
Date:
7/16/2020

Drawn By:
JJM

Detail Set:
IGP-TL

Dwg. No.:
S-1.3

Rev:
00



DETAIL NOTES:

1. SOME INSULATED GLAZING PANEL COMPONENTS EXAGGERATED FOR CLARITY
2. PER INTERNATIONAL BUILDING CODE (IBC), PANELS SHALL BE SEPARATED FROM THE INTERIOR OF A BUILDING WITH 1/2" GYPSUM WALLBOARD OR OTHER MATERIAL (NOT SHOWN) TESTED IN ACCORDANCE WITH AND MEETING THE ACCEPTANCE CRITERIA OF NFPA 275



www.LaminatorsInc.com

800.523.2347

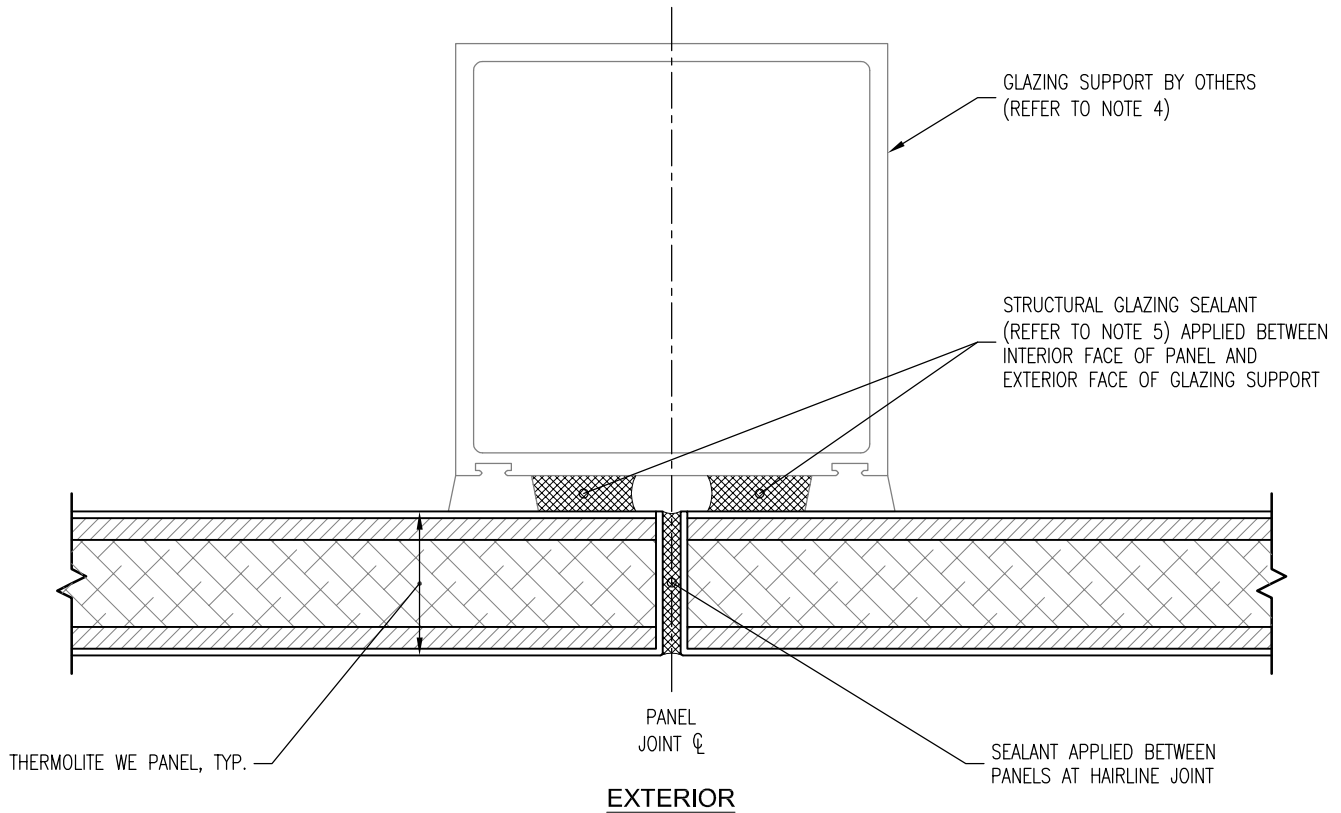
THERMOLITE U-MAX PANEL - GLAZING POCKET DETAIL

INSULATED GLAZING PANELS

THERMOLITE SERIES

Date: 7/16/2020	Drawn By: JJM	Detail Set: IGP-TL	Dwg. No.: S-1.4	Rev: 00
--------------------	------------------	-----------------------	--------------------	------------

INTERIOR



EXTERIOR

PLAN SECTION

DETAIL NOTES:

1. SOME INSULATED GLAZING PANEL COMPONENTS EXAGGERATED FOR CLARITY
2. PER INTERNATIONAL BUILDING CODE (IBC), PANELS SHALL BE SEPARATED FROM THE INTERIOR OF A BUILDING WITH 1/2" GYPSUM WALLBOARD OR OTHER MATERIAL (NOT SHOWN) TESTED IN ACCORDANCE WITH AND MEETING THE ACCEPTANCE CRITERIA OF NFPA 275
3. HAIRLINE (BUTT-GLAZED) JOINTS ONLY PERMITTED ALONG THE HEIGHT (SHORT DIMENSION) OF PANELS WITH A WIDTH:HEIGHT ASPECT RATIO OF 2:1 OR GREATER; CONTACT LAMINATORS TECHNICAL SUPPORT FOR PROJECT-SPECIFIC EXCEPTIONS AND ADDITIONAL FABRICATION CAPABILITIES
4. DESIGN OF GLAZING SUPPORT FOR HAIRLINE JOINT TO BE BASED ON PROJECT-SPECIFIC COMPONENTS AND CLADDING WIND LOADS AS DETERMINED BY THE DESIGN PROFESSIONAL OF RECORD
5. SELECTION OF STRUCTURAL GLAZING SILICONE SEALANT TO BE BASED ON PROJECT REQUIREMENTS, INCLUDING (BUT NOT LIMITED TO) THE FOLLOWING:
 - A. STRENGTH CAPABILITIES TO PROVIDE FULL TRANSFER OF PROJECT-SPECIFIC LOADS TO GLAZING SUPPORT
 - B. ELONGATION AND COMPRESSIBILITY CAPABILITIES TO ACCOMMODATE ANTICIPATED THERMAL MOVEMENT AND MOVEMENT FROM WIND LOAD CYCLES



www.LaminatorsInc.com

800.523.2347

THERMOLITE WE PANEL - HAIRLINE JOINT DETAIL

INSULATED GLAZING PANELS

THERMOLITE SERIES

Date:
7/16/2020

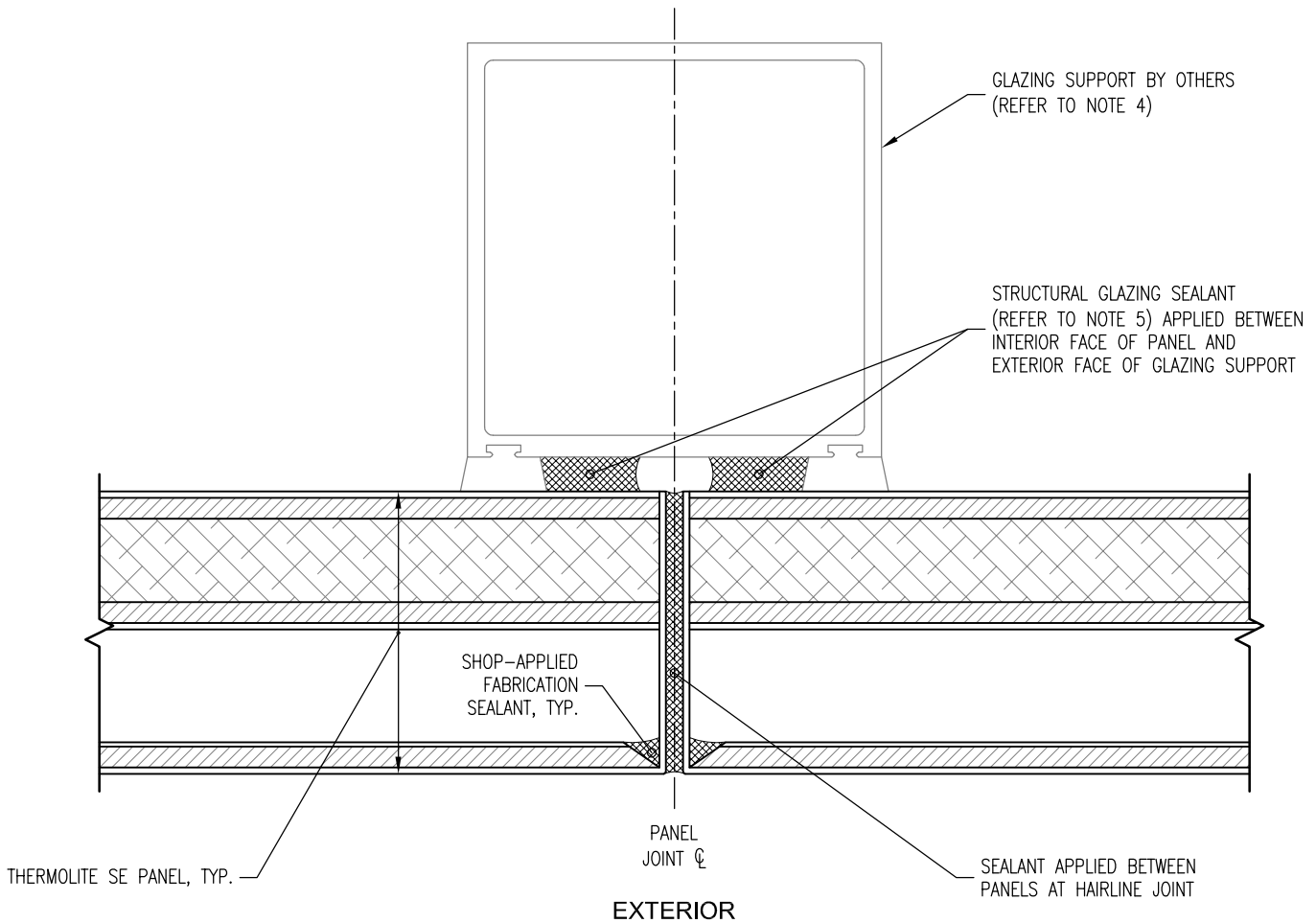
Drawn By:
JJM

Detail Set:
IGP-TL

Dwg. No.:
S-2.1

Rev:
00

INTERIOR



PLAN SECTION

DETAIL NOTES:

1. SOME INSULATED GLAZING PANEL COMPONENTS EXAGGERATED FOR CLARITY
2. PER INTERNATIONAL BUILDING CODE (IBC), PANELS SHALL BE SEPARATED FROM THE INTERIOR OF A BUILDING WITH 1/2" GYPSUM WALLBOARD OR OTHER MATERIAL (NOT SHOWN) TESTED IN ACCORDANCE WITH AND MEETING THE ACCEPTANCE CRITERIA OF NFPA 275
3. HAIRLINE (BUTT-GLAZED) JOINTS ONLY PERMITTED ALONG THE HEIGHT (SHORT DIMENSION) OF PANELS WITH A WIDTH:HEIGHT ASPECT RATIO OF 2:1 OR GREATER; CONTACT LAMINATORS TECHNICAL SUPPORT FOR PROJECT-SPECIFIC EXCEPTIONS AND ADDITIONAL FABRICATION CAPABILITIES
4. DESIGN OF GLAZING SUPPORT FOR HAIRLINE JOINT TO BE BASED ON PROJECT-SPECIFIC COMPONENTS AND CLADDING WIND LOADS AS DETERMINED BY THE DESIGN PROFESSIONAL OF RECORD
5. SELECTION OF STRUCTURAL GLAZING SILICONE SEALANT TO BE BASED ON PROJECT REQUIREMENTS, INCLUDING (BUT NOT LIMITED TO) THE FOLLOWING:
 - A. STRENGTH CAPABILITIES TO PROVIDE FULL TRANSFER OF PROJECT-SPECIFIC LOADS TO GLAZING SUPPORT
 - B. ELONGATION AND COMPRESSIBILITY CAPABILITIES TO ACCOMMODATE ANTICIPATED THERMAL MOVEMENT AND MOVEMENT FROM WIND LOAD CYCLES



www.LaminatorsInc.com

800.523.2347

THERMOLITE SE PANEL - HAIRLINE JOINT DETAIL

INSULATED GLAZING PANELS

THERMOLITE SERIES

Date:
7/16/2020

Drawn By:
JJM

Detail Set:
IGP-TL

Dwg. No.:
S-2.2

Rev:
00