

IMPORTANT NOTICE

The following document is NOT comprehensive for design, bidding, or installation when used in isolation. Please refer to all related documents in their entirety for complete information regarding this ACM panel system. Such documents include, but may not be limited to, Technical Guides, Architectural Color Chart, Approved Materials List, Systems Guides, Technical Bulletins, Technical Data Sheets, CAD Drawings, Specifications, and Submittals. Visit LaminatorsInc.com for information on the latest documents regarding this panel system.

To consult directly with one of our Professional Engineers regarding our ACM panel systems, contact Laminators Technical Support between the hours of 8:00am – 5:00pm EST:

800.523.2347

LaminatorsInc.com

engineering@laminatorsinc.com

INSTRUCTIONS FOR NFPA 285 COMPLIANCE

With respect to fire performance, note the following when detailing the 1-Piece, Tight-Fit Molding Installation System with Back Drained & Ventilated (BD&V) Sub-Framing over Omega CI rigid insulation panels:

1. The following document represents the referenced system as it has been designed, detailed, and tested and its relationship with a typical exterior wall assembly. As such, the document may be considered a baseline for the system and appropriately applied to project-specific conditions.
 - a. The following document includes a partial elevation that outlines the NFPA 285 Zone and related dimensions, notes, and sections. In order to maintain NFPA 285 compliance, refer to the specialized detailing required in the NFPA 285 Zone and at window heads and jambs.
2. Through the use of a specific Engineering Evaluation (EEV) available from Laminators, engineering extensions may be made (in lieu of what has been tested) with respect to base wall framing, fire-stopping at floor lines, cavity insulation, and water-resistive barrier (WRB) components while maintaining NFPA 285 compliance. The EEV may be required for submission to the Authority Having Jurisdiction (AHJ) to support the extensions.
3. If one or more engineering extensions are required beyond what is provided in the EEV available from Laminators, it is the responsibility of a third-party to pursue obtaining a separate EEV that adequately addresses each intended substitution. Note that Laminators cannot serve as the third-party in efforts to obtain such an EEV.

Note that the application of any engineering extension for NFPA 285 compliance will need to be evaluated by the Design Professional of Record (DPR) with respect to potential impact on any air, structural, and water performance of the project-specific exterior wall assembly. It is possible that components substituted to achieve fire testing compliance will affect the assembly differently with respect to air, structural, and water performance and need to be coordinated.

If the 1-Piece, Tight-Fit Molding Installation System with Back Drained & Ventilated (BD&V) Sub-Framing is intended to be installed over a different substrate (e.g. gypsum (non-structural) sheathing, CMU, or concrete), please defer to the appropriate detail set.

Note that the following detail set is also applicable for installations over fire-retardant-treated wood (FRTW) structural sheathing (panels) in order to achieve NFPA 285 compliance (in Type III construction only).

DRAWING INDEX – 1P-BDV-OCI DETAIL SET (Rev 07, 03/18/2022)

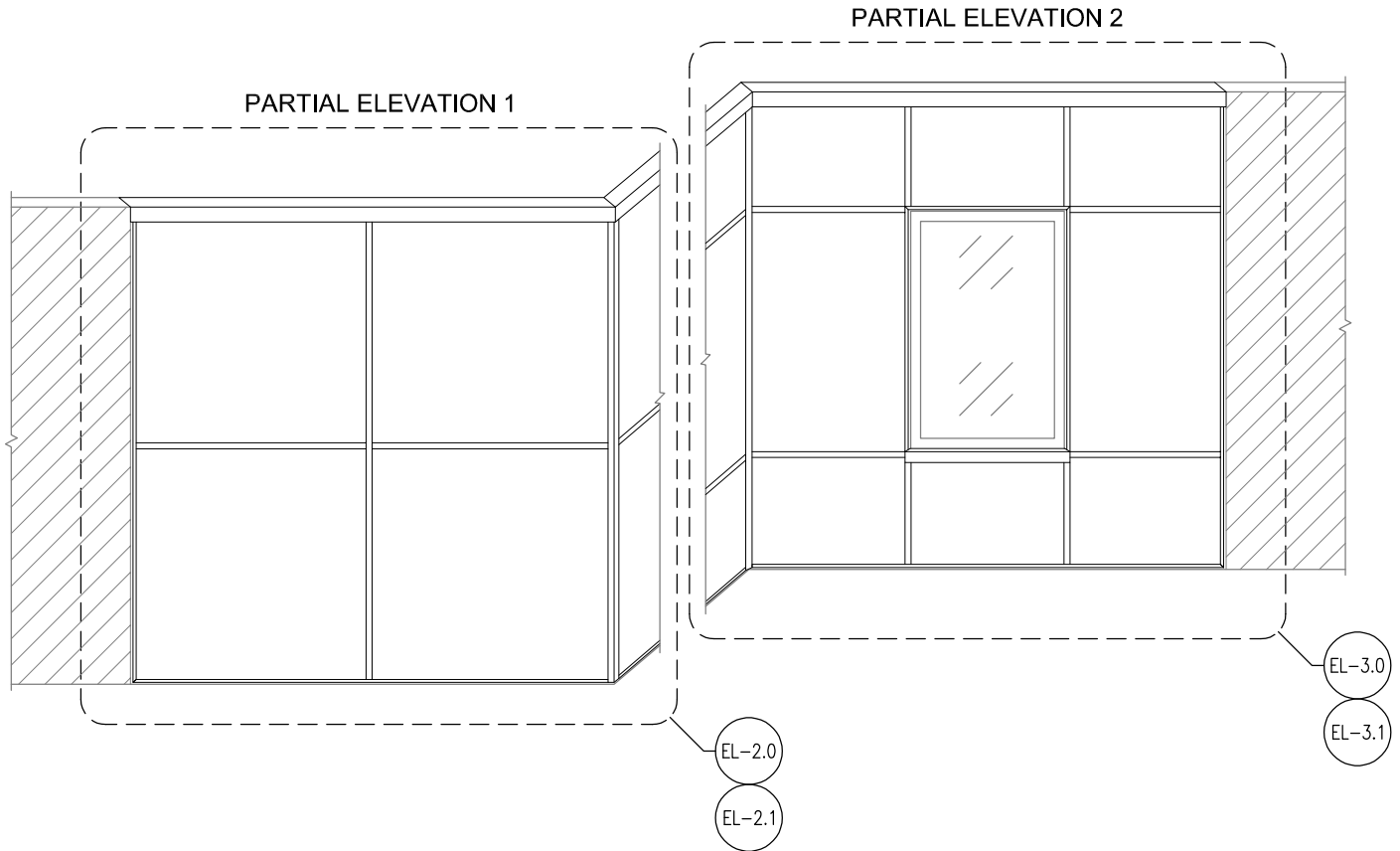
DWG NO.	TITLE	REV DATE	REV	CHANGE FROM PREVIOUS REV
EL-1.0	Overall Panel System Elevation	4/1/2020	04	
EL-2.0	BD&V Sub-Framing Layout (Partial Elevation 1)	3/18/2022	03	RH member removed
EL-2.1	System Component Layout (Partial Elevation 1)	1/24/2020	02	
EL-3.0	BD&V Sub-Framing Layout (Partial Elevation 2)	3/18/2022	03	RH member removed
EL-3.1	System Component Layout (Partial Elevation 2)	1/24/2020	02	
EL-4.0	NFPA 285 Compliance Detailing Requirements	6/12/2019	01	
S-1.1	Joint Detail	1/24/2020	01	
S-1.2	Joint Detail (Reveal H-Molding)	3/18/2022	02	RH member removed
S-2	Intermediate Panel Support Detail	1/24/2020	01	
S-3.1	Left Vertical Edge Detail (Adjacent to New)	1/24/2020	01	
S-3.2	Left Vertical Edge Detail (Adjacent to Existing)	1/24/2020	01	
S-4.1	Top of Wall Detail	1/24/2020	01	
S-4.2	Top of Wall Detail w/ Termination Z-Molding	1/24/2020	01	
S-5	Base of Wall Detail	1/24/2020	01	
S-6.1	Outside Corner Detail (Molding Option)	1/24/2020	01	
S-6.2	Outside Corner Detail (Fabricated Option)	3/10/2020	02	
S-7.1	Inside Corner Detail (Molding Option)	1/24/2020	01	
S-7.2	Inside Corner Detail (Fabricated Option)	3/10/2020	02	
S-8	Window Head Detail (NFPA 285 Zone)	1/24/2020	01	
S-9.1	Window Sill Detail	1/24/2020	01	
S-9.2	Window Sill Detail w/ Termination Z-Molding	1/24/2020	01	
S-10.1	Window Jamb Detail (NFPA 285 Zone)	1/26/2021	02	
S-10.2	Window Jamb Detail w/ Term Z-Molding (NFPA 285 Zone)	1/26/2021	02	
S-11.1	Right Vertical Edge Detail (Adjacent to New)	1/24/2020	01	
S-11.2	Right Vertical Edge Detail w/ Term Z (Adj. to New)	1/24/2020	01	

DWG NO.	TITLE	REV DATE	REV	CHANGE FROM PREVIOUS REV
S-11.3	Right Vertical Edge Detail (Adjacent to Existing)	1/24/2020	01	
S-11.4	Right Vertical Edge Detail w/ Term Z (Adj. to Existing)	1/24/2020	01	
S-12.1	Fascia-to-Soffit Transition Detail (Molding Option)	1/24/2020	01	
S-12.2	Fascia-to-Soffit Transition Detail (Fabricated Option)	3/10/2020	02	
S-13.1	Soffit-to-Wall Transition Detail (Molding Option)	1/24/2020	01	
S-13.2	Soffit-to-Wall Transition Detail (Term Z-Molding)	1/24/2020	01	
S-13.3	Soffit-to-Wall Transition Detail (Fabricated Option)	3/10/2020	02	
M-1	Panel Sizing Guidelines	10/14/2019	01	
M-2	Soffit Vent Installation Requirements	5/1/2019	00	
M-3	BD&V Sub-Framing Member Profiles	3/18/2022	01	RH member removed
M-4	Molding Profiles	10/14/2019	01	
M-5.1	Panel Back Venting Requirements (NFPA 285) - 1 of 2	6/12/2019	00	
M-5.2	Panel Back Venting Requirements (NFPA 285) - 2 of 2	6/12/2019	00	

FIRE PERFORMANCE

THE WALL ASSEMBLY DETAILED HEREIN, COMPRISED OF LAMINATORS' BACK-DRAINED AND VENTILATED (BD&V) ACM PANEL SYSTEM AND OMEGA CI RIGID INSULATION PANELS, PROVIDES THE FOLLOWING FIRE PERFORMANCE:

- NFPA 285 COMPLIANCE
- 1-HOUR FIRE RATING PER ANSI/UL 263 DESIGN NO. V454



OVERALL PANEL SYSTEM ELEVATION

IMPORTANT NOTICE

SYSTEM INSTALLATION NOTES:

1. REFER TO EL-2.0 & EL-3.0 FOR BD&V SUB-FRAMING LAYOUTS
2. REFER TO EL-2.1 & EL-3.1 FOR SYSTEM COMPONENT LAYOUTS
3. REFER TO S-12.1, S-12.2, S-13.1, S-13.2, & S-13.3 FOR SOFFIT DETAILS NOT REFERENCED FROM OVERALL PANEL SYSTEM ELEVATION
4. REFER TO M-1 FOR PANEL SIZING GUIDELINES
5. REFER TO M-3 FOR BD&V SUB-FRAMING MEMBER PROFILES
6. REFER TO M-4 FOR MOLDING PROFILES
7. REFER TO EL-2.0 FOR BD&V SUB-FRAMING LAYOUT TO BE USED FOR TYPICAL SOFFIT CONDITIONS

PROJECT-SPECIFIC COMPONENTS AND CLADDING WIND LOADS (REQUIRED STRENGTH, R_o) SHALL NOT EXCEED AVAILABLE LOAD-CARRYING CAPACITY OF SYSTEM (ALLOWABLE STRENGTH, R_n/Ω)

- A. PROJECT-SPECIFIC COMPONENTS AND CLADDING WIND LOADS (REFERRED TO AS WIND LOADS IN EL-2.0, 2.1, 3.0, & 3.1) ARE TO BE DETERMINED BY THE DESIGN PROFESSIONAL OF RECORD
- B. AVAILABLE LOAD-CARRYING CAPACITY OF SYSTEM (UP TO 60 PSF) IS BASED ON ALLOWABLE STRENGTH DESIGN (ASD) METHOD
- C. FOR PROJECT-SPECIFIC COMPONENTS AND CLADDING WIND LOADS GREATER THAN 60 PSF, CONTACT LAMINATORS TECHNICAL SUPPORT FOR PROJECT-SPECIFIC DETAILING REQUIREMENTS



www.LaminatorsInc.com

800.523.2347

OVERALL PANEL SYSTEM ELEVATION

1-PIECE, TIGHT-FIT MOLDING INSTALLATION SYSTEM
WITH BD&V SUB-FRAMING OVER OMEGA CI

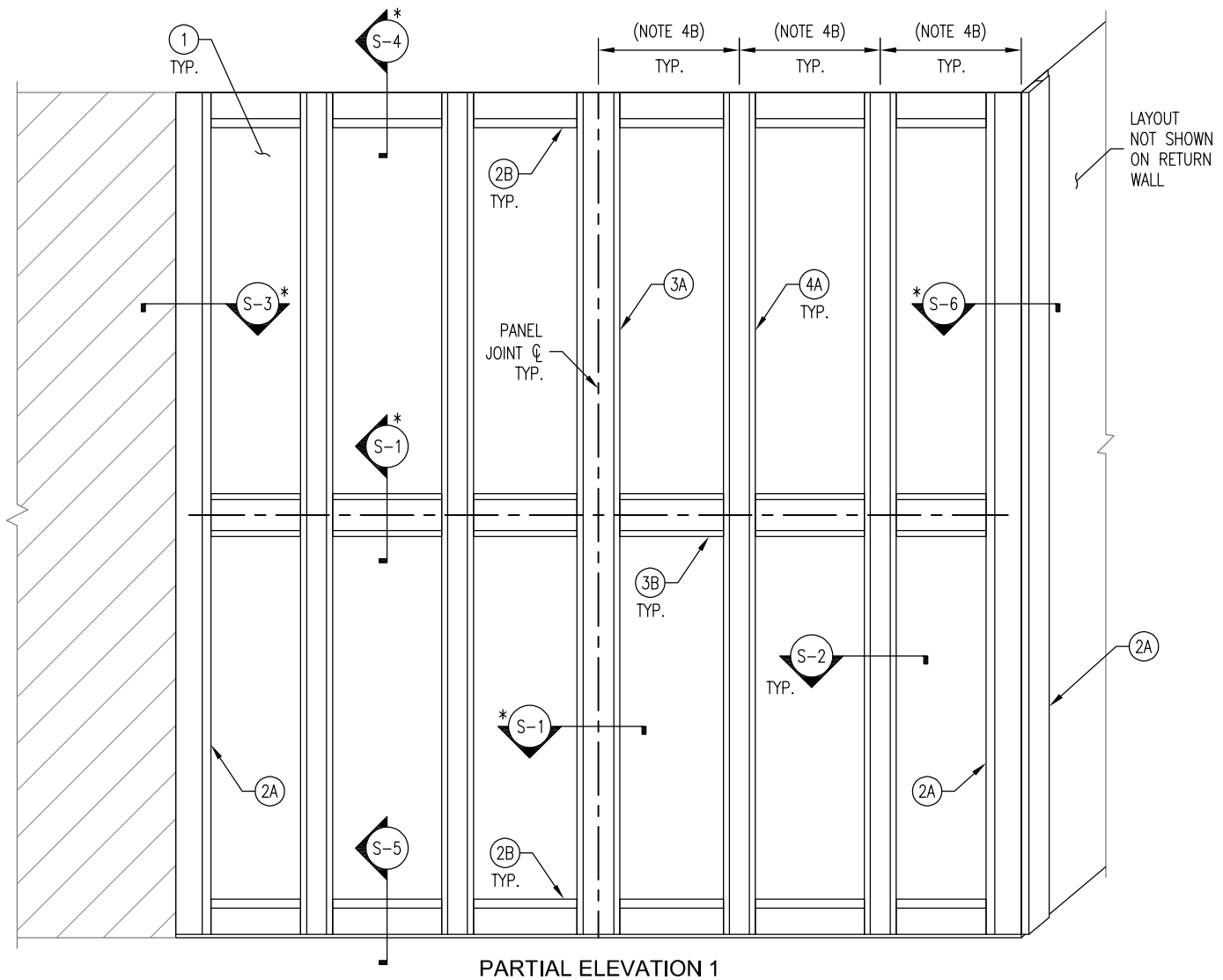
Date:
4/1/2020

Drawn By:
JJM

Detail Set:
1P-BDV-OCI

Dwg. No.:
EL-1.0

Rev:
04



PARTIAL ELEVATION 1

NOTES:

* DENOTES SECTIONS WITH AT LEAST (2) CONFIGURATIONS AVAILABLE (EX. S-1.1, S-1.2, ETC)

- ① OMEGA CI RIGID INSULATION PANELS W/ AIR AND WATER BARRIER (AWB)
 - TYPE OF VAPOR PERMEABLE AWB TO BE SELECTED BY DESIGN PROFESSIONAL OF RECORD
 - REFER TO OMEGA CI DETAILS FOR INSTALLATION REQUIREMENTS

- ② EJ SUB-FRAMING MEMBERS (PART NO. 48BDV-EJ)
 - A. VERTICAL EJ MEMBERS INSTALLED ALONG LEFT VERTICAL EDGE AND OUTSIDE CORNER
 - B. HORIZONTAL EJ MEMBERS INSTALLED BETWEEN FLANGES OF VERTICAL MEMBERS AT TOP AND BASE OF WALL

- ③ SH SUB-FRAMING MEMBERS (PART NO. 48BDV-SH)
 - A. VERTICAL SH MEMBER INSTALLED ALONG CENTERLINE OF VERTICAL PANEL JOINT
 - B. HORIZONTAL SH MEMBERS INSTALLED BETWEEN FLANGES OF VERTICAL MEMBERS ALONG CENTERLINE OF HORIZONTAL PANEL JOINT

- ④ AH SUB-FRAMING MEMBERS (PART NO. 48BDV-AH)
 - A. VERTICAL AH MEMBERS INSTALLED AS INTERMEDIATE PANEL SUPPORTS
 - B. SPACING OF AH MEMBERS TO BE BASED ON WIND LOADS:
 - i. UP TO 40 PSF (ASD): 24" O.C. (MAX)
 - ii. GREATER THAN 40 PSF (ASD), UP TO 60 PSF (ASD): 16" O.C. (MAX)

BD&V SUB-FRAMING MEMBER FASTENING REQUIREMENTS (BASED ON WIND LOADS):

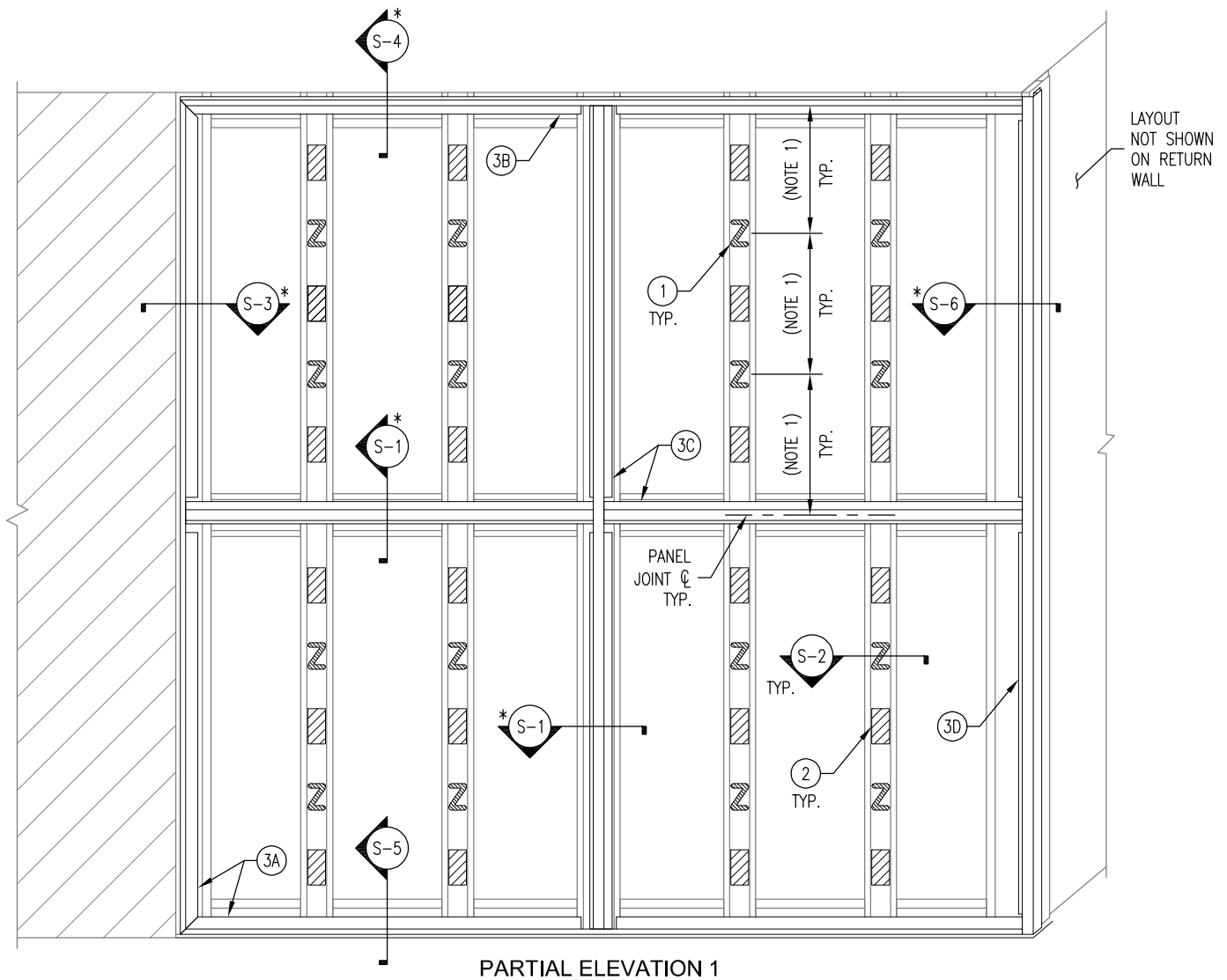
- UP TO 60 PSF (ASD): FASTEN TO OMEGA CI USING #10 X 1-1/2" HEX WASHER HEAD SELF-DRILLING SCREWS (PART NO. 48BDV-FASTENER-OCI/STEEL)
 - EJ MEMBERS:
 - VERTICAL: (1) SCREW AT 16" (MAX)
 - HORIZONTAL: (1) SCREW LOCATED 2" FROM EACH END (2 TOTAL)
 - SH/RH MEMBERS:
 - VERTICAL: (2) SCREWS AT 16" O.C. (MAX); ONE SCREW PER FLANGE
 - HORIZONTAL: (2) SCREWS LOCATED 2" FROM EACH END (4 TOTAL)
 - AH MEMBERS:
 - VERTICAL: (2) SCREWS AT 16" O.C. (MAX); ONE SCREW PER FLANGE



BD&V SUB-FRAMING LAYOUT (PARTIAL ELEVATION 1)

1-PIECE, TIGHT-FIT MOLDING INSTALLATION SYSTEM WITH BD&V SUB-FRAMING OVER OMEGA CI

Date: 3/18/2022	Drawn By: JJM	Detail Set: 1P-BDV-OCI	Dwg. No.: EL-2.0	Rev: 03
--------------------	------------------	---------------------------	---------------------	------------



PARTIAL ELEVATION 1

NOTES:

- * DENOTES SECTIONS WITH AT LEAST (2) CONFIGURATIONS AVAILABLE (EX. S-1.1, S-1.2, ETC)
- ① 1/4" (MIN) TO 3/8" (MAX) BEAD OF LAMINATORS APPROVED PANEL ADHESIVE APPLIED TO FACE OF AH SUB-FRAMING MEMBERS IN 2" X 3" Z-FORMATION; SPACING OF ADHESIVE LOCATIONS TO BE BASED ON WIND LOADS:
 - UP TO 60 PSF (ASD): 16" O.C. VERTICALLY (MAX) WITHIN FIELD OF PANEL
- ② 4" LONG STRIPS OF FOAM TAPE (PART NO. 12847) APPLIED TO FACE OF AH SUB-FRAMING MEMBERS CENTERED BETWEEN ADHESIVE LOCATIONS AND MOLDINGS
- ③ MOLDING LAYOUT SHOWN FOR PANEL INSTALLATION WITH VERTICAL PASS-THROUGH JOINTS; REFER TO SYSTEM GUIDE FOR MOLDING INTERSECTION OPTIONS, NOTCHING PROCEDURES, AND SEQUENCING:
 - A. J-MOLDING (PART NO. 4515X) INSTALLED ALONG BASE OF WALL AND LEFT VERTICAL EDGE
 - B. TERMINATION J-MOLDING (PART NO. 4565X) INSTALLED ALONG TOP OF WALL
 - C. H-MOLDINGS (PART NO. 4505X) OR REVEAL H-MOLDINGS (PART NO. 4595X) INSTALLED ALONG HORIZONTAL AND VERTICAL PANEL JOINTS (H-MOLDINGS SHOWN)
 - D. OUTSIDE CORNER MOLDING (PART NO. 4535X) INSTALLED ALONG OUTSIDE CORNER

MOLDING FASTENING REQUIREMENTS (BASED ON WIND LOADS):

- UP TO 60 PSF (ASD): FASTEN MOLDINGS TO FACE OF SUB-FRAMING MEMBERS USING (1) #8 X 1/2" PHILLIPS MODIFIED TRUSS HEAD SELF-DRILLING SCREW (PART NO. 48BDV-FASTENER-MOLDING) AT 12" O.C. (MAX)
 - NOTE: PHILLIPS PAN HEAD SELF-DRILLING SCREWS (PART NO. 48BDV-FASTENER-C&C) TO BE USED FOR FASTENING OF TERMINATION J- AND Z-MOLDINGS



LAMINATORS
Composite Panel Solutions

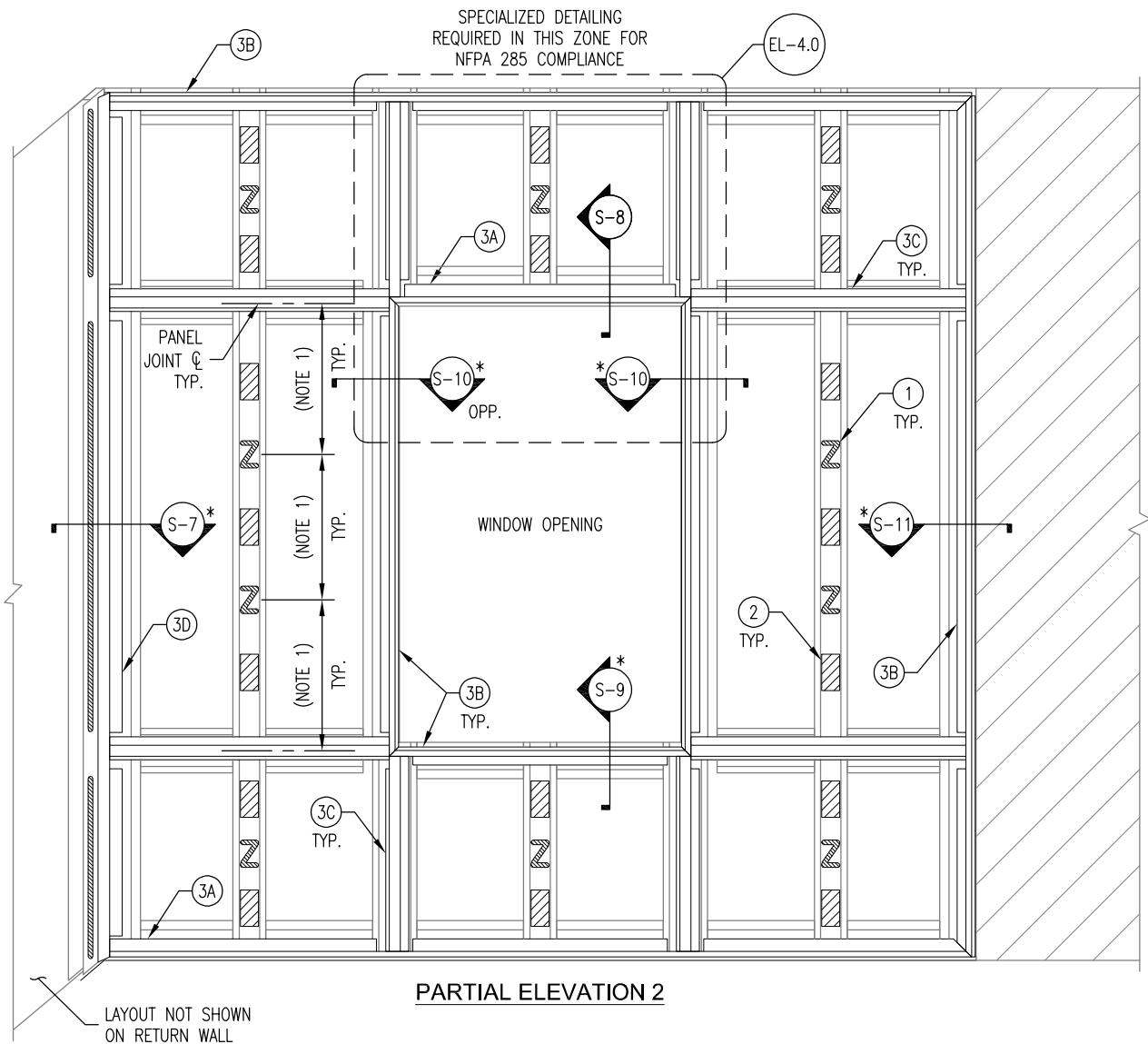
www.LaminatorsInc.com

800.523.2347

SYSTEM COMPONENT LAYOUT (PARTIAL ELEVATION 1)

**1-PIECE, TIGHT-FIT MOLDING INSTALLATION SYSTEM
WITH BD&V SUB-FRAMING OVER OMEGA CI**

Date: 1/24/2020	Drawn By: JJM	Detail Set: 1P-BDV-OCI	Dwg. No.: EL-2.1	Rev: 02
--------------------	------------------	---------------------------	---------------------	------------



NOTES:

* DENOTES SECTIONS WITH AT LEAST (2) CONFIGURATIONS AVAILABLE (EX. S-1.1, S-1.2, ETC)

- ① 1/4" (MIN) TO 3/8" (MAX) BEAD OF LAMINATORS APPROVED PANEL ADHESIVE APPLIED TO FACE OF AH SUB-FRAMING MEMBERS IN 2" X 3" Z-FORMATION; SPACING OF ADHESIVE LOCATIONS TO BE BASED ON WIND LOADS:
 - UP TO 60 PSF (ASD): 16" O.C. VERTICALLY (MAX) WITHIN FIELD OF PANEL
- ② 4" LONG STRIPS OF FOAM TAPE (PART NO. 12847) APPLIED TO FACE OF AH SUB-FRAMING MEMBERS CENTERED BETWEEN ADHESIVE LOCATIONS

- ③ MOLDING LAYOUT SHOWN FOR PANEL INSTALLATION WITH VERTICAL PASS-THROUGH JOINTS; REFER TO SYSTEM GUIDE FOR MOLDING INTERSECTION OPTIONS, NOTCHING PROCEDURES, AND SEQUENCING:
 - A. J-MOLDING (PART NO. 4515X) INSTALLED ALONG WINDOW HEAD AND BASE OF WALL
 - B. TERMINATION J-MOLDING (PART NO. 4565X) INSTALLED ALONG WINDOW SILL AND JAMBS, TOP OF WALL, AND RIGHT VERTICAL EDGE
 - C. H-MOLDINGS (PART NO. 4505X) OR REVEAL H-MOLDINGS (PART NO. 4595X) INSTALLED ALONG HORIZONTAL AND VERTICAL PANEL JOINTS (H-MOLDINGS SHOWN)
 - D. INSIDER CORNER MOLDING (PART NO. 4525X) INSTALLED ALONG INSIDE CORNER

MOLDING FASTENING REQUIREMENTS (BASED ON WIND LOADS):

- UP TO 60 PSF (ASD): FASTEN MOLDINGS TO FACE OF SUB-FRAMING MEMBERS USING (1) #8 X 1/2" PHILLIPS MODIFIED TRUSS HEAD SELF-DRILLING SCREW (PART NO. 48BDV-FASTENER-MOLDING) AT 12" O.C. (MAX)
 - NOTE: PHILLIPS PAN HEAD SELF-DRILLING SCREWS (PART NO. 48BDV-FASTENER-C&C) TO BE USED FOR FASTENING OF TERMINATION J- AND Z-MOLDINGS



LAMINATORS
Composite Panel Solutions

www.LaminatorsInc.com

800.523.2347

SYSTEM COMPONENT LAYOUT (PARTIAL ELEVATION 2)

1-PIECE, TIGHT-FIT MOLDING INSTALLATION SYSTEM
WITH BD&V SUB-FRAMING OVER OMEGA CI

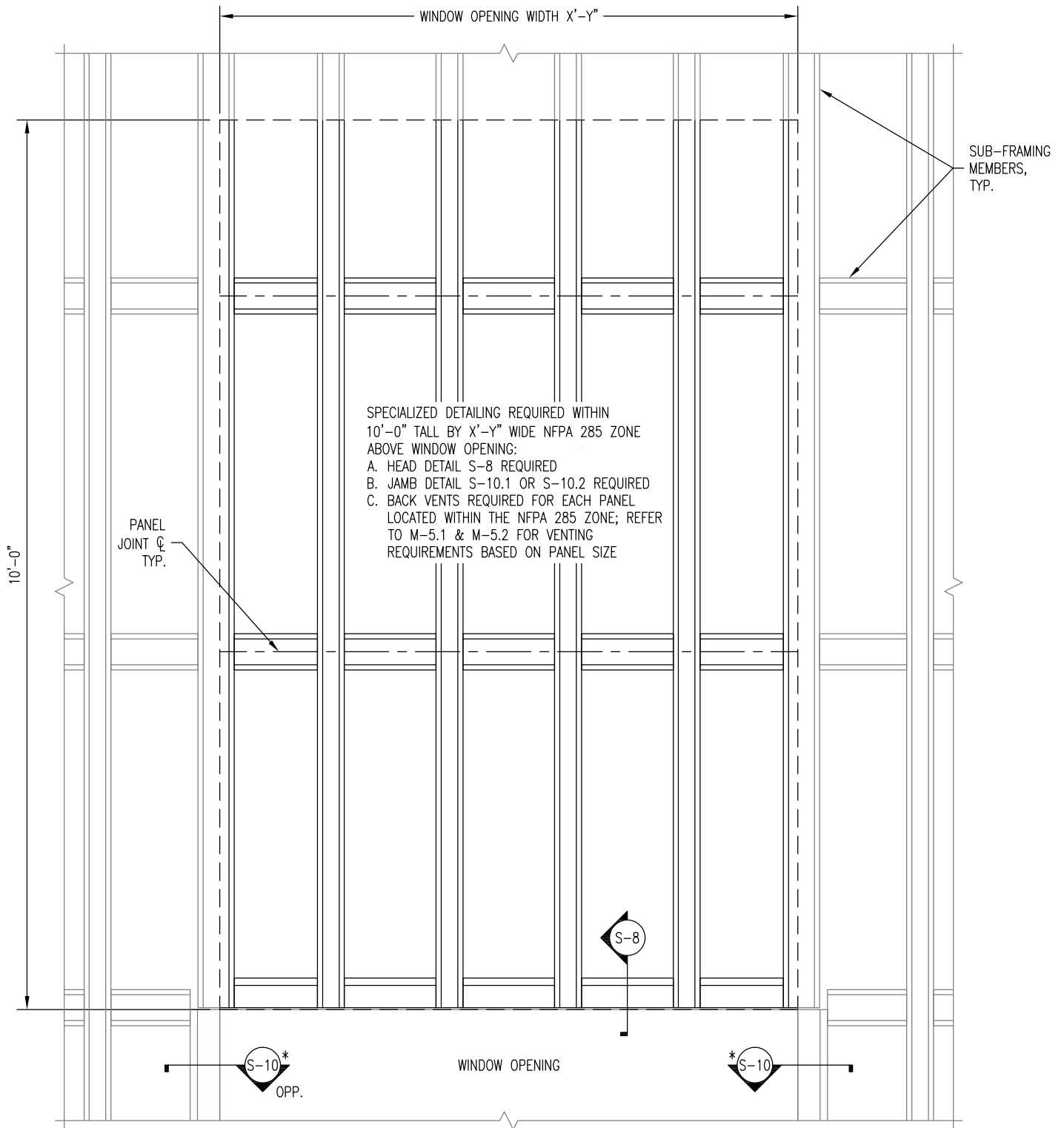
Date:
1/24/2020

Drawn By:
JJM

Detail Set:
1P-BDV-OCI

Dwg. No.:
EL-3.1

Rev:
02



DETAIL NOTES:

1. REPRESENTATIVE ZONE ABOVE WINDOW ENLARGED FOR CLARITY FROM THAT SHOWN ON EL-3.0 & EL-3.1
2. ABOVE WINDOW OPENINGS, VERTICAL PANEL JOINTS ARE TO BE ALIGNED WITH JAMBS OR MULLIONS ONLY



www.LaminatorsInc.com

800.523.2347

NFPA 285 COMPLIANCE DETAILING REQUIREMENTS

1-PIECE, TIGHT-FIT MOLDING INSTALLATION SYSTEM
WITH BD&V SUB-FRAMING OVER OMEGA CI

Date:
6/12/2019

Drawn By:
JJM

Detail Set:
1P-BDV-OCI

Dwg. No.:
EL-4.0

Rev:
01

NOTE: THIS DETAIL IS APPLICABLE
ALONG BOTH HORIZONTAL AND
VERTICAL PANEL JOINTS

1-PIECE, TIGHT-FIT
MOLDING INSTALLATION
SYSTEM WITH BD&V
SUB-FRAMING
(1-1/4" NOM. DEPTH)

OMEGA CI
RIGID INSULATION PANELS
(2.1 INCH)

NEW OR EXISTING EXTERIOR
WALL ASSEMBLY WITH
EXTERIOR-GRADE GYPSUM
SHEATHING AND 18 GA. (MIN)
STEEL STUDS AT 16" O.C.
(MAX) SPACING

REQUIRED VAPOR-PERMEABLE AIR AND WATER BARRIER
BY OTHERS APPLIED TO FACE OF OMEGA CI PANELS

OPTIONAL AIR AND WATER BARRIER BY OTHERS
(INCLUSION TO BE DETERMINED BY DESIGN PROFESSIONAL
OF RECORD; VAPOR-PERMEABLE RECOMMENDED)

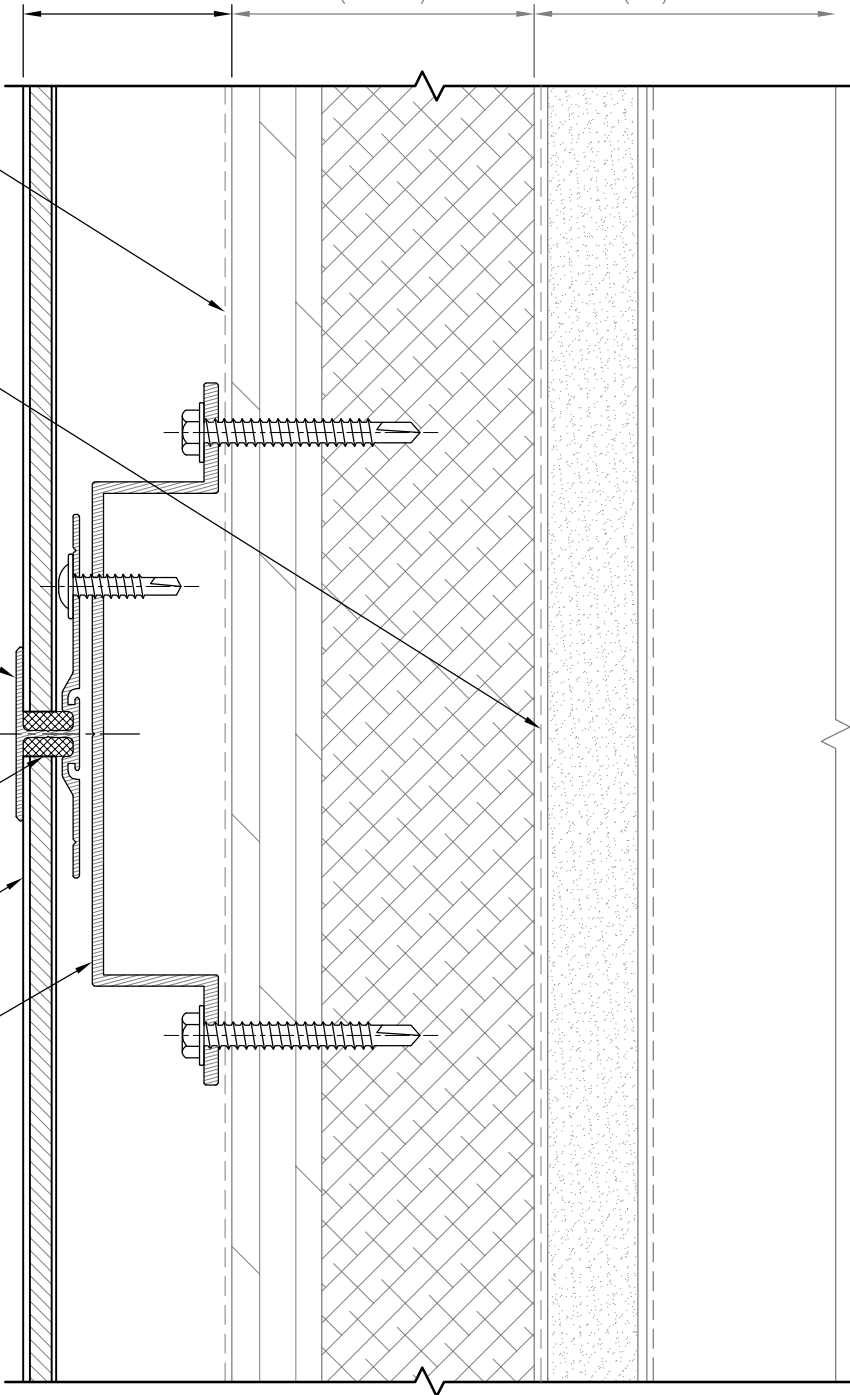
H-MOLDING (PART NO. 4505X) FASTENED TO
SH SUB-FRAMING MEMBER (ALIGN CENTERLINES)

PANEL JOINT ϕ

LAMINATORS APPROVED SILICONE CAULK, TYP.

6mm OMEGA-LITE PANEL, TYP.

SH SUB-FRAMING MEMBER (PART NO. 48BDV-SH)
FASTENED TO OMEGA CI



SECTION

DETAIL NOTES:

1. SPACING SHOWN BETWEEN SOME INSTALLATION SYSTEM COMPONENTS EXAGGERATED FOR CLARITY
2. REFER TO BD&V SUB-FRAMING LAYOUTS FOR FASTENING REQUIREMENTS
3. REFER TO SYSTEM COMPONENT LAYOUTS FOR TYPICAL FOAM TAPE, PANEL ADHESIVE, AND MOLDING FASTENING REQUIREMENTS
4. OMEGA CI INSTALLATION COMPONENTS NOT SHOWN OR ANNOTATED FOR CLARITY



www.LaminatorsInc.com

800.523.2347

JOINT DETAIL
1-PIECE, TIGHT-FIT MOLDING INSTALLATION SYSTEM
WITH BD&V SUB-FRAMING OVER OMEGA CI

Date: 1/24/2020	Drawn By: JJM	Detail Set: 1P-BDV-OCI	Dwg. No.: S-1.1	Rev: 01
--------------------	------------------	---------------------------	--------------------	------------

NOTE: THIS DETAIL IS APPLICABLE
ALONG BOTH HORIZONTAL AND
VERTICAL PANEL JOINTS

1-PIECE, TIGHT-FIT
MOLDING INSTALLATION
SYSTEM OVER BD&V
SUB-FRAMING
(1-1/4" NOM. DEPTH)

OMEGA CI
RIGID INSULATION PANELS
(2.1 INCH)

NEW OR EXISTING EXTERIOR
WALL ASSEMBLY WITH
EXTERIOR-GRADE GYPSUM
SHEATHING AND 18 GA. (MIN)
STEEL STUDS AT 16" O.C.
(MAX) SPACING

REQUIRED VAPOR-PERMEABLE AIR AND WATER BARRIER
BY OTHERS APPLIED TO FACE OF OMEGA CI PANELS

OPTIONAL AIR AND WATER BARRIER BY OTHERS
(INCLUSION TO BE DETERMINED BY DESIGN PROFESSIONAL
OF RECORD; VAPOR-PERMEABLE RECOMMENDED)

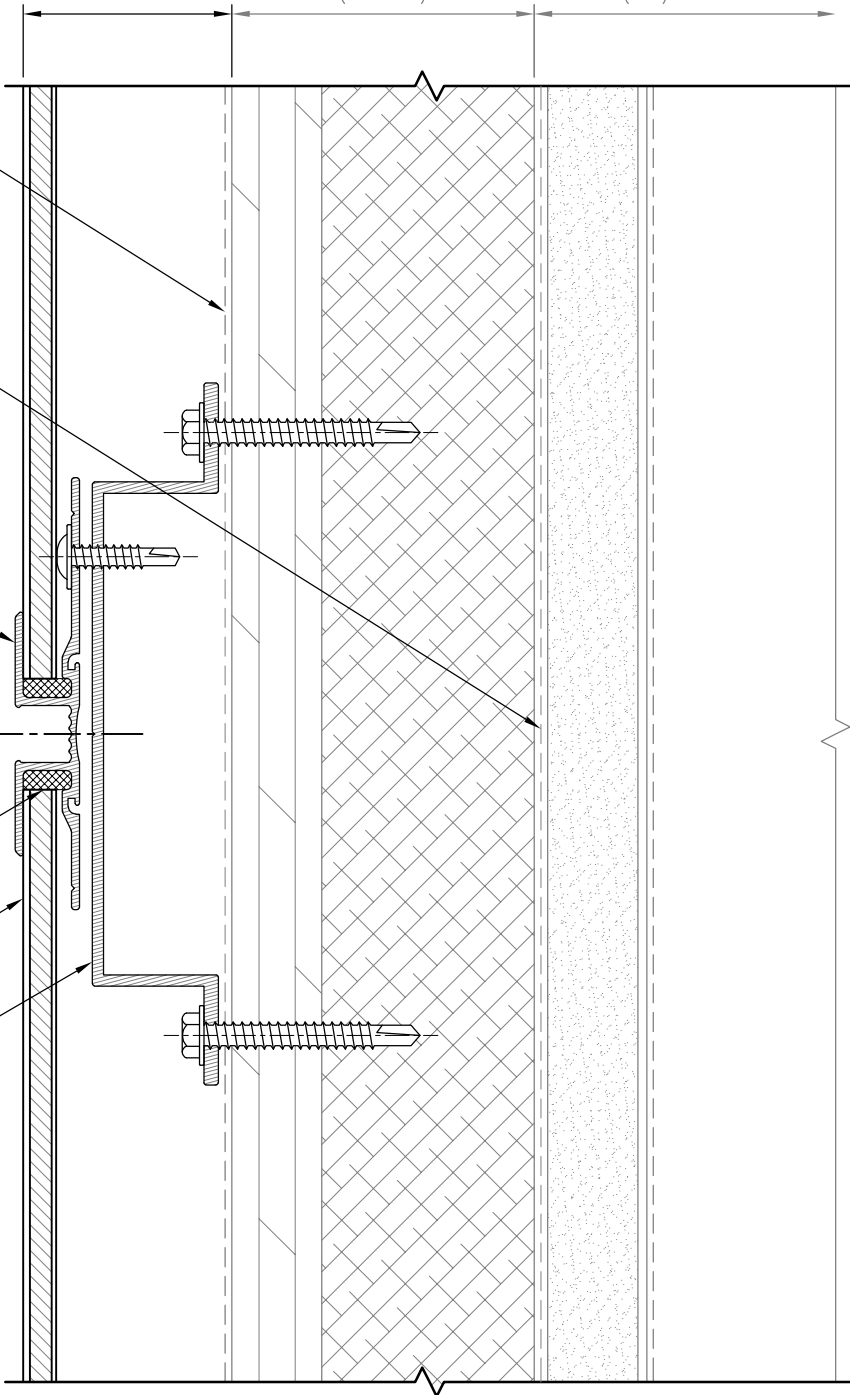
REVEAL H-MOLDING (PART NO. 4595X) FASTENED TO
SH SUB-FRAMING MEMBER (ALIGN CENTERLINES)

PANEL JOINT ϕ

LAMINATORS APPROVED SILICONE CAULK, TYP.

6mm OMEGA-LITE PANEL, TYP.

SH SUB-FRAMING MEMBER (PART NO. 48BDV-SH)
FASTENED TO OMEGA CI



SECTION

DETAIL NOTES:

1. SPACING SHOWN BETWEEN SOME INSTALLATION SYSTEM COMPONENTS EXAGGERATED FOR CLARITY
2. REFER TO BD&V SUB-FRAMING LAYOUTS FOR FASTENING REQUIREMENTS
3. REFER TO SYSTEM COMPONENT LAYOUTS FOR TYPICAL FOAM TAPE, PANEL ADHESIVE, AND MOLDING FASTENING REQUIREMENTS
4. OMEGA CI INSTALLATION COMPONENTS NOT SHOWN OR ANNOTATED FOR CLARITY

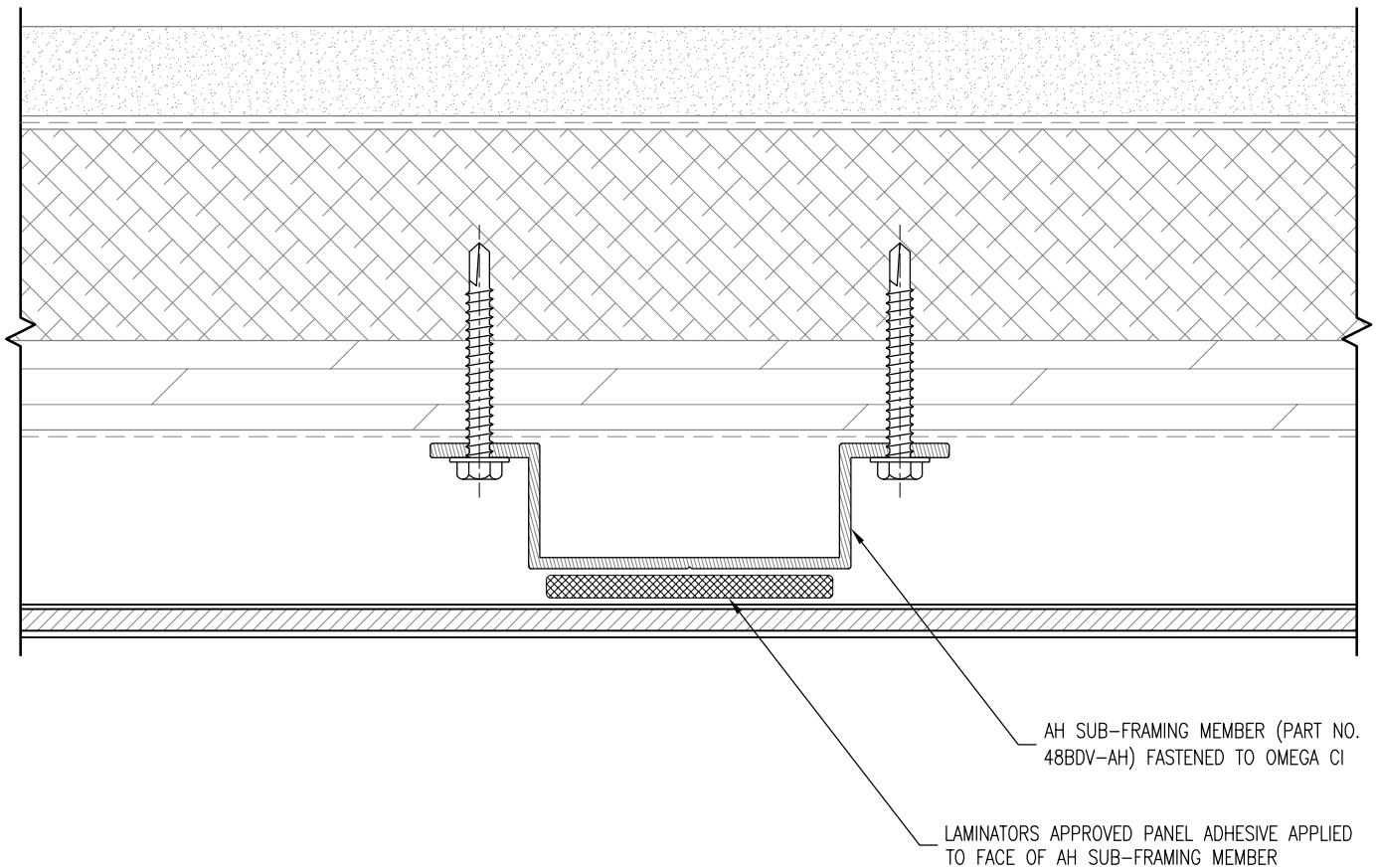


www.LaminatorsInc.com

800.523.2347

JOINT DETAIL (REVEAL H-MOLDING)
1-PIECE, TIGHT-FIT MOLDING INSTALLATION SYSTEM
WITH BD&V SUB-FRAMING OVER OMEGA CI

Date: 3/18/2022	Drawn By: JJM	Detail Set: 1P-BDV-OCI	Dwg. No.: S-1.2	Rev: 02
--------------------	------------------	---------------------------	--------------------	------------



AH SUB-FRAMING MEMBER (PART NO. 48BDV-AH) FASTENED TO OMEGA CI

LAMINATORS APPROVED PANEL ADHESIVE APPLIED TO FACE OF AH SUB-FRAMING MEMBER

PLAN SECTION

DETAIL NOTES:

1. SPACING SHOWN BETWEEN SOME INSTALLATION SYSTEM COMPONENTS EXAGGERATED FOR CLARITY
2. REFER TO BD&V SUB-FRAMING LAYOUTS FOR FASTENING REQUIREMENTS
3. REFER TO SYSTEM COMPONENT LAYOUTS FOR TYPICAL FOAM TAPE, PANEL ADHESIVE, AND MOLDING FASTENING REQUIREMENTS
4. OMEGA CI INSTALLATION COMPONENTS NOT SHOWN OR ANNOTATED FOR CLARITY
5. REFER TO S-1.1 OR S-1.2 FOR TYPICAL COMPONENTS NOT ANNOTATED



LAMINATORS
Composite Panel Solutions

www.LaminatorsInc.com

800.523.2347

INTERMEDIATE PANEL SUPPORT DETAIL

1-PIECE, TIGHT-FIT MOLDING INSTALLATION SYSTEM
WITH BD&V SUB-FRAMING OVER OMEGA CI

Date:
1/24/2020

Drawn By:
JJM

Detail Set:
1P-BDV-OCI

Dwg. No.:
S-2

Rev:
01

MEMBRANE FLASHING BY OTHERS LAPPED 2" (MIN)
OVER ALUMINUM FLASHING IN SHINGLE FASHION

ALUMINUM FLASHING CLEAT BY OTHERS
TERMINATED BEHIND NEW VENEER
SYSTEM/DISSIMILAR MATERIAL; WATER
CONTROLS AT INTERFACE BY OTHERS

ALUMINUM FLASHING BY OTHERS

EJ SUB-FRAMING MEMBER
(PART NO. 48BDV-EJ)
FASTENED TO OMEGA CI

WATER CONTROLS AT FLASHING
INTERFACE BY OTHERS

INSTALLATION OF NEW VENEER
SYSTEM/DISSIMILAR MATERIAL
TO FOLLOW

J-MOLDING (PART NO. 4515X) FASTENED TO SUB-FRAMING MEMBER

1/2" (NOM) LAMINATORS APPROVED SILICONE CAULK JOINT

FLASHING RETURNED AROUND CLEAT EDGE

PLAN SECTION

DETAIL NOTES:

1. SPACING SHOWN BETWEEN SOME INSTALLATION SYSTEM COMPONENTS EXAGGERATED FOR CLARITY
2. REFER TO BD&V SUB-FRAMING LAYOUTS FOR FASTENING REQUIREMENTS
3. REFER TO SYSTEM COMPONENT LAYOUTS FOR TYPICAL FOAM TAPE, PANEL ADHESIVE, AND MOLDING FASTENING REQUIREMENTS
4. OMEGA CI INSTALLATION COMPONENTS NOT SHOWN OR ANNOTATED FOR CLARITY
5. REFER TO S-1.1 OR S-1.2 FOR TYPICAL COMPONENTS NOT ANNOTATED



LAMINATORS
Composite Panel Solutions

www.LaminatorsInc.com

800.523.2347

LEFT VERTICAL EDGE DETAIL (ADJACENT TO NEW)

1-PIECE, TIGHT-FIT MOLDING INSTALLATION SYSTEM
WITH BD&V SUB-FRAMING OVER OMEGA CI

Date:
1/24/2020

Drawn By:
JJM

Detail Set:
1P-BDV-OCI

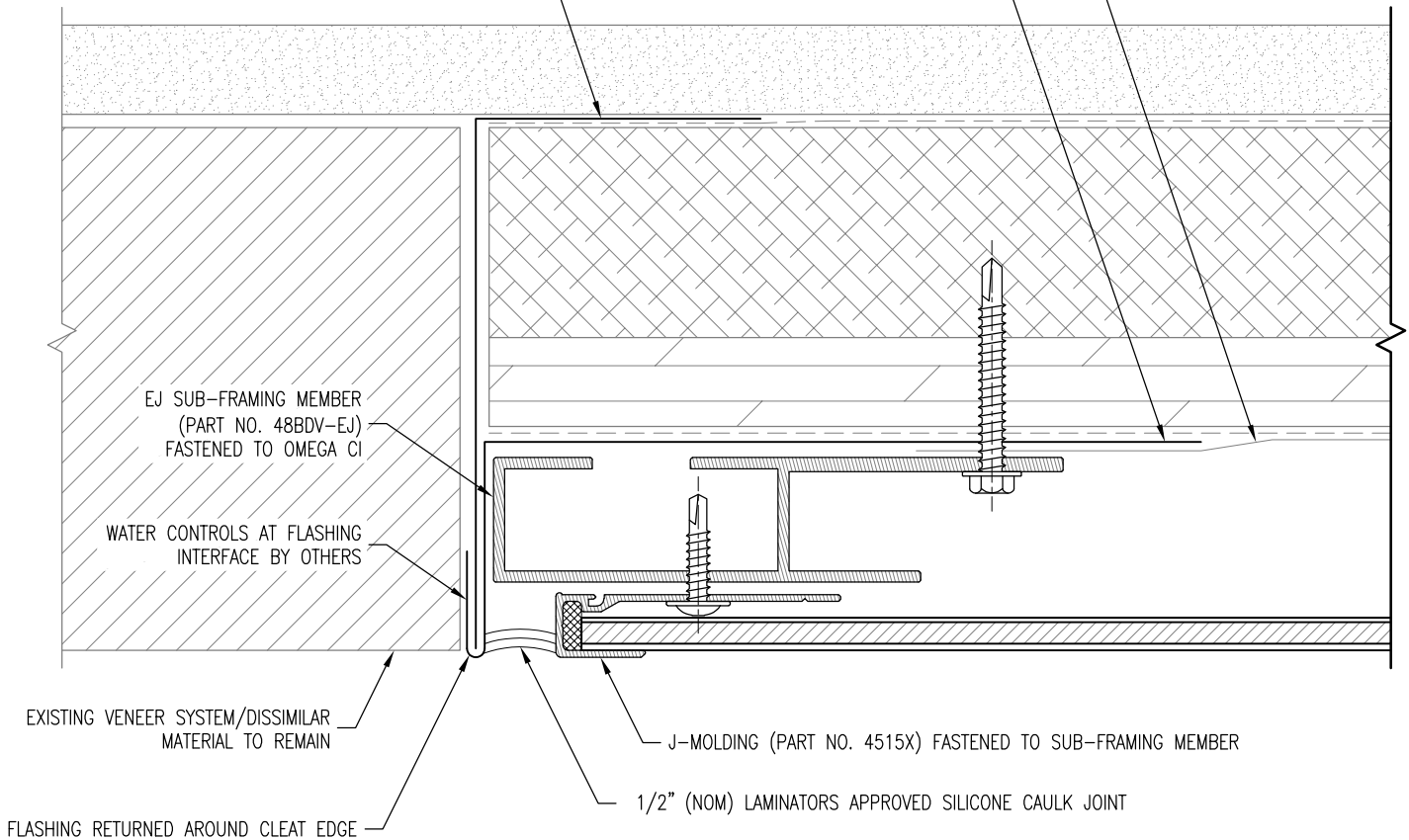
Dwg. No.:
S-3.1

Rev:
01

MEMBRANE FLASHING BY OTHERS LAPPED 2" (MIN)
OVER ALUMINUM FLASHING IN SHINGLE FASHION

ALUMINUM FLASHING CLEAT BY OTHERS TERMINATED
BEHIND OMEGA CI; REFER TO OMEGA CI INSTALLATION
DETAILS FOR ADDITIONAL INFORMATION

ALUMINUM FLASHING BY OTHERS



PLAN SECTION

DETAIL NOTES:

1. SPACING SHOWN BETWEEN SOME INSTALLATION SYSTEM COMPONENTS EXAGGERATED FOR CLARITY
2. REFER TO BD&V SUB-FRAMING LAYOUTS FOR FASTENING REQUIREMENTS
3. REFER TO SYSTEM COMPONENT LAYOUTS FOR TYPICAL FOAM TAPE, PANEL ADHESIVE, AND MOLDING FASTENING REQUIREMENTS
4. OMEGA CI INSTALLATION COMPONENTS NOT SHOWN OR ANNOTATED FOR CLARITY
5. REFER TO S-1.1 OR S-1.2 FOR TYPICAL COMPONENTS NOT ANNOTATED



LAMINATORS
Composite Panel Solutions

www.LaminatorsInc.com

800.523.2347

LEFT VERTICAL EDGE DETAIL (ADJACENT TO EXISTING)

1-PIECE, TIGHT-FIT MOLDING INSTALLATION SYSTEM
WITH BD&V SUB-FRAMING OVER OMEGA CI

Date:
1/24/2020

Drawn By:
JJM

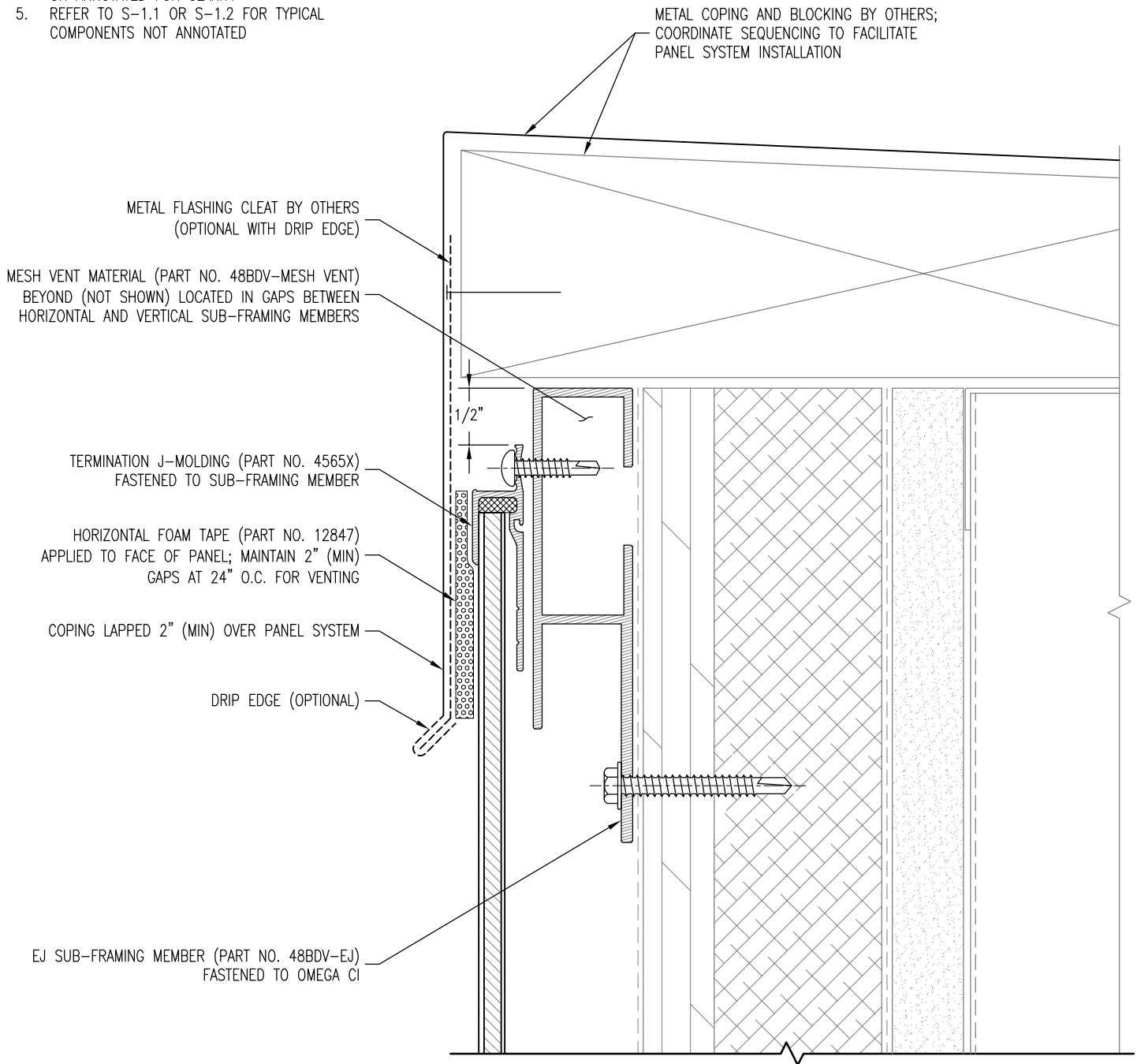
Detail Set:
1P-BDV-OCI

Dwg. No.:
S-3.2

Rev:
01

DETAIL NOTES:

1. SPACING SHOWN BETWEEN SOME INSTALLATION SYSTEM COMPONENTS EXAGGERATED FOR CLARITY
2. REFER TO BD&V SUB-FRAMING LAYOUTS FOR FASTENING REQUIREMENTS
3. REFER TO SYSTEM COMPONENT LAYOUTS FOR TYPICAL FOAM TAPE, PANEL ADHESIVE, AND MOLDING FASTENING REQUIREMENTS
4. OMEGA CI INSTALLATION COMPONENTS NOT SHOWN OR ANNOTATED FOR CLARITY
5. REFER TO S-1.1 OR S-1.2 FOR TYPICAL COMPONENTS NOT ANNOTATED



METAL COPING AND BLOCKING BY OTHERS;
COORDINATE SEQUENCING TO FACILITATE
PANEL SYSTEM INSTALLATION

METAL FLASHING CLEAT BY OTHERS
(OPTIONAL WITH DRIP EDGE)

MESH VENT MATERIAL (PART NO. 48BDV-MESH VENT)
BEYOND (NOT SHOWN) LOCATED IN GAPS BETWEEN
HORIZONTAL AND VERTICAL SUB-FRAMING MEMBERS

1/2"

TERMINATION J-MOLDING (PART NO. 4565X)
FASTENED TO SUB-FRAMING MEMBER

HORIZONTAL FOAM TAPE (PART NO. 12847)
APPLIED TO FACE OF PANEL; MAINTAIN 2" (MIN)
GAPS AT 24" O.C. FOR VENTING

COPING LAPPED 2" (MIN) OVER PANEL SYSTEM

DRIP EDGE (OPTIONAL)

EJ SUB-FRAMING MEMBER (PART NO. 48BDV-EJ)
FASTENED TO OMEGA CI

SECTION



LAMINATORS
Composite Panel Solutions

www.LaminatorsInc.com

800.523.2347

TOP OF WALL DETAIL

1-PIECE, TIGHT-FIT MOLDING INSTALLATION SYSTEM
WITH BD&V SUB-FRAMING OVER OMEGA CI

Date:
1/24/2020

Drawn By:
JJM

Detail Set:
1P-BDV-OCI

Dwg. No.:
S-4.1

Rev:
01

DETAIL NOTES:

1. SPACING SHOWN BETWEEN SOME INSTALLATION SYSTEM COMPONENTS EXAGGERATED FOR CLARITY
2. REFER TO BD&V SUB-FRAMING LAYOUTS FOR FASTENING REQUIREMENTS
3. REFER TO SYSTEM COMPONENT LAYOUTS FOR TYPICAL FOAM TAPE, PANEL ADHESIVE, AND MOLDING FASTENING REQUIREMENTS
4. OMEGA CI INSTALLATION COMPONENTS NOT SHOWN OR ANNOTATED FOR CLARITY
5. REFER TO S-1.1 OR S-1.2 FOR TYPICAL COMPONENTS NOT ANNOTATED

METAL COPING AND BLOCKING BY OTHERS;
COORDINATE SEQUENCING TO FACILITATE
PANEL SYSTEM INSTALLATION

METAL FLASHING CLEAT BY OTHERS
(OPTIONAL WITH DRIP EDGE)

MESH VENT MATERIAL (PART NO. 48BDV-MESH VENT)
BEYOND (NOT SHOWN) LOCATED IN GAPS BETWEEN
HORIZONTAL AND VERTICAL SUB-FRAMING MEMBERS

TERMINATION Z-MOLDING (PART NO. 4575X)
FASTENED TO SUB-FRAMING MEMBER

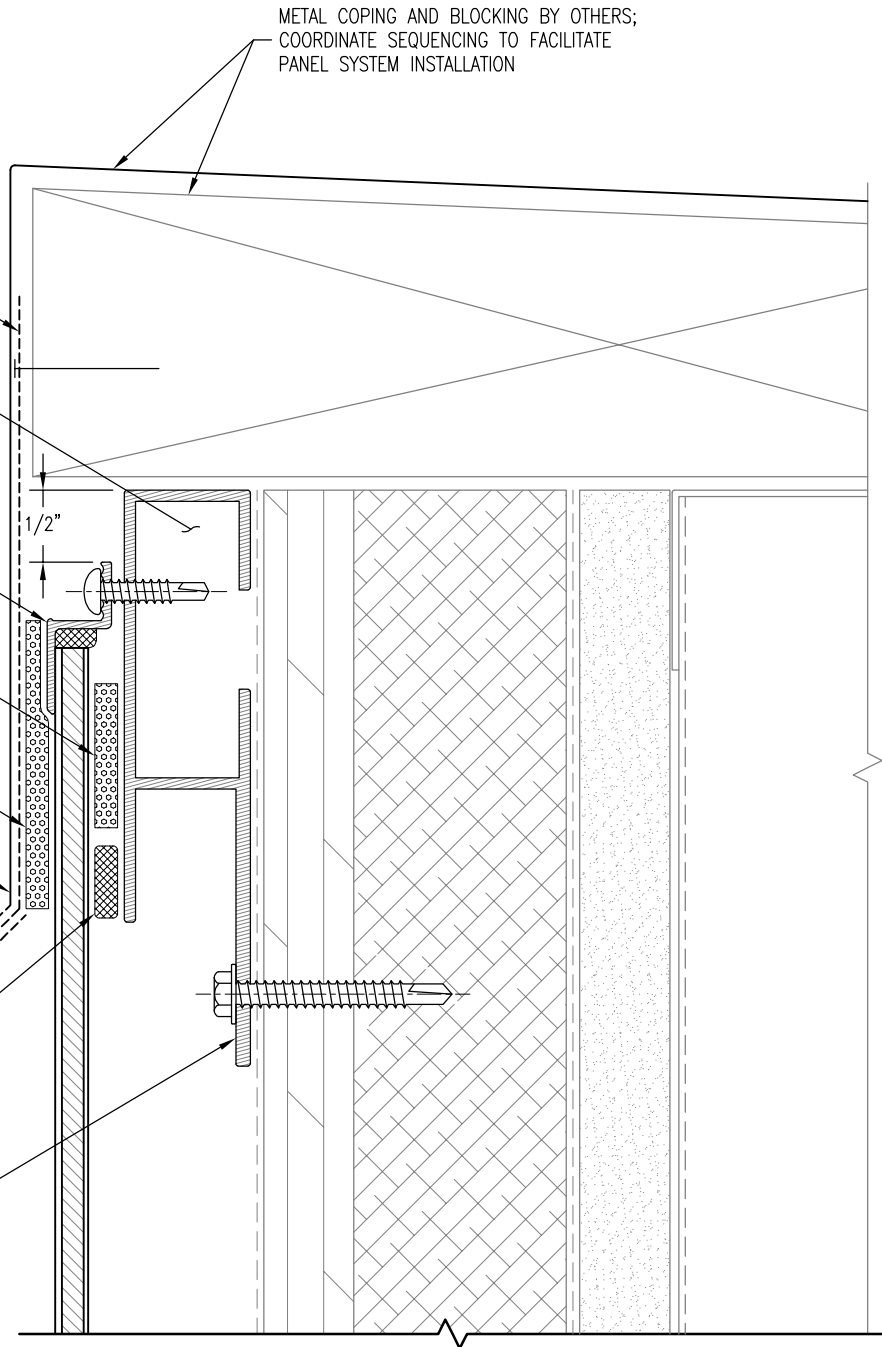
4" LONG STRIPS OF FOAM TAPE (PART NO. 12847),
MODIFIED TO 1" (MAX) WIDTH, APPLIED TO FACE OF
EJ SUB-FRAMING MEMBER AT 16" O.C.
HORIZONTALLY (MAX)

HORIZONTAL FOAM TAPE (PART NO. 12847) APPLIED
TO FACE OF PANEL; MAINTAIN 2" (MIN) GAPS AT
24" O.C. FOR VENTING

COPING LAPPED 2" (MIN) OVER PANEL SYSTEM
DRIP EDGE (OPTIONAL)

1/4" (MIN) TO 3/8" (MAX) BEAD OF LAMINATORS
APPROVED PANEL ADHESIVE APPLIED TO FACE OF
EJ SUB-FRAMING MEMBER FOR FULL PANEL WIDTH

EJ SUB-FRAMING MEMBER (PART NO. 48BDV-EJ)
FASTENED TO OMEGA CI



SECTION



LAMINATORS
Composite Panel Solutions

www.LaminatorsInc.com

800.523.2347

TOP OF WALL DETAIL w/ TERMINATION Z-MOLDING

1-PIECE, TIGHT-FIT MOLDING INSTALLATION SYSTEM
WITH BD&V SUB-FRAMING OVER OMEGA CI

Date:
1/24/2020

Drawn By:
JJM

Detail Set:
1P-BDV-OCI

Dwg. No.:
S-4.2

Rev:
01

MEMBRANE FLASHING BY OTHERS LAPPED 2" (MIN)
OVER ALUMINUM FLASHING IN SHINGLE FASHION

ALUMINUM FLASHING BY OTHERS

EJ SUB-FRAMING MEMBER (PART NO. 48BDV-EJ)
FASTENED TO OMEGA CI

MESH VENT MATERIAL (PART NO. 48BDV-MESH VENT)
BEYOND (NOT SHOWN) LOCATED IN GAPS BETWEEN
HORIZONTAL AND VERTICAL SUB-FRAMING MEMBERS

J-MOLDING (PART NO. 4515X) FASTENED TO
SUB-FRAMING MEMBER

1/4" (MIN)

AIR AND WATER BARRIER BY OTHERS LAPPED
2" (MIN) OVER OMEGA CI MEMBRANE
FLASHING (NOT SHOWN) IN SHINGLE FASHION;
REFER TO OMEGA CI INSTALLATION DETAILS
FOR ADDITIONAL INFORMATION

GRADE

BUTYL SEALANT APPLIED BETWEEN
ALUMINUM FLASHING AND GRADE

SECTION

DETAIL NOTES:

1. SPACING SHOWN BETWEEN SOME INSTALLATION SYSTEM COMPONENTS EXAGGERATED FOR CLARITY
2. REFER TO BD&V SUB-FRAMING LAYOUTS FOR FASTENING REQUIREMENTS
3. REFER TO SYSTEM COMPONENT LAYOUTS FOR TYPICAL FOAM TAPE, PANEL ADHESIVE, AND MOLDING FASTENING REQUIREMENTS
4. OMEGA CI INSTALLATION COMPONENTS NOT SHOWN OR ANNOTATED FOR CLARITY
5. REFER TO S-1.1 OR S-1.2 FOR TYPICAL COMPONENTS NOT ANNOTATED



LAMINATORS
Composite Panel Solutions

www.LaminatorsInc.com

800.523.2347

BASE OF WALL DETAIL

1-PIECE, TIGHT-FIT MOLDING INSTALLATION SYSTEM
WITH BD&V SUB-FRAMING OVER OMEGA CI

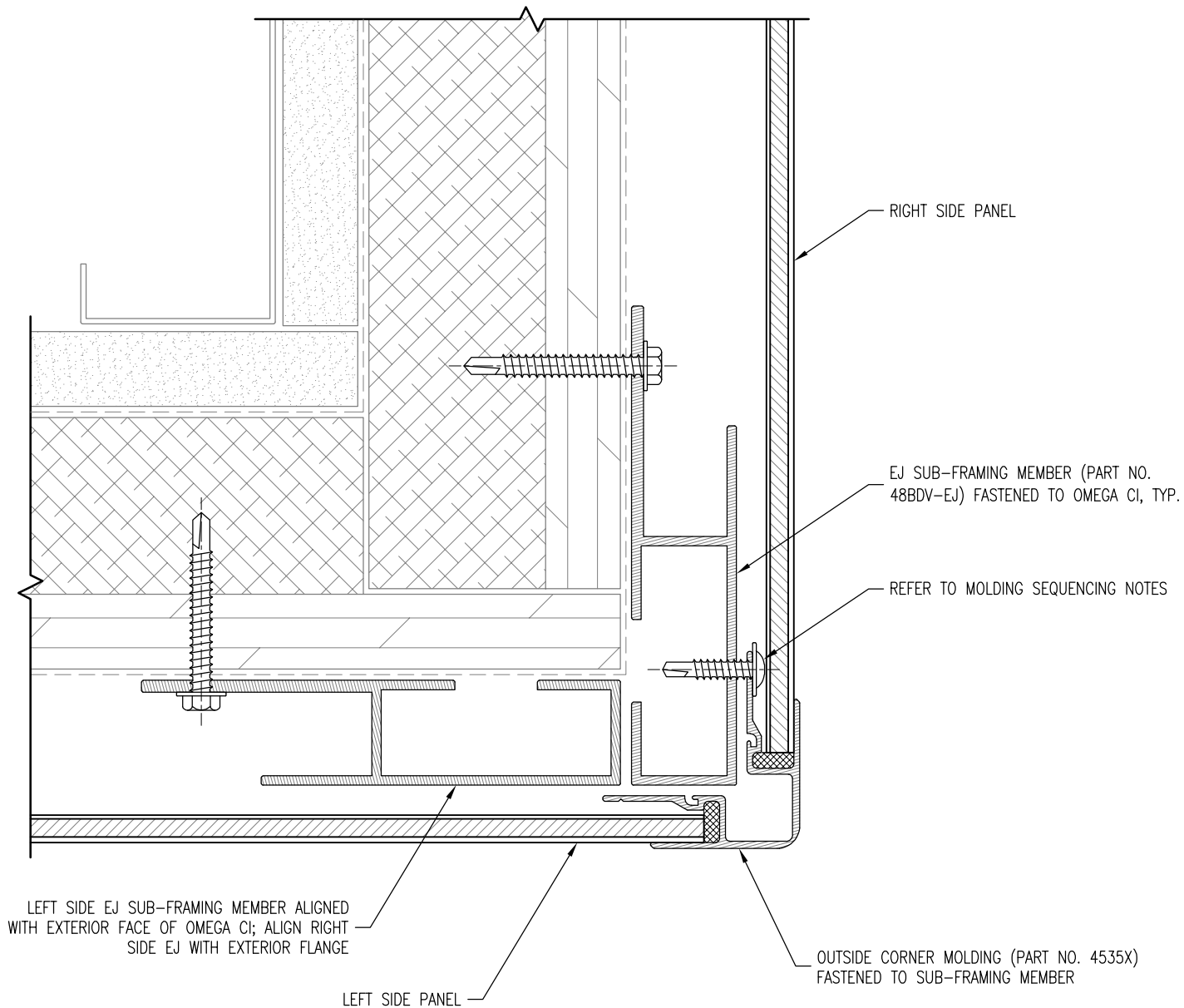
Date:
1/24/2020

Drawn By:
JJM

Detail Set:
1P-BDV-OCI

Dwg. No.:
S-5

Rev:
01



PLAN SECTION

DETAIL NOTES:

1. SPACING SHOWN BETWEEN SOME INSTALLATION SYSTEM COMPONENTS EXAGGERATED FOR CLARITY
2. REFER TO BD&V SUB-FRAMING LAYOUTS FOR FASTENING REQUIREMENTS
3. REFER TO SYSTEM COMPONENT LAYOUTS FOR TYPICAL FOAM TAPE, PANEL ADHESIVE, AND MOLDING FASTENING REQUIREMENTS
4. OMEGA CI INSTALLATION COMPONENTS NOT SHOWN OR ANNOTATED FOR CLARITY
5. REFER TO S-1.1 OR S-1.2 FOR TYPICAL COMPONENTS NOT ANNOTATED

MOLDING SEQUENCING NOTES:

1. PROGRESS INSTALLATION FROM LEFT TO RIGHT AROUND CORNER
2. FASTEN RIGHT FLANGE OF OUTSIDE CORNER MOLDING TO SUB-FRAMING MEMBER PRIOR TO INSTALLATION OF RIGHT SIDE PANELS
3. REFER TO SYSTEM GUIDE FOR ADDITIONAL INFORMATION



LAMINATORS
Composite Panel Solutions

www.LaminatorsInc.com

800.523.2347

OUTSIDE CORNER DETAIL (MOLDING OPTION)

1-PIECE, TIGHT-FIT MOLDING INSTALLATION SYSTEM WITH BD&V SUB-FRAMING OVER OMEGA CI

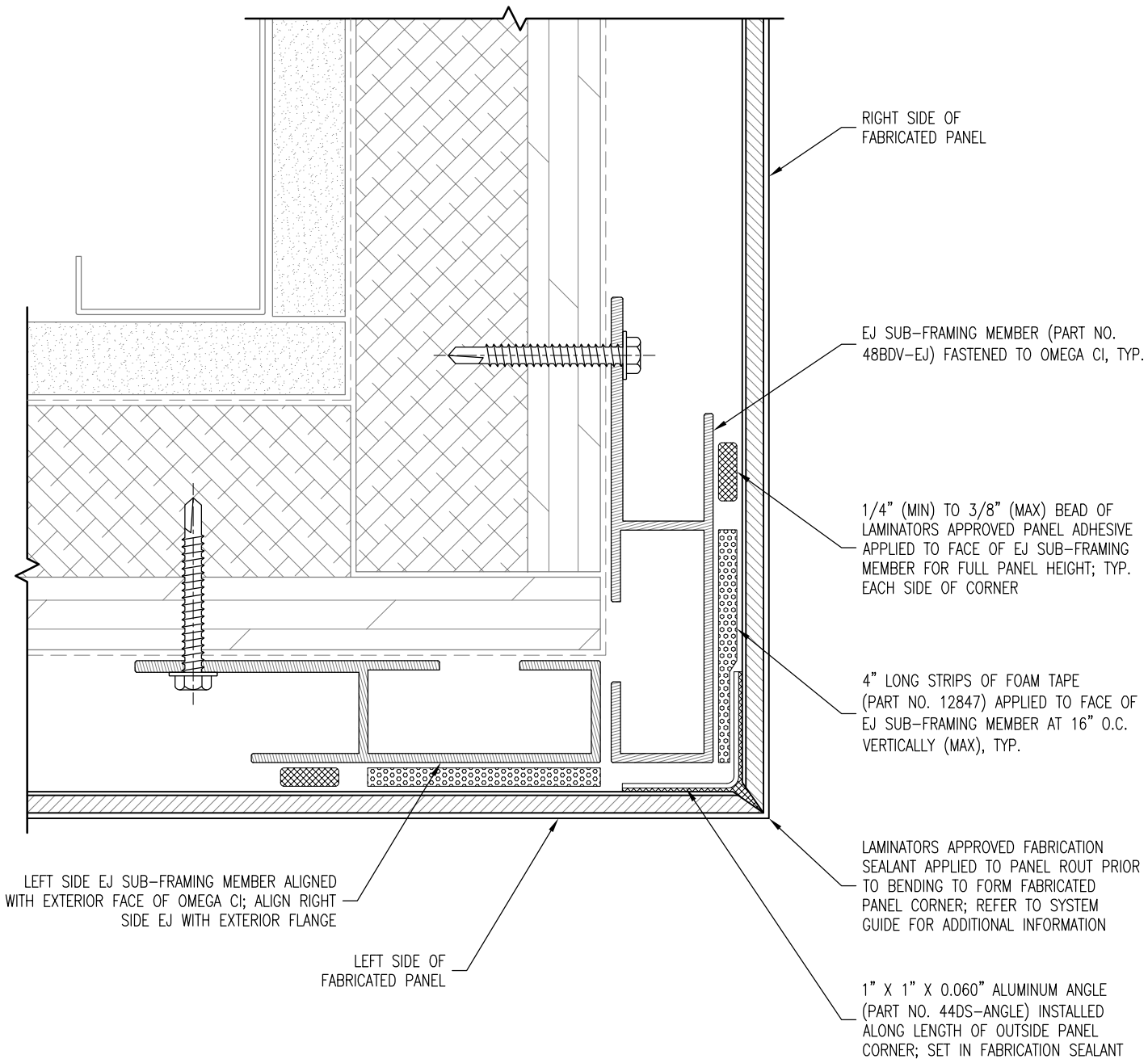
Date:
1/24/2020

Drawn By:
JJM

Detail Set:
1P-BDV-OCI

Dwg. No.:
S-6.1

Rev:
01



LEFT SIDE EJ SUB-FRAMING MEMBER ALIGNED WITH EXTERIOR FACE OF OMEGA CI; ALIGN RIGHT SIDE EJ WITH EXTERIOR FLANGE

LEFT SIDE OF FABRICATED PANEL

RIGHT SIDE OF FABRICATED PANEL

EJ SUB-FRAMING MEMBER (PART NO. 48BDV-EJ) FASTENED TO OMEGA CI, TYP.

1/4" (MIN) TO 3/8" (MAX) BEAD OF LAMINATORS APPROVED PANEL ADHESIVE APPLIED TO FACE OF EJ SUB-FRAMING MEMBER FOR FULL PANEL HEIGHT; TYP. EACH SIDE OF CORNER

4" LONG STRIPS OF FOAM TAPE (PART NO. 12847) APPLIED TO FACE OF EJ SUB-FRAMING MEMBER AT 16" O.C. VERTICALLY (MAX), TYP.

LAMINATORS APPROVED FABRICATION SEALANT APPLIED TO PANEL ROUT PRIOR TO BENDING TO FORM FABRICATED PANEL CORNER; REFER TO SYSTEM GUIDE FOR ADDITIONAL INFORMATION

1" X 1" X 0.060" ALUMINUM ANGLE (PART NO. 44DS-ANGLE) INSTALLED ALONG LENGTH OF OUTSIDE PANEL CORNER; SET IN FABRICATION SEALANT

PLAN SECTION

DETAIL NOTES:

1. SPACING SHOWN BETWEEN SOME INSTALLATION SYSTEM COMPONENTS EXAGGERATED FOR CLARITY
2. REFER TO BD&V SUB-FRAMING LAYOUTS FOR FASTENING REQUIREMENTS
3. REFER TO SYSTEM COMPONENT LAYOUTS FOR TYPICAL FOAM TAPE, PANEL ADHESIVE, AND MOLDING FASTENING REQUIREMENTS
4. OMEGA CI INSTALLATION COMPONENTS NOT SHOWN OR ANNOTATED FOR CLARITY
5. REFER TO S-1.1 OR S-1.2 FOR TYPICAL COMPONENTS NOT ANNOTATED



LAMINATORS
Composite Panel Solutions

www.LaminatorsInc.com

800.523.2347

OUTSIDE CORNER DETAIL (FABRICATED OPTION)

1-PIECE, TIGHT-FIT MOLDING INSTALLATION SYSTEM WITH BD&V SUB-FRAMING OVER OMEGA CI

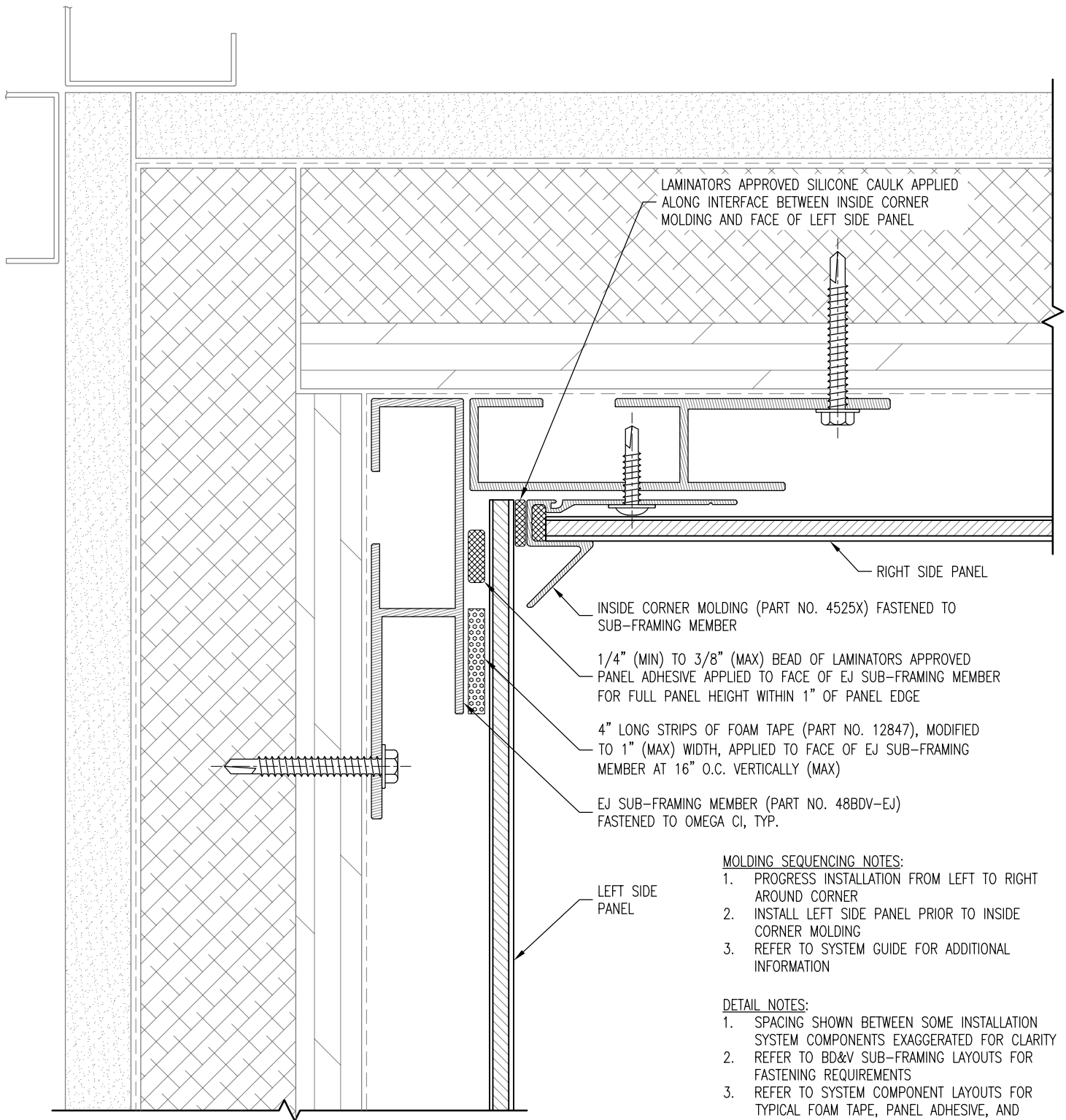
Date:
3/10/2020

Drawn By:
JJM

Detail Set:
1P-BDV-OCI

Dwg. No.:
S-6.2

Rev:
02



PLAN SECTION

MOLDING SEQUENCING NOTES:

1. PROGRESS INSTALLATION FROM LEFT TO RIGHT AROUND CORNER
2. INSTALL LEFT SIDE PANEL PRIOR TO INSIDE CORNER MOLDING
3. REFER TO SYSTEM GUIDE FOR ADDITIONAL INFORMATION

DETAIL NOTES:

1. SPACING SHOWN BETWEEN SOME INSTALLATION SYSTEM COMPONENTS EXAGGERATED FOR CLARITY
2. REFER TO BD&V SUB-FRAMING LAYOUTS FOR FASTENING REQUIREMENTS
3. REFER TO SYSTEM COMPONENT LAYOUTS FOR TYPICAL FOAM TAPE, PANEL ADHESIVE, AND MOLDING FASTENING REQUIREMENTS
4. OMEGA CI INSTALLATION COMPONENTS NOT SHOWN OR ANNOTATED FOR CLARITY
5. REFER TO S-1.1 OR S-1.2 FOR TYPICAL COMPONENTS NOT ANNOTATED



LAMINATORS
Composite Panel Solutions

www.LaminatorsInc.com

800.523.2347

INSIDE CORNER DETAIL (MOLDING OPTION)

**1-PIECE, TIGHT-FIT MOLDING INSTALLATION SYSTEM
WITH BD&V SUB-FRAMING OVER OMEGA CI**

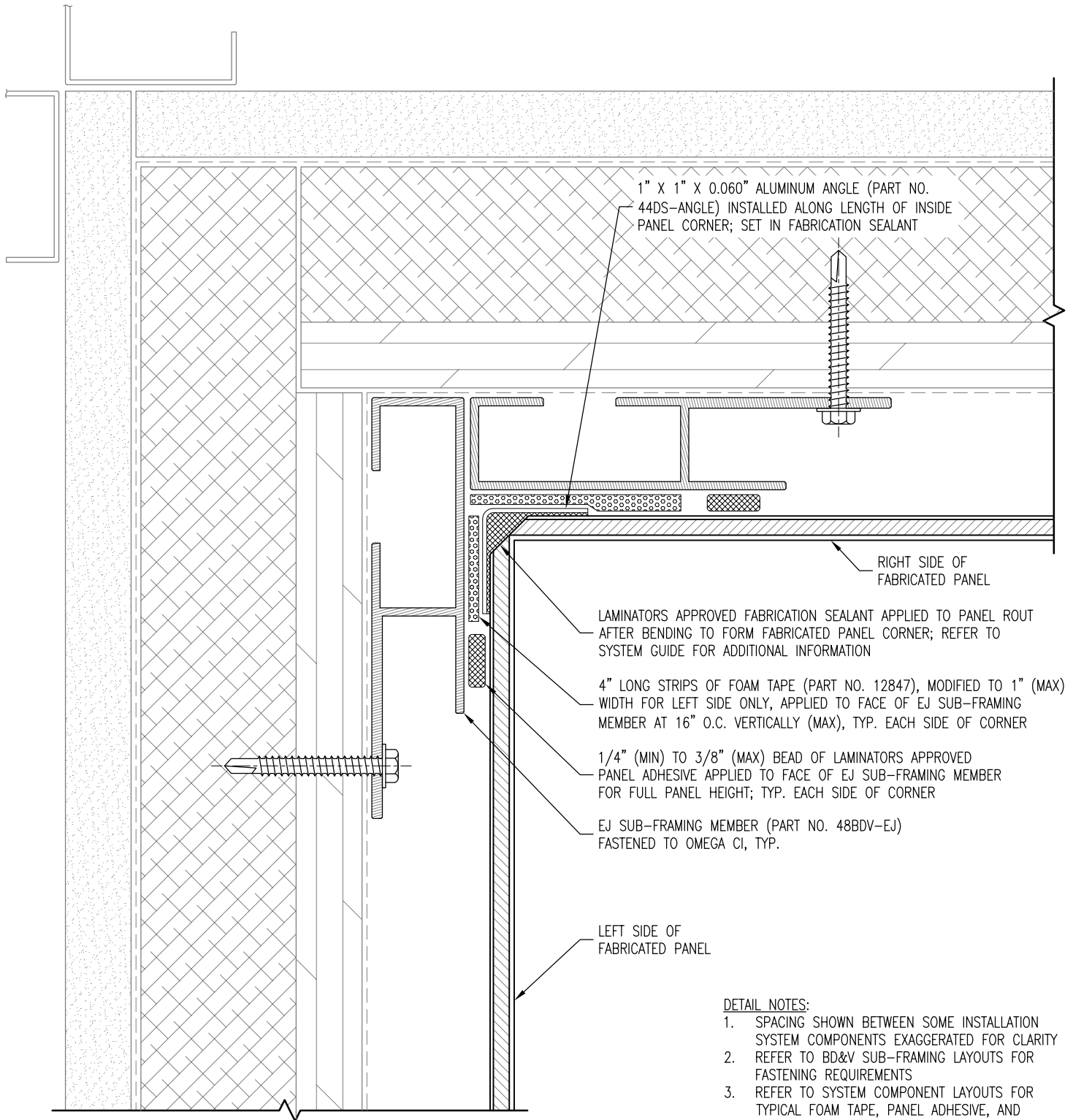
Date:
1/24/2020

Drawn By:
JJM

Detail Set:
1P-BDV-OCI

Dwg. No.:
S-7.1

Rev:
01



PLAN SECTION

DETAIL NOTES:

1. SPACING SHOWN BETWEEN SOME INSTALLATION SYSTEM COMPONENTS EXAGGERATED FOR CLARITY
2. REFER TO BD&V SUB-FRAMING LAYOUTS FOR FASTENING REQUIREMENTS
3. REFER TO SYSTEM COMPONENT LAYOUTS FOR TYPICAL FOAM TAPE, PANEL ADHESIVE, AND MOLDING FASTENING REQUIREMENTS
4. OMEGA CI INSTALLATION COMPONENTS NOT SHOWN OR ANNOTATED FOR CLARITY
5. REFER TO S-1.1 OR S-1.2 FOR TYPICAL COMPONENTS NOT ANNOTATED



LAMINATORS
Composite Panel Solutions

www.LaminatorsInc.com

800.523.2347

INSIDE CORNER DETAIL (FABRICATED OPTION)

**1-PIECE, TIGHT-FIT MOLDING INSTALLATION SYSTEM
WITH BD&V SUB-FRAMING OVER OMEGA CI**

Date:
3/10/2020

Drawn By:
JJM

Detail Set:
1P-BDV-OCI

Dwg. No.:
S-7.2

Rev:
02

LAMINATORS APPROVED SILICONE CAULK APPLIED TO AIR AND WATER BARRIER PRIOR TO ALUMINUM FLASHING INSTALLATION

ALUMINUM FLASHING BY OTHERS

OUTER LAYER OF TWO-PART STEEL FLASHING (22 GA. MIN) BY OTHERS

NOTE: SEQUENCE INSTALLATION OF FLASHING LAYERS TO AVOID FASTENER HEAD INTERFERENCE WITH INSTALLATION OF EJ SUB-FRAMING MEMBER

EJ SUB-FRAMING MEMBER (PART NO. 48BDV-EJ) FASTENED TO OMEGA CI

MESH VENT MATERIAL (PART NO. 48BDV-MESH VENT) BEYOND (NOT SHOWN) LOCATED IN GAPS BETWEEN HORIZONTAL AND VERTICAL SUB-FRAMING MEMBERS

J-MOLDING (PART NO. 4515X) FASTENED TO SUB-FRAMING MEMBER

INNER LAYER OF TWO-PART STEEL FLASHING (22 GA. MIN) BY OTHERS; HORIZONTAL LEG TO EXTEND TO A OR B DISTANCE, WHICHEVER IS FARTHER TOWARDS BUILDING INTERIOR

A = 1/2" (MIN)

1/4" (MIN)

HORIZONTAL LEG OF FLASHINGS TO EXTEND TO FACE OF MOLDING; DRIP EDGE (OPTIONAL)

B = 1/2" (MIN)

COORDINATE TERMINATION OF FLASHING WITH WINDOW SYSTEM; WATER CONTROLS AT INTERFACE BY OTHERS

WINDOW SYSTEM

SECTION

DETAIL NOTES:

1. SPACING SHOWN BETWEEN SOME INSTALLATION SYSTEM COMPONENTS EXAGGERATED FOR CLARITY
2. REFER TO BD&V SUB-FRAMING LAYOUTS FOR FASTENING REQUIREMENTS
3. REFER TO SYSTEM COMPONENT LAYOUTS FOR TYPICAL FOAM TAPE, PANEL ADHESIVE, AND MOLDING FASTENING REQUIREMENTS
4. OMEGA CI INSTALLATION COMPONENTS NOT SHOWN OR ANNOTATED FOR CLARITY
5. REFER TO S-1.1 OR S-1.2 FOR TYPICAL COMPONENTS NOT ANNOTATED



www.LaminatorsInc.com

800.523.2347

WINDOW HEAD DETAIL (NFPA 285 ZONE)

1-PIECE, TIGHT-FIT MOLDING INSTALLATION SYSTEM WITH BD&V SUB-FRAMING OVER OMEGA CI

Date:
1/24/2020

Drawn By:
JJM

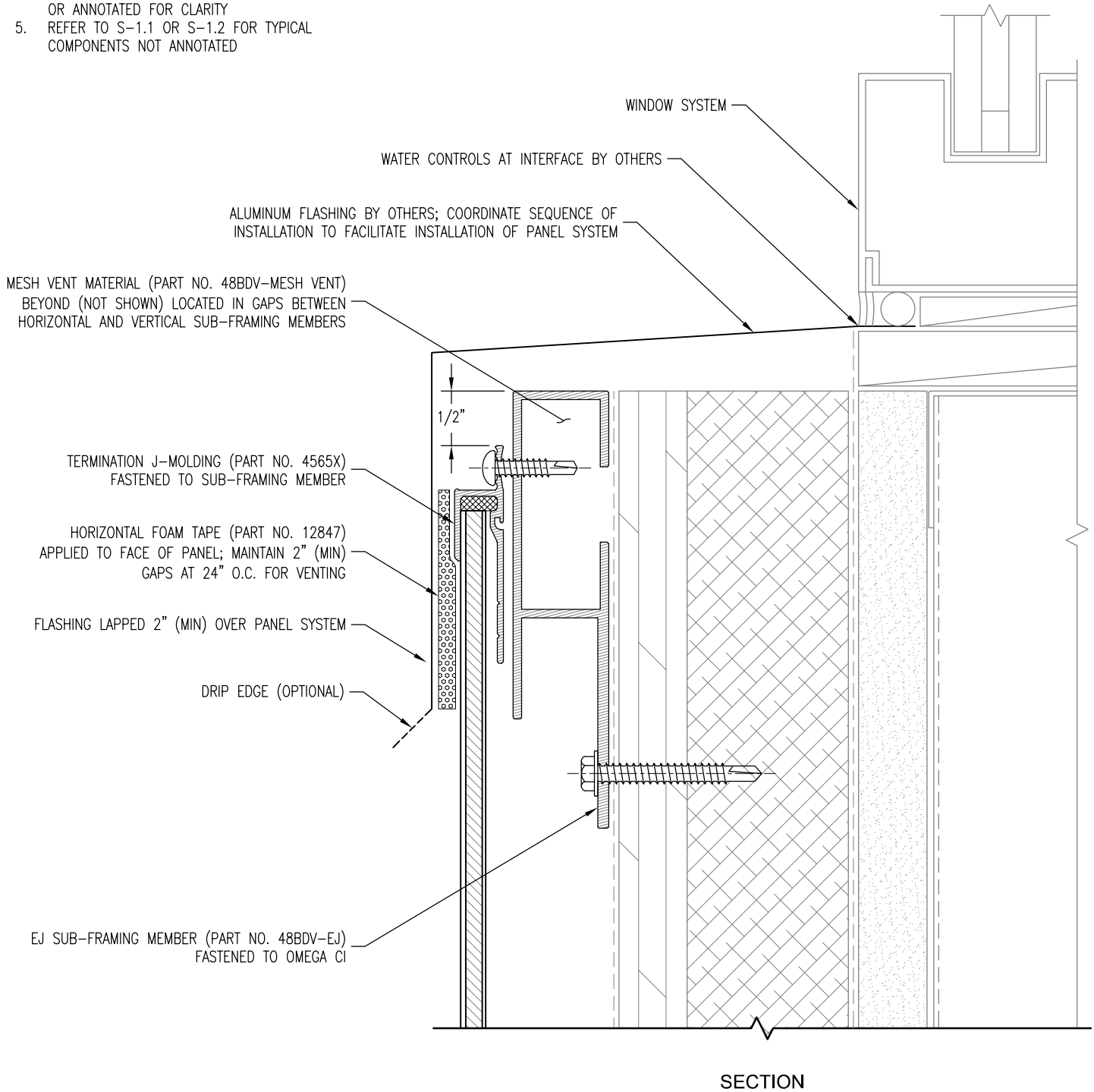
Detail Set:
1P-BDV-OCI

Dwg. No.:
S-8

Rev:
01

DETAIL NOTES:

1. SPACING SHOWN BETWEEN SOME INSTALLATION SYSTEM COMPONENTS EXAGGERATED FOR CLARITY
2. REFER TO BD&V SUB-FRAMING LAYOUTS FOR FASTENING REQUIREMENTS
3. REFER TO SYSTEM COMPONENT LAYOUTS FOR TYPICAL FOAM TAPE, PANEL ADHESIVE, AND MOLDING FASTENING REQUIREMENTS
4. OMEGA CI INSTALLATION COMPONENTS NOT SHOWN OR ANNOTATED FOR CLARITY
5. REFER TO S-1.1 OR S-1.2 FOR TYPICAL COMPONENTS NOT ANNOTATED



LAMINATORS
Composite Panel Solutions

www.LaminatorsInc.com

800.523.2347

WINDOW SILL DETAIL

1-PIECE, TIGHT-FIT MOLDING INSTALLATION SYSTEM
WITH BD&V SUB-FRAMING OVER OMEGA CI

Date:
1/24/2020

Drawn By:
JJM

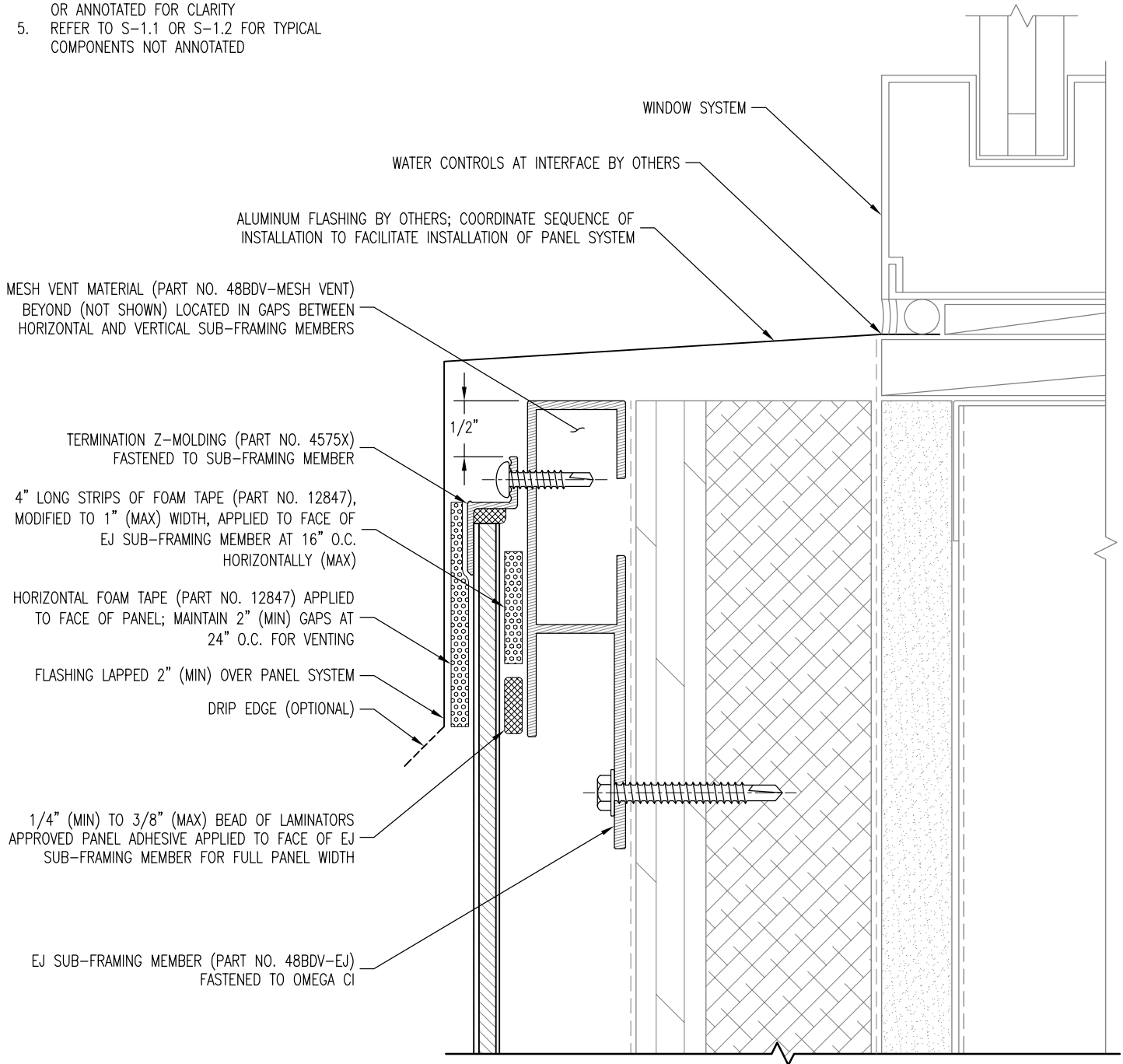
Detail Set:
1P-BDV-OCI

Dwg. No.:
S-9.1

Rev:
01

DETAIL NOTES:

1. SPACING SHOWN BETWEEN SOME INSTALLATION SYSTEM COMPONENTS EXAGGERATED FOR CLARITY
2. REFER TO BD&V SUB-FRAMING LAYOUTS FOR FASTENING REQUIREMENTS
3. REFER TO SYSTEM COMPONENT LAYOUTS FOR TYPICAL FOAM TAPE, PANEL ADHESIVE, AND MOLDING FASTENING REQUIREMENTS
4. OMEGA CI INSTALLATION COMPONENTS NOT SHOWN OR ANNOTATED FOR CLARITY
5. REFER TO S-1.1 OR S-1.2 FOR TYPICAL COMPONENTS NOT ANNOTATED



SECTION



LAMINATORS
Composite Panel Solutions

www.LaminatorsInc.com

800.523.2347

WINDOW SILL DETAIL w/ TERMINATION Z-MOLDING

1-PIECE, TIGHT-FIT MOLDING INSTALLATION SYSTEM
WITH BD&V SUB-FRAMING OVER OMEGA CI

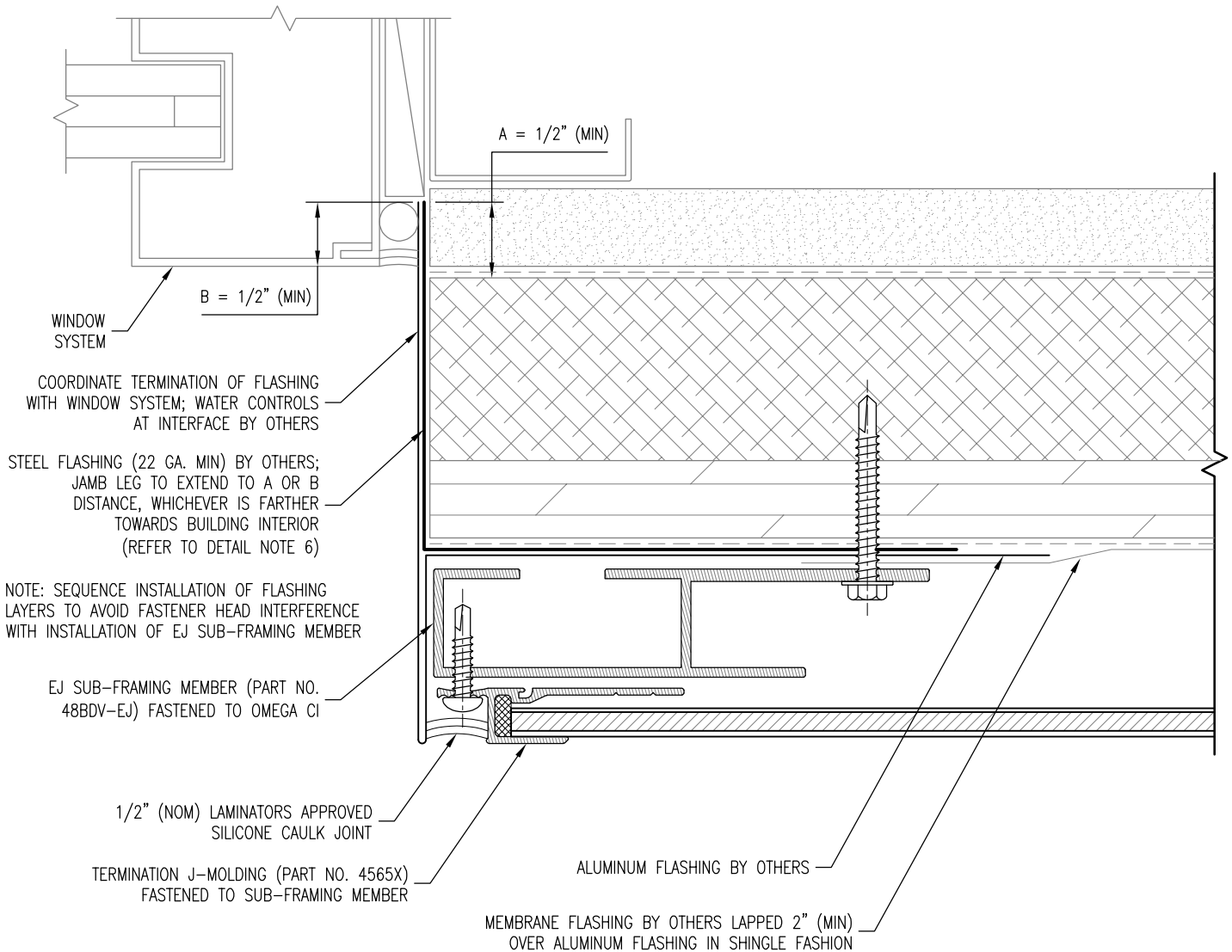
Date:
1/24/2020

Drawn By:
JJM

Detail Set:
1P-BDV-OCI

Dwg. No.:
S-9.2

Rev:
01



PLAN SECTION

DETAIL NOTES:

1. SPACING SHOWN BETWEEN SOME INSTALLATION SYSTEM COMPONENTS EXAGGERATED FOR CLARITY
2. REFER TO BD&V SUB-FRAMING LAYOUTS FOR FASTENING REQUIREMENTS
3. REFER TO SYSTEM COMPONENT LAYOUTS FOR TYPICAL FOAM TAPE, PANEL ADHESIVE, AND MOLDING FASTENING REQUIREMENTS
4. OMEGA CI INSTALLATION COMPONENTS NOT SHOWN OR ANNOTATED FOR CLARITY
5. REFER TO S-1.1 OR S-1.2 FOR TYPICAL COMPONENTS NOT ANNOTATED
6. STEEL JAMB FLASHING IS NOT REQUIRED WHEN INSTALLING OVER FIRE-RETARDANT-TREATED WOOD (FRTW) STRUCTURAL SHEATHING FOR NFPA 285 COMPLIANCE (IN TYPE III CONSTRUCTION ONLY)



www.LaminatorsInc.com

800.523.2347

WINDOW JAMB DETAIL (NFPA 285 ZONE)

1-PIECE, TIGHT-FIT MOLDING INSTALLATION SYSTEM
WITH BD&V SUB-FRAMING OVER OMEGA CI

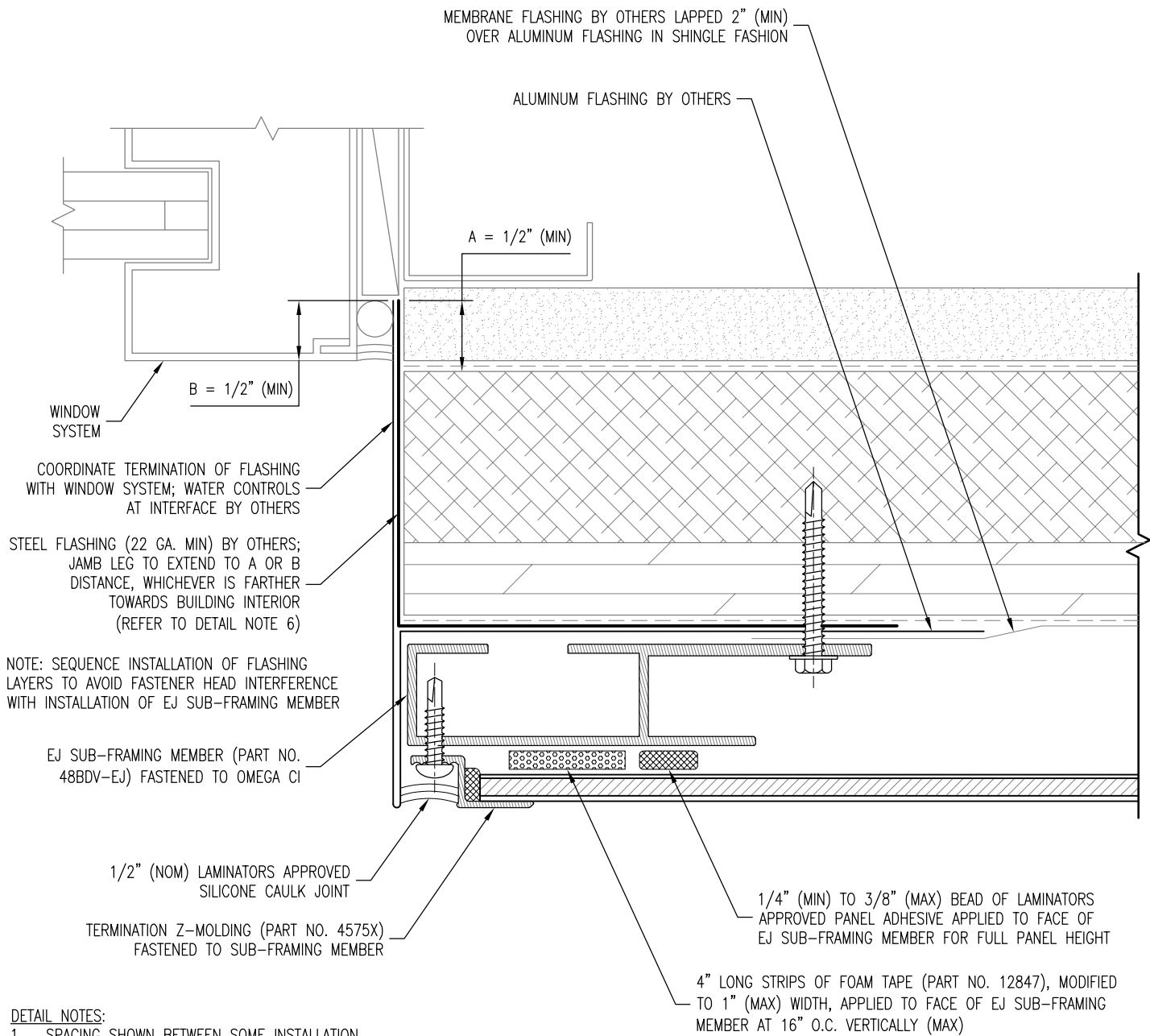
Date:
1/26/2021

Drawn By:
JJM

Detail Set:
1P-BDV-OCI

Dwg. No.:
S-10.1

Rev:
02



PLAN SECTION

DETAIL NOTES:

1. SPACING SHOWN BETWEEN SOME INSTALLATION SYSTEM COMPONENTS EXAGGERATED FOR CLARITY
2. REFER TO BD&V SUB-FRAMING LAYOUTS FOR FASTENING REQUIREMENTS
3. REFER TO SYSTEM COMPONENT LAYOUTS FOR TYPICAL FOAM TAPE, PANEL ADHESIVE, AND MOLDING FASTENING REQUIREMENTS
4. OMEGA CI INSTALLATION COMPONENTS NOT SHOWN OR ANNOTATED FOR CLARITY
5. REFER TO S-1.1 OR S-1.2 FOR TYPICAL COMPONENTS NOT ANNOTATED
6. STEEL JAMB FLASHING IS NOT REQUIRED WHEN INSTALLING OVER FIRE-RETARDANT-TREATED WOOD (FRTW) STRUCTURAL SHEATHING FOR NFPA 285 COMPLIANCE (IN TYPE III CONSTRUCTION ONLY)



LAMINATORS
Composite Panel Solutions

www.LaminatorsInc.com

800.523.2347

WINDOW JAMB DETAIL w/ TERM Z-MOLDING (NFPA 285 ZONE)

1-PIECE, TIGHT-FIT MOLDING INSTALLATION SYSTEM
WITH BD&V SUB-FRAMING OVER OMEGA CI

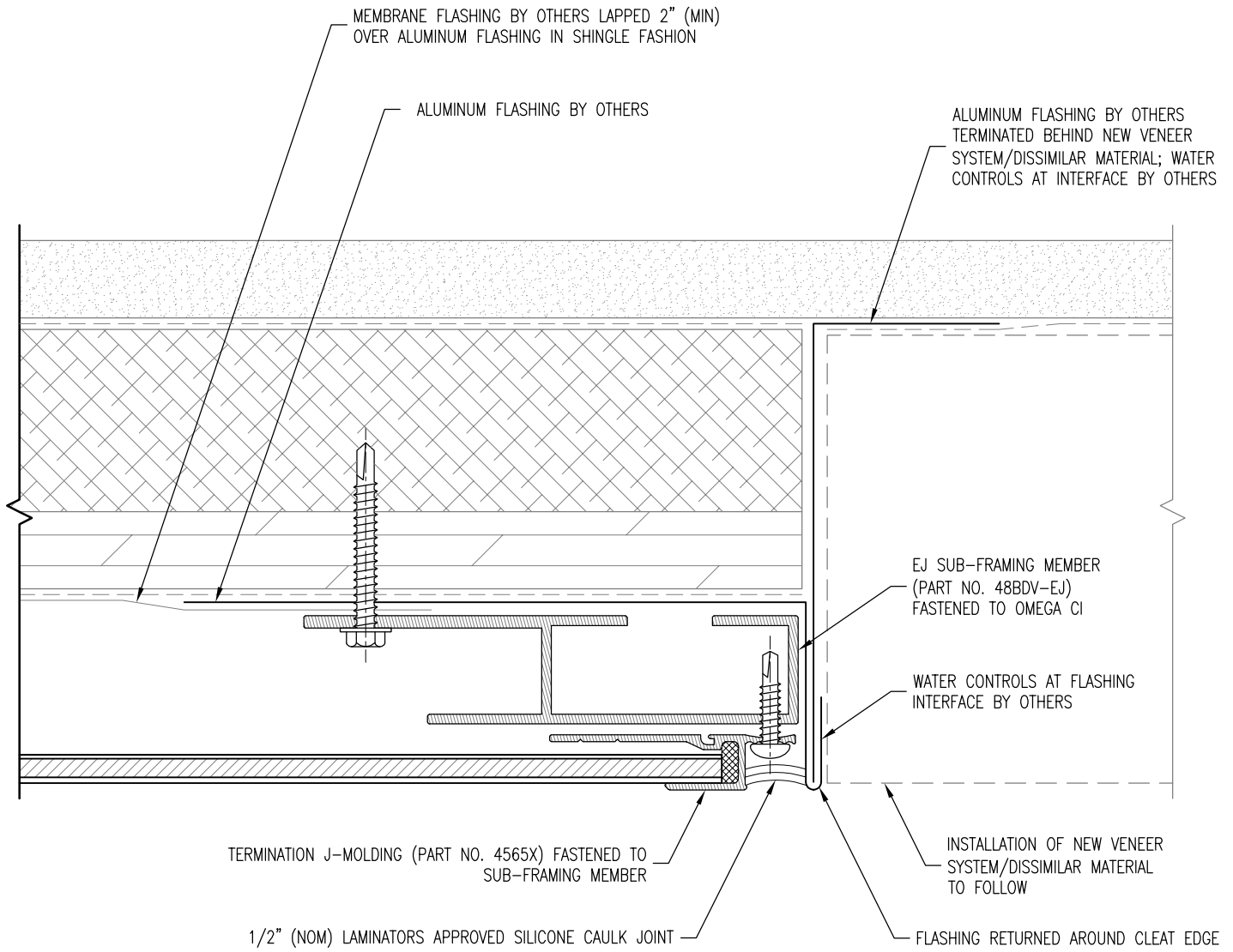
Date:
1/26/2021

Drawn By:
JJM

Detail Set:
1P-BDV-OCI

Dwg. No.:
S-10.2

Rev:
02



PLAN SECTION

DETAIL NOTES:

1. SPACING SHOWN BETWEEN SOME INSTALLATION SYSTEM COMPONENTS EXAGGERATED FOR CLARITY
2. REFER TO BD&V SUB-FRAMING LAYOUTS FOR FASTENING REQUIREMENTS
3. REFER TO SYSTEM COMPONENT LAYOUTS FOR TYPICAL FOAM TAPE, PANEL ADHESIVE, AND MOLDING FASTENING REQUIREMENTS
4. OMEGA CI INSTALLATION COMPONENTS NOT SHOWN OR ANNOTATED FOR CLARITY
5. REFER TO S-1.1 OR S-1.2 FOR TYPICAL COMPONENTS NOT ANNOTATED



LAMINATORS
Composite Panel Solutions

www.LaminatorsInc.com

800.523.2347

RIGHT VERTICAL EDGE DETAIL (ADJACENT TO NEW)

1-PIECE, TIGHT-FIT MOLDING INSTALLATION SYSTEM
WITH BD&V SUB-FRAMING OVER OMEGA CI

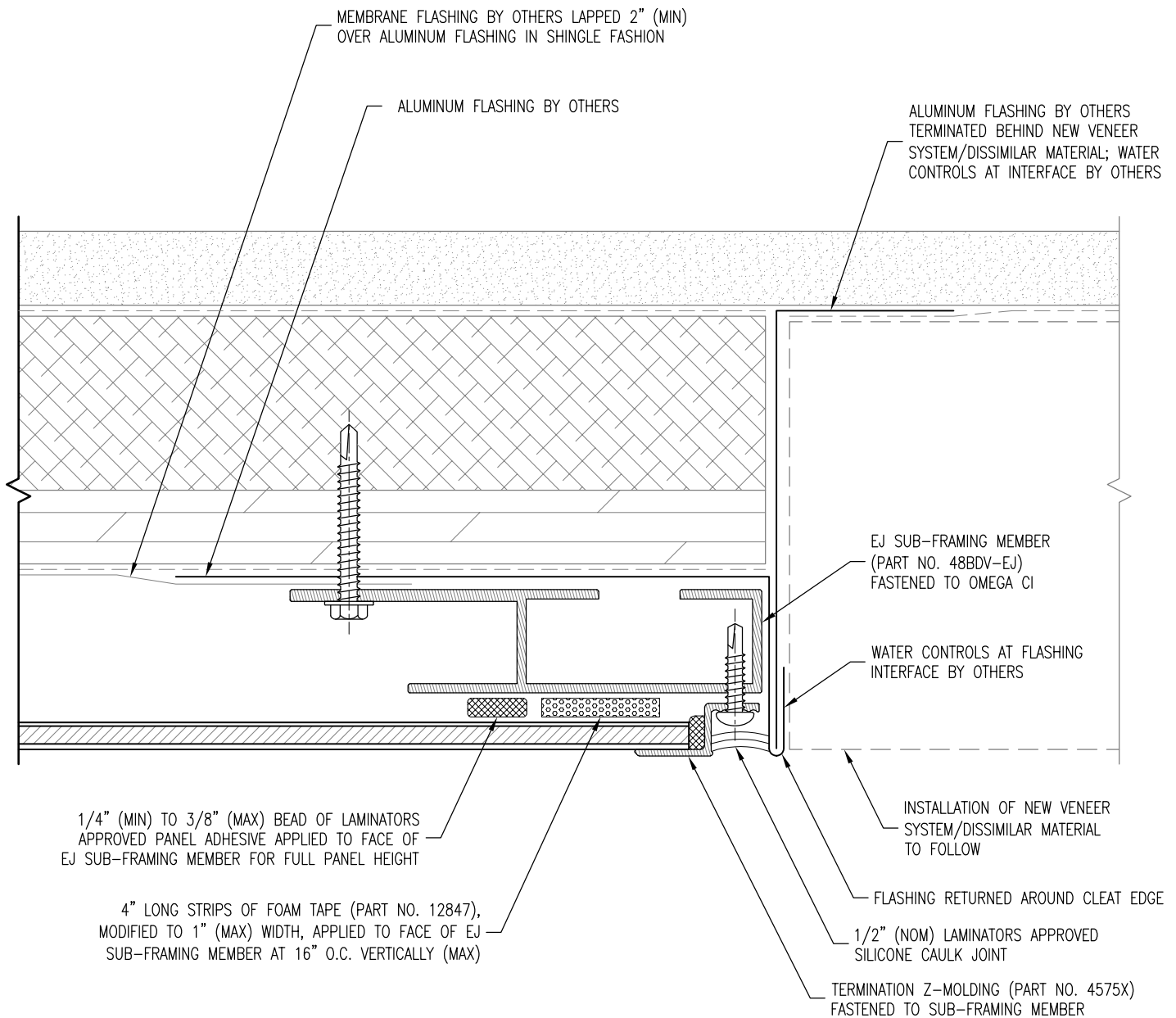
Date:
1/24/2020

Drawn By:
JJM

Detail Set:
1P-BDV-OCI

Dwg. No.:
S-11.1

Rev:
01



PLAN SECTION

DETAIL NOTES:

1. SPACING SHOWN BETWEEN SOME INSTALLATION SYSTEM COMPONENTS EXAGGERATED FOR CLARITY
2. REFER TO BD&V SUB-FRAMING LAYOUTS FOR FASTENING REQUIREMENTS
3. REFER TO SYSTEM COMPONENT LAYOUTS FOR TYPICAL FOAM TAPE, PANEL ADHESIVE, AND MOLDING FASTENING REQUIREMENTS
4. OMEGA CI INSTALLATION COMPONENTS NOT SHOWN OR ANNOTATED FOR CLARITY
5. REFER TO S-1.1 OR S-1.2 FOR TYPICAL COMPONENTS NOT ANNOTATED



www.LaminatorsInc.com

800.523.2347

RIGHT VERTICAL EDGE DETAIL w/ TERM Z (ADJ. TO NEW)

1-PIECE, TIGHT-FIT MOLDING INSTALLATION SYSTEM WITH BD&V SUB-FRAMING OVER OMEGA CI

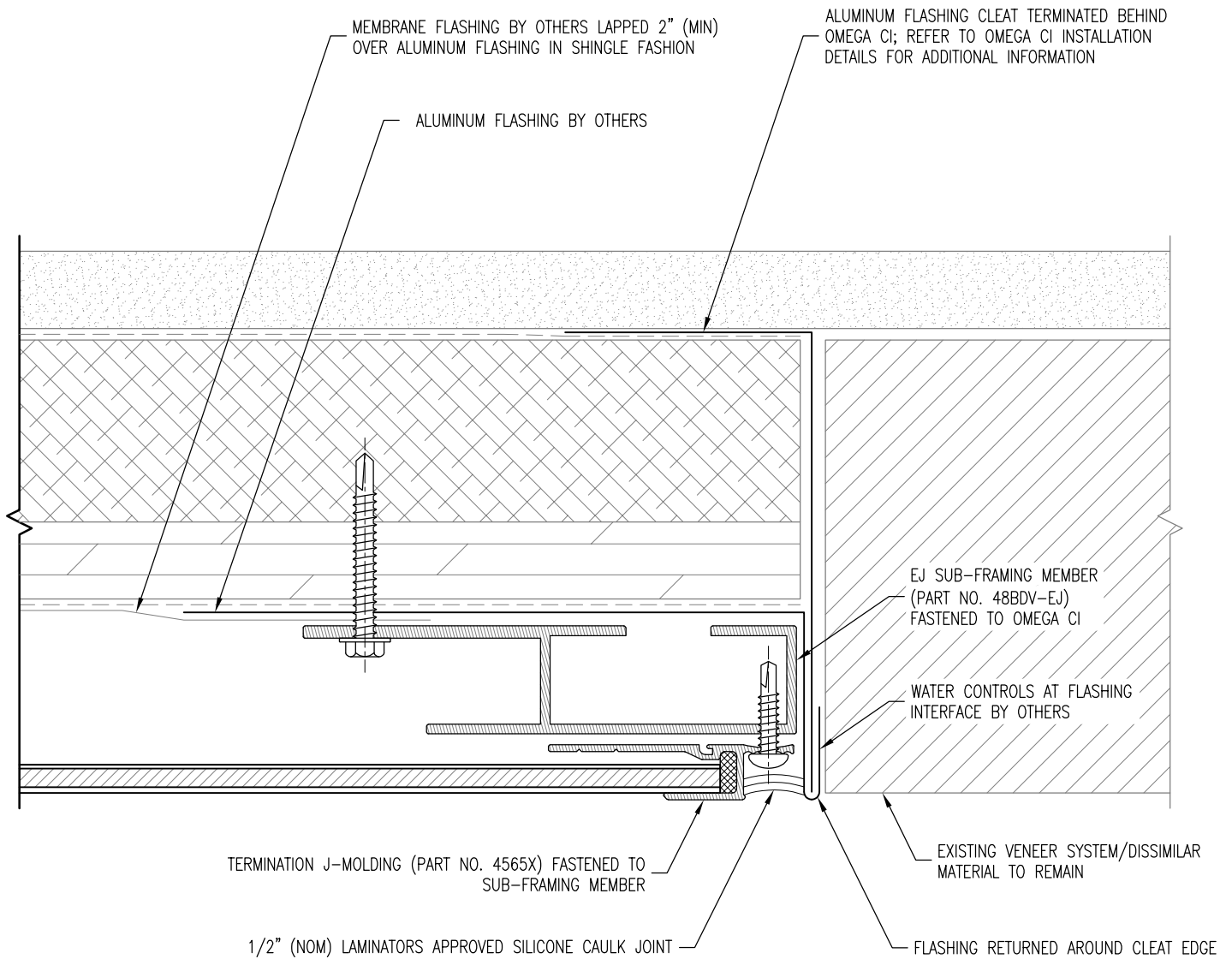
Date:
1/24/2020

Drawn By:
JJM

Detail Set:
1P-BDV-OCI

Dwg. No.:
S-11.2

Rev:
01



PLAN SECTION

DETAIL NOTES:

1. SPACING SHOWN BETWEEN SOME INSTALLATION SYSTEM COMPONENTS EXAGGERATED FOR CLARITY
2. REFER TO BD&V SUB-FRAMING LAYOUTS FOR FASTENING REQUIREMENTS
3. REFER TO SYSTEM COMPONENT LAYOUTS FOR TYPICAL FOAM TAPE, PANEL ADHESIVE, AND MOLDING FASTENING REQUIREMENTS
4. OMEGA CI INSTALLATION COMPONENTS NOT SHOWN OR ANNOTATED FOR CLARITY
5. REFER TO S-1.1 OR S-1.2 FOR TYPICAL COMPONENTS NOT ANNOTATED



www.LaminatorsInc.com

800.523.2347

RIGHT VERTICAL EDGE DETAIL (ADJACENT TO EXISTING)

1-PIECE, TIGHT-FIT MOLDING INSTALLATION SYSTEM
WITH BD&V SUB-FRAMING OVER OMEGA CI

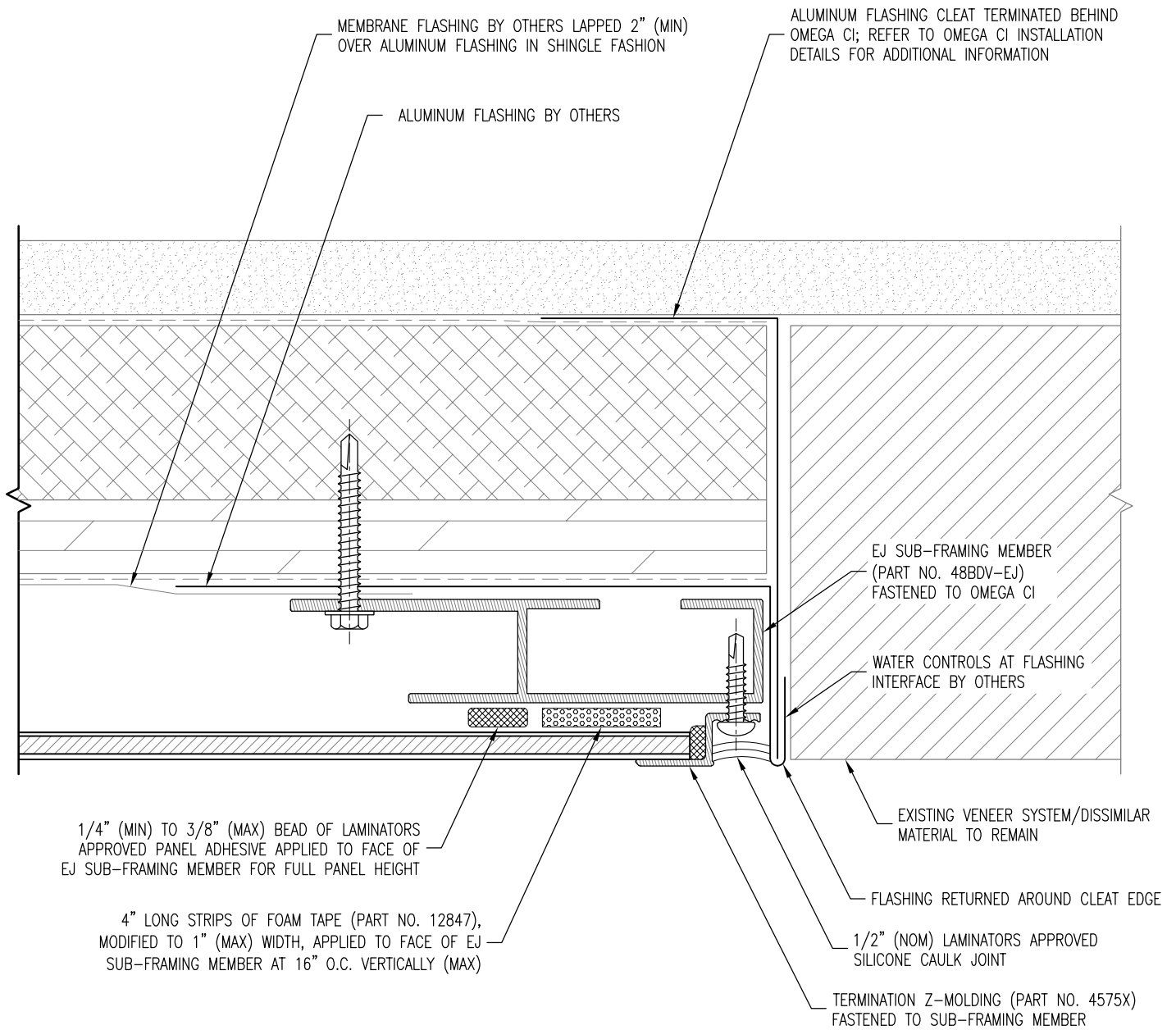
Date:
1/24/2020

Drawn By:
JJM

Detail Set:
1P-BDV-OCI

Dwg. No.:
S-11.3

Rev:
01



PLAN SECTION

DETAIL NOTES:

1. SPACING SHOWN BETWEEN SOME INSTALLATION SYSTEM COMPONENTS EXAGGERATED FOR CLARITY
2. REFER TO BD&V SUB-FRAMING LAYOUTS FOR FASTENING REQUIREMENTS
3. REFER TO SYSTEM COMPONENT LAYOUTS FOR TYPICAL FOAM TAPE, PANEL ADHESIVE, AND MOLDING FASTENING REQUIREMENTS
4. OMEGA CI INSTALLATION COMPONENTS NOT SHOWN OR ANNOTATED FOR CLARITY
5. REFER TO S-1.1 OR S-1.2 FOR TYPICAL COMPONENTS NOT ANNOTATED



LAMINATORS
Composite Panel Solutions

www.LaminatorsInc.com

800.523.2347

RIGHT VERTICAL EDGE DETAIL w/ TERM Z (ADJ. TO EXISTING)

1-PIECE, TIGHT-FIT MOLDING INSTALLATION SYSTEM
WITH BD&V SUB-FRAMING OVER OMEGA CI

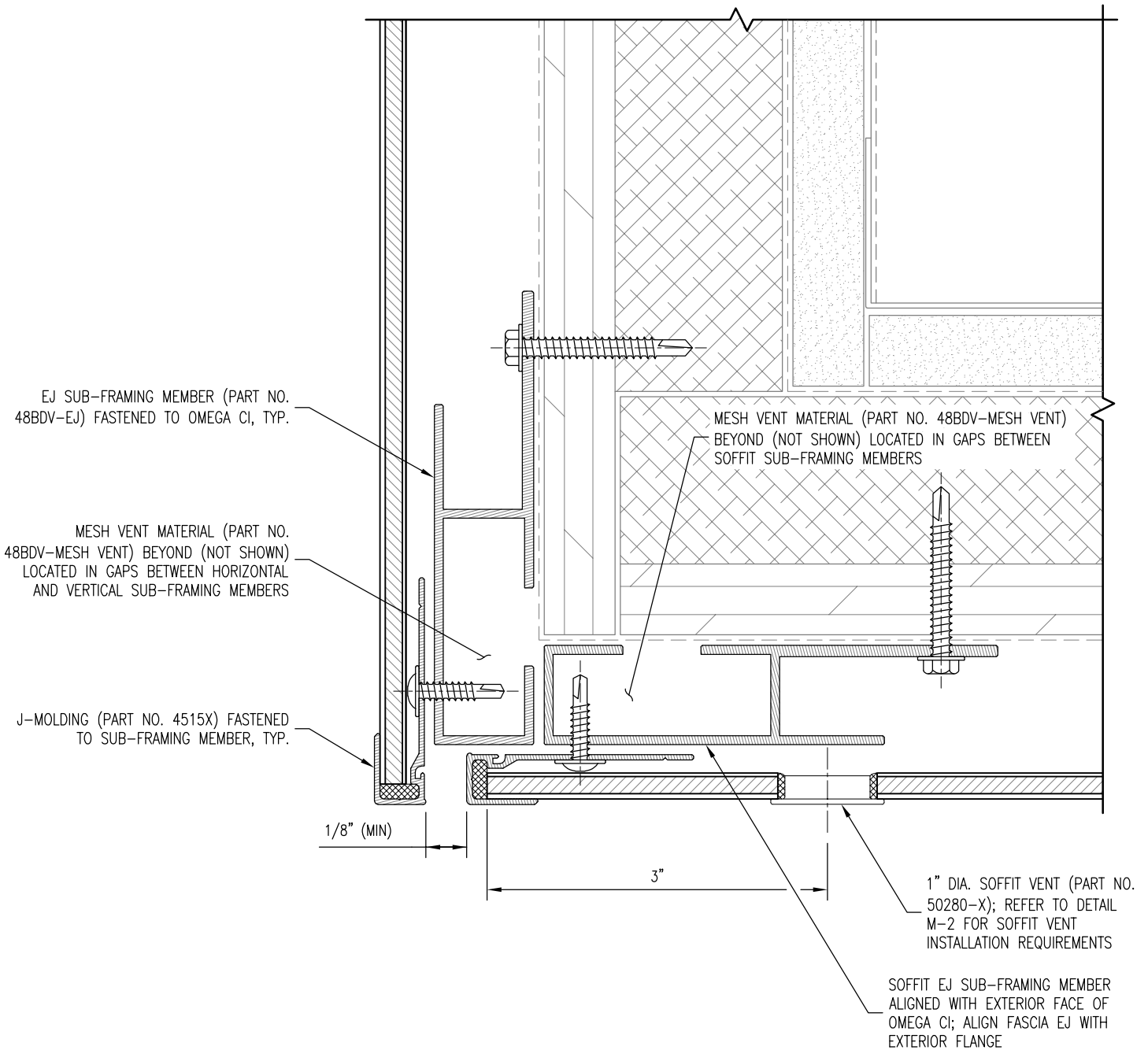
Date:
1/24/2020

Drawn By:
JJM

Detail Set:
1P-BDV-OCI

Dwg. No.:
S-11.4

Rev:
01



SECTION

DETAIL NOTES:

1. SPACING SHOWN BETWEEN SOME INSTALLATION SYSTEM COMPONENTS EXAGGERATED FOR CLARITY
2. REFER TO BD&V SUB-FRAMING LAYOUTS FOR FASTENING REQUIREMENTS
3. REFER TO SYSTEM COMPONENT LAYOUTS FOR TYPICAL FOAM TAPE, PANEL ADHESIVE, AND MOLDING FASTENING REQUIREMENTS
4. OMEGA CI INSTALLATION COMPONENTS NOT SHOWN OR ANNOTATED FOR CLARITY
5. REFER TO S-1.1 OR S-1.2 FOR TYPICAL COMPONENTS NOT ANNOTATED

MOLDING SEQUENCING NOTES:

1. BEGIN INSTALLATION AT TRANSITION
2. FASCIA INSTALLATION PROCEEDS UPWARD
3. SOFFIT INSTALLATION PROCEEDS TO THE RIGHT
4. REFER TO SYSTEM GUIDE FOR ADDITIONAL INFORMATION



LAMINATORS
Composite Panel Solutions

www.LaminatorsInc.com

800.523.2347

FASCIA-TO-SOFFIT TRANSITION DETAIL (MOLDING OPTION)

1-PIECE, TIGHT-FIT MOLDING INSTALLATION SYSTEM
WITH BD&V SUB-FRAMING OVER OMEGA CI

Date:
1/24/2020

Drawn By:
JJM

Detail Set:
1P-BDV-OCI

Dwg. No.:
S-12.1

Rev:
01

EJ SUB-FRAMING MEMBER
(PART NO. 48BDV-EJ)
FASTENED TO OMEGA CI

1/4" (MIN) TO 3/8" (MAX)
BEAD OF LAMINATORS
APPROVED PANEL ADHESIVE
APPLIED TO FACE OF EJ
SUB-FRAMING MEMBER FOR
FULL PANEL WIDTH

4" LONG STRIPS OF FOAM
TAPE (PART NO. 12847)
APPLIED TO FACE OF EJ
SUB-FRAMING MEMBER AT
16" O.C. HORIZONTALLY (MAX)

EJ SUB-FRAMING MEMBER
ALIGNED WITH EXTERIOR FACE
OF OMEGA CI

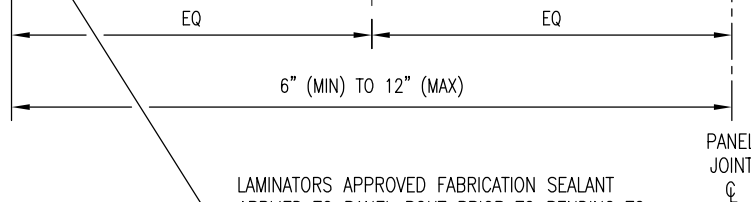
1" X 1" X 0.060" ALUMINUM
ANGLE (PART NO. 44DS-ANGLE)
INSTALLED ALONG LENGTH OF
OUTSIDE PANEL CORNER; SET
IN FABRICATION SEALANT

NOTE: SH SUB-FRAMING MEMBERS IN PERPENDICULAR
DIRECTION TO SUPPORT PANEL JOINTS BEYOND

1" DIA. SOFFIT VENT (PART NO. 50280-X);
REFER TO DETAIL M-2 FOR SOFFIT VENT
INSTALLATION REQUIREMENTS

CONTINUE SOFFIT VENT
INSTALLATION PER
DETAIL M-2 FOR ALL
HORIZONTAL PANELS

LAMINATORS APPROVED FABRICATION SEALANT
APPLIED TO PANEL ROUT PRIOR TO BENDING TO
FORM FABRICATED PANEL CORNER; REFER TO
SYSTEM GUIDE FOR ADDITIONAL INFORMATION



SECTION

DETAIL NOTES:

1. SPACING SHOWN BETWEEN SOME INSTALLATION SYSTEM COMPONENTS EXAGGERATED FOR CLARITY
2. REFER TO BD&V SUB-FRAMING LAYOUTS FOR FASTENING REQUIREMENTS
3. REFER TO SYSTEM COMPONENT LAYOUTS FOR TYPICAL FOAM TAPE, PANEL ADHESIVE, AND MOLDING FASTENING REQUIREMENTS
4. OMEGA CI INSTALLATION COMPONENTS NOT SHOWN OR ANNOTATED FOR CLARITY
5. REFER TO S-1.1 OR S-1.2 FOR TYPICAL COMPONENTS NOT ANNOTATED



www.LaminatorsInc.com

800.523.2347

FASCIA-TO-SOFFIT TRANSITION DETAIL (FABRICATED OPTION)

1-PIECE, TIGHT-FIT MOLDING INSTALLATION SYSTEM
WITH BD&V SUB-FRAMING OVER OMEGA CI

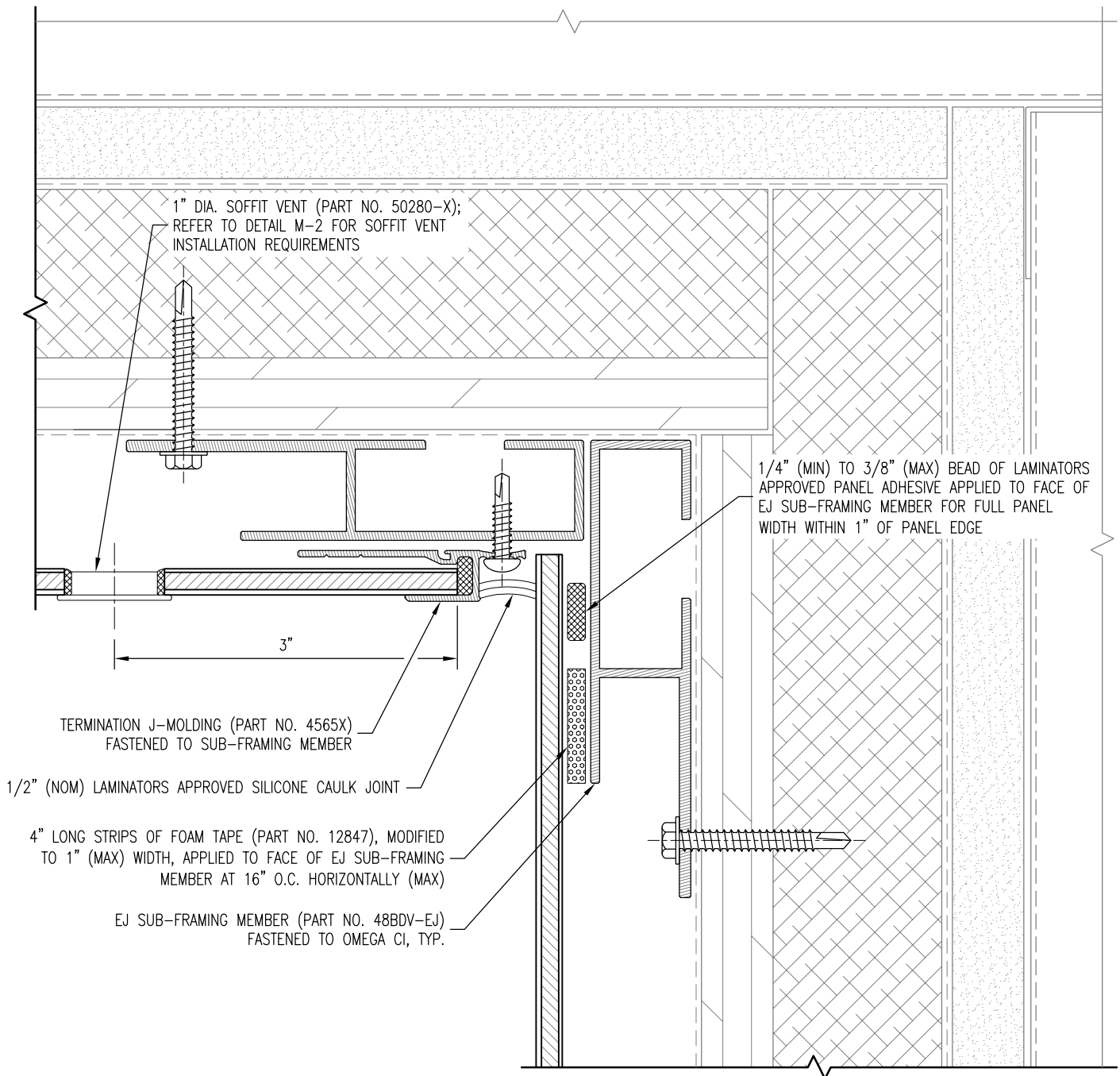
Date:
3/10/2020

Drawn By:
JJM

Detail Set:
1P-BDV-OCI

Dwg. No.:
S-12.2

Rev:
02



SECTION

DETAIL NOTES:

1. SPACING SHOWN BETWEEN SOME INSTALLATION SYSTEM COMPONENTS EXAGGERATED FOR CLARITY
2. REFER TO BD&V SUB-FRAMING LAYOUTS FOR FASTENING REQUIREMENTS
3. REFER TO SYSTEM COMPONENT LAYOUTS FOR TYPICAL FOAM TAPE, PANEL ADHESIVE, AND MOLDING FASTENING REQUIREMENTS
4. OMEGA CI INSTALLATION COMPONENTS NOT SHOWN OR ANNOTATED FOR CLARITY
5. REFER TO S-1.1 OR S-1.2 FOR TYPICAL COMPONENTS NOT ANNOTATED

MOLDING SEQUENCING NOTES:

1. COMPLETE INSTALLATION OF WALL PANEL PRIOR TO ADJACENT SOFFIT PANEL
2. REFER TO SYSTEM GUIDE FOR ADDITIONAL INFORMATION



LAMINATORS
Composite Panel Solutions

www.LaminatorsInc.com

800.523.2347

SOFFIT-TO-WALL TRANSITION DETAIL (MOLDING OPTION)

1-PIECE, TIGHT-FIT MOLDING INSTALLATION SYSTEM WITH BD&V SUB-FRAMING OVER OMEGA CI

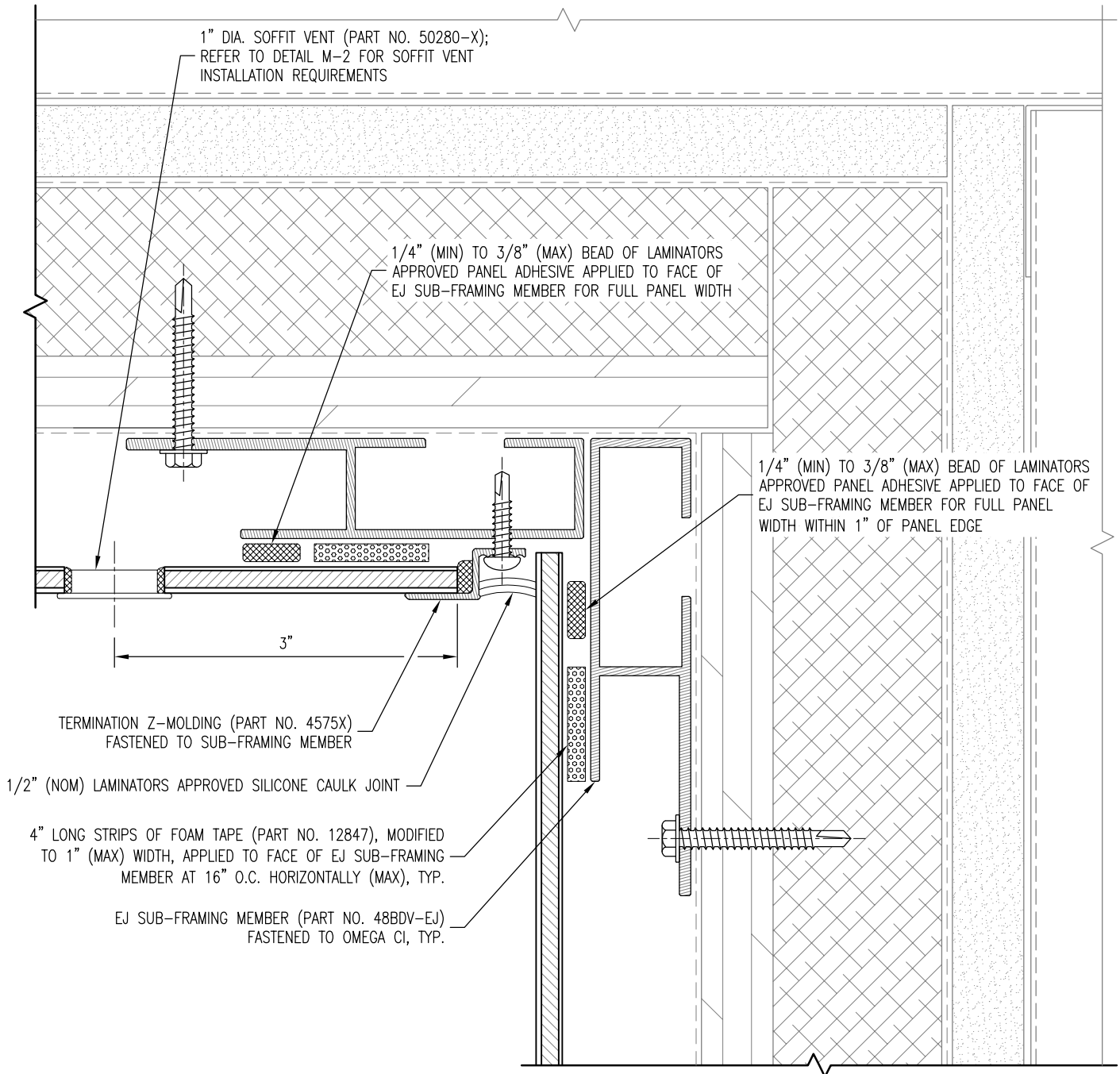
Date:
1/24/2020

Drawn By:
JJM

Detail Set:
1P-BDV-OCI

Dwg. No.:
S-13.1

Rev:
01



1/4" (MIN) TO 3/8" (MAX) BEAD OF LAMINATORS APPROVED PANEL ADHESIVE APPLIED TO FACE OF EJ SUB-FRAMING MEMBER FOR FULL PANEL WIDTH WITHIN 1" OF PANEL EDGE

1" DIA. SOFFIT VENT (PART NO. 50280-X); REFER TO DETAIL M-2 FOR SOFFIT VENT INSTALLATION REQUIREMENTS

1/4" (MIN) TO 3/8" (MAX) BEAD OF LAMINATORS APPROVED PANEL ADHESIVE APPLIED TO FACE OF EJ SUB-FRAMING MEMBER FOR FULL PANEL WIDTH

TERMINATION Z-MOLDING (PART NO. 4575X) FASTENED TO SUB-FRAMING MEMBER

1/2" (NOM) LAMINATORS APPROVED SILICONE CAULK JOINT

4" LONG STRIPS OF FOAM TAPE (PART NO. 12847), MODIFIED TO 1" (MAX) WIDTH, APPLIED TO FACE OF EJ SUB-FRAMING MEMBER AT 16" O.C. HORIZONTALLY (MAX), TYP.

EJ SUB-FRAMING MEMBER (PART NO. 48BDV-EJ) FASTENED TO OMEGA CI, TYP.

3"

SECTION

DETAIL NOTES:

1. SPACING SHOWN BETWEEN SOME INSTALLATION SYSTEM COMPONENTS EXAGGERATED FOR CLARITY
2. REFER TO BD&V SUB-FRAMING LAYOUTS FOR FASTENING REQUIREMENTS
3. REFER TO SYSTEM COMPONENT LAYOUTS FOR TYPICAL FOAM TAPE, PANEL ADHESIVE, AND MOLDING FASTENING REQUIREMENTS
4. OMEGA CI INSTALLATION COMPONENTS NOT SHOWN OR ANNOTATED FOR CLARITY
5. REFER TO S-1.1 OR S-1.2 FOR TYPICAL COMPONENTS NOT ANNOTATED

MOLDING SEQUENCING NOTES:

1. COMPLETE INSTALLATION OF WALL PANEL PRIOR TO ADJACENT SOFFIT PANEL
2. REFER TO SYSTEM GUIDE FOR ADDITIONAL INFORMATION



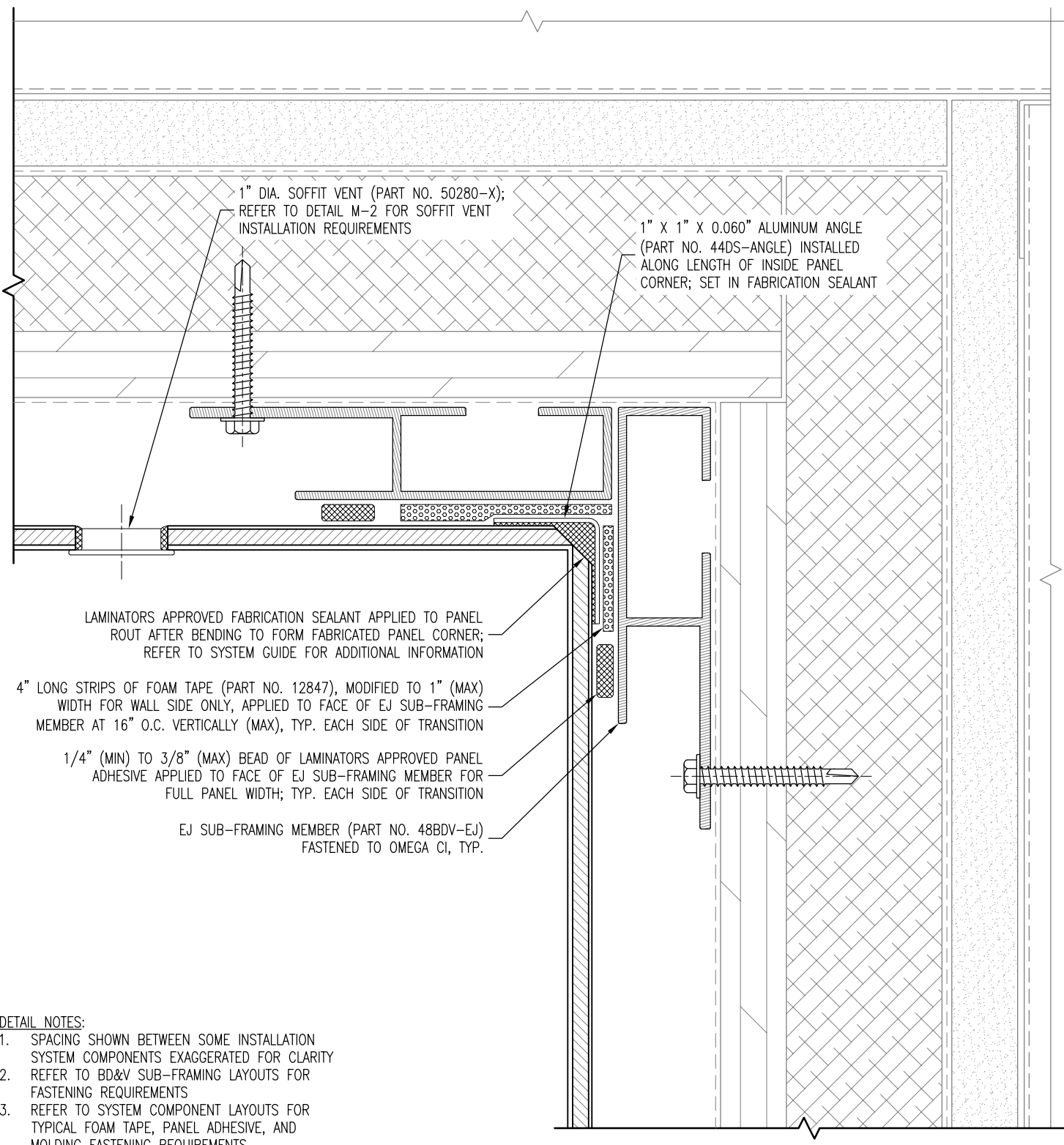
www.LaminatorsInc.com

800.523.2347

SOFFIT-TO-WALL TRANSITION DETAIL (TERM Z-MOLDING)

1-PIECE, TIGHT-FIT MOLDING INSTALLATION SYSTEM WITH BD&V SUB-FRAMING OVER OMEGA CI

Date: 1/24/2020	Drawn By: JJM	Detail Set: 1P-BDV-OCI	Dwg. No.: S-13.2	Rev: 01
--------------------	------------------	---------------------------	---------------------	------------



1" DIA. SOFFIT VENT (PART NO. 50280-X); REFER TO DETAIL M-2 FOR SOFFIT VENT INSTALLATION REQUIREMENTS

1" X 1" X 0.060" ALUMINUM ANGLE (PART NO. 44DS-ANGLE) INSTALLED ALONG LENGTH OF INSIDE PANEL CORNER; SET IN FABRICATION SEALANT

LAMINATORS APPROVED FABRICATION SEALANT APPLIED TO PANEL ROUT AFTER BENDING TO FORM FABRICATED PANEL CORNER; REFER TO SYSTEM GUIDE FOR ADDITIONAL INFORMATION

4" LONG STRIPS OF FOAM TAPE (PART NO. 12847), MODIFIED TO 1" (MAX) WIDTH FOR WALL SIDE ONLY, APPLIED TO FACE OF EJ SUB-FRAMING MEMBER AT 16" O.C. VERTICALLY (MAX), TYP. EACH SIDE OF TRANSITION

1/4" (MIN) TO 3/8" (MAX) BEAD OF LAMINATORS APPROVED PANEL ADHESIVE APPLIED TO FACE OF EJ SUB-FRAMING MEMBER FOR FULL PANEL WIDTH; TYP. EACH SIDE OF TRANSITION

EJ SUB-FRAMING MEMBER (PART NO. 48BDV-EJ) FASTENED TO OMEGA CI, TYP.

SECTION

DETAIL NOTES:

1. SPACING SHOWN BETWEEN SOME INSTALLATION SYSTEM COMPONENTS EXAGGERATED FOR CLARITY
2. REFER TO BD&V SUB-FRAMING LAYOUTS FOR FASTENING REQUIREMENTS
3. REFER TO SYSTEM COMPONENT LAYOUTS FOR TYPICAL FOAM TAPE, PANEL ADHESIVE, AND MOLDING FASTENING REQUIREMENTS
4. OMEGA CI INSTALLATION COMPONENTS NOT SHOWN OR ANNOTATED FOR CLARITY
5. REFER TO S-1.1 OR S-1.2 FOR TYPICAL COMPONENTS NOT ANNOTATED



LAMINATORS
Composite Panel Solutions

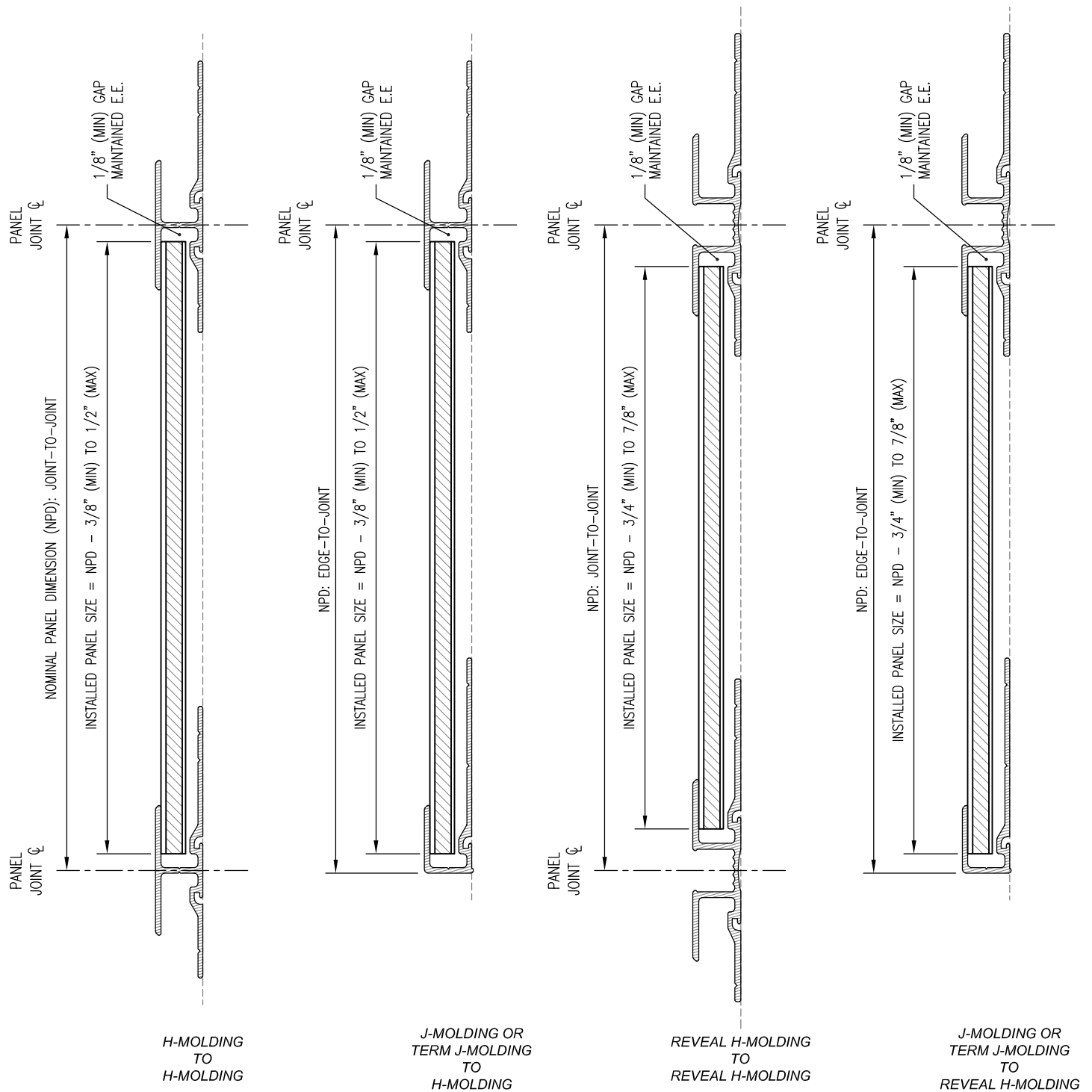
www.LaminatorsInc.com

800.523.2347

SOFFIT-TO-WALL TRANSITION DETAIL (FABRICATED OPTION)

1-PIECE, TIGHT-FIT MOLDING INSTALLATION SYSTEM WITH BD&V SUB-FRAMING OVER OMEGA CI

Date: 3/10/2020	Drawn By: JJM	Detail Set: 1P-BDV-OCI	Dwg. No.: S-13.3	Rev: 02
--------------------	------------------	---------------------------	---------------------	------------



DETAIL NOTES:

1. PANEL SIZING GUIDELINES ASSUME TYPICAL INSTALLATION CONDITIONS WITH A TEMPERATURE CHANGE OF UP TO $\pm 100^{\circ}\text{F}$ AT THE SURFACE OF ALUMINUM
2. CONTACT LAMINATORS TECHNICAL SUPPORT FOR PANEL SIZING RECOMMENDATIONS RELATED TO PROJECT-SPECIFIC COLD OR HOT WEATHER INSTALLATIONS
3. SILICONE CAULK NOT SHOWN IN MOLDINGS FOR CLARITY



LAMINATORS
Composite Panel Solutions

www.LaminatorsInc.com

800.523.2347

PANEL SIZING GUIDELINES

1-PIECE, TIGHT-FIT MOLDING INSTALLATION SYSTEM
WITH BD&V SUB-FRAMING OVER OMEGA CI

Date:
10/14/2019

Drawn By:
JJM

Detail Set:
1P-BDV-OCI

Dwg. No.:
M-1

Rev:
01

STEP 1: DRILL 7/8" DIA. HOLE IN PANEL

SUBSTRATE SIDE

7/8"

STEP 2: EDGE SEAL THE PERIMETER OF THE HOLE USING LAMINATORS APPROVED SILICONE CAULK OR FABRICATION SEALANT PRIOR TO INSERTING THE VENT (CAULK/SEALANT MUST BE PUSHED INTO THE FLUTES OF THE PANEL CORE)



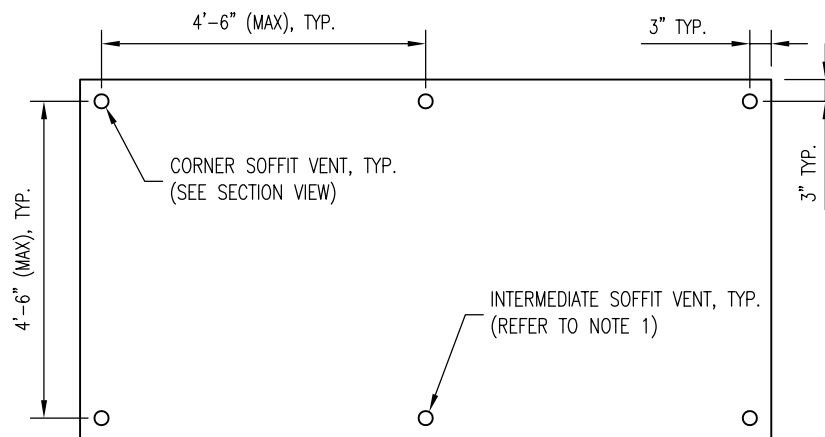
STEP 3: INSTALL BEAD OF LAMINATORS APPROVED SILICONE CAULK OR FABRICATION SEALANT AROUND THE FLANGE OF THE VENT PRIOR TO INSERTING INTO THE HOLE

6mm OMEGA-LITE PANEL, TYP.

STEP 4: INSERT THE VENT INTO THE HOLE WITH A SLIGHT TWISTING MOTION FOR COMPLETE COVERAGE OF THE CAULK/SEALANT AND ADHESION TO BOTH THE PANEL AND THE VENT

1" FACE DIA. (3/4" INSERT DIA.)
SOFFIT VENT (PART NO. 50280-X)

SECTION



OMEGA-LITE SOFFIT PANEL

DETAIL NOTES:

1. FOR PANEL EDGE DIMENSIONS LARGER THAN 5'-0", INTERMEDIATE VENTS SHALL BE INSTALLED WITH EQUAL SPACING
2. FOR PANEL EDGE DIMENSIONS 12" AND SMALLER, A SINGLE ROW OF VENTS MAY BE INSTALLED ALONG THE CENTERLINE OF THE PANEL IN THE LONGER DIRECTION (IN PLACE OF TWO ROWS AS SHOWN ABOVE)
3. CONTACT LAMINATORS TECHNICAL SUPPORT FOR ADDITIONAL INFORMATION ON REQUIRED SOFFIT VENT INSTALLATION FOR UNIQUE PROJECT-SPECIFIC PANEL GEOMETRIES



www.LaminatorsInc.com

800.523.2347

SOFFIT VENT INSTALLATION REQUIREMENTS

1-PIECE, TIGHT-FIT MOLDING INSTALLATION SYSTEM
WITH BD&V SUB-FRAMING OVER OMEGA CI

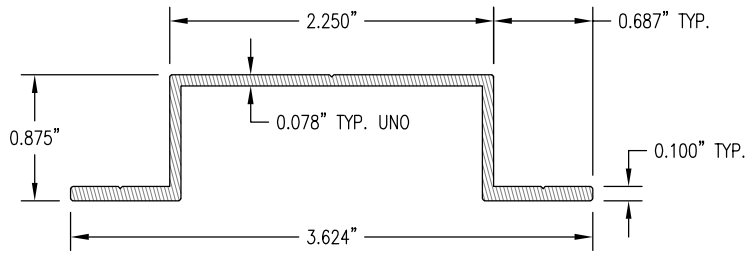
Date:
5/1/2019

Drawn By:
JJM

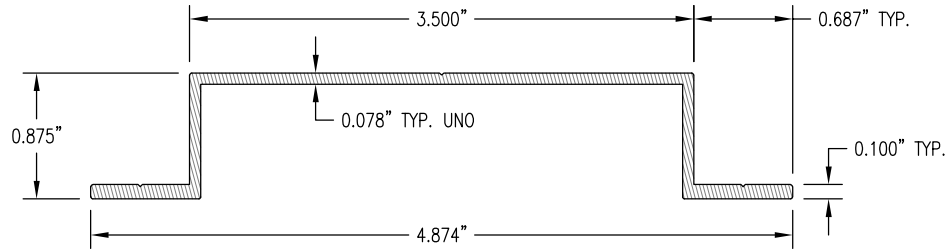
Detail Set:
1P-BDV-OCI

Dwg. No.:
M-2

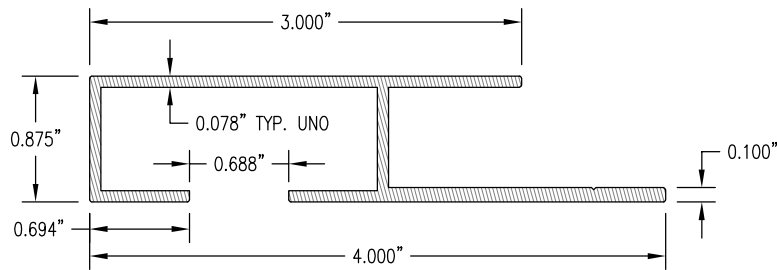
Rev:
00



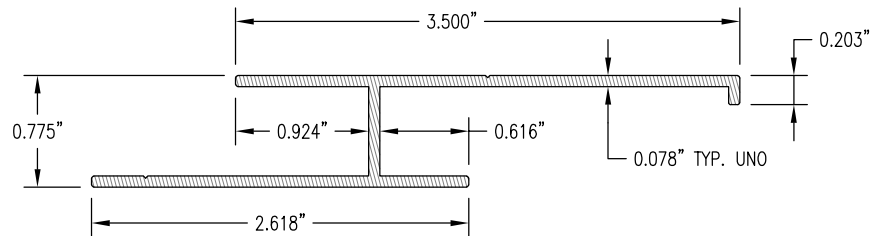
AH SUB-FRAMING MEMBER
PART NO. 48BDV-AH



SH SUB-FRAMING MEMBER
PART NO. 48BDV-SH



EJ SUB-FRAMING MEMBER
PART NO. 48BDV-EJ



FV SUB-FRAMING MEMBER
PART NO. 48BDV-FV



LAMINATORS
Composite Panel Solutions

www.LaminatorsInc.com

800.523.2347

BD&V SUB-FRAMING MEMBER PROFILES

1-PIECE, TIGHT-FIT MOLDING INSTALLATION SYSTEM
WITH BD&V SUB-FRAMING OVER OMEGA CI

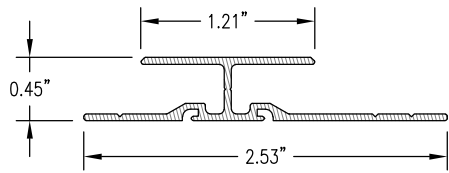
Date:
3/18/2022

Drawn By:
JJM

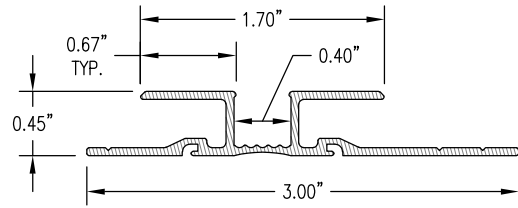
Detail Set:
1P-BDV-OCI

Dwg. No.:
M-3

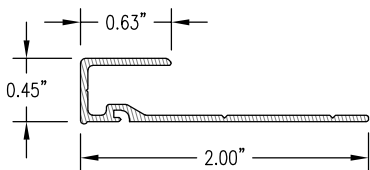
Rev:
01



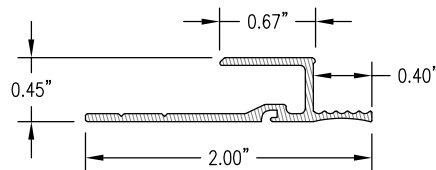
H-MOLDING
PART NO. 4505X



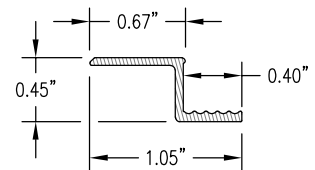
REVEAL H-MOLDING
PART NO. 4595X



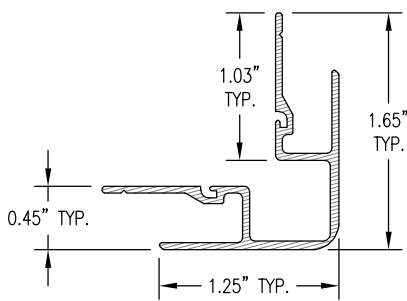
J-MOLDING
PART NO. 4515X



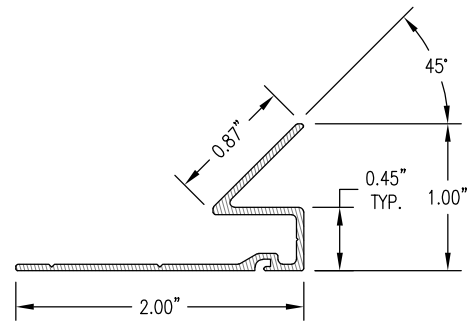
TERMINATION J-MOLDING
PART NO. 4565X



TERMINATION Z-MOLDING
PART NO. 4575X



OUTSIDE CORNER MOLDING
PART NO. 4535X



INSIDE CORNER MOLDING
PART NO. 4525X



LAMINATORS
Composite Panel Solutions

www.LaminatorsInc.com

800.523.2347

MOLDING PROFILES

1-PIECE, TIGHT-FIT MOLDING INSTALLATION SYSTEM
WITH BD&V SUB-FRAMING OVER OMEGA CI

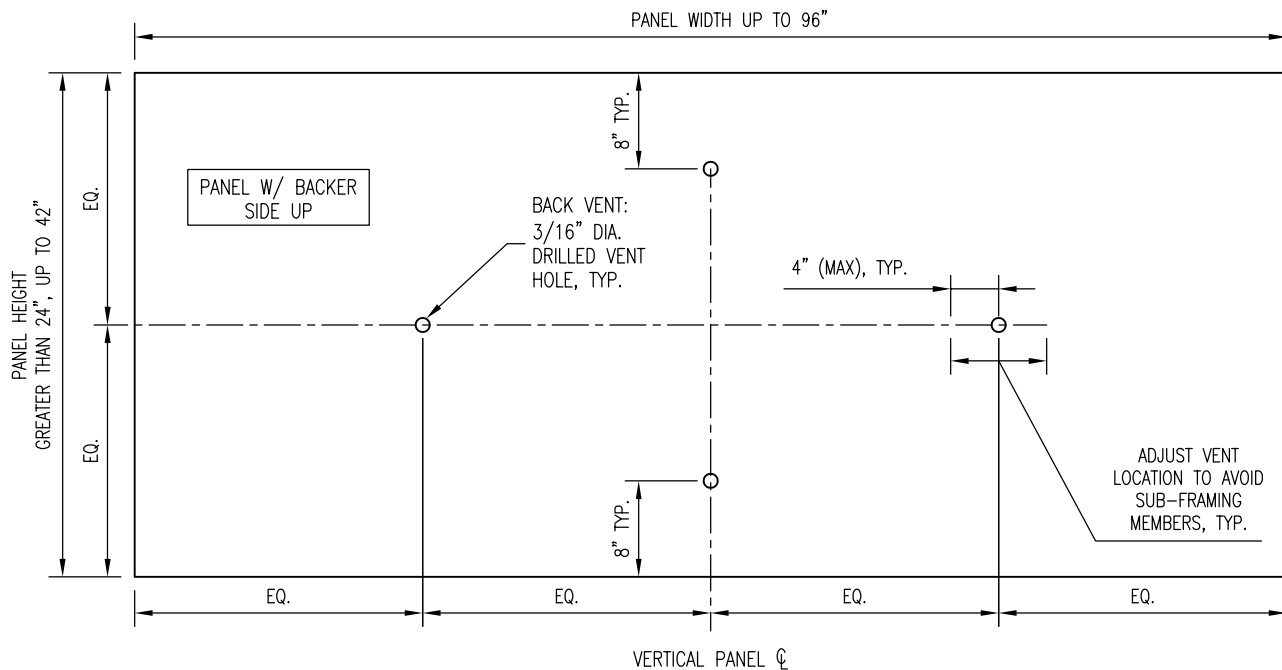
Date:
10/14/2019

Drawn By:
JJM

Detail Set:
1P-BDV-OCI

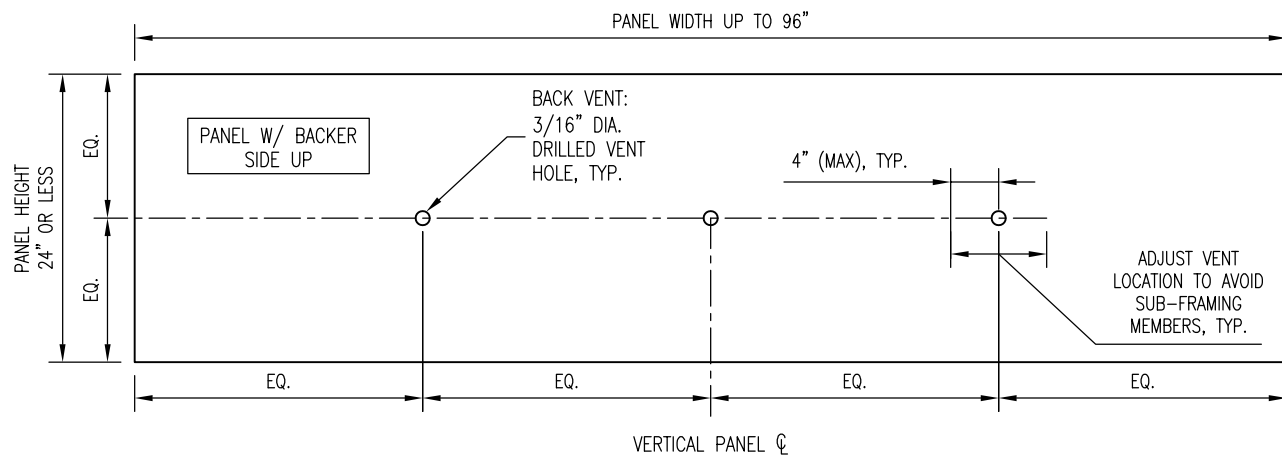
Dwg. No.:
M-4

Rev:
01



FOR PANEL WIDTHS GREATER THAN 96": (6) TOTAL BACK VENTS REQUIRED (1 ROW OF 4, 1 COLUMN OF 2)

- EQUALLY SPACE BACK VENTS ALONG PANEL WIDTH
- MAINTAIN (2) BACK VENTS AT VERTICAL PANEL CENTERLINE AS SHOWN; ADJUST VENT LOCATIONS (IF REQUIRED) TO AVOID SUB-FRAMING MEMBERS



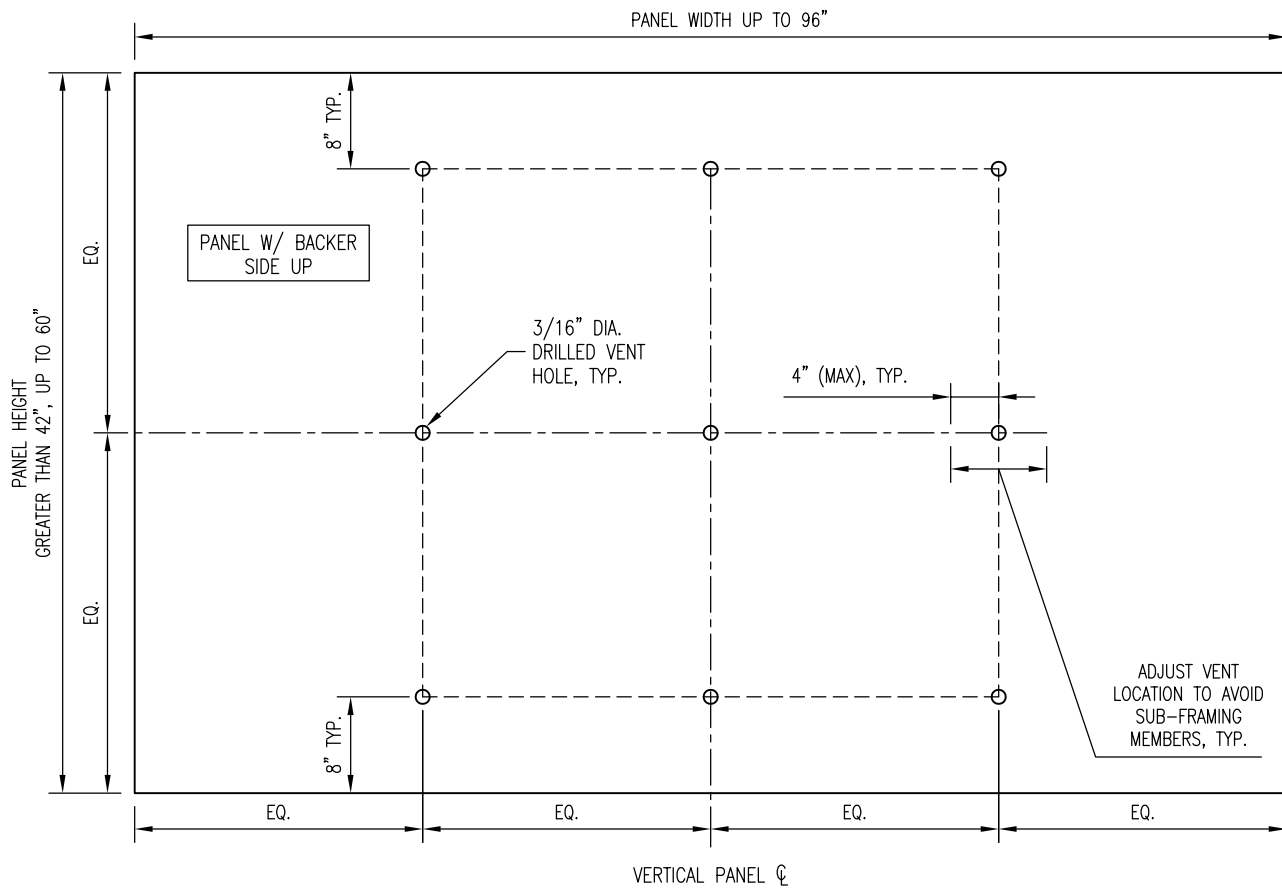
FOR PANEL WIDTHS GREATER THAN 96": PROVIDE (5) TOTAL BACK VENTS (1 ROW OF 5)

- EQUALLY SPACE VENTS ALONG PANEL WIDTH
- MAINTAIN (1) BACK VENT AT VERTICAL PANEL CENTERLINE AS SHOWN; ADJUST VENT LOCATIONS (IF REQUIRED) TO AVOID SUB-FRAMING MEMBERS

DETAIL NOTES:

1. DRILL BACK VENTS USING 3/16" DIA. DRILL BIT
2. DEPTH OF DRILLED VENT NOT TO EXCEED 1/8"; DRILL BIT TO PENETRATE PANEL BACKER METAL AND EXTEND THROUGH OUTER CORE SKIN INTO PANEL FLUTES





FOR PANEL WIDTHS GREATER THAN 96": (15) TOTAL BACK VENTS REQUIRED (3 ROWS OF 5)

- EQUALLY SPACE BACK VENTS ALONG PANEL WIDTH
- MAINTAIN (3) BACK VENTS AT VERTICAL PANEL CENTERLINE AS SHOWN; ADJUST VENT LOCATIONS (IF REQUIRED) TO AVOID SUB-FRAMING MEMBERS

DETAIL NOTES:

1. DRILL BACK VENTS USING 3/16" DIA. DRILL BIT
2. DEPTH OF DRILLED VENT NOT TO EXCEED 1/8"; DRILL BIT TO PENETRATE PANEL BACKER METAL AND EXTEND THROUGH OUTER CORE SKIN INTO PANEL FLUTES



LAMINATORS
Composite Panel Solutions

www.LaminatorsInc.com

800.523.2347

PANEL BACK VENTING REQUIREMENTS (NFPA 285) - 2 OF 2

1-PIECE, TIGHT-FIT MOLDING INSTALLATION SYSTEM
WITH BD&V SUB-FRAMING OVER OMEGA CI

Date:
6/12/2019

Drawn By:
JJM

Detail Set:
1P-BDV-OCI

Dwg. No.:
M-5.2

Rev:
00