

IMPORTANT NOTICE

The following document is intended for support of Laminators Legacy Installation Systems, which are currently in-process of being phased out. If you are in the design phase of your project, please refer to Laminators NEW and IMPROVED Field-Fabricated Installation Systems (1-Piece, Tight-Fit Molding, Clip & Caulk) with Omega-Lite® ACM and Omega CI® rigid insulation panels.

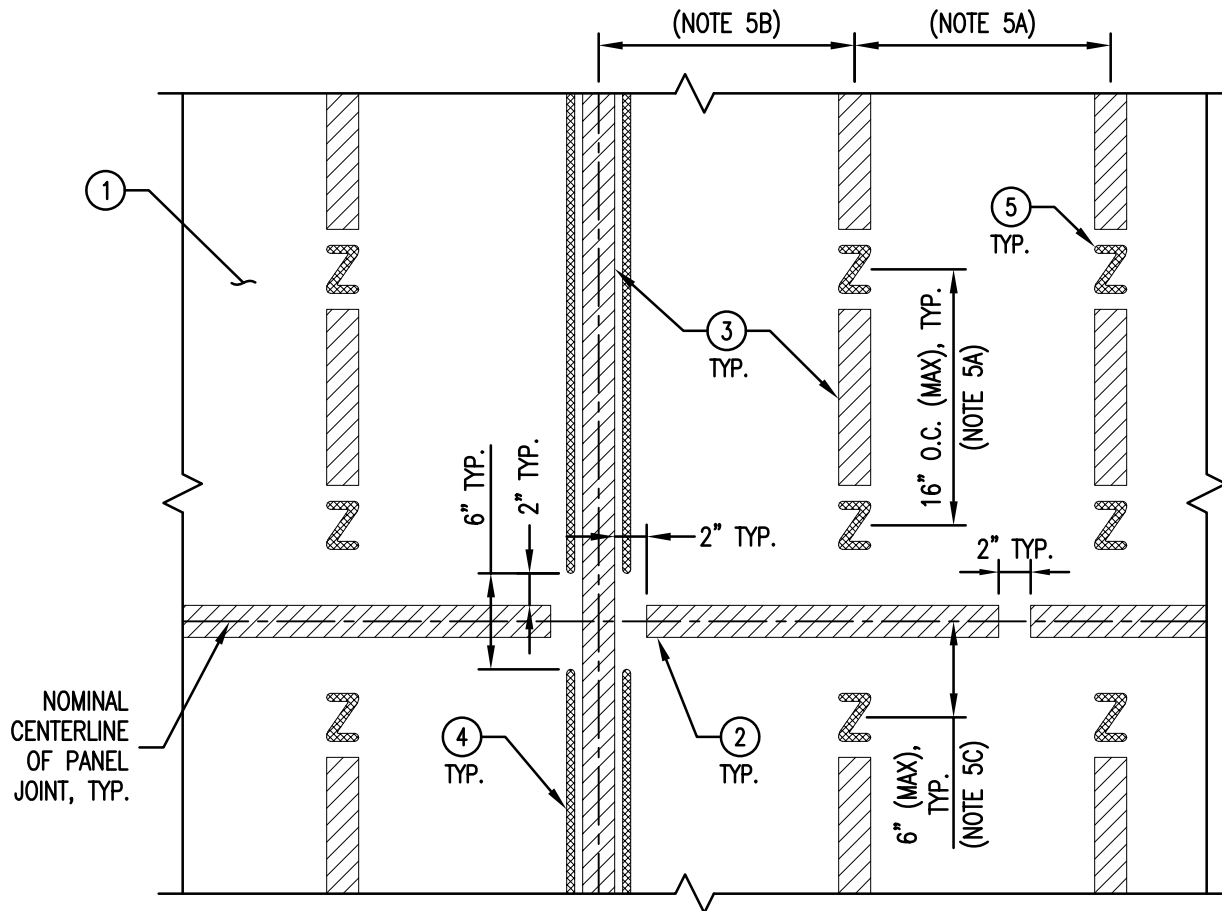
The following document is NOT comprehensive for design, bidding, or installation when used in isolation. Please refer to all related documents in their entirety for complete information regarding this ACM panel system. Such documents include, but may not be limited to, Technical Guides, Architectural Color Chart, Approved Materials List, Systems Guides, Technical Bulletins, Technical Data Sheets, CAD Drawings, Specifications, and Submittals. Visit LaminatorsInc.com for information on the latest documents regarding this panel system.

To consult directly with one of our Professional Engineers regarding our ACM panel systems, contact Laminators Technical Support between the hours of 8:00am – 5:00pm EST:

800.523.2347

LaminatorsInc.com

engineering@laminatorsinc.com



PARTIAL SYSTEM ELEVATION
(PANELS NOT SHOWN)

- ① 5/8" EXTERIOR GRADE, PLYWOOD SHEATHING WITH LAMINATORS APPROVED AIR AND WATER BARRIER
- ② HORIZONTAL FOAM TAPE APPLIED ALONG HORIZONTAL PANEL JOINTS WITH 2" MIN GAPS FOR VENTING AND DRAINAGE AT 24" O.C. AND AT INTERFACES WITH CONTINUOUS VERTICAL FOAM TAPE
- ③ CONTINUOUS VERTICAL FOAM TAPE APPLIED ALONG VERTICAL PANEL JOINTS; DISCONTINUOUS VERTICAL FOAM TAPE APPLIED BETWEEN PANEL ADHESIVE LOCATIONS
- ④ 1/4" (MIN) TO 3/8" (MAX) BEAD OF LAMINATORS APPROVED PANEL ADHESIVE APPLIED IN VERTICAL LINES ON BOTH SIDES OF FOAM TAPE AT VERTICAL PANEL JOINTS AND ONE SIDE OF FOAM TAPE AT VERTICAL PANEL EDGES
- ⑤ 1/4" (MIN) TO 3/8" (MAX) BEAD OF LAMINATORS APPROVED PANEL ADHESIVE APPLIED IN 2" X 3" Z-FORMATIONS; SPACING OF ADHESIVE LOCATIONS TO BE BASED ON PROJECT SPECIFIC WIND LOADS:
 - 0 TO 40 PSF:
 - A. 24" O.C. (MAX) HORIZONTAL SPACING AND 16" O.C. (MAX) VERTICAL SPACING WITHIN FIELD OF PANEL
 - B. 24" (MAX) HORIZONTAL SPACING BETWEEN VERTICAL PANEL JOINTS/EDGES AND ADJACENT ADHESIVE LOCATIONS
 - C. 6" (MAX) VERTICAL SPACING BETWEEN HORIZONTAL PANEL JOINTS/EDGES AND ADJACENT ADHESIVE LOCATIONS
 - 41 TO 60 PSF:
 - A. 16" O.C. (MAX) HORIZONTAL AND VERTICAL SPACING WITHIN FIELD OF PANEL
 - B. 16" (MAX) HORIZONTAL SPACING BETWEEN VERTICAL PANEL JOINTS/EDGES AND ADJACENT ADHESIVE LOCATIONS
 - C. 6" (MAX) VERTICAL SPACING BETWEEN HORIZONTAL PANEL JOINTS/EDGES AND ADJACENT ADHESIVE LOCATIONS

NOTE: 60 PSF MAX WIND LOAD AS DETAILED. CONTACT LAMINATORS FOR INSTALLATIONS WITH WIND LOADS GREATER THAN 60 PSF.

File Name: 20200131_CC_Plywood_Detail_Set_R5



www.LaminatorsInc.com

877.OMEGA.77

PARTIAL SYSTEM ELEVATION

CLIP AND CAULK INSTALLATION
OVER PLYWOOD SHEATHING

Date:
1/31/2020

Drawn By:
JJM

Dwg. No.:
CC-PL-EL

Rev:
05

LAMINATORS APPROVED PANEL ADHESIVE APPLIED AS SHOWN ON DETAIL CC-PL-EL, TYP.

PANEL CLIP, TYP. (REFER TO CLIP SPACING BY WIND LOAD)

1/2" SEALANT JOINT

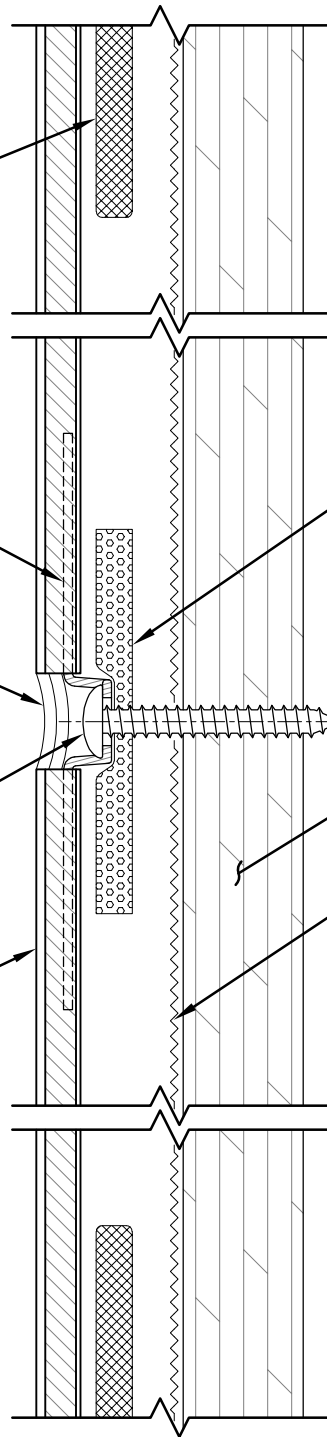
LOW-PROFILE HEAD SCREW, TYP. ALL CLIP LOCATIONS

6mm OMEGA-LITE PANEL, TYP.

FOAM TAPE APPLIED ALONG HORIZONTAL PANEL JOINT; MAINTAIN VENTING AND DRAINAGE GAPS IN HORIZONTAL TAPE AS SHOWN ON DETAIL CC-PL-EL

5/8" PLYWOOD SHEATHING

LAMINATORS APPROVED AIR AND WATER BARRIER



SECTION VIEW

CLIP SPACING BY WIND LOAD:

- 0 TO 60 PSF: INSTALL CLIPS AT 12" O.C. (MAX) SPACING WITH (1) #8 PPH SCREW PER CLIP LOCATION; CLIPS TO BE LOCATED WITHIN 6" OF PANEL CORNERS ALONG EACH PANEL EDGE
- GREATER THAN 60 PSF: CONTACT LAMINATORS TECHNICAL SUPPORT

DETAIL NOTES:

1. SPACING SHOWN BETWEEN PANELS AND SUBSTRATES AND THICKNESS OF SOME PANEL SYSTEM COMPONENTS EXAGGERATED FOR CLARITY
2. REFER TO PARTIAL SYSTEM ELEVATION DETAIL CC-PL-EL FOR REQUIRED FOAM TAPE AND PANEL ADHESIVE LAYOUT

File Name: 20200131_CC_Plywood_Detail_Set_R5



www.LaminatorsInc.com

877.OMEGA.77

TYPICAL HORIZONTAL JOINT

CLIP AND CAULK INSTALLATION
OVER PLYWOOD SHEATHING

Date:
1/31/2020

Drawn By:
JJM

Dwg. No.:
CC-PL-01H

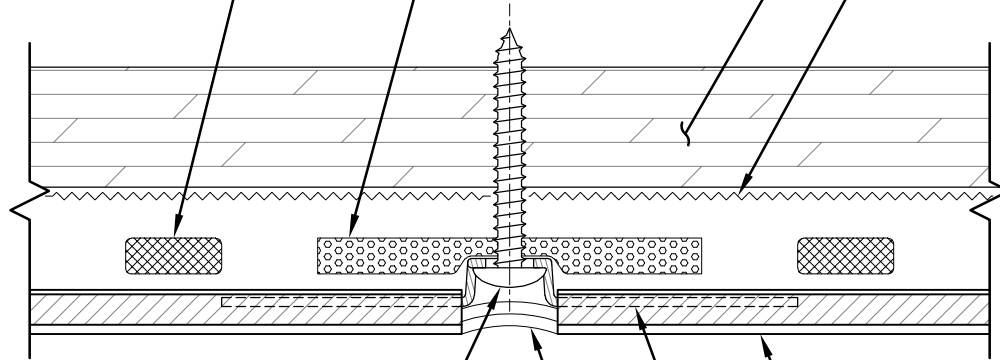
Rev:
05

CONTINUOUS BEAD OF LAMINATORS APPROVED PANEL ADHESIVE APPLIED AS SHOWN ON DETAIL CC-PL-EL, TYP.

CONTINUOUS VERTICAL FOAM TAPE APPLIED ALONG VERTICAL PANEL JOINT

5/8" PLYWOOD SHEATHING

LAMINATORS APPROVED AIR AND WATER BARRIER



LOW-PROFILE HEAD SCREW, TYP. ALL CLIP LOCATIONS

PANEL CLIP, TYP. (REFER TO CLIP SPACING BY WIND LOAD)

1/2" SEALANT JOINT

6mm OMEGA-LITE PANEL, TYP.

PLAN SECTION VIEW

CLIP SPACING BY WIND LOAD:

- 0 TO 60 PSF: INSTALL CLIPS AT 12" O.C. (MAX) SPACING WITH (1) #8 PPH SCREW PER CLIP LOCATION; CLIPS TO BE LOCATED WITHIN 6" OF PANEL CORNERS ALONG EACH PANEL EDGE
- GREATER THAN 60 PSF: CONTACT LAMINATORS TECHNICAL SUPPORT

DETAIL NOTES:

1. SPACING SHOWN BETWEEN PANELS AND SUBSTRATES AND THICKNESS OF SOME PANEL SYSTEM COMPONENTS EXAGGERATED FOR CLARITY
2. REFER TO PARTIAL SYSTEM ELEVATION DETAIL CC-PL-EL FOR REQUIRED FOAM TAPE AND PANEL ADHESIVE LAYOUT

File Name: 20200131_CC_Plywood_Detail_Set_R5



www.LaminatorsInc.com

877.OMEGA.77

TYPICAL VERTICAL JOINT

CLIP AND CAULK INSTALLATION OVER PLYWOOD SHEATHING

Date:
1/31/2020

Drawn By:
JJM

Dwg. No.:
CC-PL-01V

Rev:
05

LAMINATORS APPROVED PANEL ADHESIVE APPLIED WITHIN 6" OF PANEL EDGE SIMILAR TO THAT SHOWN ON DETAIL CC-PL-EL, TYP.

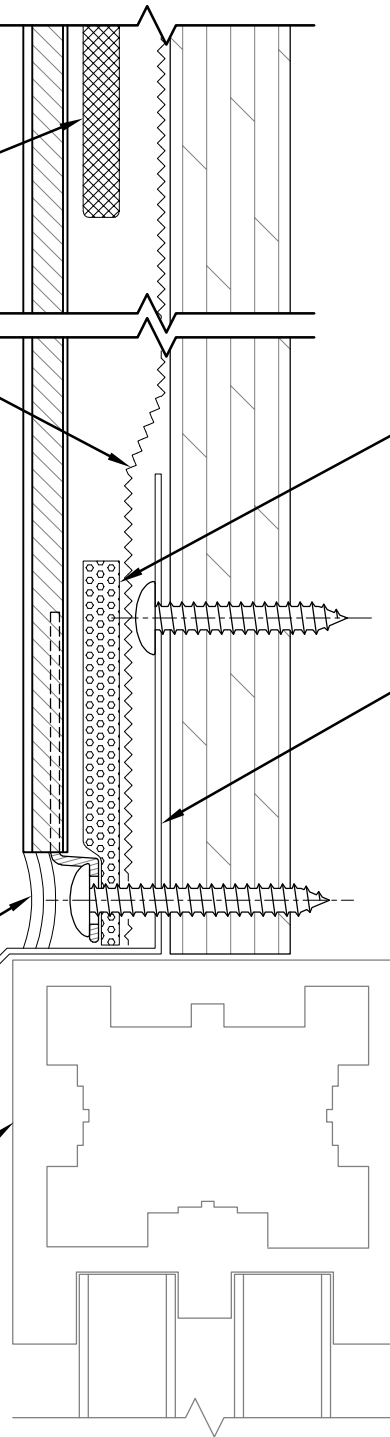
AIR AND WATER BARRIER TO LAP OVER FLASHING IN SHINGLE FASHION

HORIZONTAL FOAM TAPE APPLIED ALONG PANEL EDGE; MAINTAIN VENTING AND DRAINAGE GAPS IN TAPE SIMILAR TO THAT SHOWN ON DETAIL CC-PL-EL

METAL HEAD FLASHING MECHANICALLY FASTENED TO SHEATHING (COORDINATE W/ WINDOW SYSTEM INSTALLATION REQUIREMENTS)

1/2" SEALANT JOINT; PROVIDE GAPS IN SEALANT AT FOAM TAPE VENTING LOCATIONS

WINDOW SYSTEM BY OTHERS



SECTION VIEW

DETAIL NOTES:

1. SPACING SHOWN BETWEEN PANELS AND SUBSTRATES AND THICKNESS OF SOME PANEL SYSTEM COMPONENTS EXAGGERATED FOR CLARITY
2. REFER TO PARTIAL SYSTEM ELEVATION DETAIL CC-PL-EL FOR REQUIRED FOAM TAPE AND PANEL ADHESIVE LAYOUT
3. REFER TO JOINT DETAILS CC-PL-01H & CC-PL-01V FOR CLIP SPACING AND TYPICAL COMPONENTS NOT ANNOTATED

File Name: 20200131_CC_Plywood_Detail_Set_R5



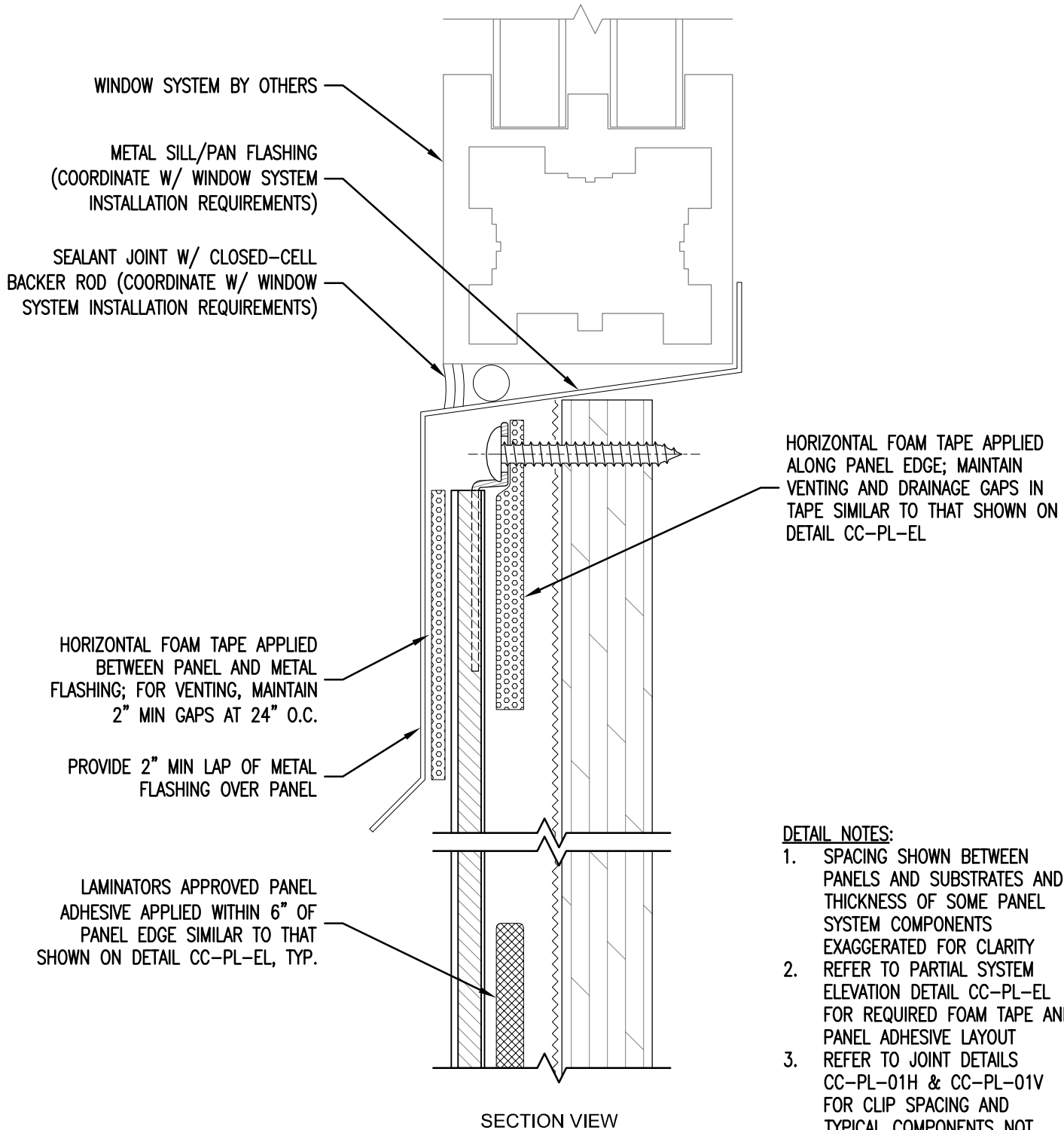
www.LaminatorsInc.com

877.OMEGA.77

TYPICAL HEAD DETAIL

CLIP AND CAULK INSTALLATION OVER PLYWOOD SHEATHING

Date: 1/31/2020	Drawn By: JJM	Dwg. No.: CC-PL-02	Rev: 05
--------------------	------------------	-----------------------	------------



DETAIL NOTES:

1. SPACING SHOWN BETWEEN PANELS AND SUBSTRATES AND THICKNESS OF SOME PANEL SYSTEM COMPONENTS EXAGGERATED FOR CLARITY
2. REFER TO PARTIAL SYSTEM ELEVATION DETAIL CC-PL-EL FOR REQUIRED FOAM TAPE AND PANEL ADHESIVE LAYOUT
3. REFER TO JOINT DETAILS CC-PL-01H & CC-PL-01V FOR CLIP SPACING AND TYPICAL COMPONENTS NOT ANNOTATED

File Name: 20200131_CC_Plywood_Detail_Set_R5



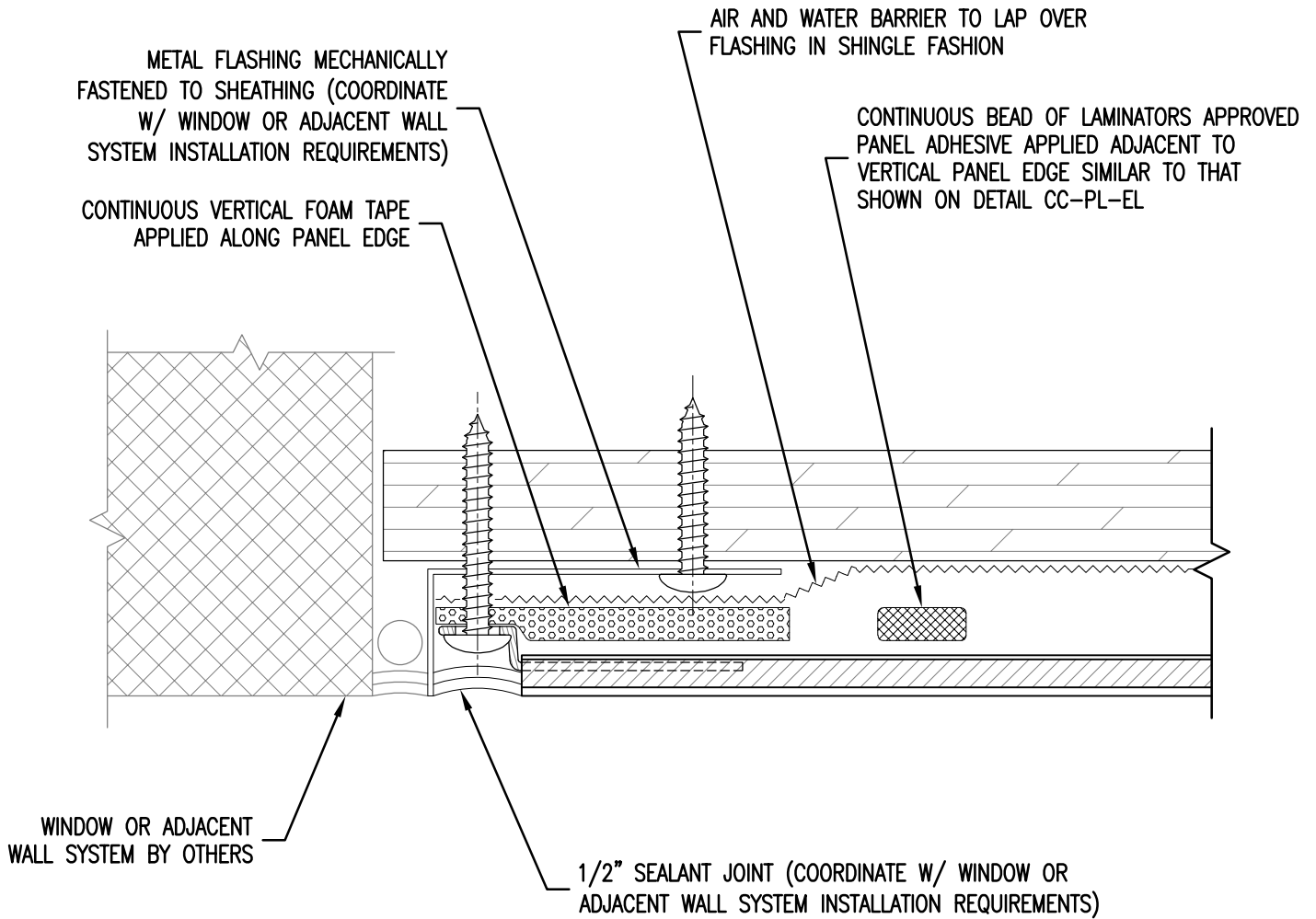
www.LaminatorsInc.com

877.OMEGA.77

TYPICAL SILL DETAIL

CLIP AND CAULK INSTALLATION
OVER PLYWOOD SHEATHING

Date: 1/31/2020	Drawn By: JJM	Dwg. No.: CC-PL-03	Rev: 05
--------------------	------------------	-----------------------	------------



PLAN SECTION VIEW

DETAIL NOTES:

1. SPACING SHOWN BETWEEN PANELS AND SUBSTRATES AND THICKNESS OF SOME PANEL SYSTEM COMPONENTS EXAGGERATED FOR CLARITY
2. REFER TO PARTIAL SYSTEM ELEVATION DETAIL CC-PL-EL FOR REQUIRED FOAM TAPE AND PANEL ADHESIVE LAYOUT
3. REFER TO JOINT DETAILS CC-PL-01H & CC-PL-01V FOR CLIP SPACING AND TYPICAL COMPONENTS NOT ANNOTATED

File Name: 20200131_CC_Plywood_Detail_Set_R5



www.LaminatorsInc.com

877.OMEGA.77

TYPICAL JAMB / END-OF-RUN DETAIL

CLIP AND CAULK INSTALLATION
OVER PLYWOOD SHEATHING

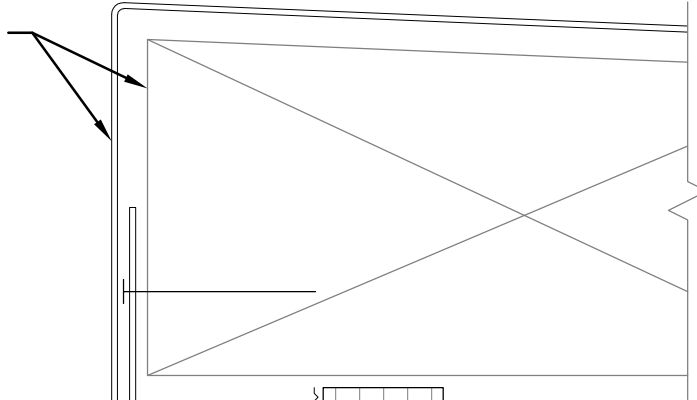
Date:
1/31/2020

Drawn By:
JJM

Dwg. No.:
CC-PL-04

Rev:
05

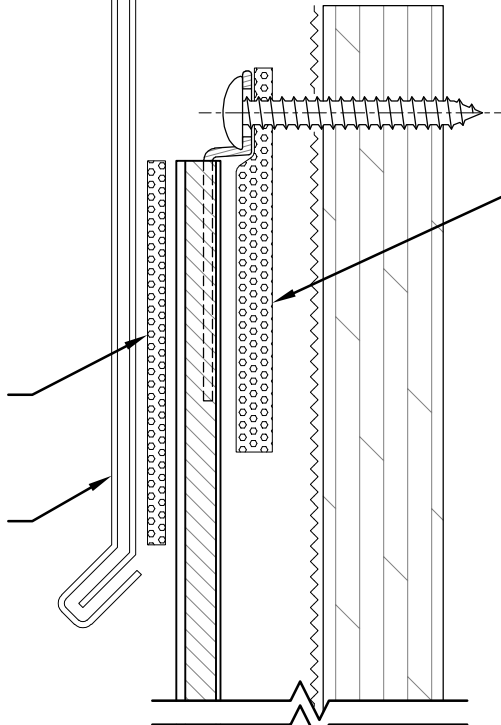
PARAPET WALL METAL COPING AND
BLOCKING BY OTHERS



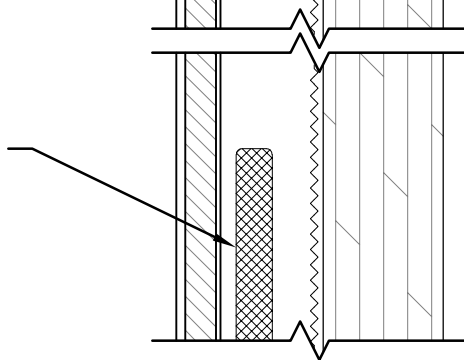
HORIZONTAL FOAM TAPE APPLIED
ALONG PANEL EDGE; MAINTAIN
VENTING AND DRAINAGE GAPS IN
TAPE SIMILAR TO THAT SHOWN ON
DETAIL CC-PL-EL

HORIZONTAL FOAM TAPE APPLIED
BETWEEN PANEL AND METAL
COPING; FOR VENTING, MAINTAIN
2" MIN GAPS AT 24" O.C.

PROVIDE 2" MIN LAP OF METAL
COPING SYSTEM OVER PANEL



LAMINATORS APPROVED PANEL
ADHESIVE APPLIED WITHIN 6" OF
PANEL EDGE SIMILAR TO THAT
SHOWN ON DETAIL CC-PL-EL, TYP.



SECTION VIEW

DETAIL NOTES:

1. SPACING SHOWN BETWEEN PANELS AND SUBSTRATES AND THICKNESS OF SOME PANEL SYSTEM COMPONENTS EXAGGERATED FOR CLARITY
2. REFER TO PARTIAL SYSTEM ELEVATION DETAIL CC-PL-EL FOR REQUIRED FOAM TAPE AND PANEL ADHESIVE LAYOUT
3. REFER TO JOINT DETAILS CC-PL-01H & CC-PL-01V FOR CLIP SPACING AND TYPICAL COMPONENTS NOT ANNOTATED

File Name: 20200131_CC_Plywood_Detail_Set_R5



www.LaminatorsInc.com

877.OMEGA.77

TYPICAL PARAPET DETAIL

**CLIP AND CAULK INSTALLATION
OVER PLYWOOD SHEATHING**

Date: 1/31/2020	Drawn By: JJM	Dwg. No.: CC-PL-05	Rev: 05
--------------------	------------------	-----------------------	------------

LAMINATORS APPROVED PANEL
ADHESIVE APPLIED WITHIN 6" OF
PANEL EDGE SIMILAR TO THAT
SHOWN ON DETAIL CC-PL-EL, TYP.

AIR AND WATER BARRIER TO LAP
OVER FLASHING IN SHINGLE FASHION

#8 PPH (OR OTHER LOW-PROFILE
HEAD) SCREWS AT 12" O.C.

J-MOLDING (PART NO. 4515X)

SEALANT JOINT W/ CLOSED-CELL
BACKER ROD; PROVIDE GAPS IN
SEALANT AND BACKER ROD AT FOAM
TAPE VENTING LOCATIONS)

CONTINUOUS BUTYL SEALANT
BETWEEN METAL FLASHING
AND GRADE

HORIZONTAL FOAM TAPE APPLIED
ALONG PANEL EDGE; MAINTAIN
VENTING AND DRAINAGE GAPS IN
TAPE SIMILAR TO THAT SHOWN ON
DETAIL CC-PL-EL

METAL BASE FLASHING
MECHANICALLY FASTENED TO
SHEATHING (COORDINATE W/
INSTALLATION REQUIREMENTS FOR
INTERFACE WITH GRADE CONDITIONS)

GRADE

DETAIL NOTES:

1. SPACING SHOWN BETWEEN
PANELS AND SUBSTRATES AND
THICKNESS OF SOME PANEL
SYSTEM COMPONENTS
EXAGGERATED FOR CLARITY
2. REFER TO PARTIAL SYSTEM
ELEVATION DETAIL CC-PL-EL
FOR REQUIRED FOAM TAPE AND
PANEL ADHESIVE LAYOUT
3. REFER TO JOINT DETAILS
CC-PL-01H & CC-PL-01V
FOR CLIP SPACING AND
TYPICAL COMPONENTS NOT
ANNOTATED

SECTION VIEW

File Name: 20200131_CC_Plywood_Detail_Set_R5



www.LaminatorsInc.com

877.OMEGA.77

TYPICAL GRADE DETAIL

CLIP AND CAULK INSTALLATION
OVER PLYWOOD SHEATHING

Date:
1/31/2020

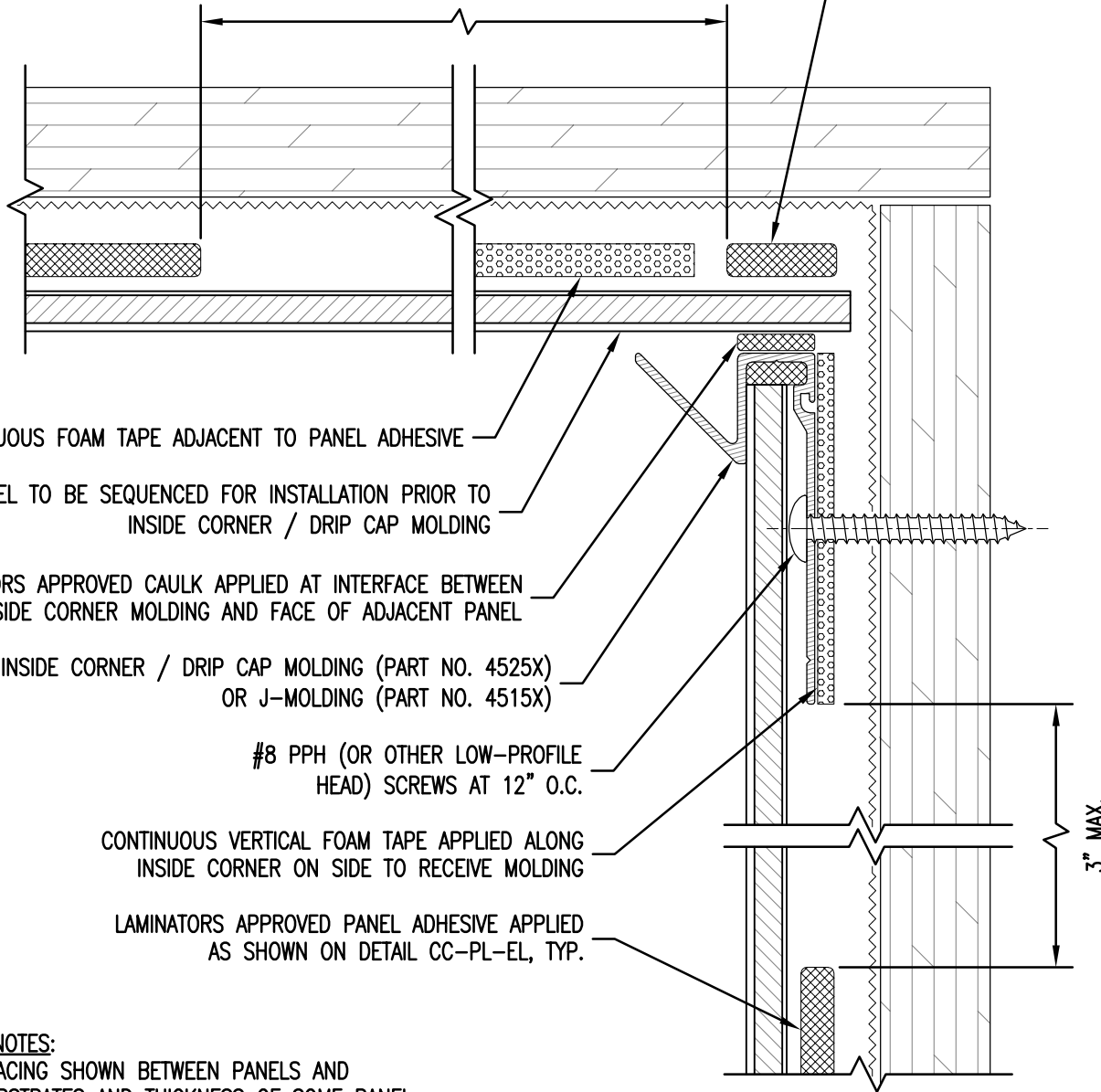
Drawn By:
JJM

Dwg. No.:
CC-PL-06

Rev:
05

CONTINUOUS BEAD OF LAMINATORS APPROVED PANEL ADHESIVE APPLIED SIMILAR TO THAT SHOWN ON DETAIL CC-PL-EL PRIOR TO PLACEMENT OF PANEL

12" MAX.



CONTINUOUS FOAM TAPE ADJACENT TO PANEL ADHESIVE

PANEL TO BE SEQUENCED FOR INSTALLATION PRIOR TO INSIDE CORNER / DRIP CAP MOLDING

LAMINATORS APPROVED CAULK APPLIED AT INTERFACE BETWEEN INSIDE CORNER MOLDING AND FACE OF ADJACENT PANEL

INSIDE CORNER / DRIP CAP MOLDING (PART NO. 4525X) OR J-MOLDING (PART NO. 4515X)

#8 PPH (OR OTHER LOW-PROFILE HEAD) SCREWS AT 12" O.C.

CONTINUOUS VERTICAL FOAM TAPE APPLIED ALONG INSIDE CORNER ON SIDE TO RECEIVE MOLDING

LAMINATORS APPROVED PANEL ADHESIVE APPLIED AS SHOWN ON DETAIL CC-PL-EL, TYP.

3" MAX.

DETAIL NOTES:

1. SPACING SHOWN BETWEEN PANELS AND SUBSTRATES AND THICKNESS OF SOME PANEL SYSTEM COMPONENTS EXAGGERATED FOR CLARITY
2. REFER TO PARTIAL SYSTEM ELEVATION DETAIL CC-PL-EL FOR REQUIRED FOAM TAPE AND PANEL ADHESIVE LAYOUT
3. REFER TO JOINT DETAILS CC-PL-01H & CC-PL-01V FOR CLIP SPACING AND TYPICAL COMPONENTS NOT ANNOTATED

PLAN SECTION VIEW

File Name: 20200131_CC_Plywood_Detail_Set_R5



www.LaminatorsInc.com

877.OMEGA.77

TYPICAL INSIDE CORNER DETAIL

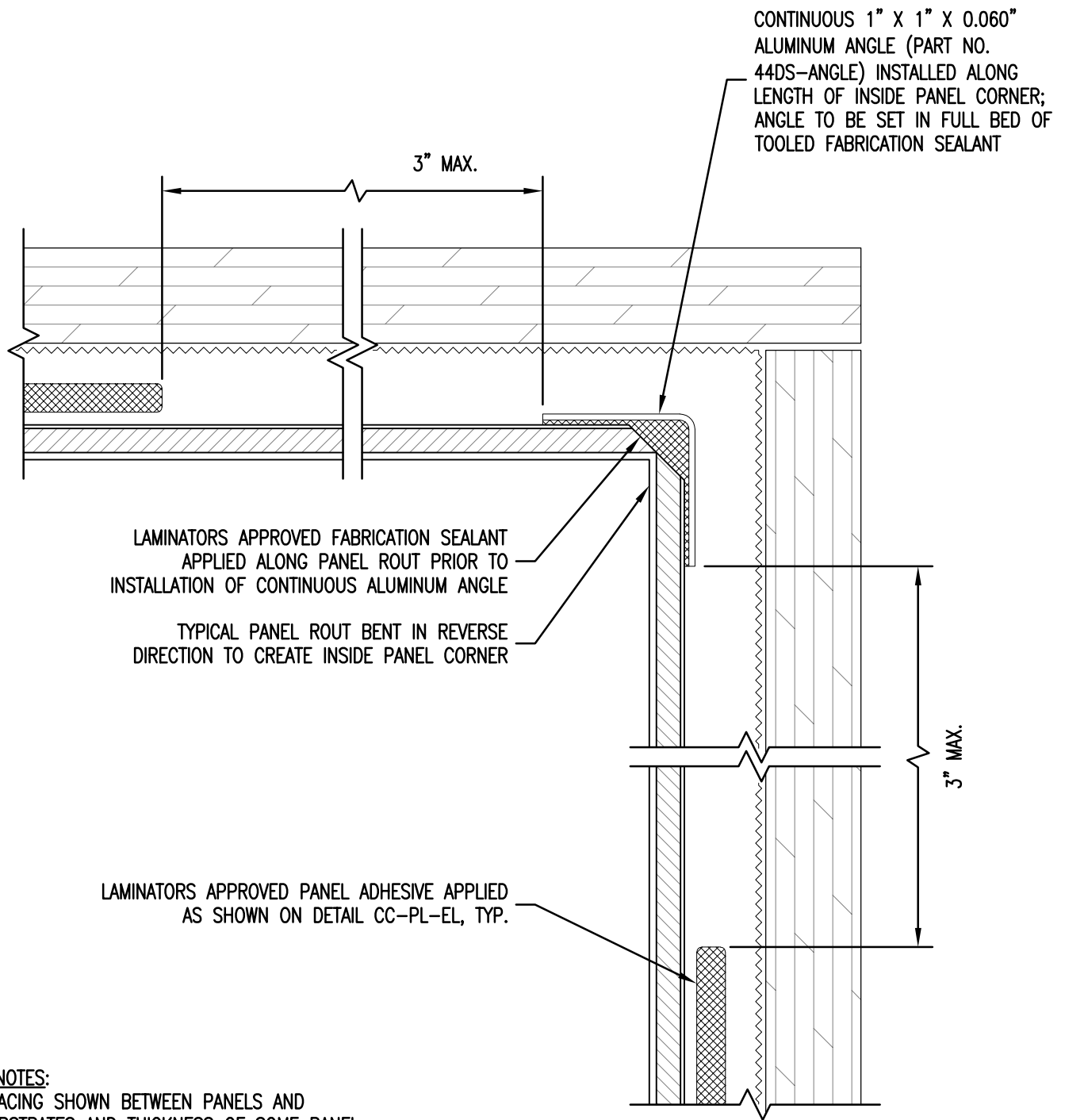
CLIP AND CAULK INSTALLATION OVER PLYWOOD SHEATHING

Date:
1/31/2020

Drawn By:
JJM

Dwg. No.:
CC-PL-07

Rev:
05



LAMINATORS APPROVED FABRICATION SEALANT
 APPLIED ALONG PANEL ROUT PRIOR TO
 INSTALLATION OF CONTINUOUS ALUMINUM ANGLE

TYPICAL PANEL ROUT BENT IN REVERSE
 DIRECTION TO CREATE INSIDE PANEL CORNER

LAMINATORS APPROVED PANEL ADHESIVE APPLIED
 AS SHOWN ON DETAIL CC-PL-EL, TYP.

PLAN SECTION VIEW

DETAIL NOTES:

1. SPACING SHOWN BETWEEN PANELS AND SUBSTRATES AND THICKNESS OF SOME PANEL SYSTEM COMPONENTS EXAGGERATED FOR CLARITY
2. REFER TO PARTIAL SYSTEM ELEVATION DETAIL CC-PL-EL FOR REQUIRED FOAM TAPE AND PANEL ADHESIVE LAYOUT
3. REFER TO JOINT DETAILS CC-PL-01H & CC-PL-01V FOR CLIP SPACING AND TYPICAL COMPONENTS NOT ANNOTATED

File Name: 20200131_CC_Plywood_Detail_Set_R5



www.LaminatorsInc.com

877.OMEGA.77

ALTERNATE INSIDE CORNER DETAIL

CLIP AND CAULK INSTALLATION
 OVER PLYWOOD SHEATHING

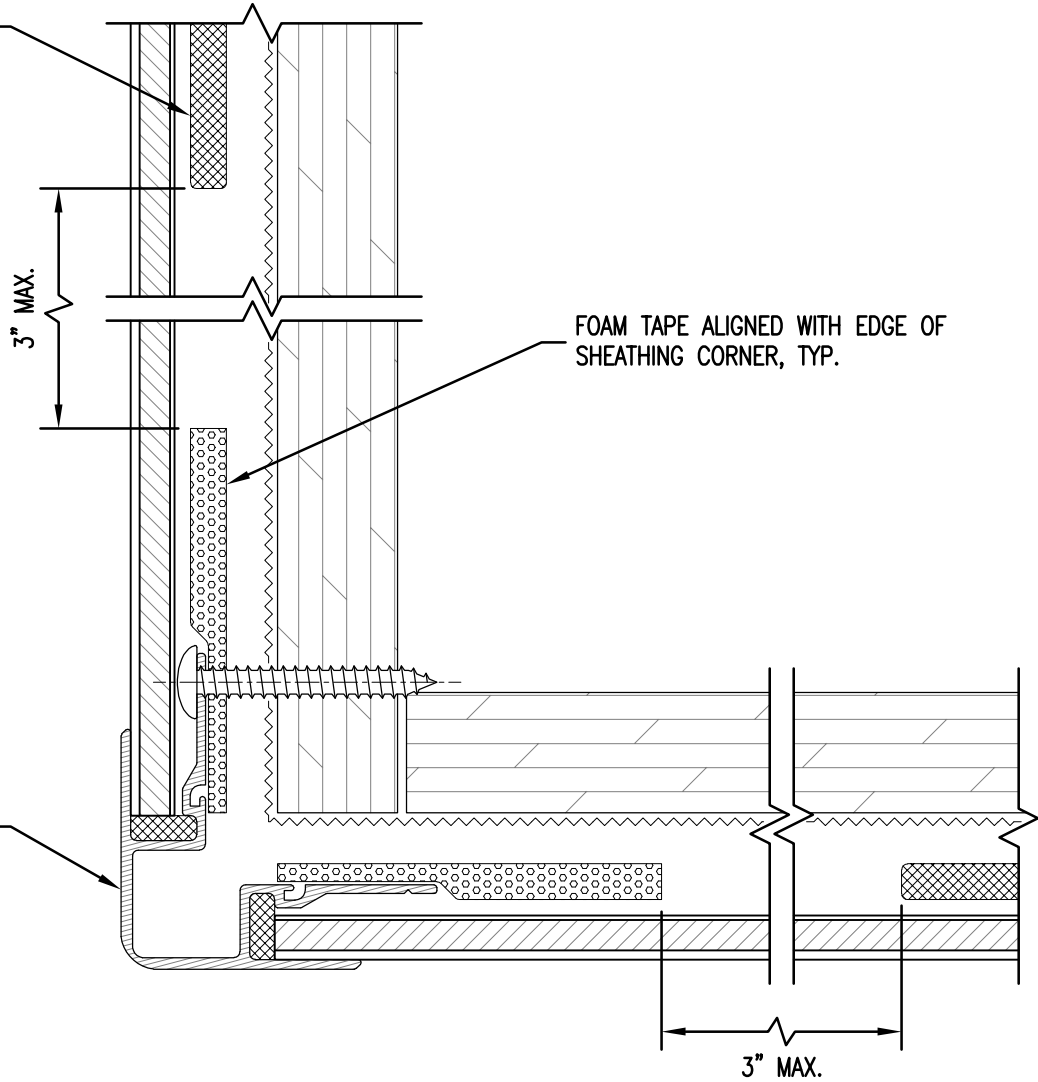
Date:
1/31/2020

Drawn By:
JJM

Dwg. No.:
CC-PL-07A

Rev:
05

LAMINATORS APPROVED
 PANEL ADHESIVE APPLIED
 AS SHOWN ON DETAIL
 CC-PL-EL, TYP.



OUTSIDE CORNER MOLDING
 (PART NO. 4535X)

FOAM TAPE ALIGNED WITH EDGE OF
 SHEATHING CORNER, TYP.

3" MAX.

PLAN SECTION VIEW

DETAIL NOTES:

1. SPACING SHOWN BETWEEN PANELS AND SUBSTRATES AND THICKNESS OF SOME PANEL SYSTEM COMPONENTS EXAGGERATED FOR CLARITY
2. REFER TO PARTIAL SYSTEM ELEVATION DETAIL CC-PL-EL FOR REQUIRED FOAM TAPE AND PANEL ADHESIVE LAYOUT
3. REFER TO JOINT DETAILS CC-PL-01H & CC-PL-01V FOR CLIP SPACING AND TYPICAL COMPONENTS NOT ANNOTATED

NOTE: THIS DETAIL IS NOT TO BE USED FOR FASCIA-TO-SOFFIT TRANSITIONS

File Name: 20200131_CC_Plywood_Detail_Set_R5



www.LaminatorsInc.com

877.OMEGA.77

TYPICAL OUTSIDE CORNER DETAIL

CLIP AND CAULK INSTALLATION
 OVER PLYWOOD SHEATHING

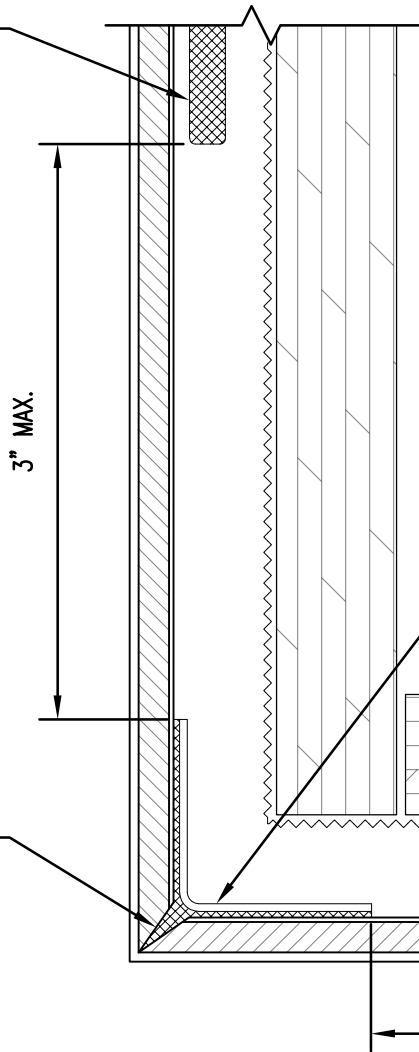
Date:
1/31/2020

Drawn By:
JJM

Dwg. No.:
CC-PL-08

Rev:
05

LAMINATORS APPROVED
 PANEL ADHESIVE APPLIED
 AS SHOWN ON DETAIL
 CC-PL-EL, TYP.



CONTINUOUS 1" X 1" X 0.060" ALUMINUM ANGLE
 (PART NO. 44DS-ANGLE) INSTALLED ALONG LENGTH
 OF OUTSIDE PANEL CORNER; ANGLE TO BE SET IN
 FULL BED OF TOOLED FABRICATION SEALANT

LAMINATORS APPROVED
 FABRICATION SEALANT
 APPLIED TO PANEL ROUT
 PRIOR TO BENDING TO
 FORM PANEL CORNER
 (REFERENCE LAMINATORS
 ROUT AND RETURN
 INSTALLATION MANUAL)

3" MAX.

PLAN SECTION VIEW

DETAIL NOTES:

1. SPACING SHOWN BETWEEN PANELS AND SUBSTRATES AND THICKNESS OF SOME PANEL SYSTEM COMPONENTS EXAGGERATED FOR CLARITY
2. REFER TO PARTIAL SYSTEM ELEVATION DETAIL CC-PL-EL FOR REQUIRED FOAM TAPE AND PANEL ADHESIVE LAYOUT
3. REFER TO JOINT DETAILS CC-PL-01H & CC-PL-01V FOR CLIP SPACING AND TYPICAL COMPONENTS NOT ANNOTATED

NOTE: THIS DETAIL IS NOT TO BE USED FOR FASCIA-TO-SOFFIT TRANSITIONS

File Name: 20200131_CC_Plywood_Detail_Set_R5



OMEGA PANEL PRODUCTS Ω

LAMINATORS INC.

www.LaminatorsInc.com

877.OMEGA.77

ALTERNATE OUTSIDE CORNER DETAIL

CLIP AND CAULK INSTALLATION
 OVER PLYWOOD SHEATHING

Date:
1/31/2020

Drawn By:
JJM

Dwg. No.:
CC-PL-08A

Rev:
05

HORIZONTAL FOAM TAPE ALIGNED WITH EDGE OF SHEATHING CORNER; MAINTAIN VENTING AND DRAINAGE GAPS IN TAPE SIMILAR TO THAT SHOWN ON DETAIL CC-PL-EL

J-MOLDING (PART NO. 4515X), TYP. ALIGN BOTTOM OF MOLDING WITH ADJACENT MOLDING OR LOWER

1/8" NOM.

CONTINUOUS FOAM TAPE ALIGNED WITH EDGE OF SHEATHING CORNER

SECTION VIEW

DETAIL NOTES:

1. SPACING SHOWN BETWEEN PANELS AND SUBSTRATES AND THICKNESS OF SOME PANEL SYSTEM COMPONENTS EXAGGERATED FOR CLARITY
2. REFER TO PARTIAL SYSTEM ELEVATION DETAIL CC-PL-EL FOR REQUIRED FOAM TAPE AND PANEL ADHESIVE LAYOUT
3. REFER TO JOINT DETAILS CC-PL-01H & CC-PL-01V FOR TYPICAL COMPONENTS NOT ANNOTATED

NOTE: FOR INSTALLATION OF FASCIA-TO-SOFFIT TRANSITIONS OVER CURVED SUBSTRATES, REFER TO OMEGA-FLEX INSTALLATION MANUAL FOR INSTRUCTIONS ON RELIEF CUTTING AND ROLLING MOLDINGS

File Name: 20200131_CC_Plywood_Detail_Set_R5



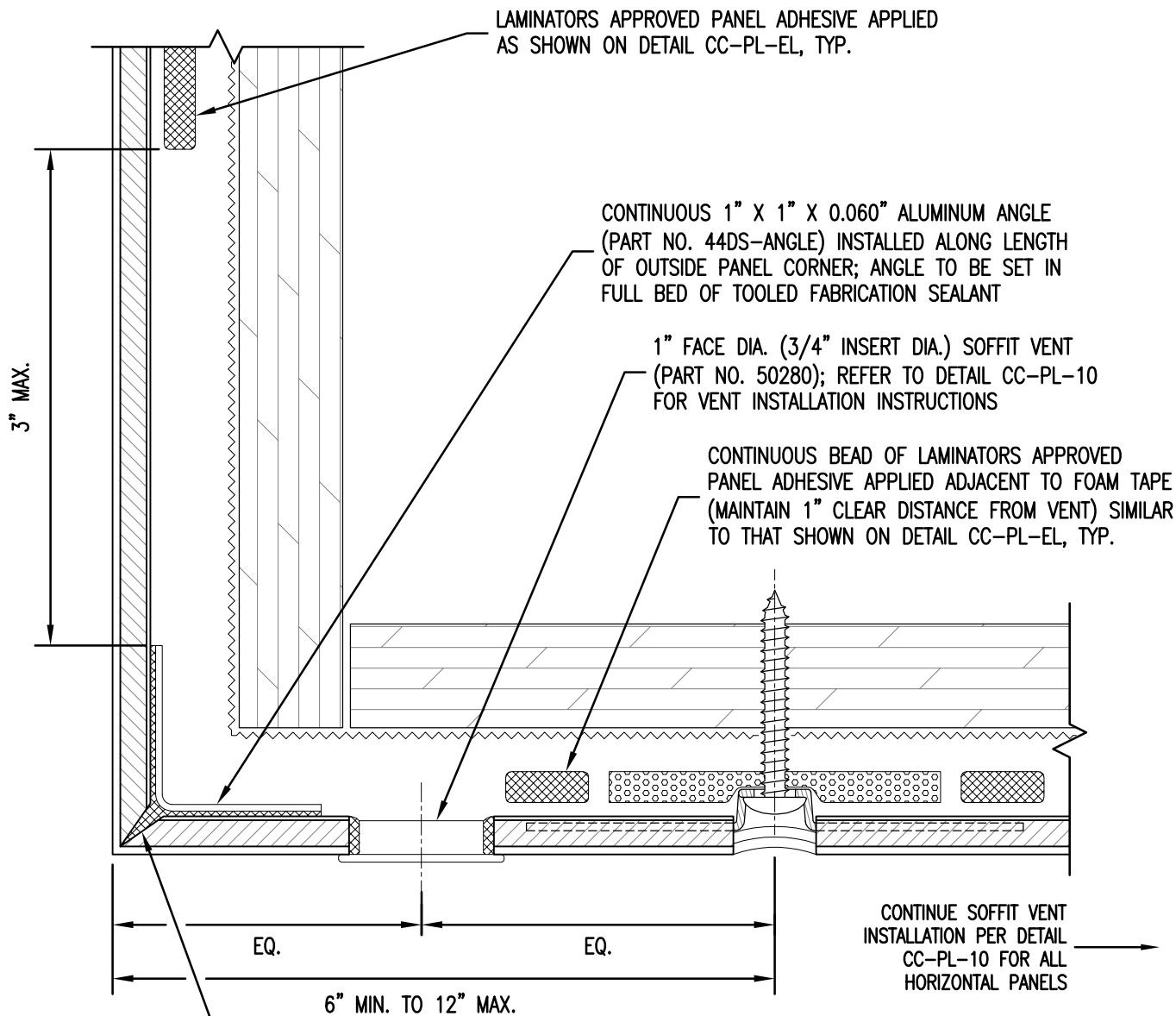
www.LaminatorsInc.com

877.OMEGA.77

TYPICAL FASCIA-TO-SOFFIT TRANSITION DETAIL

CLIP AND CAULK INSTALLATION OVER PLYWOOD SHEATHING

Date: 1/31/2020	Drawn By: JJM	Dwg. No.: CC-PL-09	Rev: 05
--------------------	------------------	-----------------------	------------



LAMINATORS APPROVED FABRICATION SEALANT APPLIED TO PANEL ROUT PRIOR TO BENDING TO FORM PANEL CORNER (REFERENCE LAMINATORS ROUT AND RETURN INSTALLATION MANUAL)

DETAIL NOTES:

1. SPACING SHOWN BETWEEN PANELS AND SUBSTRATES AND THICKNESS OF SOME PANEL SYSTEM COMPONENTS EXAGGERATED FOR CLARITY
2. REFER TO PARTIAL SYSTEM ELEVATION DETAIL CC-PL-EL FOR REQUIRED FOAM TAPE AND PANEL ADHESIVE LAYOUT
3. REFER TO JOINT DETAILS CC-PL-01H & CC-PL-01V FOR CLIP SPACING AND TYPICAL COMPONENTS NOT ANNOTATED

File Name: 20200131_CC_Plywood_Detail_Set_R5



www.LaminatorsInc.com

877.OMEGA.77

ALTERNATE FASCIA-TO-SOFFIT TRANSITION

CLIP AND CAULK INSTALLATION
OVER PLYWOOD SHEATHING

Date: 1/31/2020	Drawn By: JJM	Dwg. No.: CC-PL-09A	Rev: 05
--------------------	------------------	------------------------	------------

STEP 1: DRILL 7/8" DIA. HOLE IN PANEL FOR INSTALLATION OF SOFFIT BUTTON VENT

SUBSTRATE SIDE

7/8"

STEP 2: EDGE SEAL THE PERIMETER OF THE 7/8" DIA. HOLE USING LAMINATORS APPROVED FABRICATION (OR ROOFING GRADE) SEALANT PRIOR TO INSERTING THE VENT (SEALANT MUST BE PUSHED INTO THE FLUTES OF THE PANEL CORE)

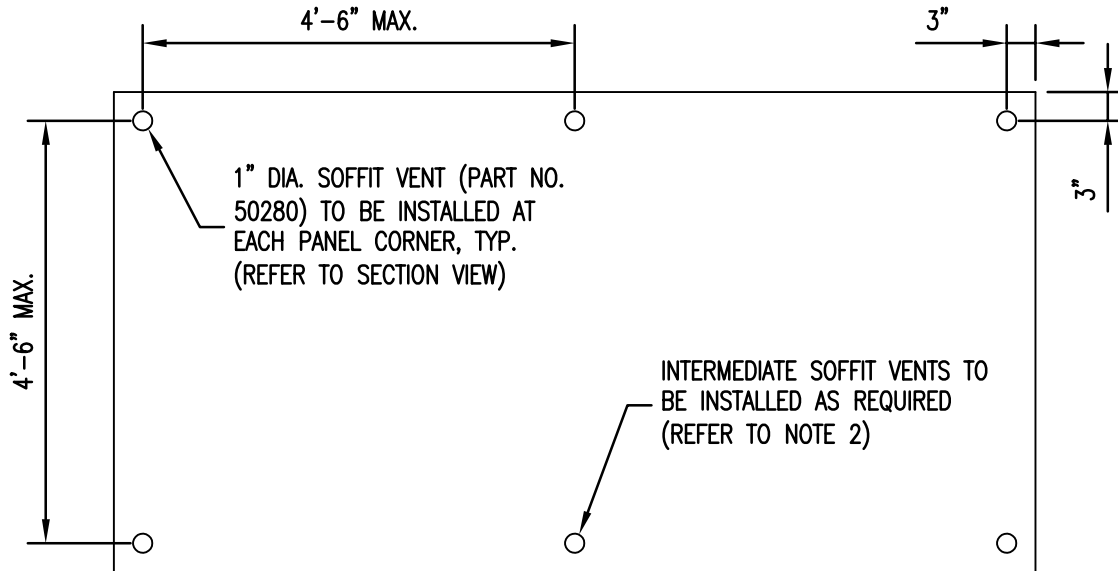
STEP 3: INSTALL AN ADDITIONAL BEAD OF LAMINATORS APPROVED FABRICATION (OR ROOFING GRADE) SEALANT AROUND THE FLANGE OF THE VENT PRIOR TO INSERTING INTO THE HOLE

6mm OMEGA-LITE PANEL, TYP.

1" FACE DIA. (3/4" INSERT DIA.) SOFFIT VENT (PART NO. 50280)

STEP 4: INSERT THE VENT INTO THE DRILLED HOLE WITH A SLIGHT TWISTING MOTION TO ENSURE COMPLETE COVERAGE OF THE SEALANT AND ADHESION TO BOTH THE PANEL AND THE VENT

SECTION VIEW



PLAN VIEW

NOTES:

1. SPACING OF VENTS SHALL NOT EXCEED 4'-6" ALONG ANY PANEL EDGE.
2. FOR PANEL EDGE DIMENSIONS LONGER THAN 4'-6", INTERMEDIATE VENTS SHALL BE INSTALLED WITH EQUAL SPACING SO THAT NO DISTANCE BETWEEN VENTS (MEASURED CENTERLINE TO CENTERLINE) EXCEEDS 4'-6".
3. FOR ANY EDGE DIMENSION 12" AND SMALLER, A SINGLE VENT MAY BE INSTALLED ALONG THE CENTERLINE OF THE PANEL EDGE IN PLACE OF INSTALLATION OF VENTS AT EACH PANEL CORNER.
4. CONTACT LAMINATORS TECHNICAL SUPPORT FOR ADDITIONAL INFORMATION ON REQUIRED SOFFIT VENT INSTALLATION FOR UNIQUE PANEL GEOMETRIES.

File Name: 20200131_CC_Plywood_Detail_Set_R5



www.LaminatorsInc.com

877.OMEGA.77

SOFFIT VENT REQUIREMENTS

CLIP AND CAULK INSTALLATION OVER PLYWOOD SHEATHING

Date:
1/31/2020

Drawn By:
JJM

Dwg. No.:
CC-PL-10

Rev:
05