

## IMPORTANT NOTICE

The following document is NOT comprehensive for design, bidding, or installation when used in isolation. Please refer to all related documents in their entirety for complete information regarding this ACM panel system. Such documents include, but may not be limited to, Technical Guides, Architectural Color Chart, Approved Materials List, Systems Guides, Technical Bulletins, Technical Data Sheets, CAD Drawings, Specifications, and Submittals. Visit [LaminatorsInc.com](http://LaminatorsInc.com) for information on the latest documents regarding this panel system.

To consult directly with one of our Professional Engineers regarding our ACM panel systems, contact Laminators Technical Support between the hours of 8:00am – 5:00pm EST:

800.523.2347

[LaminatorsInc.com](http://LaminatorsInc.com)

[engineering@laminatorsinc.com](mailto:engineering@laminatorsinc.com)

## INSTRUCTIONS FOR NFPA 285 COMPLIANCE

With respect to fire performance, note the following when detailing the Dry Seal Installation System over gypsum (non-structural) sheathing:

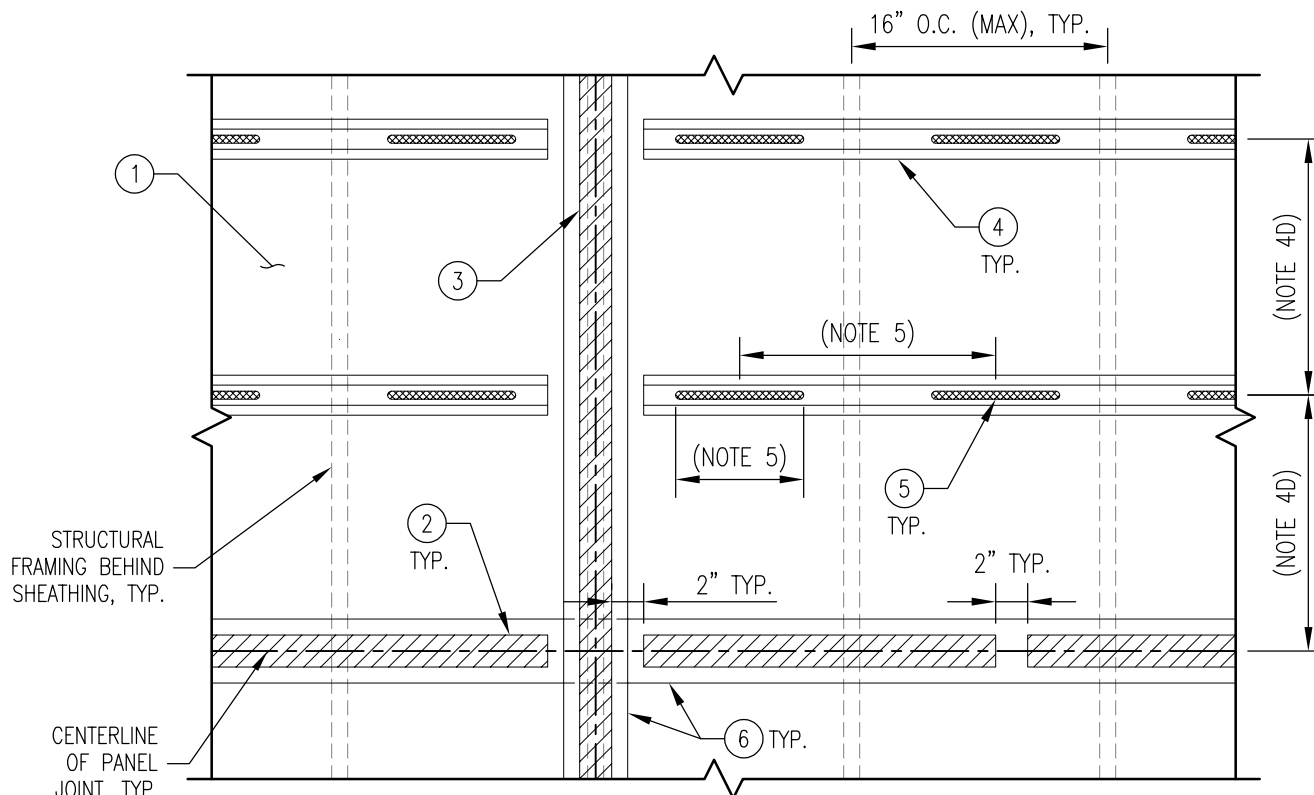
1. The following document represents the referenced system as it has been designed, detailed, and tested and its relationship with a typical exterior wall assembly. As such, the document may be considered a baseline for the system and appropriately applied to project-specific conditions.
  - a. Laminators defines the NFPA 285 Zone as the area contained within a 10'-0" height above any window by the width of the window opening. The following document does not include a partial elevation that outlines the NFPA 285 Zone and related dimensions, notes, and sections. However, in order to maintain NFPA 285 compliance, specialized detailing is still required in the NFPA 285 Zone and at window heads as follows:
    - i. Additional layers of steel flashing are required at window heads per detail DS-GYP-02A.
    - ii. Vertical panel joints are not permitted above window openings within the NFPA 285 Zone. All vertical joints must align with vertical window jambs or mullions.
2. Through the use of a specific Engineering Evaluation (EEV) available from Laminators, engineering extensions may be made (in lieu of what has been tested) with respect to base wall framing, fire-stopping at floor lines, cavity insulation, and water-resistive barrier (WRB) components while maintaining NFPA 285 compliance. The EEV may be required for submission to the Authority Having Jurisdiction (AHJ) to support the extensions.
3. If one or more engineering extensions are required beyond what is provided in the EEV available from Laminators, it is the responsibility of a third-party to pursue obtaining a separate EEV that adequately addresses each intended substitution. Note that Laminators cannot serve as the third-party in efforts to obtain such an EEV.

Note that the application of any engineering extension for NFPA 285 compliance will need to be evaluated by the Design Professional of Record (DPR) with respect to potential impact on any air, structural, and water performance of the project-specific exterior wall assembly. It is possible that components substituted to achieve fire testing compliance will affect the assembly differently with respect to air, structural, and water performance and need to be coordinated.

If the Dry Seal Installation System is intended to be installed over a different substrate (e.g. fire-retardant-treated wood (FRTW) structural sheathing (panels), CMU, concrete, or Omega CI rigid insulation panels), please defer to the appropriate detail set.

DRAWING INDEX – DS-GYP DETAIL SET (Rev 02, 06/09/2022)

DWG NO.	TITLE	REV DATE	REV	CHANGE FROM PREVIOUS REV
DS-GYP-EL	Partial System Elevation	6/9/2022	02	Min screw length (Note 6)
DS-GYP-ST	Panel Stiffener Detail	8/25/2020	00	
DS-GYP-01	Joint Detail	12/3/2020	01	
DS-GYP-01A	Joint Detail (Custom Width)	12/3/2020	01	
DS-GYP-01B	Joint Detail (Alternate Insert Strip Install)	12/3/2020	01	
DS-GYP-02	Window Head Detail	12/3/2020	01	
DS-GYP-02A	Window Head Detail (NFPA 285 Zone)	12/3/2020	01	
DS-GYP-03	Window Sill Detail	12/3/2020	01	
DS-GYP-04	Window Jamb / Vertical Edge Detail	12/3/2020	01	
DS-GYP-04A	Window Jamb / Vertical Edge Detail w/ Trim	12/3/2020	01	
DS-GYP-04B	Vertical Edge Detail (Alt. Insert Strip Install)	12/3/2020	01	
DS-GYP-05	Top of Wall Detail	12/3/2020	01	
DS-GYP-06	Base of Wall (Grade) Detail	12/3/2020	01	
DS-GYP-07	Inside Corner Detail	8/25/2020	00	
DS-GYP-08	Outside Corner Detail	8/25/2020	00	
DS-GYP-09	Fascia-to-Soffit Transition Detail	8/25/2020	00	
DS-GYP-10	Soffit-to-Wall Transition Detail w/ Joint	12/3/2020	01	
DS-GYP-11	Soffit Vent Requirements	8/25/2020	00	



**PARTIAL SYSTEM ELEVATION**  
(PANELS AND EXTRUSIONS NOT SHOWN)

- ① 5/8" (MAX) EXTERIOR-GRADE GYPSUM SHEATHING W/ AIR AND WATER BARRIER (AWB); TYPE OF AWB TO BE SELECTED BY DESIGN PROFESSIONAL OF RECORD
- ② HORIZONTAL FOAM TAPE APPLIED TO COLD-FORMED STRAPPING ALONG HORIZONTAL PANEL JOINTS WITH 2" (MIN) GAPS FOR VENTING AND DRAINAGE AT 24" O.C. AND AT INTERFACES WITH CONTINUOUS VERTICAL FOAM TAPE
- ③ CONTINUOUS VERTICAL FOAM TAPE APPLIED TO COLD-FORMED STRAPPING ALONG VERTICAL PANEL JOINTS
- ④ PANEL STIFFENERS (1-1/2" HAT CHANNELS, 18 GA. MIN)
  - A. MAINTAIN 3" GAPS BETWEEN ENDS OF PANEL STIFFENERS AND PANEL EDGES FOR DRAINAGE
  - B. PANEL STIFFENERS MUST BE ORIENTED HORIZONTALLY
  - C. FASTEN STIFFENERS THROUGH SHEATHING TO STRUCTURAL FRAMING BEHIND USING (2) #10 X 1" (MIN) SELF-DRILLING SCREWS PER FRAMING MEMBER ALONG HAT CHANNEL FLANGES (REFER TO DETAIL DS-GYP-ST); STRUCTURAL FRAMING TO BE 16" O.C. (MAX)
  - D. REQUIRED PANEL STIFFENER SPACING TO BE BASED ON PROJECT SPECIFIC WIND LOADS:
    - UP TO 40 PSF (ASD): STIFFENERS REQUIRED AT 24" O.C.
    - GREATER THAN 40 PSF (ASD), UP TO 60 PSF (ASD): STIFFENERS REQUIRED AT 16" O.C.
- ⑤ 1/4" (MIN) TO 3/8" (MAX) BEAD OF LAMINATORS APPROVED PANEL ADHESIVE APPLIED TO PANEL STIFFENERS (REFER TO DETAIL DS-GYP-ST); LENGTH AND SPACING OF ADHESIVE BEADS TO BE BASED ON PROJECT SPECIFIC WIND LOADS:
  - UP TO 60 PSF (ASD): 8" ADHESIVE LENGTHS AT 16" O.C.
- ⑥ CONTINUOUS 4" COLD-FORMED STRAPPING (18 GA. MIN) FASTENED THROUGH SHEATHING TO STRUCTURAL FRAMING BEHIND USING (3) #8 X 1" (MIN) PPH SELF-DRILLING SCREWS PER FRAMING MEMBER
  - HORIZONTAL STRAPPING INSTALLED AT ALL HORIZONTAL PANEL JOINTS/EDGES
  - VERTICAL STRAPPING TO BE INSTALLED AT ALL VERTICAL PANEL JOINTS/EDGES; WHERE VERTICAL PANEL JOINTS DO NOT ALIGN WITH STRUCTURAL STUD FRAMING, VERTICAL STRAPPING TO BE FASTENED TO HORIZONTAL STRAPPING USING (4) #8 X 1" (MIN) PPH SELF-DRILLING SCREWS AT EACH INTERSECTION

**IMPORTANT NOTICE**

PROJECT-SPECIFIC COMPONENTS AND CLADDING WIND LOADS (REQUIRED STRENGTH,  $R_d$ ) SHALL NOT EXCEED AVAILABLE LOAD-CARRYING CAPACITY OF SYSTEM (ALLOWABLE STRENGTH,  $R_n/\Omega$ )

- A. PROJECT-SPECIFIC COMPONENTS AND CLADDING WIND LOADS ARE TO BE DETERMINED BY THE DESIGN PROFESSIONAL OF RECORD
- B. AVAILABLE LOAD-CARRYING CAPACITY OF SYSTEM (UP TO 60 PSF) IS BASED ON ALLOWABLE STRENGTH DESIGN (ASD) METHOD
- C. FOR PROJECT-SPECIFIC COMPONENTS AND CLADDING WIND LOADS GREATER THAN 60 PSF, CONTACT LAMINATORS TECHNICAL SUPPORT FOR PROJECT-SPECIFIC DETAILING REQUIREMENTS



www.LaminatorsInc.com

877.OMEGA.77

**PARTIAL SYSTEM ELEVATION**

**DRY SEAL INSTALLATION SYSTEM  
OVER GYPSUM (NON-STRUCTURAL) SHEATHING**

Date: 6/9/2022	Drawn By: JJM	Dwg. No.: DS-GYP-EL	Rev: 02
-------------------	------------------	------------------------	------------

SCREWS FASTENED THROUGH SHEATHING TO STRUCTURAL STUD FRAMING BEHIND (REFER TO NOTE 4C ON DETAIL DS-GYP-EL), TYP.

1-1/2" HAT CHANNEL (18 GA. MIN) PANEL STIFFENER; SPACING OF STIFFENERS TO BE BASED ON PROJECT SPECIFIC WIND LOADS (REFER TO NOTE 4D ON DETAIL DS-GYP-EL)

LAMINATORS APPROVED PANEL ADHESIVE APPLIED BETWEEN FACE OF HAT CHANNEL AND BACK OF PANEL; ADHESIVE APPLICATION TO BE BASED ON PROJECT SPECIFIC WIND LOADS (REFER TO NOTE 5 ON DETAIL DS-GYP-EL)

6mm OMEGA-LITE PANEL, TYP.

5/8" (MAX) EXTERIOR-GRADE, NON-STRUCTURAL (GYPSUM) SHEATHING

18 GA. (MIN) STEEL STUD FRAMING AT 16" O.C. (MAX) SPACING

AIR AND WATER BARRIER BY OTHERS

# SECTION

## DETAIL NOTES:

1. SPACING SHOWN BETWEEN SOME INSTALLATION SYSTEM COMPONENTS EXAGGERATED FOR CLARITY
2. PANEL STIFFENERS TO BE FASTENED TO SUBSTRATE PRIOR TO PANEL INSTALLATION; REFER TO DETAIL DS-GYP-EL FOR ADDITIONAL INFORMATION
3. FULL CONTACT OF PANEL ADHESIVE WITH BACK OF PANEL REQUIRED AT ALL APPLICATION LOCATIONS



www.LaminatorsInc.com

877.OMEGA.77

## PANEL STIFFENER DETAIL

## DRY SEAL INSTALLATION SYSTEM OVER GYPSUM (NON-STRUCTURAL) SHEATHING

Date:  
8/25/2020

Drawn By:  
JJM

Dwg. No.:  
DS-GYP-ST

Rev:  
00

NOTE: THIS DETAIL IS APPLICABLE TO ALL JOINTS INCLUDING THOSE WITHIN THE NFPA 285 ZONE

DRY SEAL INSTALLATION SYSTEM  
(1-7/8" NOM. DEPTH)

PANEL STIFFENERS NOT SHOWN FOR CLARITY; REQUIRED PANEL STIFFENING TO BE BASED ON PROJECT SPECIFIC WIND LOADS (REFER TO DETAIL DS-GYP-EL)

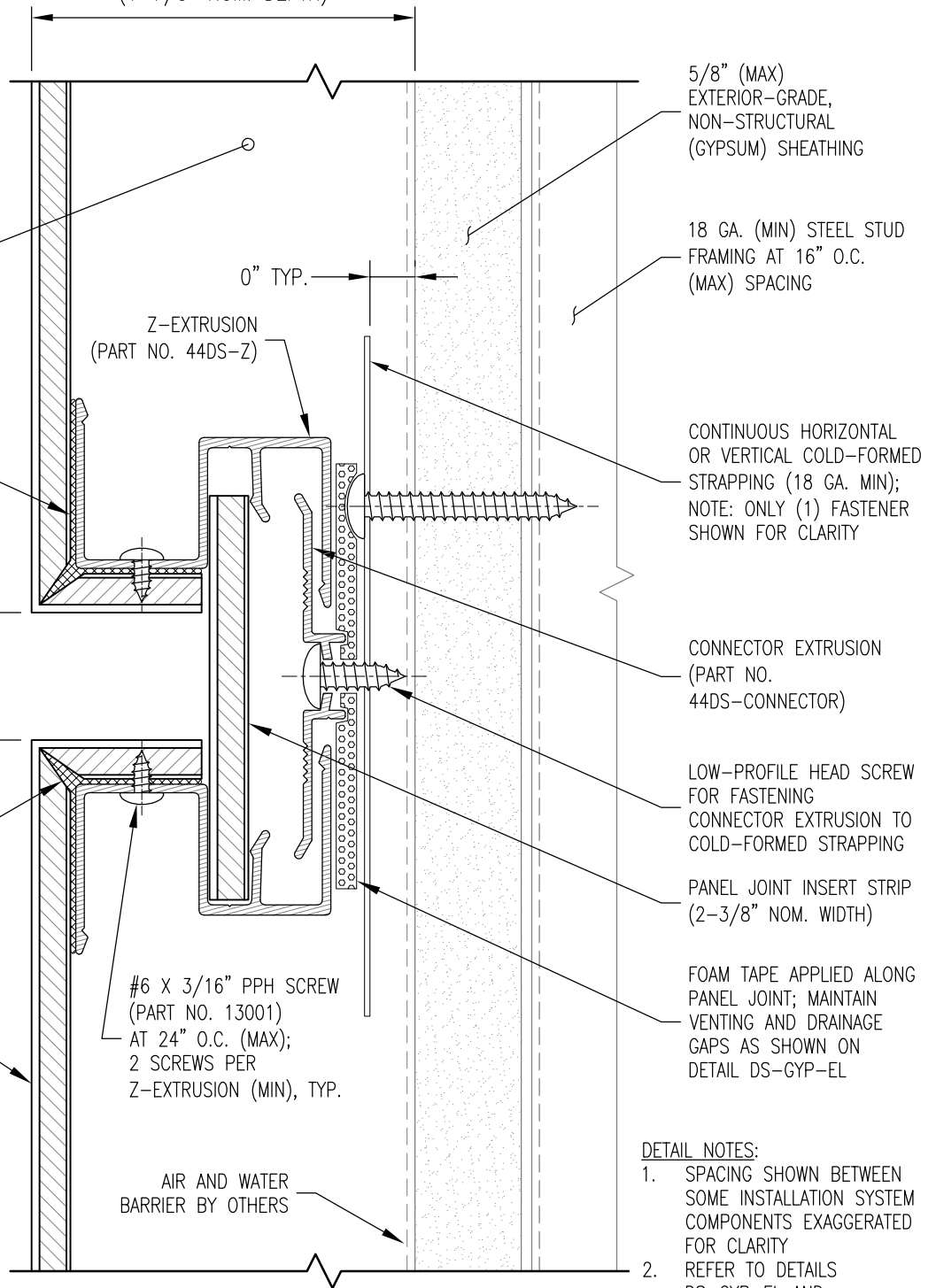
Z-EXTRUSION TO BE SET IN FULL BED OF FABRICATION SEALANT ALONG INSIDE PERIMETER OF PANEL CORNER AND RETURN LEG, TYP. (REFER TO LAMINATORS DRY SEAL INSTALLATION MANUAL)

LAMINATORS APPROVED FABRICATION SEALANT APPLIED TO PANEL ROUT PRIOR TO BENDING TO FORM PANEL RETURN LEG, TYP. (REFER TO LAMINATORS DRY SEAL INSTALLATION MANUAL)

6mm OMEGA-LITE PANEL, TYP.

EXTRUSION INSTALLATION:

- UP TO 60 PSF (ASD): FASTEN CONNECTOR (OR END-OF-RUN/STARTER) EXTRUSIONS TO COLD-FORMED STRAPPING USING (1) #8 X 1/2" (MIN) PPH SELF-DRILLING SCREW AT 12" O.C.



SECTION

DETAIL NOTES:

- SPACING SHOWN BETWEEN SOME INSTALLATION SYSTEM COMPONENTS EXAGGERATED FOR CLARITY
- REFER TO DETAILS DS-GYP-EL AND DS-GYP-ST FOR REQUIRED FOAM TAPE AND PANEL STIFFENER LAYOUT



www.LaminatorsInc.com

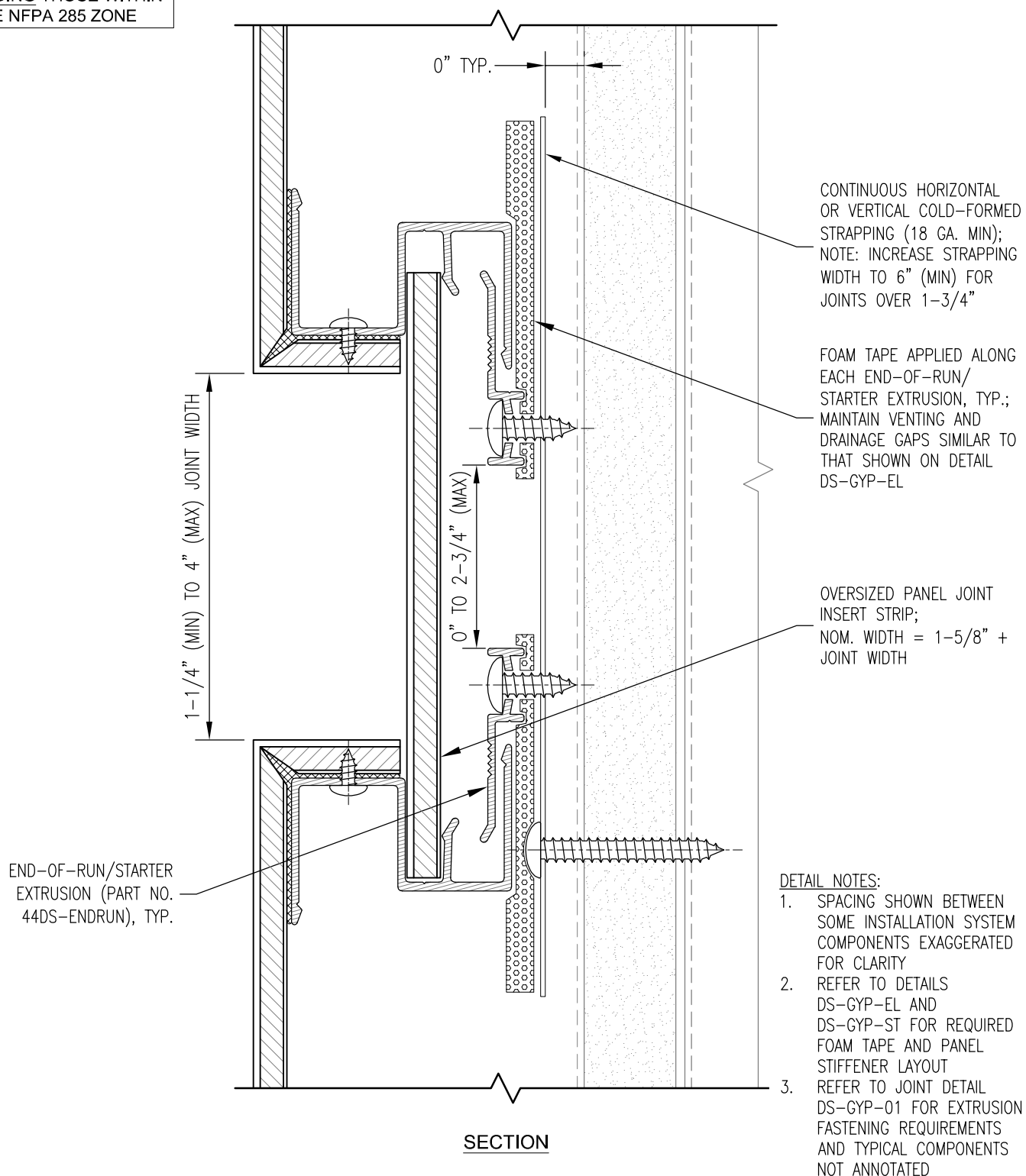
877.OMEGA.77

JOINT DETAIL

DRY SEAL INSTALLATION SYSTEM  
OVER GYPSUM (NON-STRUCTURAL) SHEATHING

Date: 12/3/2020	Drawn By: JJM	Dwg. No.: DS-GYP-01	Rev: 01
--------------------	------------------	------------------------	------------

NOTE: THIS DETAIL IS  
APPLICABLE TO ALL JOINTS  
INCLUDING THOSE WITHIN  
THE NFPA 285 ZONE



www.LaminatorsInc.com

877.OMEGA.77

JOINT DETAIL (CUSTOM WIDTH)

DRY SEAL INSTALLATION SYSTEM  
OVER GYPSUM (NON-STRUCTURAL) SHEATHING

Date:  
12/3/2020

Drawn By:  
JJM

Dwg. No.:  
DS-GYP-01A

Rev:  
01



NOTE: THIS DETAIL IS  
APPLICABLE TO ALL JOINTS  
INCLUDING THOSE WITHIN  
THE NFPA 285 ZONE

3/4" WIDE BASE STRIP OF  
OMEGA-LITE PANEL FASTENED TO  
CONNECTOR EXTRUSION USING  
#8 X 1" (MIN) SELF-DRILLING  
SCREWS AT 12" O.C.;  
COUNTERSINK HEAD OF SCREW  
FLUSH WITH SURFACE OF  
OMEGA-LITE

PANEL JOINT INSERT STRIP  
(1-3/8" ±1/8" NOM. WIDTH)

3/4"

1" LENGTH (MIN) OF 15 MIL VHB  
TAPE APPLIED AT 16" O.C.,  
2 LOCATIONS (MIN) PER INSERT  
STRIP; APPLY CONTINUOUS BEAD  
OF LAMINATORS APPROVED PANEL  
ADHESIVE BETWEEN TAPE  
LOCATIONS

ORIENT BASE STRIP WITH  
MILL FINISH FACING  
OUTWARD (FINISHED FACE  
TOWARD CONNECTOR  
EXTRUSION); VHB TAPE  
AND ADHESIVE APPLICATION  
MUST BE BETWEEN  
ADJACENT MILL FINISHES

DO NOT OVER-TIGHTEN OR  
OVERDRIVE SELF-DRILLING  
SCREW WHEN INSTALLING  
BASE STRIP; AVOID  
EXISTING CONNECTOR  
EXTRUSION SCREW  
LOCATIONS

#### DETAIL NOTES:

1. SPACING SHOWN BETWEEN  
SOME INSTALLATION SYSTEM  
COMPONENTS EXAGGERATED  
FOR CLARITY
2. REFER TO DETAILS  
DS-GYP-EL AND  
DS-GYP-ST FOR REQUIRED  
FOAM TAPE AND PANEL  
STIFFENER LAYOUT
3. REFER TO JOINT DETAIL  
DS-GYP-01 FOR EXTRUSION  
FASTENING REQUIREMENTS  
AND TYPICAL COMPONENTS  
NOT ANNOTATED

SECTION



www.LaminatorsInc.com

877.OMEGA.77

JOINT DETAIL (ALTERNATE INSERT STRIP INSTALL)

DRY SEAL INSTALLATION SYSTEM  
OVER GYPSUM (NON-STRUCTURAL) SHEATHING

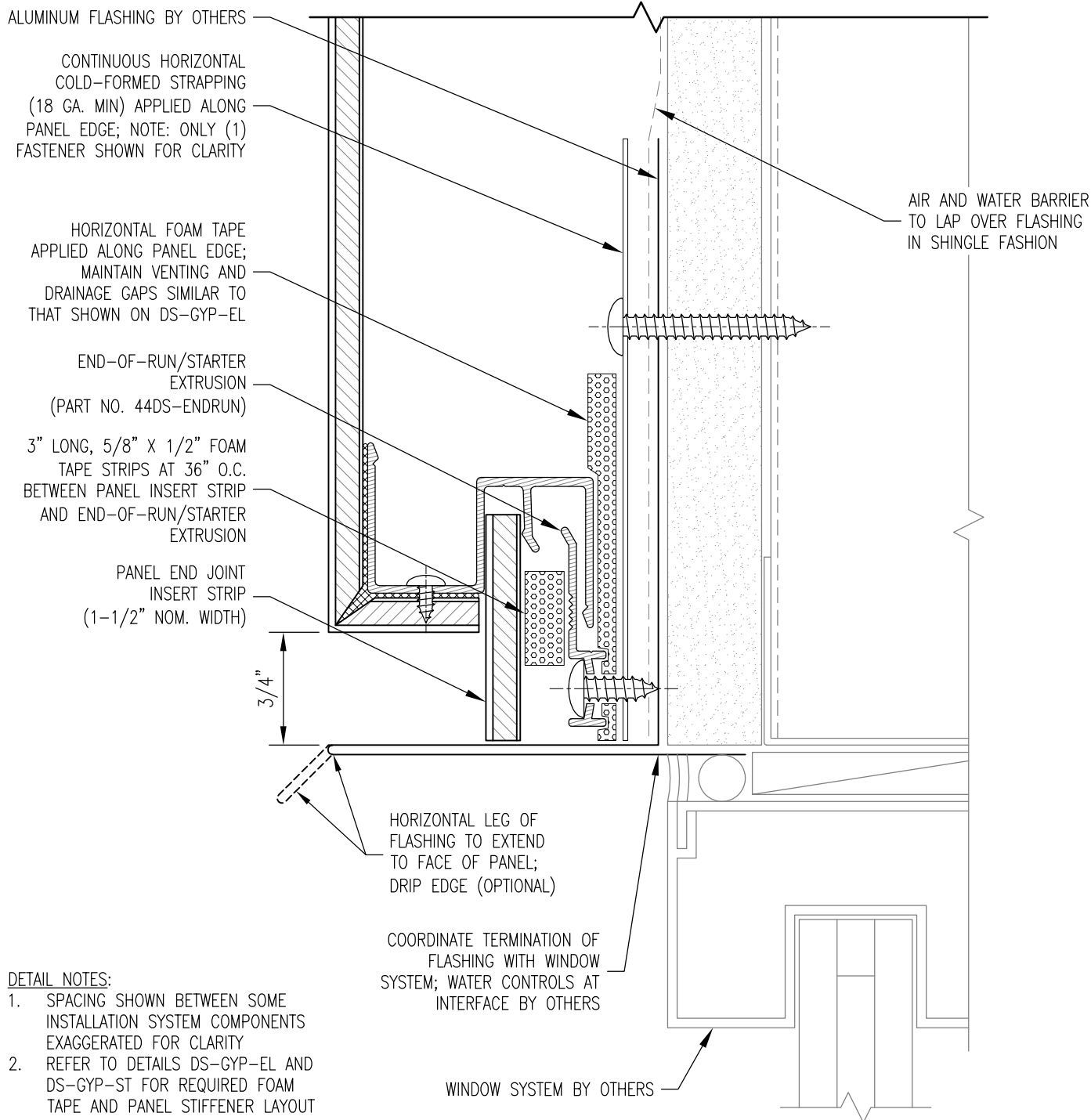
Date:  
12/3/2020

Drawn By:  
JJM

Dwg. No.:  
DS-GYP-01B

Rev:  
01





**DETAIL NOTES:**

1. SPACING SHOWN BETWEEN SOME INSTALLATION SYSTEM COMPONENTS EXAGGERATED FOR CLARITY
2. REFER TO DETAILS DS-GYP-EL AND DS-GYP-ST FOR REQUIRED FOAM TAPE AND PANEL STIFFENER LAYOUT
3. REFER TO JOINT DETAIL DS-GYP-01 FOR EXTRUSION FASTENING REQUIREMENTS AND TYPICAL COMPONENTS NOT ANNOTATED

**SECTION**

**WINDOW HEAD DETAIL**

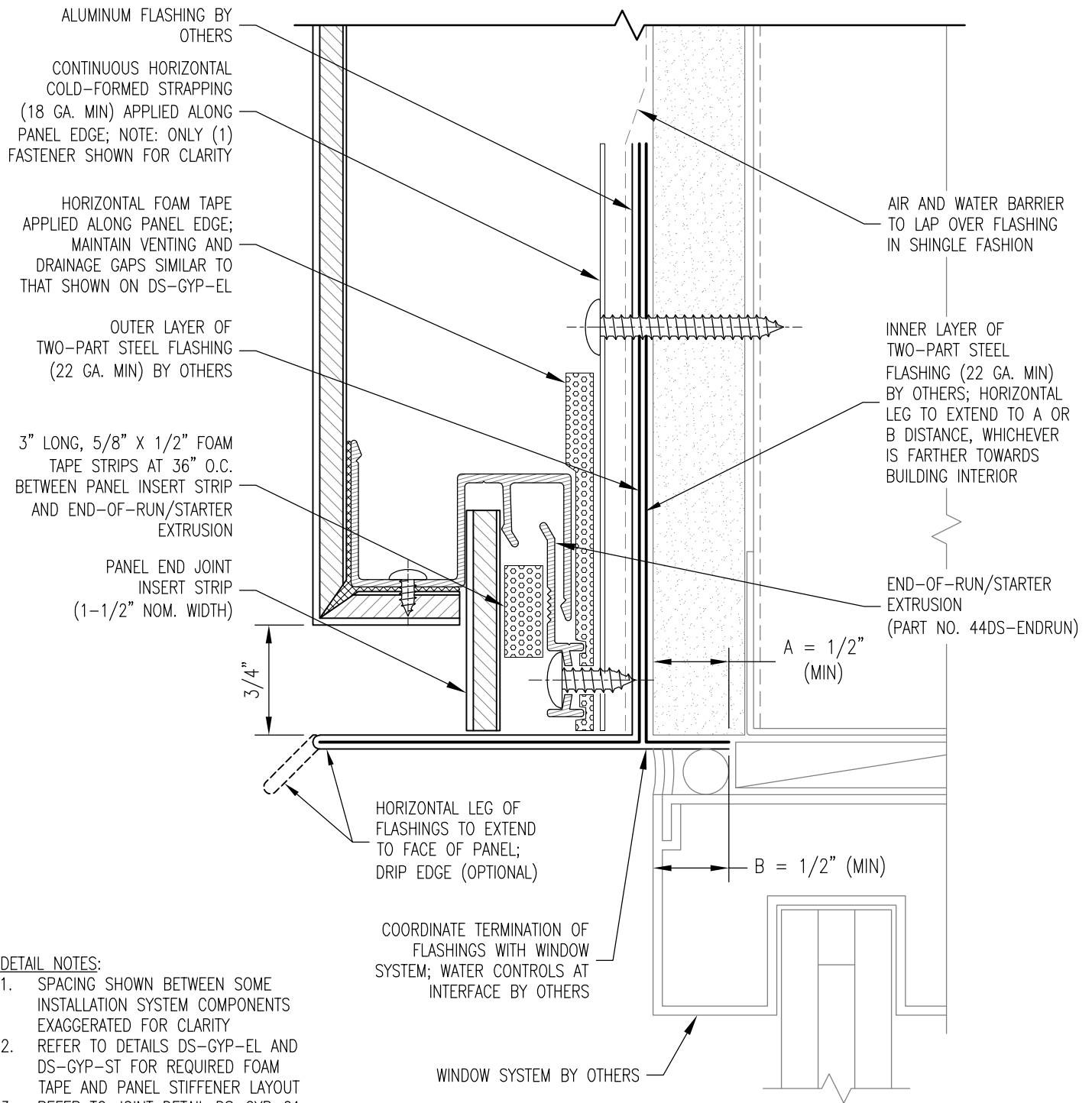
**DRY SEAL INSTALLATION SYSTEM  
OVER GYPSUM (NON-STRUCTURAL) SHEATHING**

Date:  
12/3/2020

Drawn By:  
JJM

Dwg. No.:  
DS-GYP-02

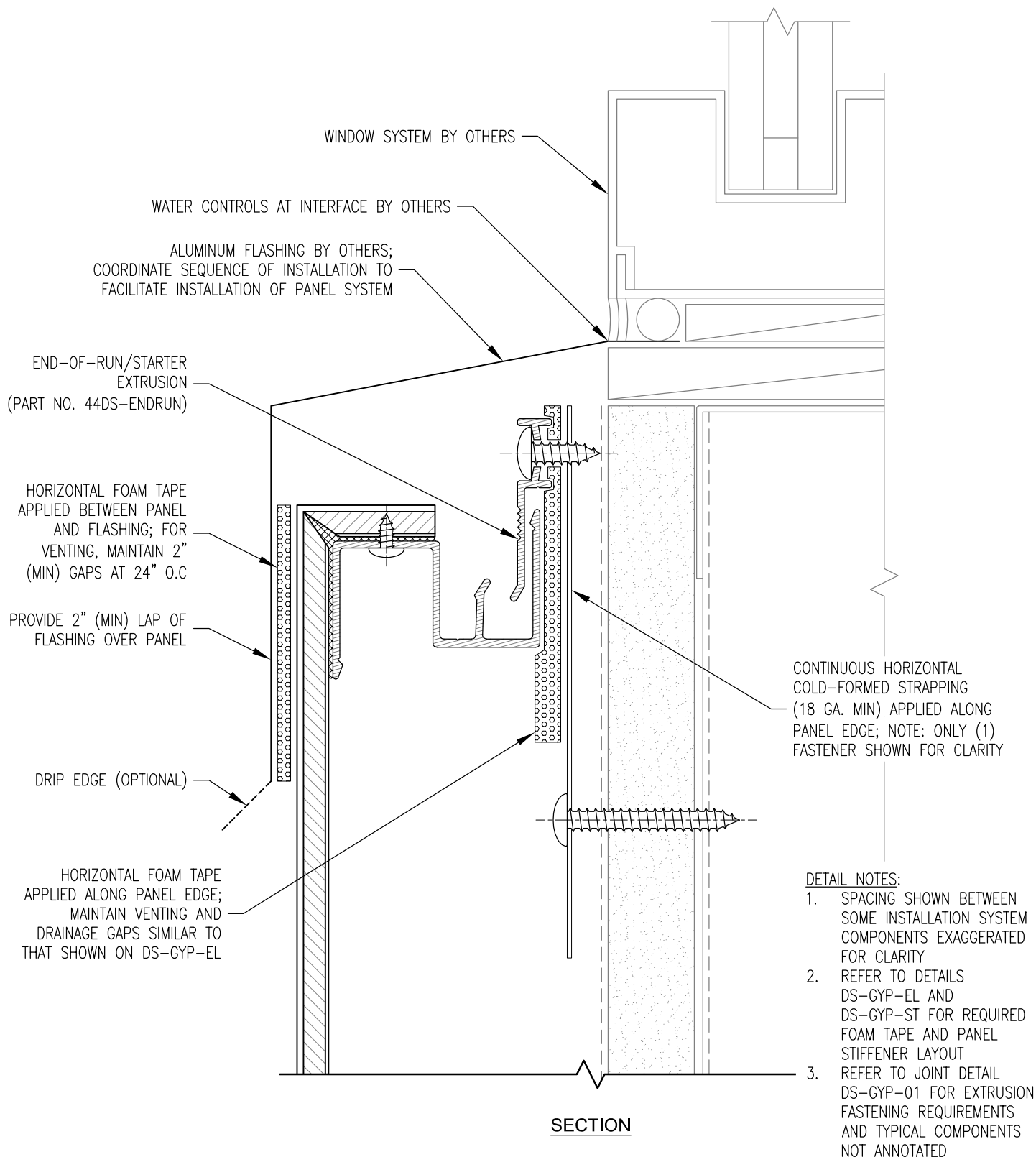
Rev:  
01



**DETAIL NOTES:**

1. SPACING SHOWN BETWEEN SOME INSTALLATION SYSTEM COMPONENTS EXAGGERATED FOR CLARITY
2. REFER TO DETAILS DS-GYP-EL AND DS-GYP-ST FOR REQUIRED FOAM TAPE AND PANEL STIFFENER LAYOUT
3. REFER TO JOINT DETAIL DS-GYP-01 FOR EXTRUSION FASTENING REQUIREMENTS AND TYPICAL COMPONENTS NOT ANNOTATED

**SECTION**



www.LaminatorsInc.com

877.OMEGA.77

## WINDOW SILL DETAIL

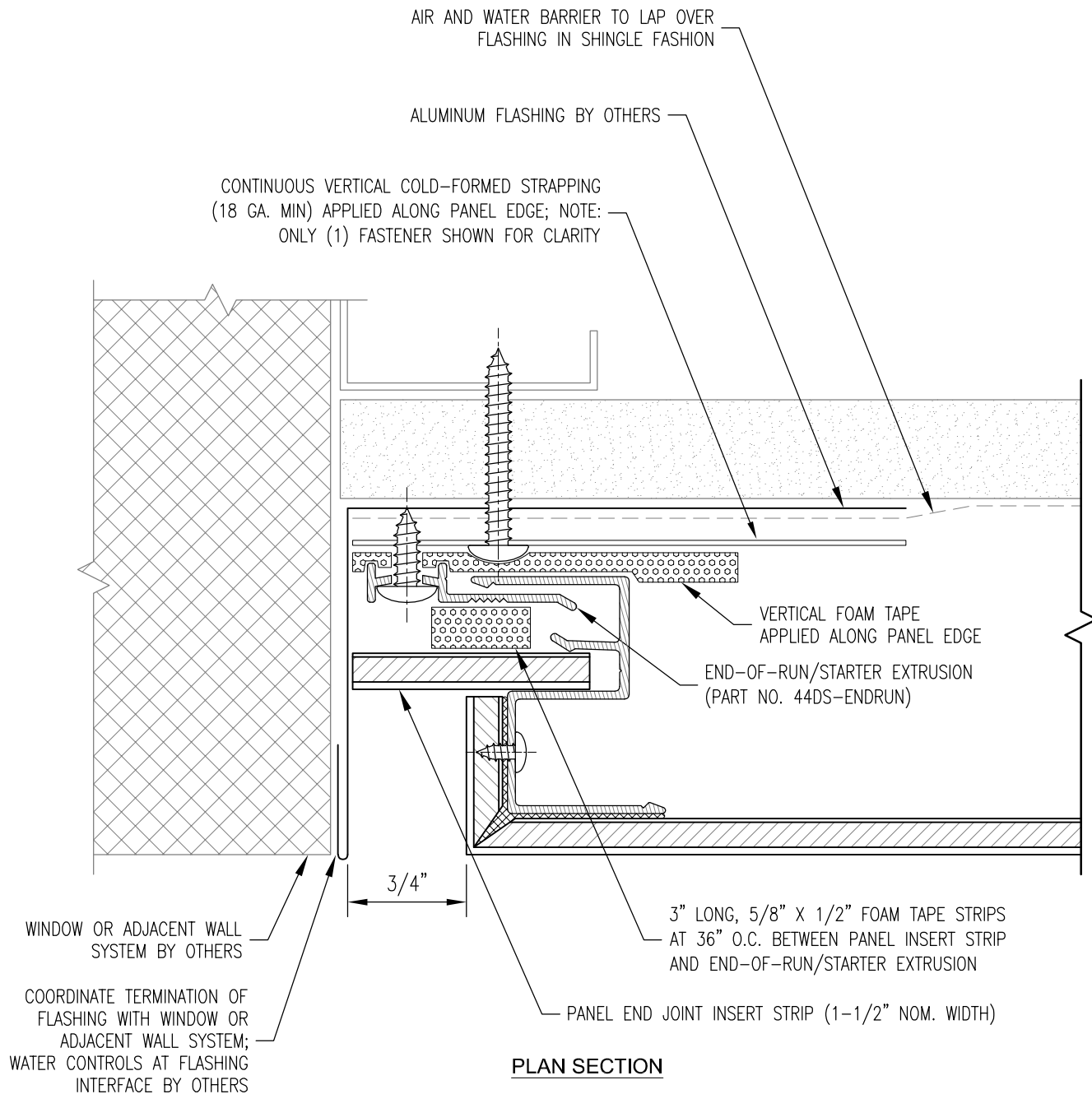
### DRY SEAL INSTALLATION SYSTEM OVER GYPSUM (NON-STRUCTURAL) SHEATHING

Date:  
12/3/2020

Drawn By:  
JJM

Dwg. No.:  
DS-GYP-03

Rev:  
01



**PLAN SECTION**

**DETAIL NOTES:**

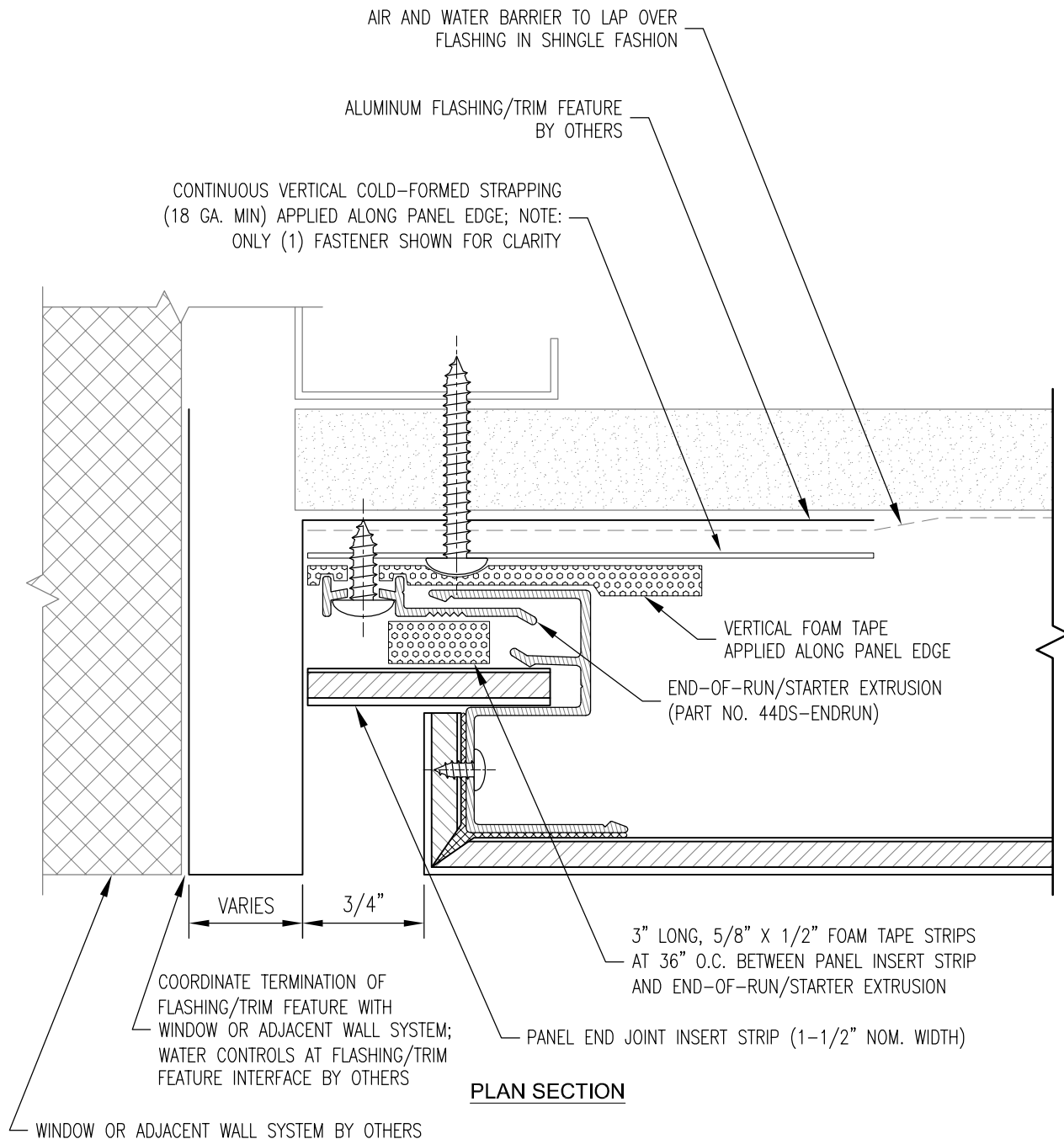
1. SPACING SHOWN BETWEEN SOME INSTALLATION SYSTEM COMPONENTS EXAGGERATED FOR CLARITY
2. REFER TO DETAILS DS-GYP-EL AND DS-GYP-ST FOR REQUIRED FOAM TAPE AND PANEL STIFFENER LAYOUT
3. REFER TO JOINT DETAIL DS-GYP-01 FOR EXTRUSION FASTENING REQUIREMENTS AND TYPICAL COMPONENTS NOT ANNOTATED



**WINDOW JAMB / VERTICAL EDGE DETAIL**

**DRY SEAL INSTALLATION SYSTEM  
OVER GYPSUM (NON-STRUCTURAL) SHEATHING**

Date:	Drawn By:	Dwg. No.:	Rev:
12/3/2020	JJM	DS-GYP-04	01



**DETAIL NOTES:**

1. SPACING SHOWN BETWEEN SOME INSTALLATION SYSTEM COMPONENTS EXAGGERATED FOR CLARITY
2. REFER TO DETAILS DS-GYP-EL AND DS-GYP-ST FOR REQUIRED FOAM TAPE AND PANEL STIFFENER LAYOUT
3. REFER TO JOINT DETAIL DS-GYP-01 FOR EXTRUSION FASTENING REQUIREMENTS AND TYPICAL COMPONENTS NOT ANNOTATED



www.LaminatorsInc.com

877.OMEGA.77

WINDOW JAMB / VERTICAL EDGE DETAIL w/ TRIM

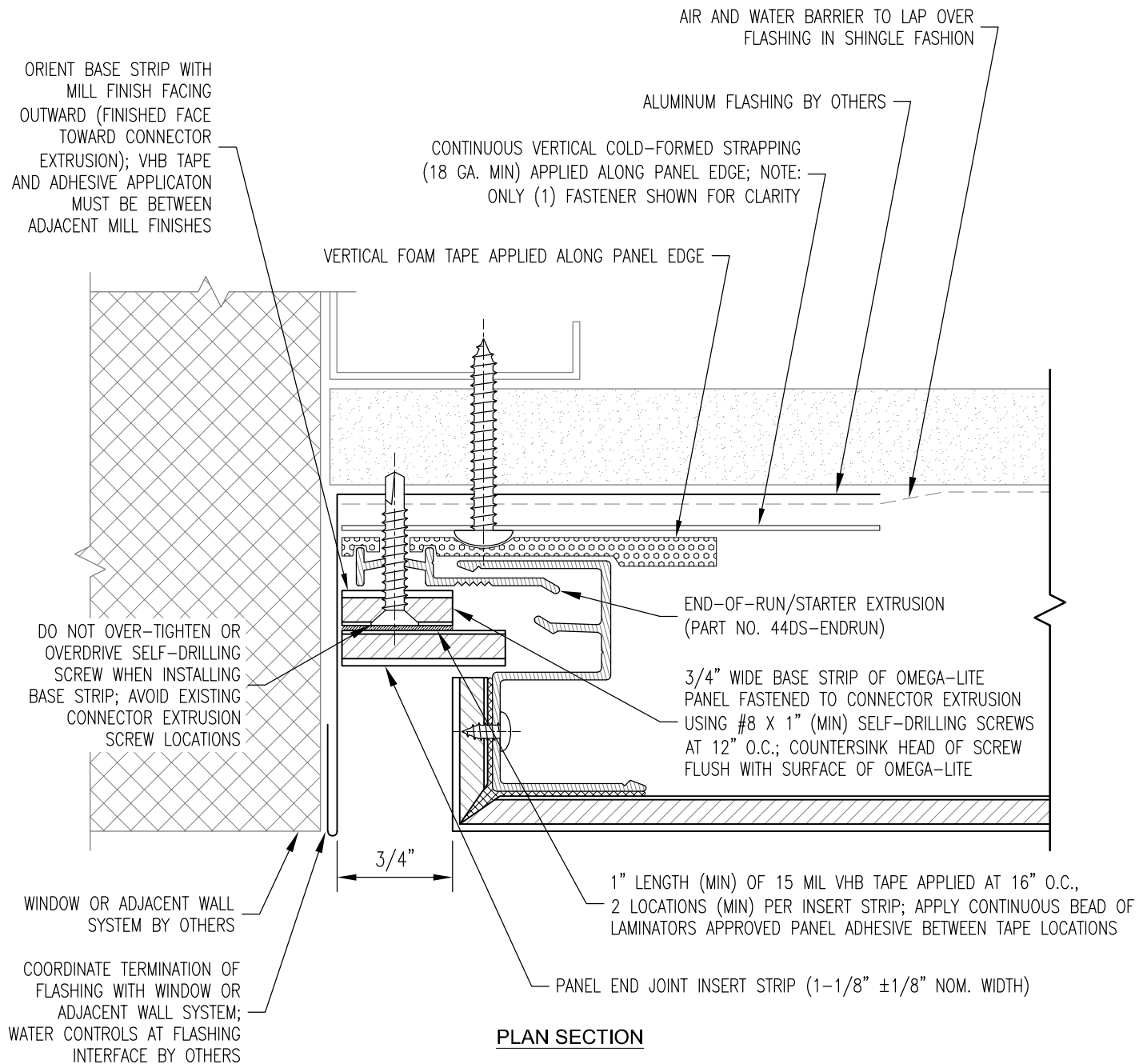
DRY SEAL INSTALLATION SYSTEM  
OVER GYPSUM (NON-STRUCTURAL) SHEATHING

Date:  
12/3/2020

Drawn By:  
JJM

Dwg. No.:  
DS-GYP-04A

Rev:  
01



**DETAIL NOTES:**

1. SPACING SHOWN BETWEEN SOME INSTALLATION SYSTEM COMPONENTS EXAGGERATED FOR CLARITY
2. REFER TO DETAILS DS-GYP-EL AND DS-GYP-ST FOR REQUIRED FOAM TAPE AND PANEL STIFFENER LAYOUT
3. REFER TO JOINT DETAIL DS-GYP-01 FOR EXTRUSION FASTENING REQUIREMENTS AND TYPICAL COMPONENTS NOT ANNOTATED



www.LaminatorsInc.com

877.OMEGA.77

**VERTICAL EDGE DETAIL (ALT. INSERT STRIP INSTALL)**

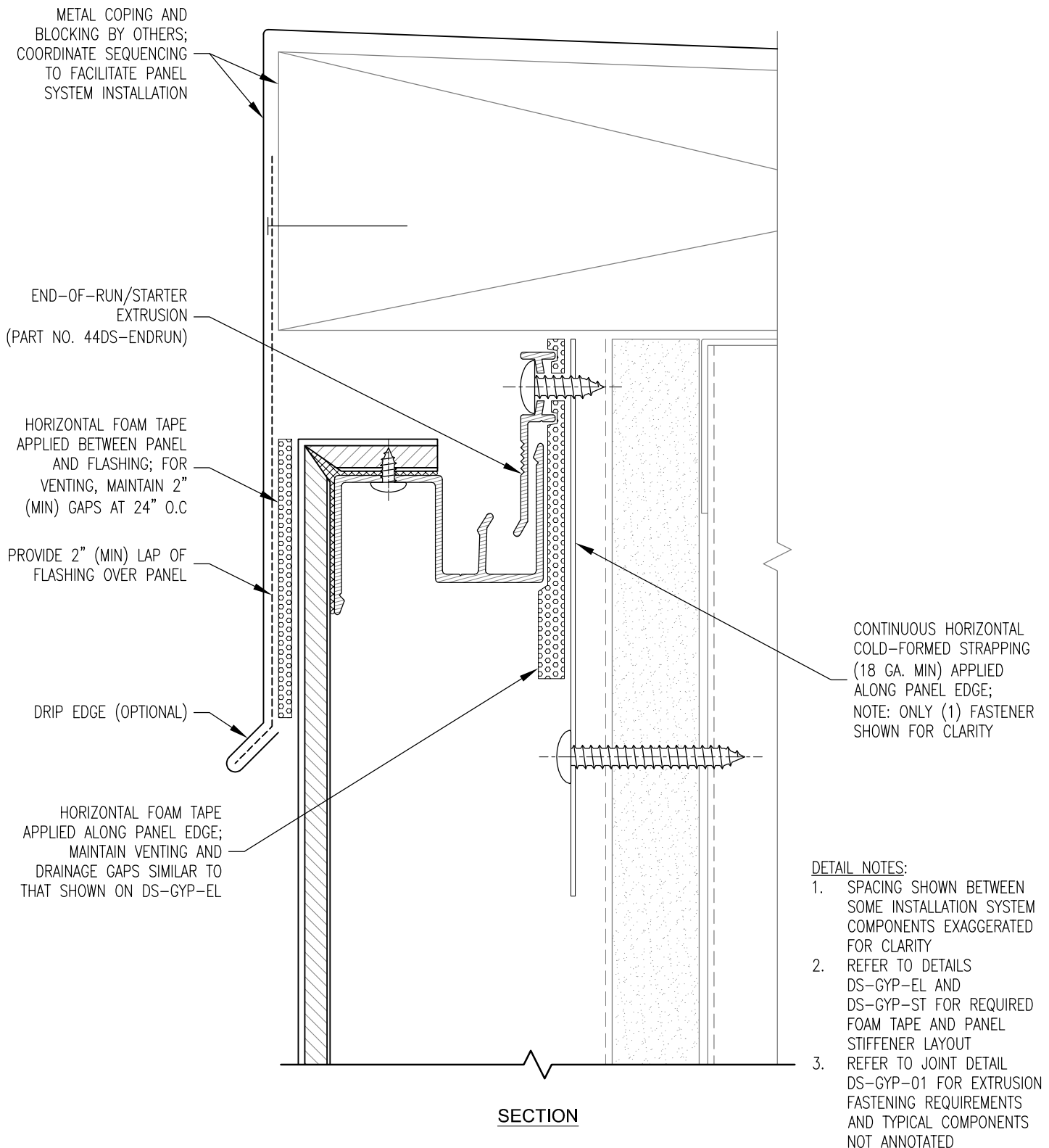
**DRY SEAL INSTALLATION SYSTEM  
OVER GYPSUM (NON-STRUCTURAL) SHEATHING**

Date:  
12/3/2020

Drawn By:  
JJM

Dwg. No.:  
DS-GYP-04B

Rev:  
01



www.LaminatorsInc.com

877.OMEGA.77

## TOP OF WALL DETAIL

### DRY SEAL INSTALLATION SYSTEM OVER GYPSUM (NON-STRUCTURAL) SHEATHING

Date:  
12/3/2020

Drawn By:  
JJM

Dwg. No.:  
DS-GYP-05

Rev:  
01



CONTINUOUS HORIZONTAL  
COLD-FORMED STRAPPING  
(18 GA. MIN) APPLIED ALONG  
PANEL EDGE; NOTE: ONLY (1)  
FASTENER SHOWN FOR CLARITY

HORIZONTAL FOAM TAPE  
APPLIED ALONG PANEL EDGE;  
MAINTAIN VENTING AND  
DRAINAGE GAPS SIMILAR TO  
THAT SHOWN ON DS-GYP-EL

END-OF-RUN/STARTER  
EXTRUSION  
(PART NO. 44DS-ENDRUN)

3" LONG, 5/8" X 1/2" FOAM  
TAPE STRIPS AT 36" O.C.  
BETWEEN PANEL INSERT STRIP  
AND END-OF-RUN/STARTER  
EXTRUSION

PANEL END JOINT  
INSERT STRIP  
(1-1/2" NOM. WIDTH)

3/4"

CONTINUOUS BUTYL  
SEALANT BETWEEN METAL  
FLASHING AND GRADE

AIR AND WATER BARRIER  
TO LAP OVER FLASHING  
IN SHINGLE FASHION

ALUMINUM FLASHING BY  
OTHERS; COORDINATE  
W/ INSTALLATION  
REQUIREMENTS FOR  
INTERFACE WITH GRADE  
CONDITIONS

GRADE

**SECTION**

**DETAIL NOTES:**

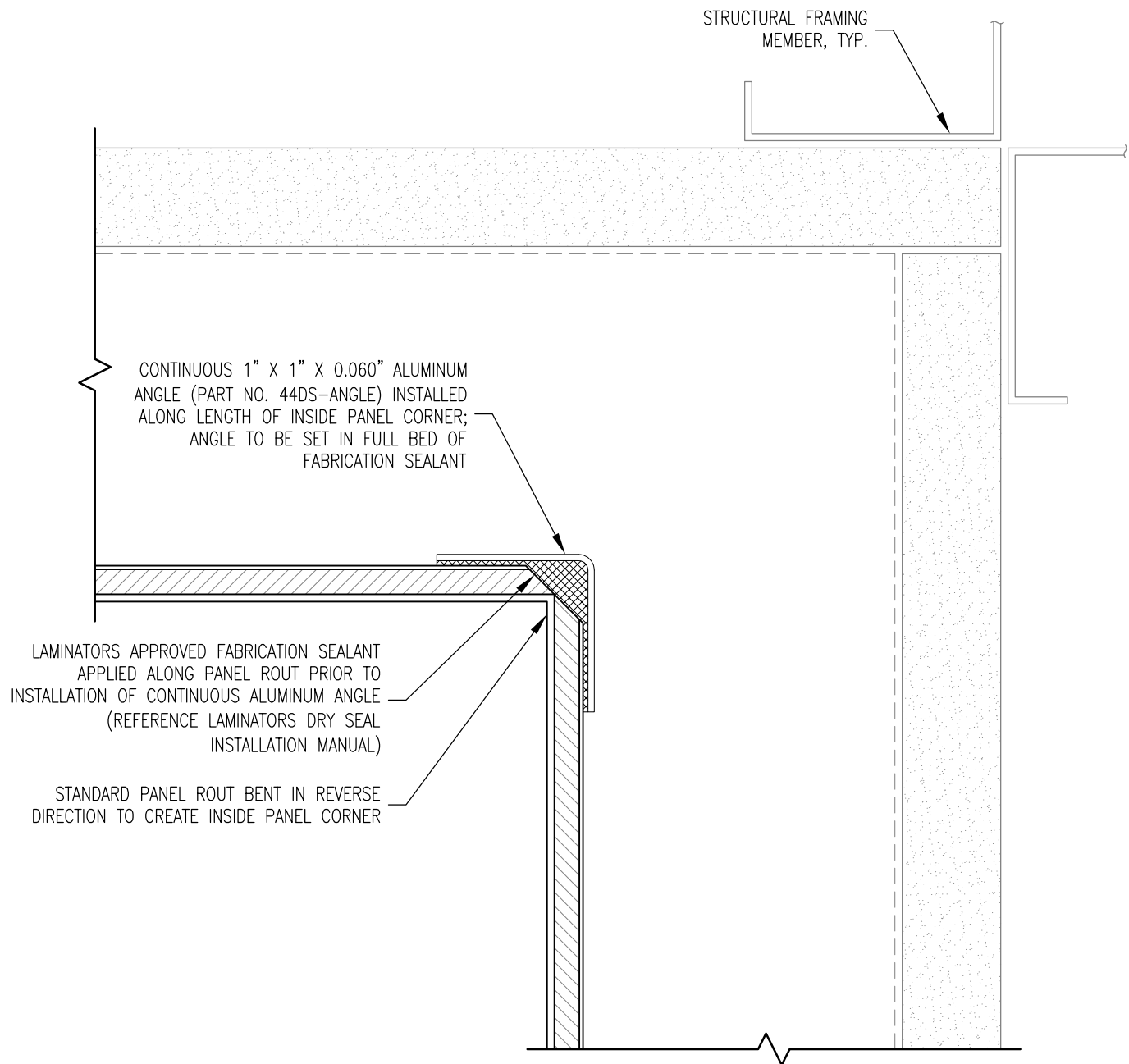
1. SPACING SHOWN BETWEEN SOME INSTALLATION SYSTEM COMPONENTS EXAGGERATED FOR CLARITY
2. REFER TO DETAILS DS-GYP-EL AND DS-GYP-ST FOR REQUIRED FOAM TAPE AND PANEL STIFFENER LAYOUT
3. REFER TO JOINT DETAIL DS-GYP-01 FOR EXTRUSION FASTENING REQUIREMENTS AND TYPICAL COMPONENTS NOT ANNOTATED



**BASE OF WALL (GRADE) DETAIL**

**DRY SEAL INSTALLATION SYSTEM  
OVER GYPSUM (NON-STRUCTURAL) SHEATHING**

Date: 12/3/2020	Drawn By: JJM	Dwg. No.: DS-GYP-06	Rev: 01
--------------------	------------------	------------------------	------------



PLAN SECTION

DETAIL NOTES:

1. SPACING SHOWN BETWEEN SOME INSTALLATION SYSTEM COMPONENTS EXAGGERATED FOR CLARITY
2. REFER TO DETAILS DS-GYP-EL AND DS-GYP-ST FOR REQUIRED FOAM TAPE AND PANEL STIFFENER LAYOUT
3. REFER TO JOINT DETAIL DS-GYP-01 FOR EXTRUSION FASTENING REQUIREMENTS AND TYPICAL COMPONENTS NOT ANNOTATED

NOTE: THIS DETAIL IS ALSO APPLICABLE FOR SOFFIT-TO-WALL TRANSITIONS



INSIDE CORNER DETAIL

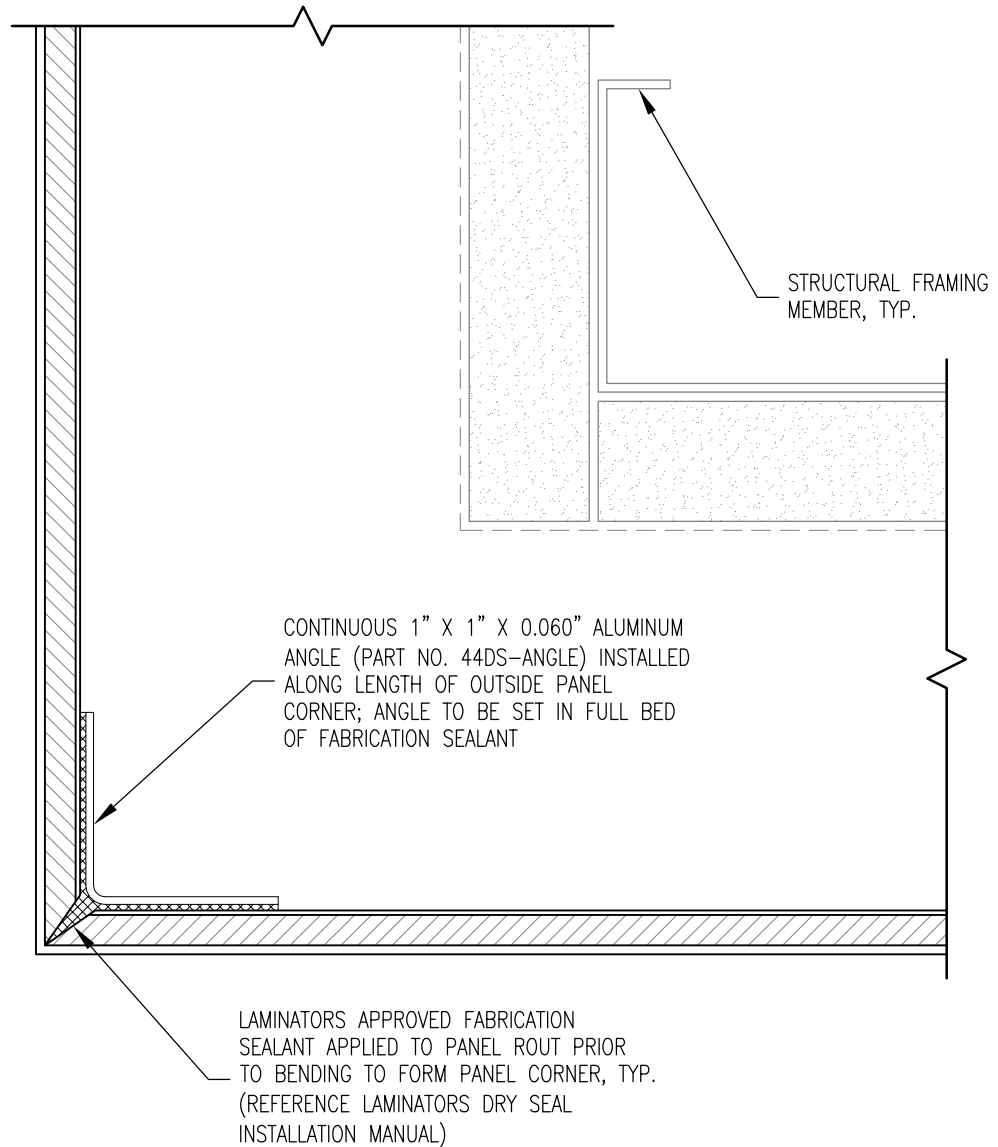
DRY SEAL INSTALLATION SYSTEM  
OVER GYPSUM (NON-STRUCTURAL) SHEATHING

Date:  
8/25/2020

Drawn By:  
JJM

Dwg. No.:  
DS-GYP-07

Rev:  
00



#### PLAN SECTION

#### DETAIL NOTES:

1. SPACING SHOWN BETWEEN SOME INSTALLATION SYSTEM COMPONENTS EXAGGERATED FOR CLARITY
2. REFER TO DETAILS DS-GYP-EL AND DS-GYP-ST FOR REQUIRED FOAM TAPE AND PANEL STIFFENER LAYOUT
3. REFER TO JOINT DETAIL DS-GYP-01 FOR EXTRUSION FASTENING REQUIREMENTS AND TYPICAL COMPONENTS NOT ANNOTATED

NOTE: REFER TO DETAIL DS-GYP-09 FOR FASCIA-TO-SOFFIT TRANSITIONS



www.LaminatorsInc.com

877.OMEGA.77

#### OUTSIDE CORNER DETAIL

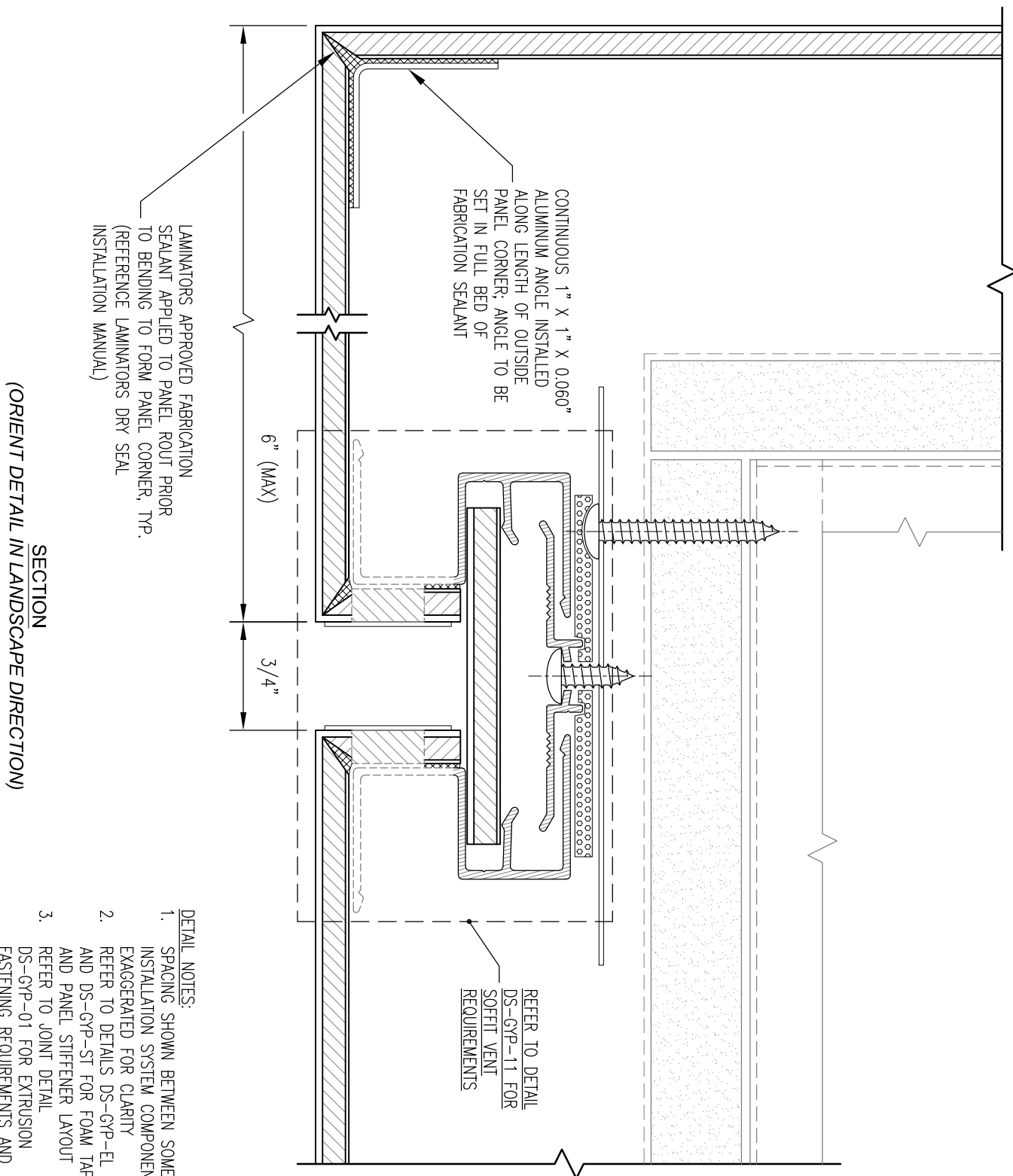
DRY SEAL INSTALLATION SYSTEM  
OVER GYPSUM (NON-STRUCTURAL) SHEATHING

Date:  
8/25/2020

Drawn By:  
JJM

Dwg. No.:  
DS-GYP-08

Rev:  
00



**DETAIL NOTES:**

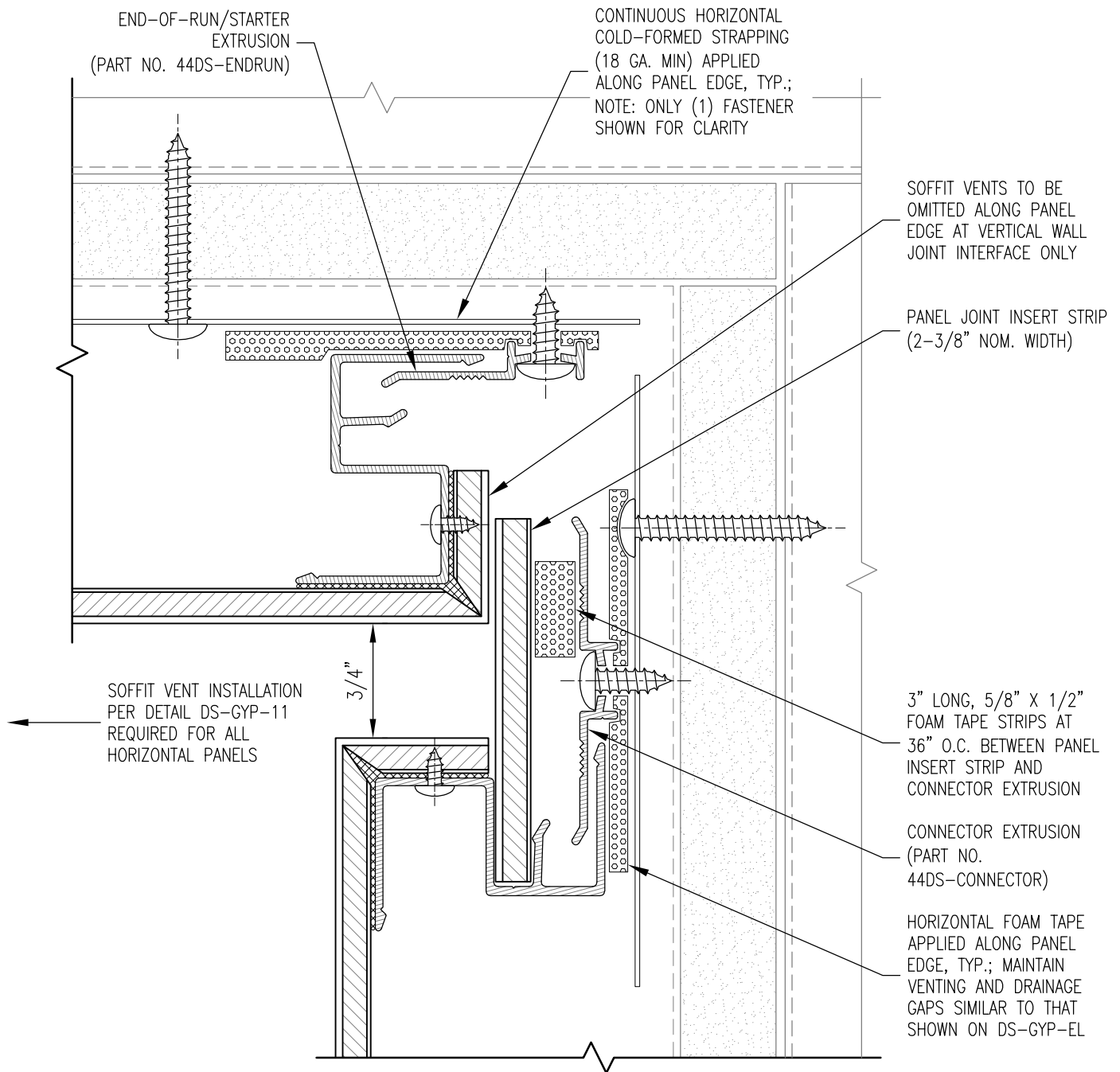
1. SPACING SHOWN BETWEEN SOME INSTALLATION SYSTEM COMPONENTS EXAGGERATED FOR CLARITY
2. REFER TO DETAILS DS-GYP-EL AND DS-GYP-ST FOR FOAM TAPE AND PANEL STIFFENER LAYOUT
3. REFER TO JOINT DETAIL DS-GYP-01 FOR EXTRUSION FASTENING REQUIREMENTS AND TYPICAL COMPONENTS NOT ANNOTATED



**FASCIA-TO-SOFFIT TRANSITION DETAIL**

**DRY SEAL INSTALLATION SYSTEM  
OVER GYPSUM (NON-STRUCTURAL) SHEATHING**

Date: 8/25/2020	Drawn By: JJM	Dwg. No.: DS-GYP-09	Rev: 00
--------------------	------------------	------------------------	------------



**DETAIL NOTES:**

1. SPACING SHOWN BETWEEN SOME INSTALLATION SYSTEM COMPONENTS EXAGGERATED FOR CLARITY
2. REFER TO DETAILS DS-GYP-EL AND DS-GYP-ST FOR REQUIRED FOAM TAPE AND PANEL STIFFENER LAYOUT
3. REFER TO JOINT DETAIL DS-GYP-01 FOR EXTRUSION FASTENING REQUIREMENTS AND TYPICAL COMPONENTS NOT ANNOTATED

**SECTION**

**NOTE: THIS DETAIL IS ALSO APPLICABLE FOR INSIDE CORNER TRANSITIONS**



www.LaminatorsInc.com

877.OMEGA.77

**SOFFIT-TO-WALL TRANSITION DETAIL w/ JOINT**

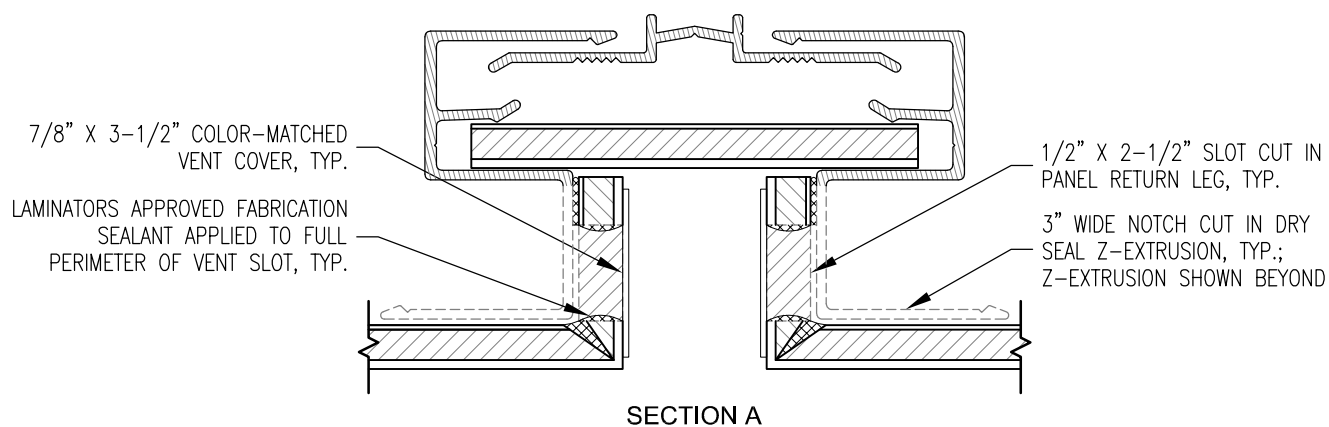
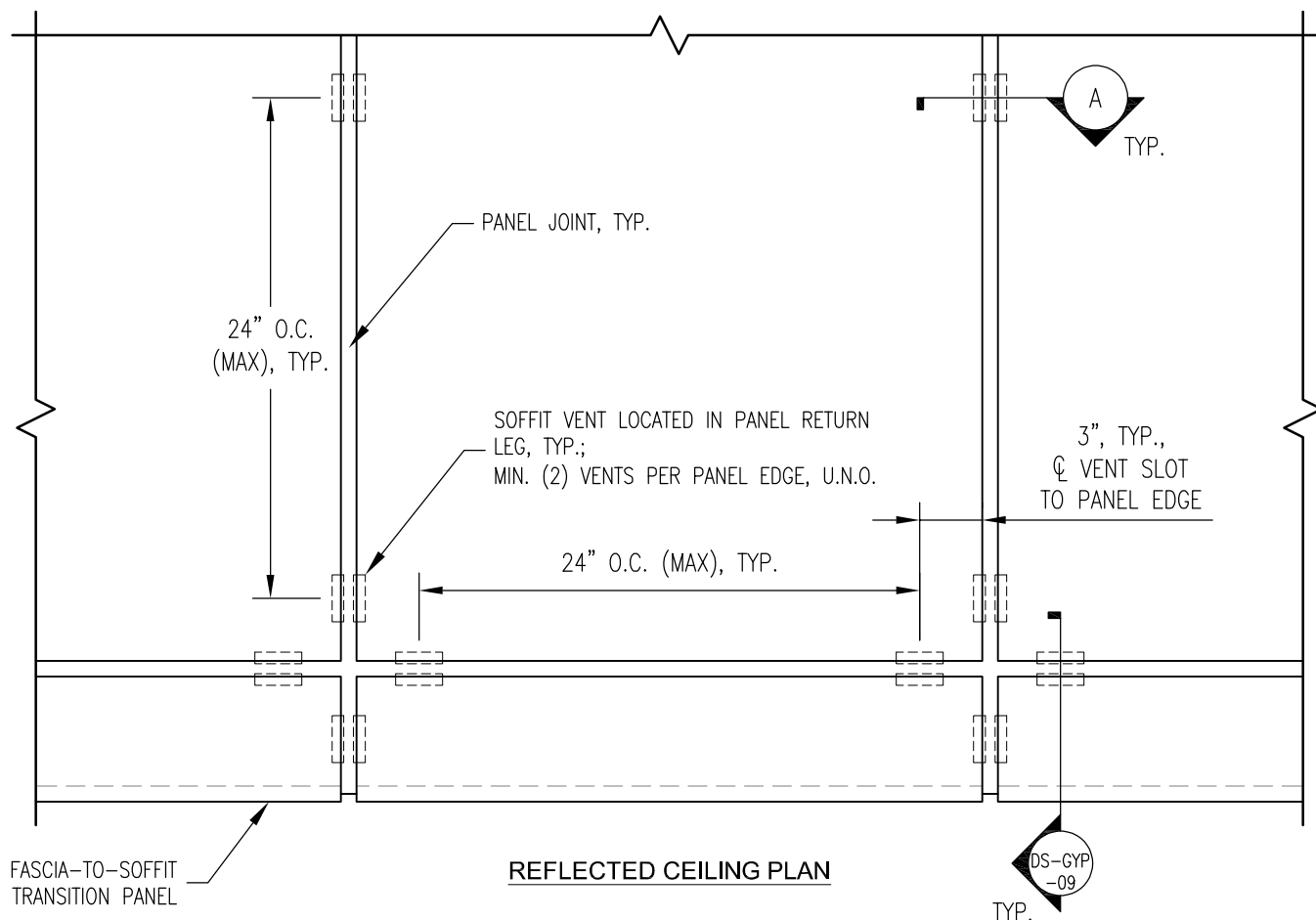
**DRY SEAL INSTALLATION SYSTEM  
OVER GYPSUM (NON-STRUCTURAL) SHEATHING**

Date:  
12/3/2020

Drawn By:  
JJM

Dwg. No.:  
DS-GYP-10

Rev:  
01



**DETAIL NOTES:**

1. FASTEN VENT COVER TO PANEL RETURN LEG USING (2) 1/8" DIA. ALUMINUM BUTTONHEAD BLIND RIVETS (NOT SHOWN IN SECTION A) INSTALLED THRU PANEL RETURN LEG ON EACH SIDE OF SLOT, TYP.
2. FOR PANEL EDGE DIMENSIONS 18" AND SMALLER, ONLY (1) VENT LOCATION REQUIRED; CENTER VENT LOCATION ALONG PANEL EDGE

**SOFFIT VENT REQUIREMENTS**

**DRY SEAL INSTALLATION SYSTEM  
OVER GYPSUM (NON-STRUCTURAL) SHEATHING**

Date: 8/25/2020	Drawn By: JJM	Dwg. No.: DS-GYP-11	Rev: 00
--------------------	------------------	------------------------	------------