

OMEGA-LITE®

ACM PANELS & INSTALLATION SYSTEMS



GO BEYOND THE PANEL... AND GO TO THE NEXT LEVEL.

Laminators Incorporated does more than offer ACM panels.

We manufacture aluminum composite panels and installation systems designed to maintain a consistent and long-lasting professional look. With a variety of standard colors and finishes, coupled with the ability to meet any custom color requirement, design options are limited only by your imagination.

For over 50 years, we have taken pride in delivering innovative, high-quality installation systems and superior customer service. Discover for yourself why building owners, architects, general contractors, distributors, fabricators, and installers turn to Laminators for all their architectural panel needs.

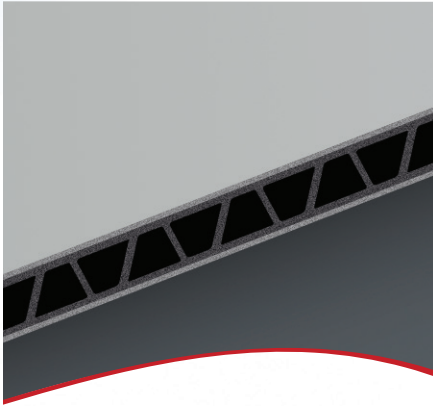
*At Laminators, we believe in fully integrated, fully tested solutions. We're ready to help you go beyond the panel... and go to the next level. Call **800.523.2347** to learn more or visit **LaminatorsInc.com**.*



OMEGA-LITE®

When you're looking for a highly decorative yet durable solution for exterior wall surfaces, choose Omega-Lite ACM panels—they will not rot, swell, corrode, or delaminate. Best of all, with our installation systems they make total installed costs extremely competitive.

- Composed of a lightweight polypropylene corrugated core between two finished aluminum sheets
- Non-absorbent, water-resistant, and easy to maintain
- Custom color panels and caulks available to meet any corporate need
- Available in smooth or stucco-embossed finishes
- Class A fire rating and NFPA 285 compliant... **passed all tests without the need for a special fire-retardant core!**
- Curved structures are possible with the combination of Omega-Lite and Omega-Flex™ panels which provide the ability to wrap a radius



Panels feature a corrugated polypropylene core for the highest strength-to-weight ratio of any competitive ACM panel. Painted aluminum sheets cover a black, plastic, water-resistant core.

Typical Applications

- Fascias
- Soffits
- Decorative Storefronts
- Corporate ID Projects
- Canopies
- Clean Rooms
- Sunrooms
- Equipment Enclosures

Top-side horizontal applications are not recommended.



Unlike other ACM manufacturers, Laminators offers various engineered and tested systems using our Omega-Lite ACM panels. Our proprietary systems can easily be combined with other systems, masonry and glass for instance, to provide a variety of design options.

TECHNICAL DATA

Construction of Standard Omega-Lite

Sizes*	Core	Backer	Face Thickness	Surface Face Finish	Colors
4 ft. x 8 ft. 4 ft. x 10 ft. 4 ft. x 12 ft.	Corrugated Polypropylene	Mill finish 0.013 in. aluminum backer, or same as face for 2-sided construction	0.022 to 0.032 in.	Smooth and/or stucco-embossed aluminum	PVDF/Kynar 500®, Designer Series ⁺ , and custom colors
			0.022 to 0.024 in.	Smooth and/or stucco-embossed aluminum	Polyester and Natural Series ⁺

*5 ft. widths also available in select colors. ⁺Smooth only. Refer to Architectural Color Chart for specific size and finish availability.

References & Testing

AAMA 501.1	Standard Test Method for Water Penetration of Windows, Curtain Walls, and Doors Using Dynamic Pressure	ASTM D1929	Standard Test Method for Determining Ignition Temperature of Plastics
AAMA 508	Voluntary Test Method and Specification for Pressure Equalized Rain Screen Wall Cladding Systems	ASTM D2126	Standard Test Method for Response of Rigid Cellular Plastics to Thermal and Humid Aging
AAMA 509	Voluntary Test and Classification Method for Drained and Back Ventilated Rain Screen Wall Cladding Systems	ASTM D3273	Standard Test Method for Resistance to Growth of Mold on the Surface of Interior Coatings in an Environmental Chamber
AAMA 2605	Voluntary Specification, Performance Requirements and Test Procedures for Superior Performing Organic Coatings on Aluminum Extrusions and Panels	ASTM E8	Standard Test Methods for Tension Testing of Metallic Materials
ASTM B209	Standard Specification for Aluminum and Aluminum-Alloy Sheet and Plate	ASTM E84	Standard Test Method for Surface Burning Characteristics of Building Materials
ASTM B221	Standard Specification for Aluminum and Aluminum-Alloy Extruded Bars, Rods, Wire, Profiles, and Tubes	ASTM E90	Standard Test Method for Laboratory Measurement of Airborne Sound Transmission Loss of Building Partitions and Elements
ASTM C209	Standard Test Methods for Cellulosic Fiber Insulating Board	ASTM E96	Standard Test Methods for Water Vapor Transmission of Materials
ASTM C518	Standard Test Method for Steady-State Thermal Transmission Properties by Means of the Heat Flow Meter Apparatus	ASTM E283	Standard Test Method for Determining Rate of Air Leakage Through Exterior Windows, Curtain Walls, and Doors Under Specified Pressure Differences Across the Specimen
ASTM C920	Standard Specification for Elastomeric Joint Sealants	ASTM E330	Standard Test Method for Structural Performance of Exterior Windows, Doors, Skylights, and Curtain Walls by Uniform Static Air Pressure Difference
ASTM C1193	Standard Guide for Use of Joint Sealants	ASTM E331	Standard Test Method for Water Penetration of Exterior Windows, Skylights, Doors, and Curtain Walls by Uniform Static Air Pressure Difference
ASTM C1289	Standard Specification for Faced Rigid Cellular Polyisocyanurate Thermal Insulation Board	ASTM E1233	Structural Performance of Exterior Windows, Curtain Walls, and Doors by Cyclic Air Pressure Differential
ASTM D635	Standard Test Method for Rate of Burning and/or Extent and Time of Burning of Plastics in a Horizontal Position	NFPA 285	Standard Fire Test Method for Evaluation of Fire Propagation Characteristics of Exterior Non-Load-Bearing Wall Assemblies Containing Combustible Components
ASTM D1621	Standard Test Method for Compressive Properties of Rigid Cellular Plastics		
ASTM D1654	Standard Test Method for Evaluation of Painted or Coated Specimens Subjected to Corrosive Environments		
ASTM D1781	Standard Test Method for Climbing Drum Peel for Adhesives		

TECHNICAL DATA

Specifications (Based on 6mm panel with 0.032 in. face and 0.013 in. backer.)

Thickness	Weight	Fabrication Tolerances	R-Value	Thermal Expansion
6mm (Special-order thicknesses available upon request)	0.99 lb./ft. ² (+/-)	Length and Width: +/- 1/16 in. Squareness: +/- 1/16 in. Thickness: +/- 1/64 in.	R-0.50 hr. ft. ² °F/BTU	Temp: 13.1×10^{-6} in./in./°F

Fire Rating: Based on ASTM E84: Class A, Flame Spread Index = 15, Smoke Developed Index = 90

Bond Test: Based on ASTM D1781

Approvals/Compliance

Miami-Dade County Product Control Approved

- Miami-Dade County, Florida, NOA #20-0720.03, Expiration 08/2025
- +/- 120 psf design wind load
- Approval pertains only to Omega-Lite panels installed in the following systems:
 - 1-Piece, Tight-Fit Molding Installation System
 - Clip & Caulk Installation System
 - Rout & Return Installation System
 - Dry Seal Installation System
 - Large missile impact approved over exterior gypsum wallboard (Dry Seal only)

NFPA 285 (National Fire Protection Association) Compliant

Evaluation Services Listings (ESL)

- ESL-1248 (NFPA 285 Standard): 1-Piece, Tight-Fit Molding with BDV and Clip & Caulk with BDV over both Omega CI and gypsum
- ESL-1249 (AAMA 509 Standard): 1-Piece, Tight-Fit Molding with BDV over Omega CI and Clip & Caulk with BDV over both Omega CI and gypsum
- ESL-1250 (ASTM E330 Standard): 1-Piece, Tight-Fit Molding with BDV over Omega CI and Clip & Caulk with BDV over both Omega CI and gypsum
- ESL-1251 (ASTM D1781 Standard): Omega-Lite ACM Panels
- ESL-1252 (ASTM E331 Standard): 1-Piece, Tight-Fit Molding with BDV and Clip & Caulk with BDV over Omega CI
- ESL-1253 (ASTM E84 Standard): Omega-Lite ACM Panels
- ESL-1254 (ASTM E283 Standard): 1-Piece, Tight-Fit Molding with BDV and Clip & Caulk with BDV over Omega CI



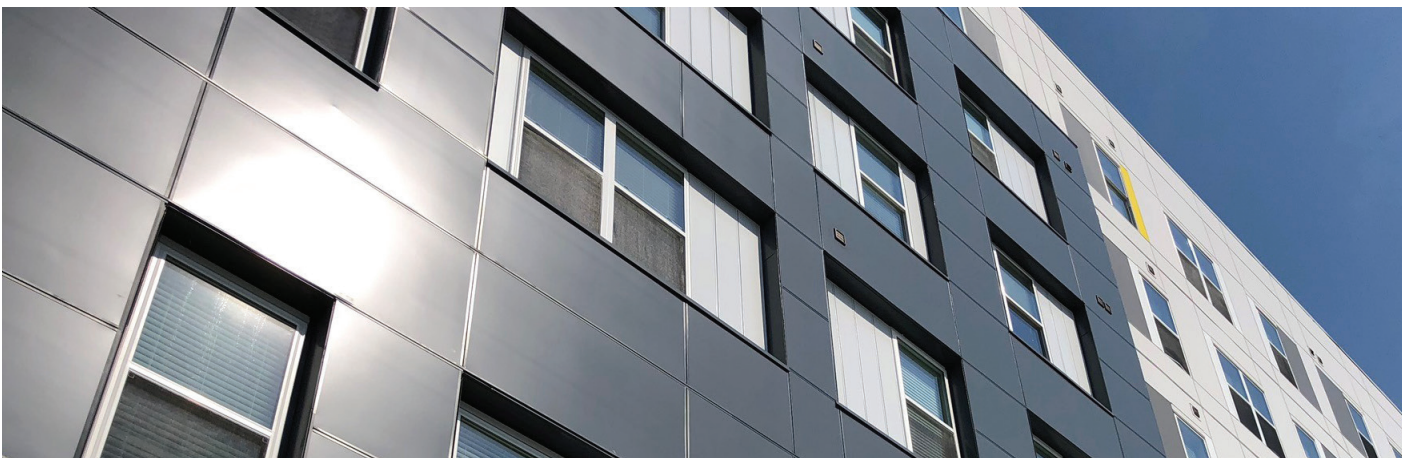
THE OPTIMAL SOLUTION: BACK-DRAINED & VENTILATED + OMEGA CI®

Laminators is the first manufacturer to develop a fully designed, integrated, and tested ACM panel and installation system.

Combining Laminators' installation systems with Omega-Lite ACM and Omega CI rigid insulated panels provides a simple design solution for installations requiring continuous insulation while maintaining code requirements for water control and NFPA 285 fire resistance.

We offer different panel installation systems to give you the look and performance you need at a cost your budget will love. Panels can be measured and cut at the jobsite or in a shop environment. Cut-to-size panel lengths and widths can be ordered to minimize waste and reduce labor and material expenses.

- Fully integrated, high-performing wall systems
- Faster installation when compared to alternative continuous insulation options
- Easy solutions to code conflicts (NFPA 285, Continuous Insulation)
- Fully supported, pre-engineered solutions to meet delegated design requirements
- Faster finished wall assembly with reliable scheduling
- Omega-Lite systems install directly to Omega CI's plywood sheathing (Omega CI is optional)
 - Eliminates complex detailing and extensive planning associated with most proprietary solutions for installation of ACM veneer systems over continuous insulation
 - Sub-framing components can easily be adjusted during construction providing installers with the flexibility necessary for a successful installation (field-fabricated installation systems only)
- Gives designers and installers the freedom to choose any air and water barrier product that can be installed over plywood sheathing (NFPA 285 requirements were met using Barritech VP)
- Virtually all system components are available from Laminators, making us your one-stop shop
- Omega-Lite panels offer a highly decorative, strong, and durable surface finish for exterior wall surfaces
- Laminators can provide you with installation training and technical support to ensure that your project is a success



OMEGA CI: A CLOSER LOOK

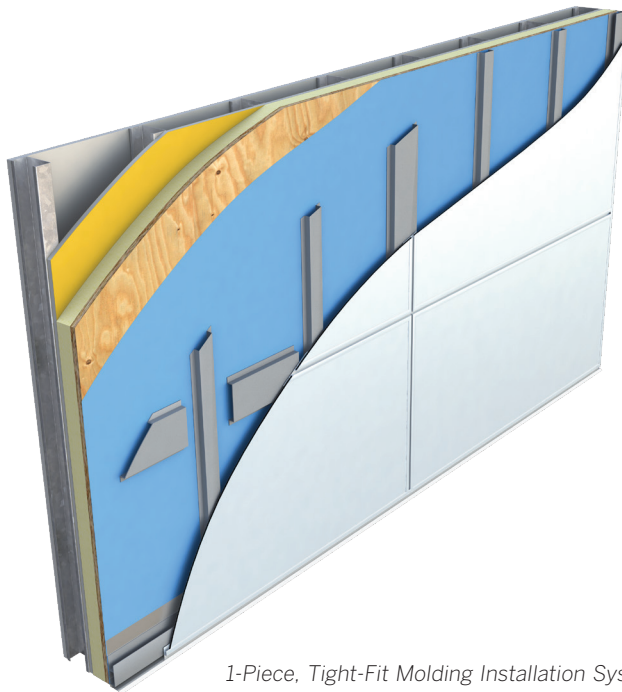
Omega CI is a rigid insulation panel comprising a closed-cell polyiso foam core bonded to a premium performance coated glass backer and a 5/8" fire-treated plywood face. Omega CI is available in 4' x 8' sheets in 2.1" thickness (contact Laminators technical support for alternative thickness availability).

Benefits

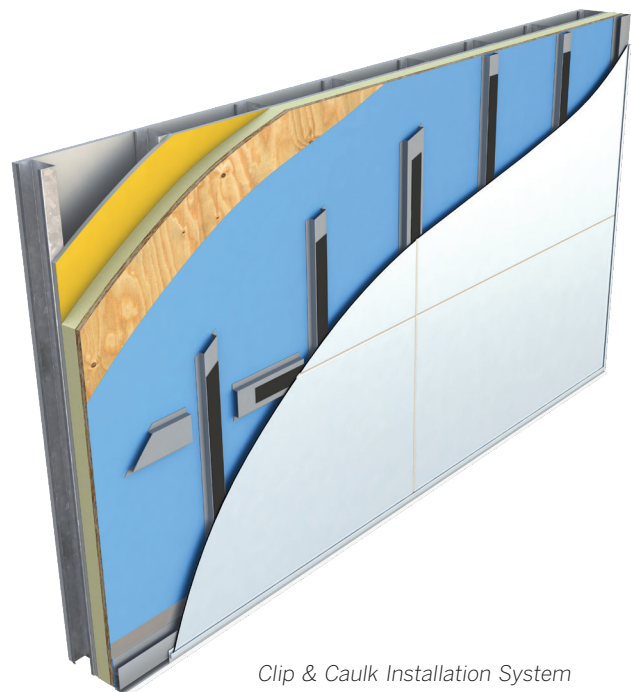
- Ease of installation: product is installed in a similar manner to traditional plywood sheathing
- Labor savings: combines the installation of continuous insulation and structural sheathing into one component
- Single-source responsibility for product delivery
- Simplifies attachment of ACM veneer systems by providing a continuous structural substrate
- 2.1" thickness provides R-9.6 for IECC/ASHRAE 90.1 prescriptive continuous insulation requirement
- NFPA 285 compliant for installations on Type I, II, III, and IV construction

Testing & Approvals

- Class A fire rating and NFPA 285 compliant with all installation systems



1-Piece, Tight-Fit Molding Installation System with Omega CI



Clip & Caulk Installation System with Omega CI

INSTALLATION SYSTEMS

Unlike other ACM manufacturers, Laminators offers various engineered and tested systems using our Omega-Lite ACM panels. Our proprietary systems can be easily combined with other systems, masonry and glass for instance, to provide a variety of design options. Omega-Lite installed in both our field-fabricated and shop-fabricated installation systems meets NFPA 285 and Miami-Dade County Product Control requirements. **Our 6mm panel systems passed NFPA 285 without the need for a special fire-retardant core.**

Laminators offers unparalleled flexibility with multiple installation systems to fit your project and regional conditions. We offer many choices to consider when deciding on the look of your project.

FIELD-FABRICATED SYSTEMS

Our new and improved back-drained and ventilated field-fabricated installation systems (1-Piece, Tight-Fit Molding, Clip & Caulk) provide designers and installers the optimal solution for the challenges associated with achieving a code-compliant exterior wall envelope. Simple and flexible, these new systems allow fast, easy fabrication directly on the jobsite, saving time and money by allowing installers to adapt to as-built conditions during installation.

1-Piece, Tight-Fit Molding

Laminators' 1-Piece, Tight-Fit Molding installation system achieves a traditional yet high-tech appearance at an affordable cost. This easy-to-install progressive installation system uses aluminum moldings to encapsulate panel edges.

- Both flat and reveal moldings are available providing two different design options for panel joints
- No exposed sealant joints to maintain
- Option to provide mitered joint intersections



Clip & Caulk™

Laminators' Clip & Caulk installation system provides the traditional Rout & Return "look" without the hassle and cost of fabricating panels.

- Cost-effective yet attractive finish
- Color-matched or contrasting joint sealants available



INSTALLATION SYSTEMS

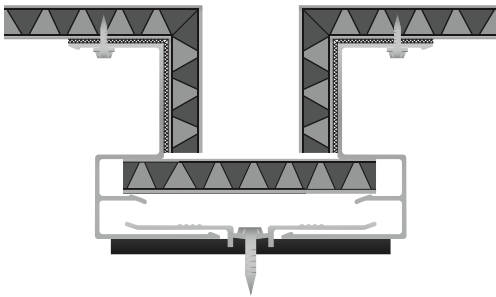
SHOP-FABRICATED SYSTEMS

With our shop-fabricated installation systems (Dry Seal, Rout & Return), panels can be prefabricated in our shop and delivered directly to the jobsite, or an experienced fabricator can fabricate the panels in a shop environment.

Dry Seal

Laminators' Dry Seal installation system features a deep reveal "look" without caulk at the joints, creating a crisp, clean appearance.

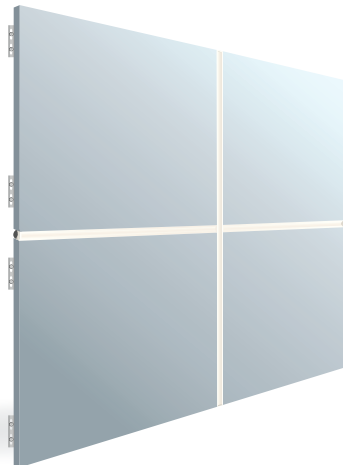
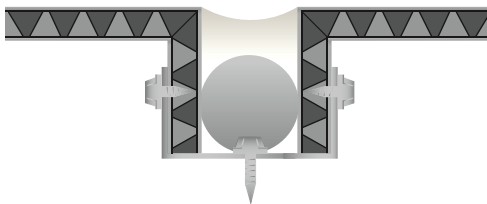
- Creates a pressure-equalized rainscreen wall system that compartmentalizes the air cavity and allows for drainage and ventilation, reducing moisture-related issues within the wall cavity
- Passed AAMA 508 testing standards



Rout & Return

Laminators' Rout & Return installation system gives a sophisticated yet high-tech look.

- "Deep-Reveal" or flush monolithic appearance
- Color-matched caulk gives a beautiful monochromatic look; contrasting caulk can be used with eye-pleasing results



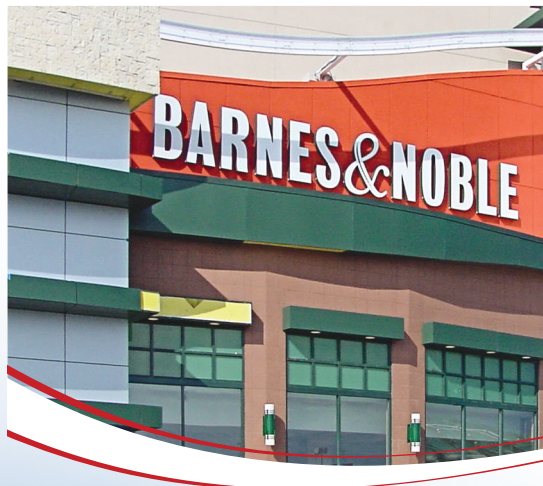
Visit **LaminatorsInc.com** to download our complete set of installation guides, CAD drawings, specifications, and technical data sheets, as well as to learn more about our systems.

COLORS & FINISHES

Vivid colors add new dimension to great architectural design. The right colors create visual interest, enhance beauty, and promote a sense of balance. Laminators Incorporated offers **more than 50 stunning color choices** to complement your design, covering a range of aesthetics and applications. We can also create or match custom colors to your specifications, making it easy to maintain consistency in corporate identity programs.

In addition to the wide range of color choices, panels are available in several finishes ranging from smooth wood grains to bright metallic hues. Metal color chips and samples are also available by request.

Additional specialty colors and patterns available by special order.



Visit **LaminatorsInc.com** to view or download our Architectural Color Chart for a full list of colors and finishes. To speak with an architectural systems representative, please call **800.523.2347**.



ARCHITECTURAL SERVICES

Unique in the industry, Laminators is a full-service manufacturing company offering complete, innovative, turnkey solutions for your architectural cladding needs.

As manufacturers and fabricators of architectural panels, we understand all the nuances of performing take-offs, fabricating for time- and cost-efficiency, and more.

Whether your project is in the design, specification, production, or installation stage, our experienced staff can assist your team along the way, including:

- Engineering
- Shop Drawings
- Fabrication
- Field Training
- Take-Offs

Whether you are a building owner, architect, general contractor, distributor, fabricator, or installer, you can count on Laminators to deliver the highest-quality installation systems and customer service in the industry.



Visit [LaminatorsInc.com](https://www.laminatorsinc.com) to see our full Architectural Project Portfolio.



3255 Penn Street, Hatfield, PA 19440-1731

800.523.2347 | LaminatorsInc.com