



LAMINATORS

Composite Panel Solutions

HIGH PERFORMANCE COMPOSITE PANELS

Customizable Panels for Your Application



Icehouse Shanties
Truck Bed Covers
Exhibits Boating
Gaming
Motorsports Kiosks
Garage Doors
Equipment Enclosures Dividers
Art Surfaces Tradeshow Marine Theatrical Sets
Clean Rooms Agricultural Centers
Race Car Splitters
POP Displays Partitions
Recreational Vehicles Shipping Containers
Theatrical Props Industrial Packaging
Grow Rooms

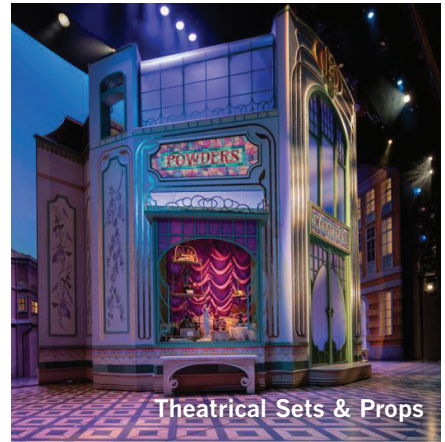
Customizable to the Task at Hand

While our composites are best known in the architectural and sign industries, Laminators Incorporated also works with manufacturers to provide high-quality, customizable composite panels that are used for their specific interior and exterior applications.

Our composite panels are comprised of aluminum or vinyl sheets bonded to various high-grade cores (high-density corrugated polypropylene, solid polyethylene, insulated foam, or wood), making them strong, lightweight, and water-resistant.

These panels have material bonded to both sides, providing excellent rigidity, strength, and durability. They will not swell, corrode, rot, wick water, or delaminate—perfect for all your application needs.

Unique in the composite panel industry, Laminators is a full-service manufacturing and fabrication company offering innovative turnkey solutions to our customers. We believe in providing value and superior customer service. Our forward-thinking processes and forward-looking products have made us a leading manufacturer for over 50 years.



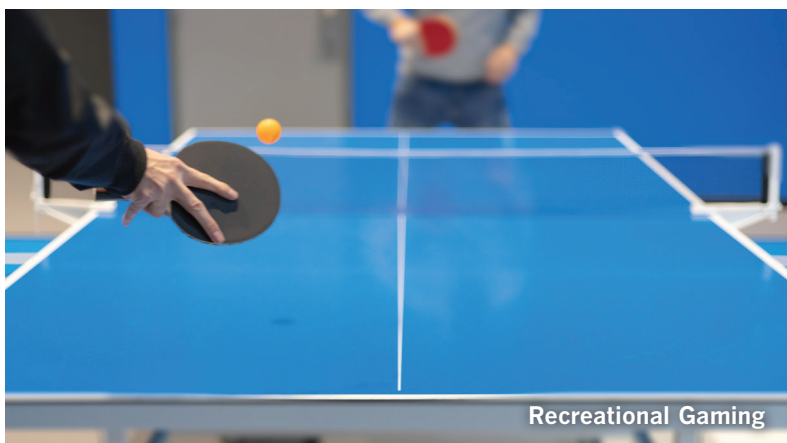
Theatrical Sets & Props



Fabricated Accent Walls



Garage Doors



Recreational Gaming




Truck Bed Covers

APPLICATIONS & INDUSTRIES

Beyond their renowned use in architectural and signage systems, Laminators' high-performing customizable composite panels are attractive, durable, versatile components used within dozens of industries.

Whether you work in the auto racing industry, need to construct a high-end grow room, or specialize in aftermarket truck accessories, our panels offer a flexible, water- and weather-resistant design material with a long list of uses. Specific industries and applications include:

- Clean Rooms
- Grow Rooms
- Agricultural Centers
- Industrial Packaging
- Shipping/Storage Containers
- Equipment Enclosures
- Icehouse Shanties
- Art Surfaces
- Theatrical Sets & Props
- Partitions/Dividers/Barriers
- Displays & Exhibits
 - POP
 - Tradeshow
 - Kiosks
- Recreational Gaming
 - Pool Tables
 - Ping Pong Tables
- Garage Doors
- Marine/Boating
- Auto Aftermarket
 - Truck Bed Covers
 - Motorsports
 - Race Car Splitters
 - Recreational Vehicles (RVs)



Clean Rooms



Displays & Exhibits

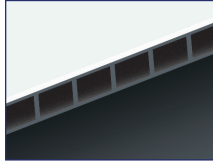
PANEL PRODUCTS

Laminators' array of cores (corrugated plastic, solid plastic, furniture-grade exterior plywood, insulated foam) as well as various thicknesses, sheet sizes, and double-/single-sided sheets give you the ability to satisfy any project requirements.

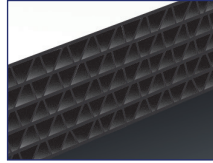
CORRUGATED PLASTIC CORE PANELS



Alupalite® Standard
Strong, durable panel with a high-density corrugated polypropylene core

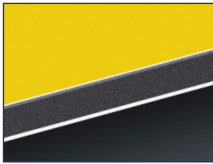


Alupalite® Economy
Redesigned Econolite!
Now an economical version of Alupalite Standard

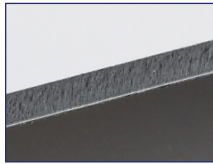


Alupalite® Ultra
Available in 15mm and 25mm thicknesses for maximum rigidity and flatness!

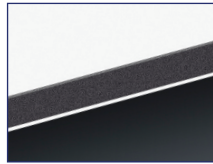
SOLID CORE PANELS



Omega-Bond® Standard
Same color and finish on both sides



Omega-Bond® Economy
One side gloss white, one side matte white



Omega-Bond® Premium
Designed specifically for fabrication applications

PLYWOOD CORE PANELS

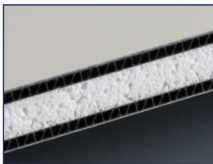


Omega SignBoard™
Exterior high-gloss vinyl over plywood core

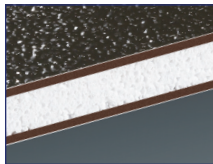


LusterBoard™
Painted aluminum bonded to one or both sides of plywood core

INSULATED/FOAM CORE PANELS



Thermolite™
High-tech look with energy-saving properties



Omega Foam-Ply®
Excellent solution for budget-conscious applications

LET US DO THE FABRICATION FOR YOU!

Save on time and labor costs by having Laminators fabricate your panel products. As manufacturers and fabricators, we understand the subtle nuances of fabricating for time- and cost-efficiency. In many cases you may not need to use the entirety of a panel. Let us fabricate your panels to the exact specifications of your project—we can cut, rout, bend, add fastener holes, and so much more!

Visit LaminatorsInc.com to learn more about our fabrication services.

FEATURES & BENEFITS

Laminators' customizable composite panels are made from aluminum or vinyl sheets bonded to high-grade cores. Panels are available in multiple colors—our Kynar or factory-baked polyester painted aluminum faces add high-gloss brilliance and rigidity, and are warranted not to crack, chip, flake, or peel.

With a multitude of colors and finishes, your design options are endless. Our standard colors are coil-coated for a consistent, long-lasting finish. We also offer custom colors to match your exact specifications.

- Standard panel thicknesses range from 2mm to 25mm (5/64" to 1"). Insulated panels range from 5/8" to 3-1/2".
- Sheet sizes range from 4' x 8' to 5' x 12'
- Finishes include smooth, stucco-embossed, mill, anodized, matte, and metallic
- Moisture-, corrosion-, and chemical-resistant
- Weather-resistant with a "Class A" flame spread rating*
- Field-tested through extensive freeze/thaw cycling tests with no significant structural panel failure
- Wind-resistant: can withstand winds over 120 mph
- Strong and lightweight
- Digital print-ready*
- Double-sided panels for modular/freestanding rooms
- Rout and cut easily using standard carpentry tools... or have Laminators fabricate your panels
- Can bend around corners; v-groove and bend for perfect 90° corners
- UL Recognized Component*
- Excellent alternative to aluminum honeycomb panels
- Interior and exterior applications

Note: Laminators products have been tested for architectural and signage uses only. Samples are available for testing purposes of your specific application.

Not all products are available in the thicknesses, sizes, or finishes listed above. All standard products can be customized and fabricated to your specifications. Please contact Laminators for product details.

Call 800-523-2347 today to see which Laminators panel product is best for your next application.

*Some exclusions may apply.



Race Car Splitters



3255 Penn Street, Hatfield, PA 19440-1731

800.523.2347

| [LaminatorsInc.com](https://www.LaminatorsInc.com)

©2022 Laminators Inc. All rights reserved. (05/22)