

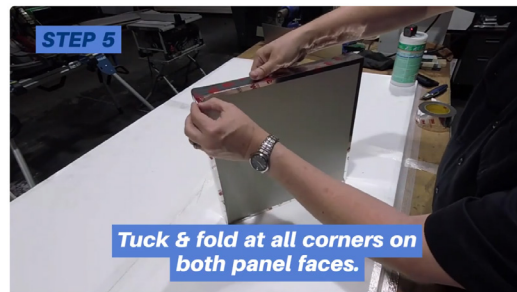
InfernoShield™ Non-Combustible Insulated Glazing Panel

Edge Treatment Method A: Foil Tape

Preparation for Continuous and Discontinuous Foil Tape:

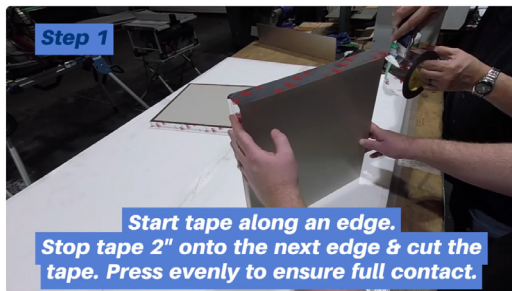
- Remove masking from both panel faces
- Use UL 181B foil tape, 3.1 mil (minimum)

Continuous Foil Tape



Discontinuous Foil Tape

Note: Repeat steps 1-3 for all panel edges



Questions?

Call 800.523.2347

Imperfections?

Apply an extra layer of tape over any cuts and tears in the tape.

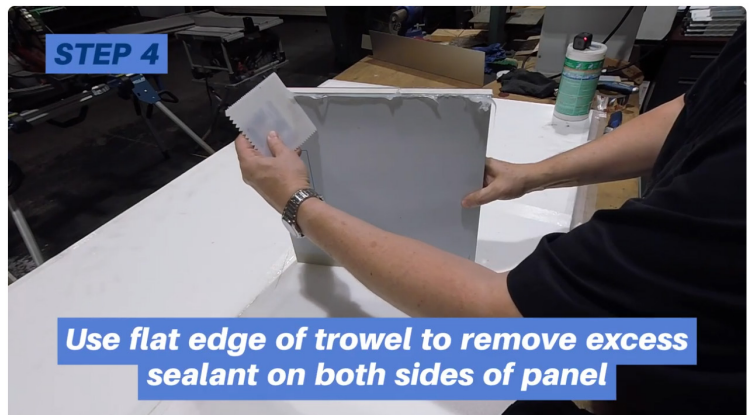
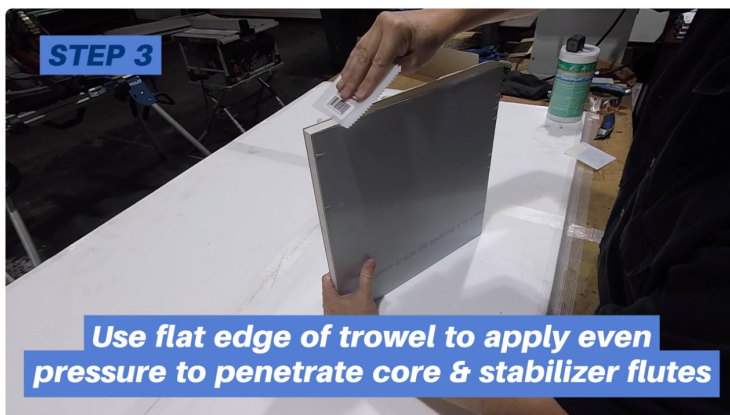


InfernoShield™ Non-Combustible Insulated Glazing Panel

Edge Treatment Method B: Silicone Sealant

Important:

- Do NOT remove the masking from the panel before applying edge treatment



IMPORTANT

Complete steps 1 through 4 on all four sides of the panel

DON'T FORGET!

Allow sealant to cure before removing masking & placing in the glazing pocket

Questions? Call 800.523.2347